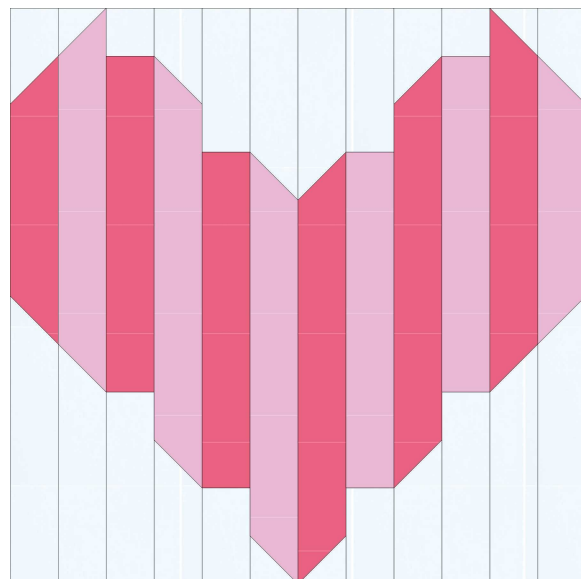
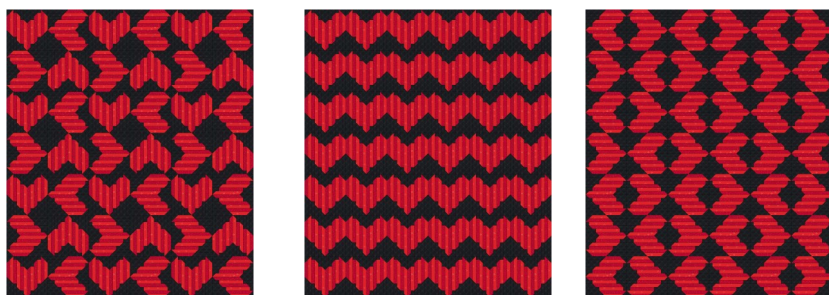


# Pieceful Heart

By Julie Luoma



This 12" block made up of 1 1/2" strips represents both the romance and sharp corners of love. As a stand alone, it makes a beautiful wall hanging or placemat. Combined, it makes some wickedly cool quilt designs!



## To make one 12" block:

Background—1/4 yard

Medium or light pink—1/8 yard

Dark pink—1/8 yard

Ruler with a 45° angle clearly marked

## To make 42 blocks to make a 72x84" quilt:

Background—3 5/8 yards

Medium or light—2 3/8 yards

Dark—2 3/8 yards

## Recommended:

Adjustable Quilt Strip Ruler (AQSR)

1 1/2" Strip Ruler by Off the Wall Quilt

Rotating Cutting Mat

Cut all fabric into 1 1/2" strips. Be careful to be accurate.

Subcut strips into lengths indicated

Do NOT round up, cut at 7/8" where indicated AFTER cutting to the length indicated, but at a 45° as indicated paying close attention to the direction of the angle

1 1/2"

