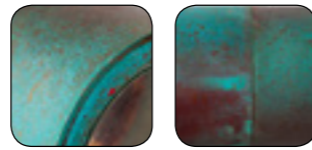
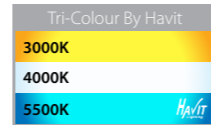


Taper Copper

- Wall wedge
- Copper body
- Frosted tempered glass
- Fast weathering for classic aged appearance
- IP Rating: IP44

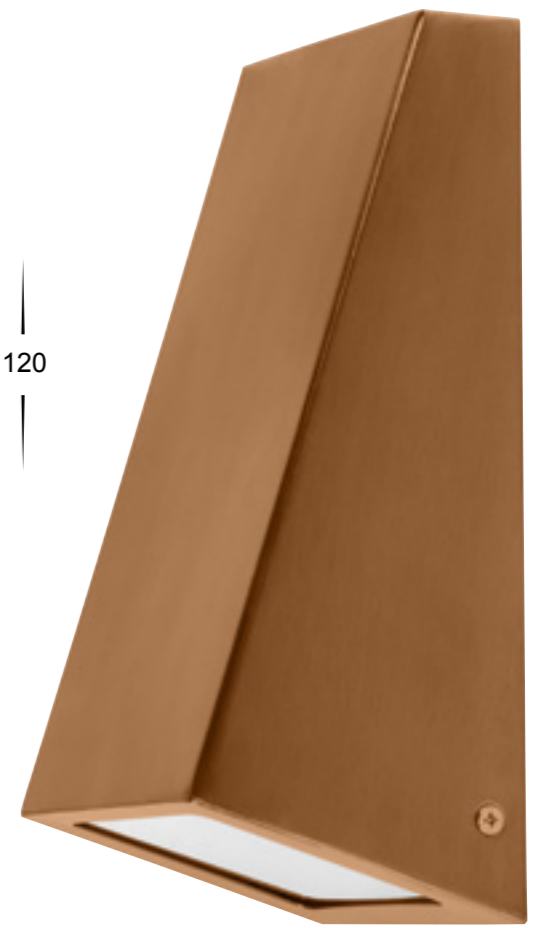
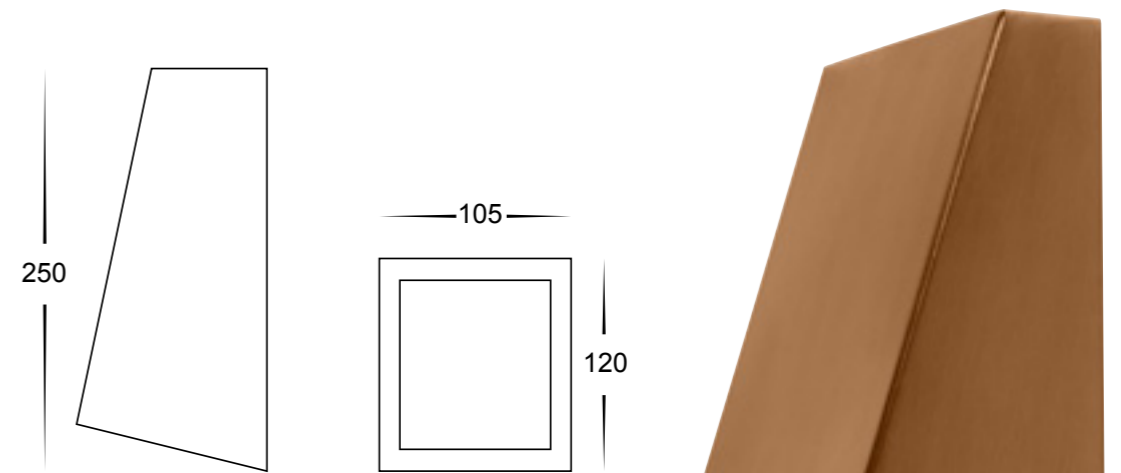


Weathered Copper



Compatible with Tri-Colour 9in1 3w, 5w, 7w 12v,24v or 240v LED Globe

IMAGE	PART NUMBER	COLOUR TEMP	LUMENS	INPUT	INCLUDED LED
	HV3601T-CP	3000K 4000K 5500K	700lm 720lm 740lm	240v	Tri-Colour 9w E27 LED
	HV3602T-CP	3000K 4000K 5500K	270lm 285lm 300lm	240v	Tri-Colour 5w GU10 LED
	HV3605T-CP	3000K 4000K 5500K	270lm 285lm 300lm	12v DC	Tri-Colour 5w MR16 LED
	HV3608C-CP	5500K	110lm	12v DC	1.5w SMD G4 Bi pin
	HV3608W-CP	3000k	90lm		



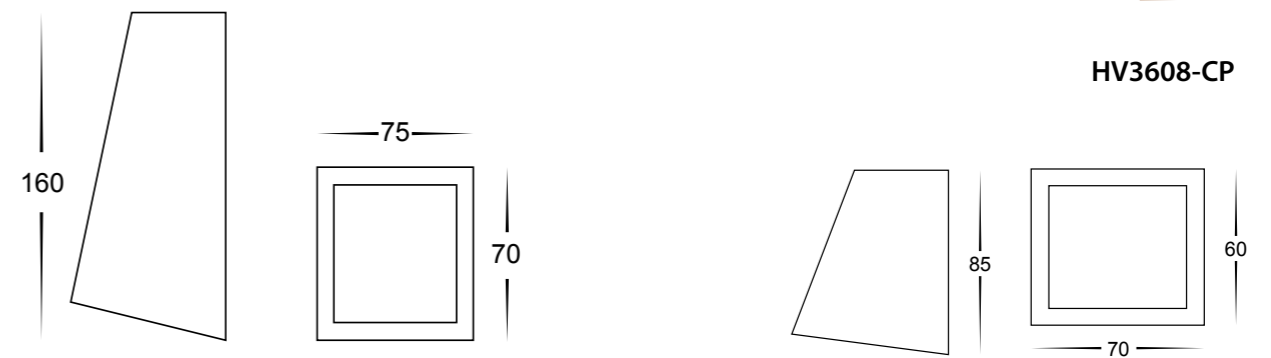
HV3601-CP



HV3602-CP/HV3605-CP



HV3608-CP



All low voltage products that specify an input of 12v or 24v DC must be used with a suitable LED driver, refer to pages 267 - 274. Lumen output measured at source. All globes supplied with fittings are non dimmable. If you require 240v dimmable globes refer to page 336

All low voltage products that specify an input of 12v or 24v DC must be used with a suitable LED driver, refer to pages 267 - 274. Lumen output measured at source. All globes supplied with fittings are non dimmable. If you require 240v dimmable globes refer to page 336