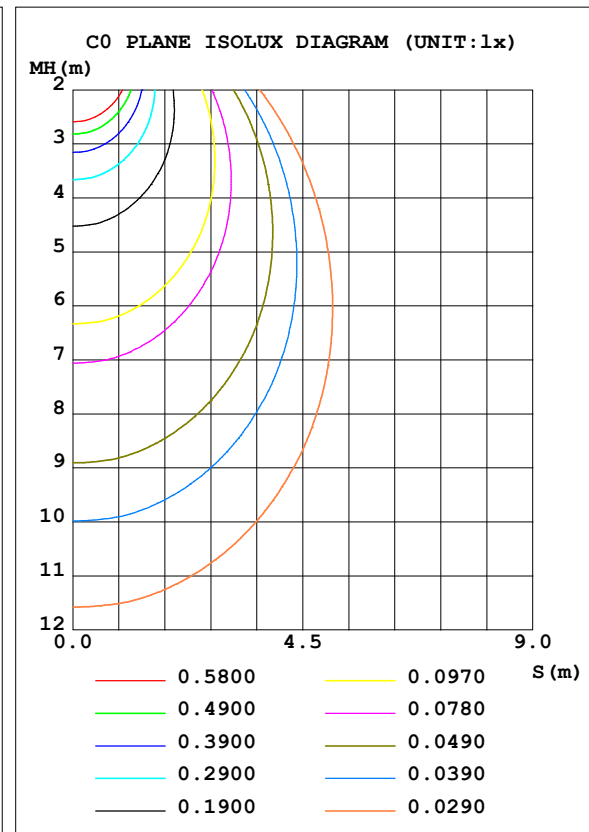
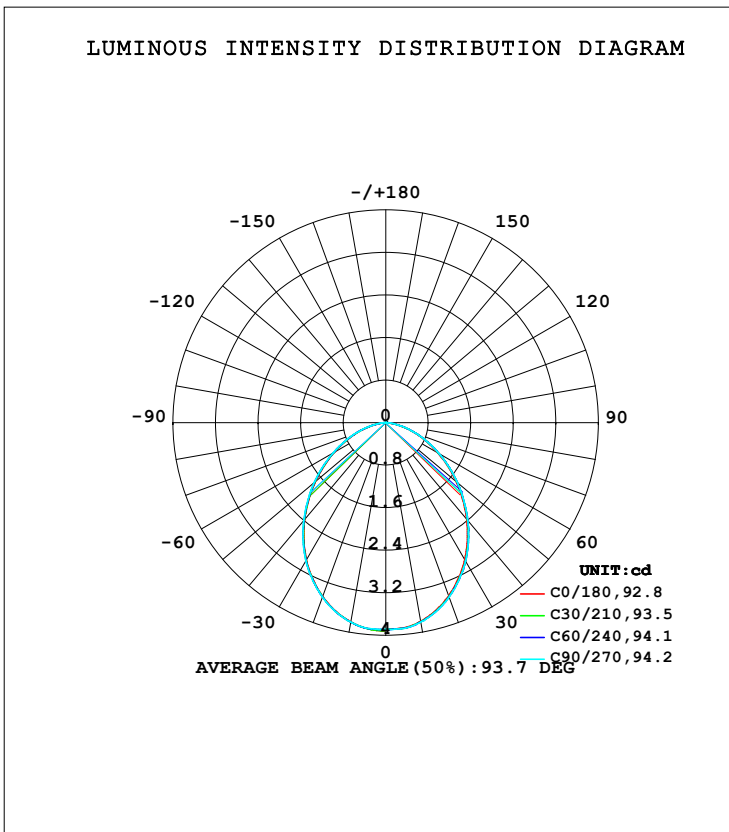


LUMINAIRE PHOTOMETRIC TEST REPORT

Test:U:11.998V I:0.0413A P:0.4955W PF:1.0000 Freq:0Hz Lamp Flux:8.74884x1 lm		
NAME: HV28261W	TYPE:	WEIGHT:
SPEC.:	DIM.:	SERIAL No.:
MFR.: Havit Lighting	SUR.:	Shielding Angle:

DATA OF LAMP		PHOTOMETRIC DATA			
MODEL	HV28261W	Imax (cd)	3.920	S/MH (C0/180)	1.15
NOMINAL POWER (W)	0.5	LOR (%)	100.0	S/MH (C90/270)	1.16
RATED VOLTAGE (V)	12	TOTAL FLUX (lm)	8.7488	η UP, DN (C0-180)	0.0, 50.0
NOMINAL FLUX (lm)	8.74884	CIE CLASS	DIRECT	η UP, DN (C180-360)	0.0, 50.0
LAMPS INSIDE	1	η up (%)	0.0	CIBSE SHR NOM	1.25
TEST VOLTAGE (V)	12	η down (%)	100.0	CIBSE SHR MAX	1.30



C Range: 0 - 180DEG
 C Interval: 15.0DEG
 Test Speed: HIGH
 Temperature: 25.3DEG
 Operators: DAMIN
 Test Date: 2019-06-24

γ Range: 0 - 180DEG
 γ Interval: 0.5DEG
 Test System: GO-2000B_V1 SYSTEM V2.0.366
 Humidity: 65.0%
 Test Distance: 6.345m [K=1.0000]
 Remarks:

ZONAL FLUX DIAGRAM

ZONAL FLUX DIAGRAM:

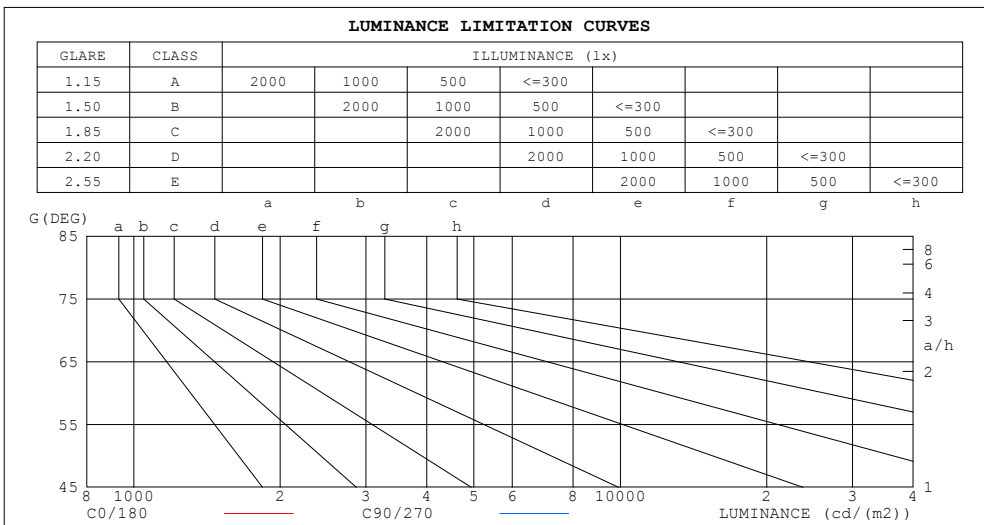
γ	C0	C45	C90	C135	C180	C225	C270	C315	γ	Φ zone	Φ total	%lum, lamp
10	3.791	3.781	3.810	3.788	3.805	3.788	3.810	3.781	0- 10	0.3674	0.3674	4.2,4.2
20	3.465	3.465	3.489	3.467	3.477	3.467	3.489	3.465	10- 20	1.030	1.397	16,16
30	2.972	2.985	3.005	2.981	2.986	2.981	3.005	2.985	20- 30	1.494	2.892	33.1,33.1
40	2.368	2.386	2.399	2.372	2.375	2.372	2.399	2.386	30- 40	1.684	4.576	52.3,52.3
50	1.731	1.741	1.759	1.732	1.731	1.732	1.759	1.741	40- 50	1.591	6.166	70.5,70.5
60	1.124	1.133	1.148	1.125	1.117	1.125	1.148	1.133	50- 60	1.280	7.447	85.1,85.1
70	0.6070	0.6040	0.6237	0.5922	0.5953	0.5922	0.6237	0.6040	60- 70	0.8522	8.299	94.9,94.9
80	0.1727	0.1743	0.1869	0.1601	0.1632	0.1601	0.1869	0.1743	70- 80	0.4021	8.701	99.5,99.5
90	0	0	0	0	0	0	0	0	80- 90	0.0479	8.749	100,100
100	0	0	0	0	0	0	0	0	90-100	0	8.749	100,100
110	0	0	0	0	0	0	0	0	100-110	0	8.749	100,100
120	0	0	0	0	0	0	0	0	110-120	0	8.749	100,100
130	0	0	0	0	0	0	0	0	120-130	0	8.749	100,100
140	0	0	0	0	0	0	0	0	130-140	0	8.749	100,100
150	0	0	0	0	0	0	0	0	140-150	0	8.749	100,100
160	0	0	0	0	0	0	0	0	150-160	0	8.749	100,100
170	0	0	0	0	0	0	0	0	160-170	0	8.749	100,100
180	0	0	0	0	0	0	0	0	170-180	0	8.749	100,100
DEG	LUMINOUS INTENSITY:cd									UNIT:lm		

C Range: 0 - 180DEG
 C Interval: 15.0DEG
 Test Speed: HIGH
 Temperature:25.3DEG
 Operators:DAMIN
 Test Date:2019-06-24

γ Range: 0 - 180DEG
 γ Interval: 0.5DEG
 γ Test System:EVERFINE GO-2000B_V1 SYSTEM V2.0.366
 Humidity:65.0%
 Test Distance:6.345m [K=1.0000]
 Remarks:

LUMINANCE LIMITATION CURVES

Test:U:11.998V I:0.0413A P:0.4955W PF:1.0000 Freq:0Hz Lamp Flux:8.74884x1 lm		
NAME: HV28261W	TYPE:	WEIGHT:
SPEC.:	DIM.:	SERIAL No.:
MFR.: Havit Lighting	SUR.:	Shielding Angle:



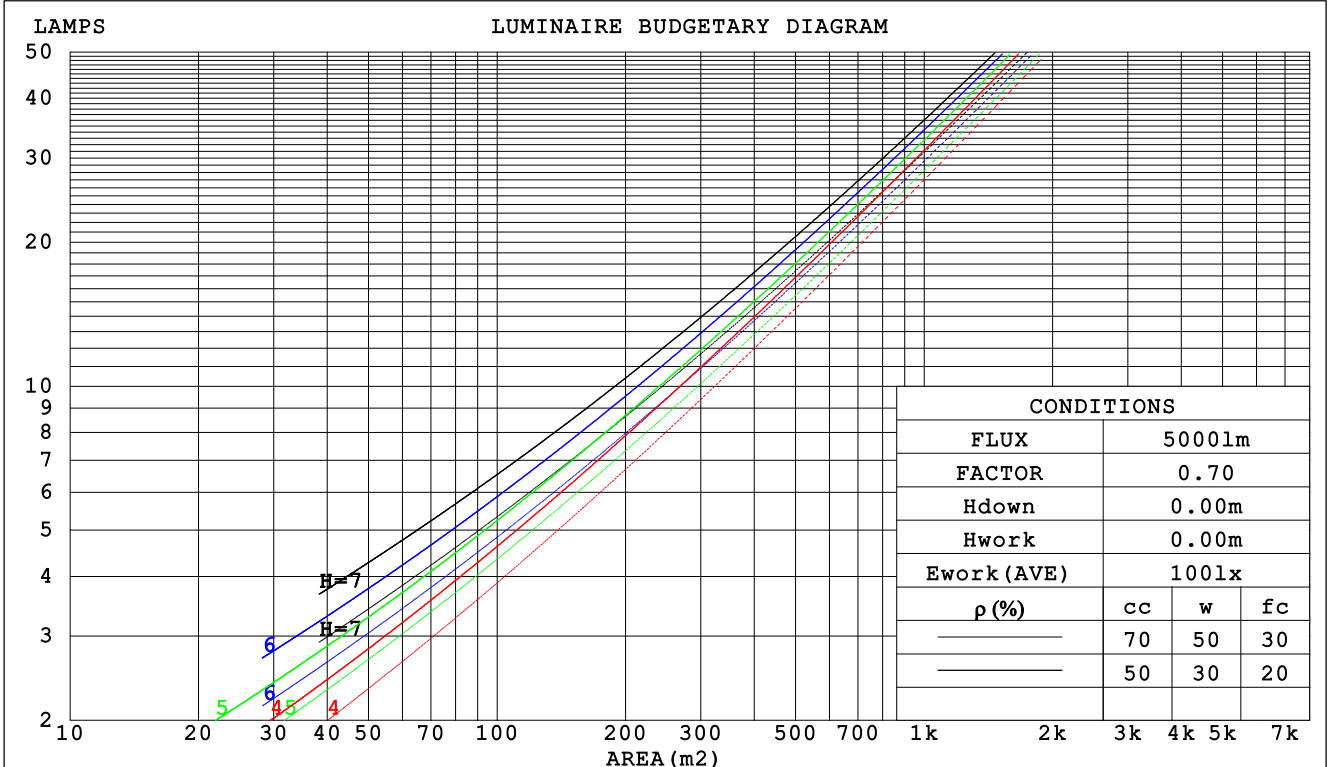
C Range: 0 - 180DEG
 C Interval: 15.0DEG
 Test Speed: HIGH
 Temperature: 25.3DEG
 Operators: DAMIN
 Test Date: 2019-06-24

γ Range: 0 - 180DEG
 γ Interval: 0.5DEG
 Test System: EVERFINE GO-2000B_V1 SYSTEM V2.0.366
 Humidity: 65.0%
 Test Distance: 6.345m [K=1.0000]
 Remarks:

CU AND LUMINAIRE BUDGETARY ESTIMATE DIAGRAM

Test:U:11.998V I:0.0413A P:0.4955W PF:1.0000 Freq:0Hz Lamp Flux:8.74884x1 lm		
NAME: HV28261W	TYPE:	WEIGHT:
SPEC.:	DIM.:	SERIAL No.:
MFR.: Havit Lighting	SUR.:	Shielding Angle:

ρcc	80%			70%			50%			30%			10%			0
	50%	30%	10%	50%	30%	10%	50%	30%	10%	50%	30%	10%	50%	30%	10%	0
ρw																0
ρfc	20%			20%			20%			20%			20%			0
RCR	RCR:Room Cavity Ratio						Coefficients of Utilization(CU)									
0.0	1.19	1.19	1.19	1.16	1.16	1.16	1.11	1.11	1.11	1.06	1.06	1.06	1.02	1.02	1.02	1.00
1.0	1.06	1.02	.99	1.04	1.00	.97	.99	.97	.94	.96	.93	.91	.92	.90	.88	.86
2.0	.93	.87	.82	.92	.86	.81	.88	.83	.79	.85	.81	.77	.82	.79	.76	.74
3.0	.83	.75	.69	.81	.74	.69	.78	.73	.68	.76	.71	.66	.73	.69	.65	.63
4.0	.74	.66	.60	.73	.65	.59	.70	.64	.58	.68	.62	.58	.66	.61	.57	.55
5.0	.67	.58	.52	.66	.58	.52	.64	.57	.51	.62	.55	.51	.60	.54	.50	.48
6.0	.60	.52	.46	.59	.51	.46	.58	.51	.45	.56	.50	.45	.55	.49	.44	.43
7.0	.55	.47	.41	.54	.46	.41	.53	.46	.40	.51	.45	.40	.50	.44	.40	.38
8.0	.50	.42	.37	.50	.42	.37	.48	.41	.36	.47	.41	.36	.46	.40	.36	.34
9.0	.46	.39	.33	.46	.38	.33	.45	.38	.33	.44	.37	.33	.43	.37	.33	.31
10.0	.43	.35	.30	.42	.35	.30	.42	.35	.30	.41	.34	.30	.40	.34	.30	.28



C Range: 0 - 180DEG
 C Interval: 15.0DEG
 Test Speed: HIGH
 Temperature:25.3DEG
 Operators:DAMIN
 Test Date:2019-06-24

γ Range: 0 - 180DEG
 γ Interval: 0.5DEG
 Test System:EVERFINE GO-2000B_V1 SYSTEM V2.0.366
 Humidity:65.0%
 Test Distance:6.345m [K=1.0000]
 Remarks:

WEC AND CCEC

Test:U:11.998V I:0.0413A P:0.4955W PF:1.0000 Freq:0Hz Lamp Flux:8.74884x1 lm		
NAME: HV28261W	TYPE:	WEIGHT:
SPEC.:	DIM.:	SERIAL No.:
MFR.: Havit Lighting	SUR.:	Shielding Angle:

ρcc	80%			70%			50%			30%			10%			0
ρw	50%	30%	10%	50%	30%	10%	50%	30%	10%	50%	30%	10%	50%	30%	10%	0
ρfc	20%			20%			20%			20%			20%			0
RCR	RCR:Room Cavity Ratio						Wall Exitance Coefficients (WEC)									
0.0																
1.0	.273	.155	.049	.266	.151	.048	.252	.145	.046	.240	.139	.045	.229	.133	.043	
2.0	.263	.144	.044	.257	.141	.044	.245	.136	.042	.235	.132	.041	.225	.127	.040	
3.0	.247	.132	.039	.242	.129	.039	.232	.126	.038	.222	.122	.037	.214	.118	.037	
4.0	.231	.120	.035	.226	.118	.035	.217	.115	.034	.209	.112	.034	.201	.109	.033	
5.0	.215	.110	.032	.211	.108	.032	.203	.106	.031	.196	.103	.031	.189	.101	.030	
6.0	.201	.101	.029	.197	.100	.029	.190	.098	.028	.184	.095	.028	.178	.093	.028	
7.0	.188	.093	.026	.185	.092	.026	.179	.090	.026	.173	.089	.026	.167	.087	.026	
8.0	.177	.086	.024	.174	.086	.024	.168	.084	.024	.163	.082	.024	.158	.081	.024	
9.0	.166	.080	.022	.164	.080	.022	.159	.078	.022	.154	.077	.022	.149	.076	.022	
10.0	.157	.075	.021	.154	.075	.021	.150	.073	.021	.146	.072	.021	.142	.071	.020	

ρcc	80%			70%			50%			30%			10%			0
ρw	50%	30%	10%	50%	30%	10%	50%	30%	10%	50%	30%	10%	50%	30%	10%	0
ρfc	20%			20%			20%			20%			20%			0
RCR	RCR:Room Cavity Ratio						Ceiling Cavity Exitance Coefficients (CCEC)									
0.0	.190	.190	.190	.163	.163	.163	.111	.111	.111	.064	.064	.064	.020	.020	.020	
1.0	.178	.156	.137	.152	.134	.118	.104	.092	.082	.060	.053	.048	.019	.017	.015	
2.0	.168	.132	.101	.144	.114	.088	.099	.079	.061	.057	.046	.036	.018	.015	.012	
3.0	.160	.114	.078	.137	.098	.067	.094	.068	.047	.054	.040	.028	.017	.013	.009	
4.0	.152	.101	.061	.131	.087	.053	.090	.061	.037	.052	.035	.022	.017	.012	.007	
5.0	.145	.090	.049	.124	.078	.043	.086	.054	.030	.050	.032	.018	.016	.010	.006	
6.0	.138	.081	.041	.119	.071	.036	.082	.049	.025	.047	.029	.015	.015	.009	.005	
7.0	.131	.075	.035	.113	.065	.030	.078	.045	.021	.045	.027	.013	.015	.009	.004	
8.0	.125	.069	.030	.108	.060	.026	.075	.042	.018	.043	.025	.011	.014	.008	.004	
9.0	.119	.064	.026	.103	.055	.023	.071	.039	.016	.042	.023	.010	.013	.008	.003	
10.0	.114	.059	.023	.098	.052	.020	.068	.036	.014	.040	.021	.009	.013	.007	.003	

C Range: 0 - 180DEG
 C Interval: 15.0DEG
 Test Speed: HIGH
 Temperature:25.3DEG
 Operators:DAMIN
 Test Date:2019-06-24

γ Range: 0 - 180DEG
 γ Interval: 0.5DEG
 Test System:EVERFINE GO-2000B_V1 SYSTEM V2.0.366
 Humidity:65.0%
 Test Distance:6.345m [K=1.0000]
 Remarks:

UGR(Unified Glare Rating) Table

Test:U:11.998V I:0.0413A P:0.4955W PF:1.0000 Freq:0Hz Lamp Flux:8.74884x1 lm										
NAME: HV28261W					TYPE:			WEIGHT:		
SPEC.:					DIM.:			SERIAL No.:		
MFR.: Havit Lighting					SUR.:			Shielding Angle:		
ceiling/cavity	0.7	0.7	0.5	0.5	0.3	0.7	0.7	0.5	0.5	0.3
walls	0.5	0.3	0.5	0.3	0.3	0.5	0.3	0.5	0.3	0.3
working plane	0.2	0.2	0.2	0.2	0.2	0.2	0.2	0.2	0.2	0.2
Room dimensions	Viewed crosswise					Viewed endwise				
x = 2H y = 2H	16.2	17.6	16.5	17.8	18.0	16.3	17.7	16.5	17.9	18.1
3H	17.2	18.6	17.5	18.8	19.0	17.3	18.6	17.6	18.9	19.1
4H	17.6	18.8	17.9	19.1	19.3	17.7	18.9	18.0	19.2	19.4
6H	17.7	18.9	18.1	19.2	19.4	17.8	19.0	18.2	19.3	19.6
8H	17.7	18.9	18.1	19.1	19.4	17.9	19.0	18.2	19.3	19.5
12H	17.7	18.8	18.0	19.1	19.4	17.8	18.9	18.2	19.2	19.5
4H 2H	16.7	17.9	17.0	18.1	18.4	16.7	17.9	17.0	18.2	18.4
3H	17.9	19.0	18.2	19.3	19.6	18.0	19.0	18.3	19.3	19.6
4H	18.3	19.3	18.7	19.6	20.0	18.4	19.4	18.8	19.7	20.0
6H	18.6	19.4	18.9	19.8	20.1	18.7	19.5	19.1	19.9	20.2
8H	18.6	19.4	19.0	19.7	20.1	18.7	19.5	19.1	19.9	20.2
12H	18.5	19.3	19.0	19.7	20.1	18.7	19.4	19.1	19.8	20.2
8H 4H	18.5	19.3	18.9	19.6	20.0	18.5	19.4	19.0	19.7	20.1
6H	18.8	19.4	19.2	19.8	20.3	18.9	19.5	19.3	19.9	20.4
8H	18.8	19.4	19.3	19.8	20.3	18.9	19.5	19.4	19.9	20.4
12H	18.8	19.3	19.3	19.8	20.2	18.9	19.4	19.4	19.9	20.3
12H 4H	18.5	19.2	18.9	19.6	20.0	18.5	19.3	19.0	19.6	20.0
6H	18.8	19.4	19.2	19.8	20.2	18.9	19.5	19.3	19.9	20.3
8H	18.8	19.3	19.3	19.8	20.3	18.9	19.4	19.4	19.9	20.4
Variations with the observer position at spacings:										
S = 1.0H	+ 0.3 / - 0.4					+ 0.3 / - 0.3				
1.5H	+ 0.1 / - 0.3					+ 0.1 / - 0.3				
2.0H	+ 0.4 / - 0.4					+ 0.5 / - 0.4				

CIE Pub.117, 8.749 lm Total Lamp Luminous Flux Correct (8log(F/F0) = -16.5)

C Range: 0 - 180DEG
C Interval: 15.0DEG
Test Speed: HIGH
Temperature:25.3DEG
Operators:DAMIN
Test Date:2019-06-24

γ Range: 0 - 180DEG
γ Interval: 0.5DEG
Test System:EVERFINE GO-2000B_V1 SYSTEM V2.0.366
Humidity:65.0%
Test Distance:6.345m [K=1.0000]
Remarks:

UTILIZATION FACTORS TABLE

Test:U:11.998V I:0.0413A P:0.4955W PF:1.0000 Freq:0Hz Lamp Flux:8.74884x1 lm		
NAME: HV28261W	TYPE:	WEIGHT:
SPEC.:	DIM.:	SERIAL No.:
MFR.: Havit Lighting	SUR.:	Shielding Angle:

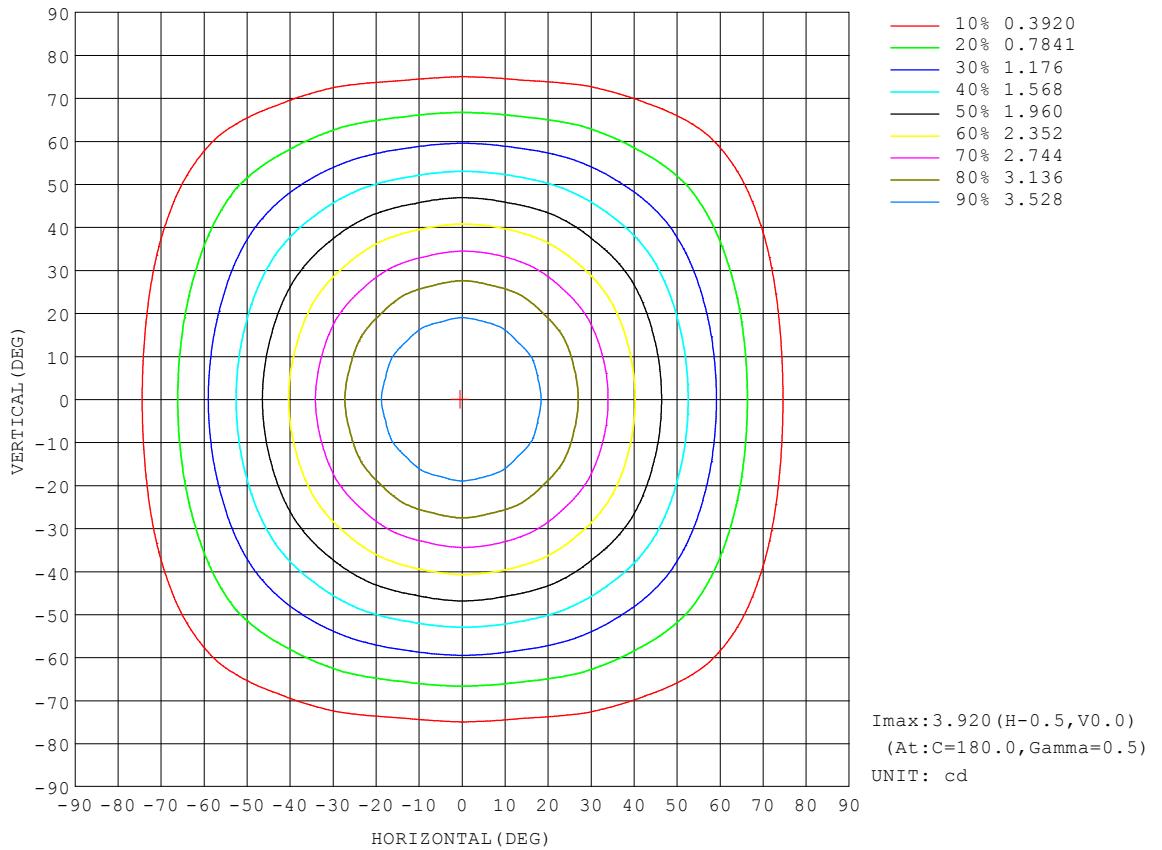
REFLECTANCE										
Ceiling	0.8	0.8	0.8	0.7	0.7	0.7	0.5	0.5	0.5	0
Walls	0.7	0.5	0.3	0.7	0.5	0.3	0.7	0.5	0.3	0
Working plane	0.2	0.2	0.2	0.2	0.2	0.2	0.2	0.2	0.2	0
ROOM INDEX	UTILIZATION FACTORS (PERCENT) $k(RI) \times RCR = 5$									
k = 0.60	62	51	44	61	51	44	60	50	44	38
0.80	72	61	54	71	61	54	69	60	54	47
1.00	80	70	63	79	69	63	77	71	63	56
1.25	87	78	71	86	77	71	83	75	70	63
1.50	92	83	77	90	82	76	87	80	75	68
2.00	98	90	85	96	89	84	93	87	82	75
2.50	101	95	89	100	93	88	96	91	86	79
3.00	104	98	94	102	97	93	99	94	90	82
4.00	108	103	99	106	101	98	102	98	95	87
5.00	110	106	102	108	104	101	103	100	98	89
ROOM INDEX	UF(total)									Direct
According to DIN EN 13032-2 2004			Suspended				SHRNOM = 1.25			

C Range: 0 - 180DEG
 C Interval: 15.0DEG
 Test Speed: HIGH
 Temperature:25.3DEG
 Operators:DAMIN
 Test Date:2019-06-24

γ Range: 0 - 180DEG
 γ Interval: 0.5DEG
 Test System:EVERFINE GO-2000B_V1 SYSTEM V2.0.366
 Humidity:65.0%
 Test Distance:6.345m [K=1.0000]
 Remarks:

ISOCANDELA DIAGRAM

Test:U:11.998V I:0.0413A P:0.4955W PF:1.0000 Freq:0Hz Lamp Flux:8.74884x1 lm		
NAME: HV28261W	TYPE:	WEIGHT:
SPEC.:	DIM.:	SERIAL No.:
MFR.: Havit Lighting	SUR.:	Shielding Angle:

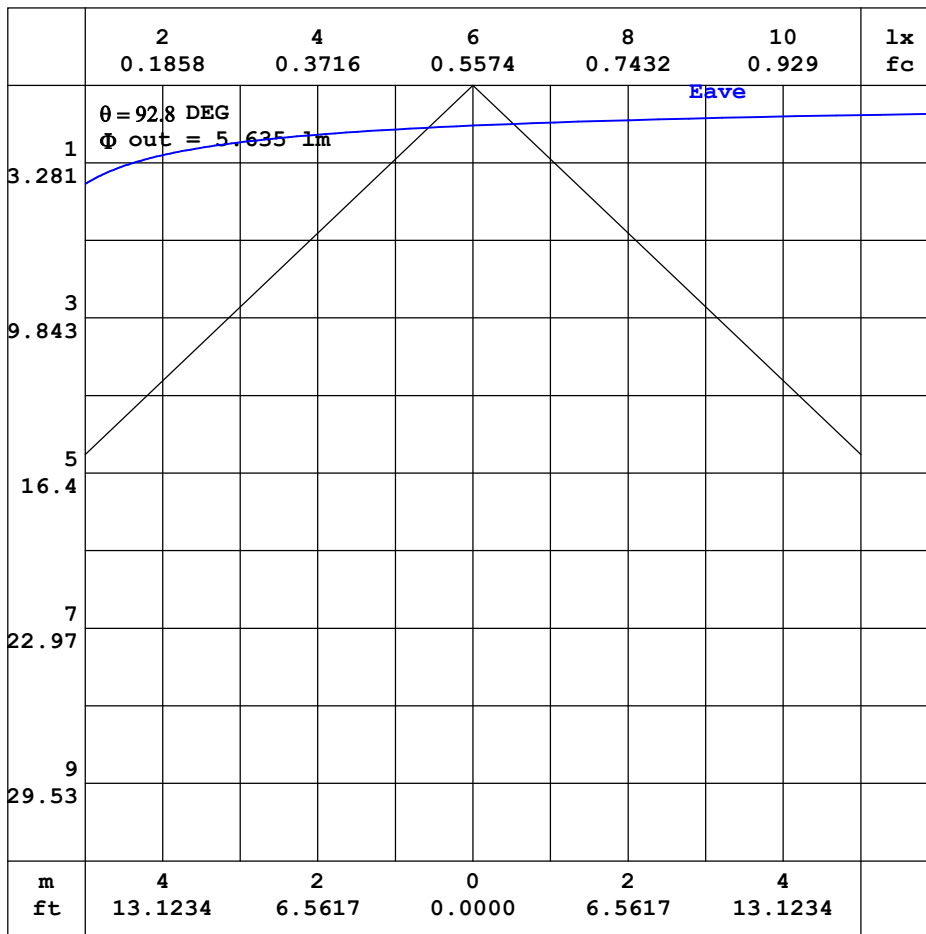


C Range: 0 - 180DEG
 C Interval: 15.0DEG
 Test Speed: HIGH
 Temperature:25.3DEG
 Operators:DAMIN
 Test Date:2019-06-24

γ Range: 0 - 180DEG
 γ Interval: 0.5DEG
 Test System:EVERFINE GO-2000B_V1 SYSTEM V2.0.366
 Humidity:65.0%
 Test Distance:6.345m [K=1.0000]
 Remarks:

AAI CURVES

Test:U:11.998V I:0.0413A P:0.4955W PF:1.0000 Freq:0Hz Lamp Flux:8.74884x1 lm		
NAME: HV28261W	TYPE:	WEIGHT:
SPEC.:	DIM.:	SERIAL No.:
MFR.: Havit Lighting	SUR.:	Shielding Angle:



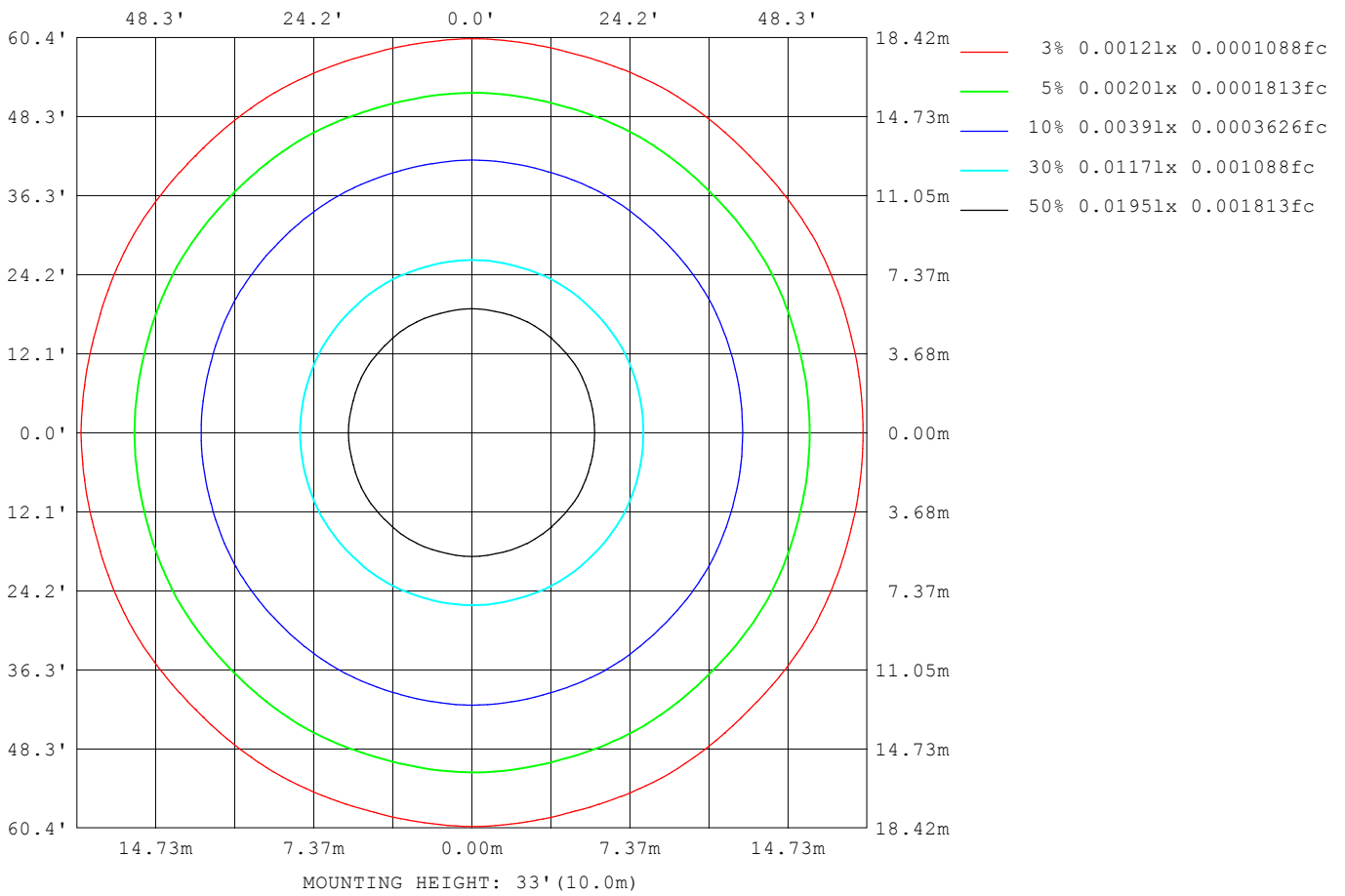
Note:The Curves indicate the illuminated area and the average illumination when the luminaire is at different distance.

C Range: 0 - 180DEG
 C Interval: 15.0DEG
 Test Speed: HIGH
 Temperature:25.3DEG
 Operators:DAMIN
 Test Date:2019-06-24

γ Range: 0 - 180DEG
 γ Interval: 0.5DEG
 Test System:EVERFINE GO-2000B_V1 SYSTEM V2.0.366
 Humidity:65.0%
 Test Distance:6.345m [K=1.0000]
 Remarks:

ISOLUX DIAGRAM

Test:U:11.998V I:0.0413A P:0.4955W PF:1.0000 Freq:0Hz Lamp Flux:8.74884x1 lm		
NAME: HV28261W	TYPE:	WEIGHT:
SPEC.:	DIM.:	SERIAL No.:
MFR.: Havit Lighting	SUR.:	Shielding Angle:



C Range: 0 - 180DEG
 C Interval: 15.0DEG
 Test Speed: HIGH
 Temperature:25.3DEG
 Operators:DAMIN
 Test Date:2019-06-24

γ Range: 0 - 180DEG
 γ Interval: 0.5DEG
 Test System:EVERFINE GO-2000B_V1 SYSTEM V2.0.366
 Humidity:65.0%
 Test Distance:6.345m [K=1.0000]
 Remarks:

LED Avg.L Report

Test:U:11.998V I:0.0413A P:0.4955W PF:1.0000 Freq:0Hz Lamp Flux:8.74884x1 lm		
NAME: HV28261W	TYPE:	WEIGHT:
SPEC.:	DIM.:	SERIAL No.:
MFR.: Havit Lighting	SUR.:	Shielding Angle:

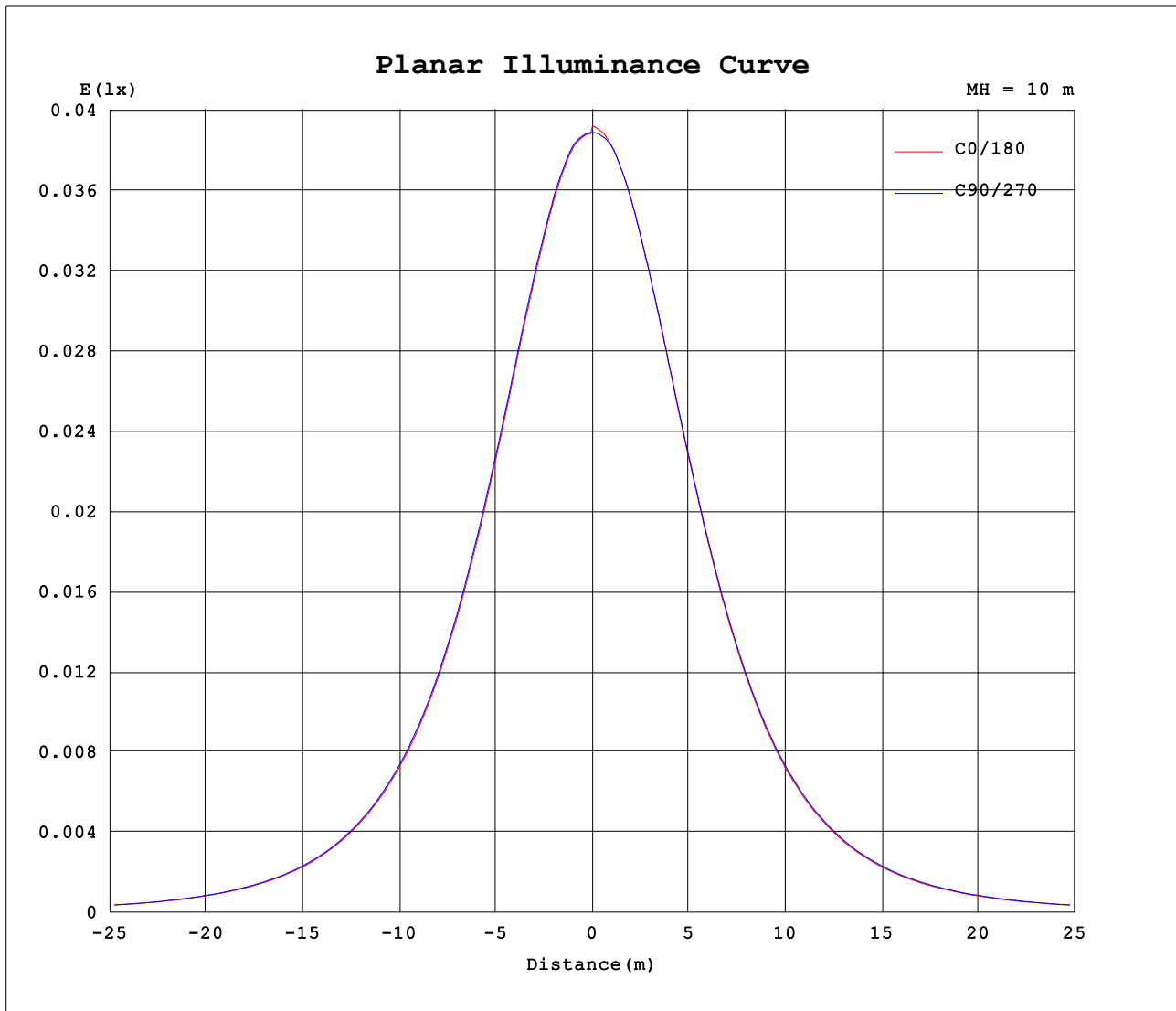
AvgL	cd/m2
L_0~180 (65) av	20
L_0~180 (75) av	14
L_0~180 (85) av	1
L_90~270 (65) av	21
L_90~270 (75) av	15
L_90~270 (85) av	3
L_45 (65) av	20
L_45 (75) av	14
L_45 (85) av	0

Standard: GB/T 29293-2012

C Range: 0 - 180DEG
 C Interval: 15.0DEG
 Test Speed: HIGH
 Temperature:25.3DEG
 Operators:DAMIN
 Test Date:2019-06-24

γ Range: 0 - 180DEG
 γ Interval: 0.5DEG
 Test System:EVERFINE GO-2000B_V1 SYSTEM V2.0.366
 Humidity:65.0%
 Test Distance:6.345m [K=1.0000]
 Remarks:

Planar Illuminance Curve



C Range: 0 - 180DEG
C Interval: 15.0DEG
Test Speed: HIGH
Temperature: 25.3DEG
Operators: DAMIN
Test Date: 2019-06-24

γ Range: 0 - 180DEG
 γ Interval: 0.5DEG
Test System: EVERFINE GO-2000B_V1 SYSTEM V2.0.366
Humidity: 65.0%
Test Distance: 6.345m [K=1.0000]
Remarks:



LUMINOUS DISTRIBUTION INTENSITY DATA

Test:U:11.998V I:0.0413A P:0.4955W PF:1.0000 Freq:0Hz Lamp Flux:8.74884x1 lm		
NAME: HV28261W	TYPE:	WEIGHT:
SPEC.:	DIM.:	SERIAL No.:
MFR.: Havit Lighting	SUR.:	Shielding Angle:

Table--1

UNIT: cd

C (DEG) γ (DEG)	0	15	30	45	60	75	90	105	120	135	150	165	180	195	210	225	240	255	270
0	3.89	3.89	3.89	3.89	3.89	3.89	3.89	3.89	3.89	3.91	3.91	3.92	3.92	3.92	3.91	3.91	3.89	3.89	3.89
5	3.87	3.86	3.88	3.87	3.88	3.88	3.88	3.88	3.89	3.87	3.89	3.88	3.89	3.88	3.89	3.87	3.89	3.88	3.88
10	3.79	3.77	3.80	3.78	3.81	3.79	3.81	3.79	3.81	3.79	3.81	3.78	3.81	3.78	3.81	3.79	3.81	3.79	3.81
15	3.65	3.65	3.67	3.65	3.67	3.65	3.68	3.65	3.67	3.65	3.67	3.65	3.67	3.65	3.67	3.65	3.67	3.65	3.68
20	3.47	3.46	3.48	3.46	3.49	3.47	3.49	3.47	3.48	3.47	3.48	3.46	3.48	3.46	3.48	3.47	3.48	3.47	3.49
25	3.23	3.23	3.25	3.24	3.26	3.24	3.26	3.24	3.26	3.24	3.25	3.23	3.25	3.23	3.25	3.24	3.26	3.24	3.26
30	2.97	2.97	3.00	2.99	3.00	3.00	3.01	2.99	3.00	2.98	2.99	2.97	2.99	2.97	2.99	2.98	3.00	2.99	3.01
35	2.68	2.68	2.70	2.70	2.71	2.70	2.71	2.70	2.71	2.69	2.70	2.68	2.69	2.68	2.70	2.69	2.71	2.70	2.71
40	2.37	2.37	2.39	2.39	2.40	2.40	2.40	2.39	2.39	2.37	2.38	2.37	2.38	2.37	2.38	2.37	2.39	2.39	2.40
45	2.05	2.06	2.07	2.06	2.08	2.06	2.08	2.06	2.07	2.05	2.06	2.04	2.05	2.04	2.06	2.05	2.07	2.06	2.08
50	1.73	1.73	1.76	1.74	1.76	1.75	1.76	1.74	1.75	1.73	1.74	1.72	1.73	1.72	1.74	1.73	1.75	1.74	1.76
55	1.42	1.42	1.45	1.43	1.45	1.43	1.45	1.43	1.44	1.42	1.43	1.41	1.42	1.41	1.43	1.42	1.44	1.43	1.45
60	1.12	1.12	1.15	1.13	1.15	1.14	1.15	1.13	1.14	1.13	1.13	1.12	1.12	1.12	1.13	1.13	1.14	1.13	1.15
65	0.85	0.85	0.87	0.86	0.88	0.86	0.87	0.85	0.87	0.85	0.86	0.83	0.84	0.83	0.86	0.85	0.87	0.85	0.87
70	0.61	0.60	0.62	0.60	0.63	0.61	0.62	0.60	0.61	0.59	0.61	0.59	0.60	0.59	0.61	0.59	0.61	0.60	0.62
75	0.38	0.37	0.39	0.37	0.39	0.38	0.39	0.37	0.39	0.36	0.38	0.36	0.36	0.36	0.38	0.36	0.39	0.37	0.39
80	0.17	0.17	0.19	0.17	0.19	0.17	0.19	0.17	0.18	0.16	0.17	0.15	0.16	0.15	0.17	0.16	0.18	0.17	0.19
85	0.01	0.00	0.02	0.00	0.03	0.01	0.02	0.00	0.02	0.00	0.01	0.00	0.00	0.00	0.01	0.00	0.02	0.00	0.02
90	0.00	0.00	0.00	0.00	0.00	0.00	0.00	0.00	0.00	0.00	0.00	0.00	0.00	0.00	0.00	0.00	0.00	0.00	0.00
95	0.00	0.00	0.00	0.00	0.00	0.00	0.00	0.00	0.00	0.00	0.00	0.00	0.00	0.00	0.00	0.00	0.00	0.00	0.00
100	0.00	0.00	0.00	0.00	0.00	0.00	0.00	0.00	0.00	0.00	0.00	0.00	0.00	0.00	0.00	0.00	0.00	0.00	0.00
105	0.00	0.00	0.00	0.00	0.00	0.00	0.00	0.00	0.00	0.00	0.00	0.00	0.00	0.00	0.00	0.00	0.00	0.00	0.00
110	0.00	0.00	0.00	0.00	0.00	0.00	0.00	0.00	0.00	0.00	0.00	0.00	0.00	0.00	0.00	0.00	0.00	0.00	0.00
115	0.00	0.00	0.00	0.00	0.00	0.00	0.00	0.00	0.00	0.00	0.00	0.00	0.00	0.00	0.00	0.00	0.00	0.00	0.00
120	0.00	0.00	0.00	0.00	0.00	0.00	0.00	0.00	0.00	0.00	0.00	0.00	0.00	0.00	0.00	0.00	0.00	0.00	0.00
125	0.00	0.00	0.00	0.00	0.00	0.00	0.00	0.00	0.00	0.00	0.00	0.00	0.00	0.00	0.00	0.00	0.00	0.00	0.00
130	0.00	0.00	0.00	0.00	0.00	0.00	0.00	0.00	0.00	0.00	0.00	0.00	0.00	0.00	0.00	0.00	0.00	0.00	0.00
135	0.00	0.00	0.00	0.00	0.00	0.00	0.00	0.00	0.00	0.00	0.00	0.00	0.00	0.00	0.00	0.00	0.00	0.00	0.00
140	0.00	0.00	0.00	0.00	0.00	0.00	0.00	0.00	0.00	0.00	0.00	0.00	0.00	0.00	0.00	0.00	0.00	0.00	0.00
145	0.00	0.00	0.00	0.00	0.00	0.00	0.00	0.00	0.00	0.00	0.00	0.00	0.00	0.00	0.00	0.00	0.00	0.00	0.00
150	0.00	0.00	0.00	0.00	0.00	0.00	0.00	0.00	0.00	0.00	0.00	0.00	0.00	0.00	0.00	0.00	0.00	0.00	0.00
155	0.00	0.00	0.00	0.00	0.00	0.00	0.00	0.00	0.00	0.00	0.00	0.00	0.00	0.00	0.00	0.00	0.00	0.00	0.00
160	0.00	0.00	0.00	0.00	0.00	0.00	0.00	0.00	0.00	0.00	0.00	0.00	0.00	0.00	0.00	0.00	0.00	0.00	0.00
165	0.00	0.00	0.00	0.00	0.00	0.00	0.00	0.00	0.00	0.00	0.00	0.00	0.00	0.00	0.00	0.00	0.00	0.00	0.00
170	0.00	0.00	0.00	0.00	0.00	0.00	0.00	0.00	0.00	0.00	0.00	0.00	0.00	0.00	0.00	0.00	0.00	0.00	0.00
175	0.00	0.00	0.00	0.00	0.00	0.00	0.00	0.00	0.00	0.00	0.00	0.00	0.00	0.00	0.00	0.00	0.00	0.00	0.00
180	0.00	0.00	0.00	0.00	0.00	0.00	0.00	0.00	0.00	0.00	0.00	0.00	0.00	0.00	0.00	0.00	0.00	0.00	0.00

C Range: 0 - 180DEG
 C Interval: 15.0DEG
 Test Speed: HIGH
 Temperature:25.3DEG
 Operators:DAMIN
 Test Date:2019-06-24

γ Range: 0 - 180DEG
 γ Interval: 0.5DEG
 Test System:EVERFINE GO-2000B_V1 SYSTEM V2.0.366
 Humidity:65.0%
 Test Distance:6.345m [K=1.0000]
 Remarks:



LUMINOUS DISTRIBUTION INTENSITY DATA

Test:U:11.998V I:0.0413A P:0.4955W PF:1.0000 Freq:0Hz Lamp Flux:8.74884x1 lm		
NAME: HV28261W	TYPE:	WEIGHT:
SPEC.:	DIM.:	SERIAL No.:
MFR.: Havit Lighting	SUR.:	Shielding Angle:

Table--2

UNIT: cd

C (DEG) γ (DEG)	285	300	315	330	345														
0	3.89	3.89	3.89	3.89	3.89														
5	3.88	3.88	3.87	3.88	3.86														
10	3.79	3.81	3.78	3.80	3.77														
15	3.65	3.67	3.65	3.67	3.65														
20	3.47	3.49	3.46	3.48	3.46														
25	3.24	3.26	3.24	3.25	3.23														
30	3.00	3.00	2.99	3.00	2.97														
35	2.70	2.71	2.70	2.70	2.68														
40	2.40	2.40	2.39	2.39	2.37														
45	2.06	2.08	2.06	2.07	2.06														
50	1.75	1.76	1.74	1.76	1.73														
55	1.43	1.45	1.43	1.45	1.42														
60	1.14	1.15	1.13	1.15	1.12														
65	0.86	0.88	0.86	0.87	0.85														
70	0.61	0.63	0.60	0.62	0.60														
75	0.38	0.39	0.37	0.39	0.37														
80	0.17	0.19	0.17	0.19	0.17														
85	0.01	0.03	0.00	0.02	0.00														
90	0.00	0.00	0.00	0.00	0.00														
95	0.00	0.00	0.00	0.00	0.00														
100	0.00	0.00	0.00	0.00	0.00														
105	0.00	0.00	0.00	0.00	0.00														
110	0.00	0.00	0.00	0.00	0.00														
115	0.00	0.00	0.00	0.00	0.00														
120	0.00	0.00	0.00	0.00	0.00														
125	0.00	0.00	0.00	0.00	0.00														
130	0.00	0.00	0.00	0.00	0.00														
135	0.00	0.00	0.00	0.00	0.00														
140	0.00	0.00	0.00	0.00	0.00														
145	0.00	0.00	0.00	0.00	0.00														
150	0.00	0.00	0.00	0.00	0.00														
155	0.00	0.00	0.00	0.00	0.00														
160	0.00	0.00	0.00	0.00	0.00														
165	0.00	0.00	0.00	0.00	0.00														
170	0.00	0.00	0.00	0.00	0.00														
175	0.00	0.00	0.00	0.00	0.00														
180	0.00	0.00	0.00	0.00	0.00														

C Range: 0 - 180DEG
 C Interval: 15.0DEG
 Test Speed: HIGH
 Temperature:25.3DEG
 Operators:DAMIN
 Test Date:2019-06-24

γ Range: 0 - 180DEG
 γ Interval: 0.5DEG
 Test System:EVERFINE GO-2000B_V1 SYSTEM V2.0.366
 Humidity:65.0%
 Test Distance:6.345m [K=1.0000]
 Remarks: