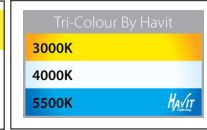
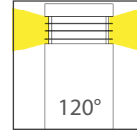


Maxi 900 316 Stainless Steel Bollard Lights

Name	Maxi 900
Material	316 Stainless Steel
Colour	Stainless Steel or Poly Powder Coated Black
IP Rating	IP54
Colour Temp	<div style="display: flex; gap: 5px;"> <div style="width: 10px; height: 10px; background-color: #FFD700; border: 1px solid black;"></div> 3000k <div style="width: 10px; height: 10px; background-color: #ADD8E6; border: 1px solid black;"></div> 4000k <div style="width: 10px; height: 10px; background-color: #00CED1; border: 1px solid black;"></div> 5500k </div>
IK Rating	IK08
Installation Type	Ground - Surface Mounted
Diffuser Type	Frosted Perspex
Lamp Base	E27 or MR16
Max Wattage	15w - Must be used with LED Globes only
Protection Class	240v = 1 (Requires Earth) 12v DC = 3 (No Earth Required)
Lamp Expectancy	<30,000hrs
CRI	CRI>80
Dimmable	No - Not with supplied globes
Warranty	3 Years Replacement



Warranty
Terms & Conditions

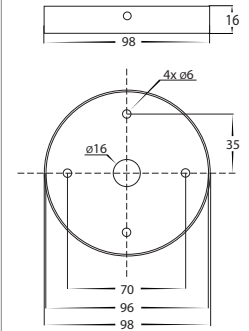


Website

Dimensions



Mounting Base



Product Ordering

Image	Part Number	Colour Temp	Lumens	Input Voltage	Beam Angle	Included LED	Barcode
	HV1608T-SS316-240V	3000k 4000k 5500k	700lm 720lm 740lm	240V AC	120°	TRI Colour 9w E27 LED	9350418016171
	HV1608T-SS316-12V		270lm 285lm 300lm	12V DC		TRI Colour 5w MR16 LED	9350418016164
	HV1608T-BLK-240V		700lm 720lm 740lm	240V AC		TRI Colour 9w E27 LED	9350418016157
	HV1608T-BLK-12V		270lm 285lm 300lm	12V DC		TRI Colour 5w MR16 LED	9350418016140

Optional Havit Compatible Accessories

Image	Part Number	Colour Temp	Input Voltage	Beam Angle	Included LED
	12v DC LED Drivers	See Catalogue or Website for full range of 12v DC LED Drivers			
	HV9507	3000K 4000K 5500K	12v DC	60°	TRI Colour 3 / 5 / 7w MR16 LED
	HV9508		24v DC		
	HV1607	Optional Spike for installation into ground			