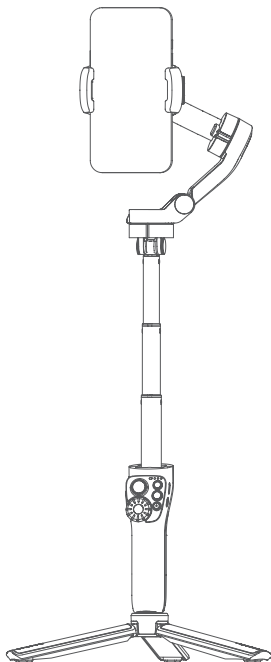




VIMBLE 3

3-Axis Handheld Gimbal for Smartphone

Quick start guide (ENV 1.1)



Contents

1. Overview	2
2. Quick Experience	3
3. Charging	4
4. Landscape & Portrait Mode Switching	4
5. Extend and Reset the Handle	5
6. Tripod	5
7. Connection	6
8. Common Operation	10
9. Function Operation	13
10. Operation mode	14
11. Indicator	16
12. Protection mechanism	17
13. Gimbal Initialization	17
14. Specifications	18

Vimble 3 is a three-axis handheld gimbal suitable for smartphone with extendable bar. It is small and foldable. The gimbal supports landscape and portrait shooting, which can also control phone shooting.

Suggestion

Feiyu Vimble 3 includes below information, please read the information before using the gimbal:

1. Quick start guide
2. Online instruction

Tutorial

· The tutorial videos can be watched at FeiyuTech official website or scan the QR code below.

<https://www.feiyu-tech.com/play/>

· Watch tutorials in video skill page on Feiyu ON.



Download the Feiyu ON App

Scan the QR code to download the app, or search for "Feiyu ON" in the App Store or Google Play.

* Requires iOS 9.0 or above, Android 6.0 or above.

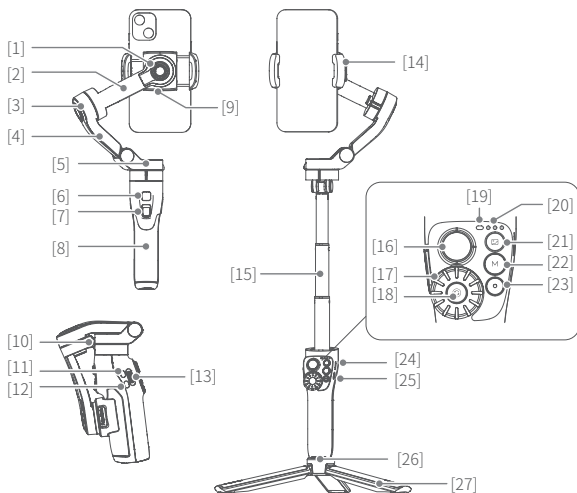


iOS



Android

1. Overview



[1] Roll axis

[2] Cross arm

[3] Tilt axis

[4] Vertical arm

[5] Pan axis

[6] Upper trigger button

(Custom functions in APP)

[7] Lower trigger button

[8] Handle (Built-in battery)

[9] Type-C port for accessories

[10] Limitation

[11] A button

[12] B button

[13] Zoom button

[14] Smartphone holder

[15] Extendable rod

(Extendable range
0~198mm)

[16] Joystick

[17] Dial

[18] Dial function switching
button

[19] Status indicator

[20] Battery indicator

[21] Album button

[22] Mode button

[23] Shutter button

[24] USB-C port

[25] Power button

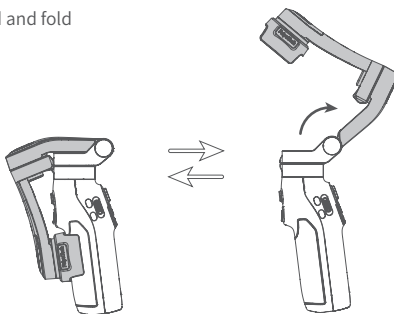
[26] 1/4 inch thread
hole

[27] Tripod

* This product dose NOT include smartphone.

2. Quick Experience

Step1: Unfold and fold



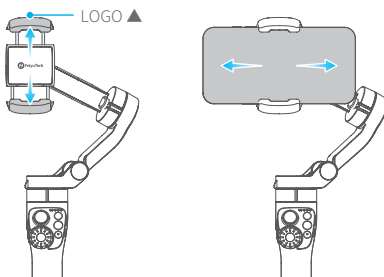
Step2: Smartphone Installation



Please power off the gimbal before install smartphone.
It is recommended to remove the smartphone case before installation.

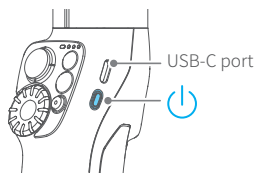
Keep the logo of the smartphone holder upward. Keep the smartphone holder in center.

If the smartphone tilted, please move the smartphone left or right to make it horizontal.



Step3: Power ON/OFF

Long press the power button and release it when you hear the tone.



3. Charging



Please fully charge the battery before power on the gimbal for the first time.

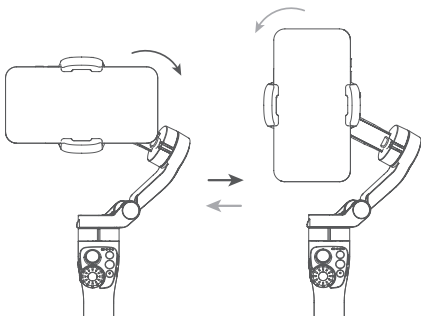
If the battery is too low, red light will flash fast, please charge the gimbal immediately.

Connect the USB 2.0 to USB-C cable to charge. The indicator light is red while charging, and turn green after charging complete.

4. Landscape & Portrait Mode Switching

Double click the mode button or manually rotate the smartphone holder to switch between landscape and portrait mode.

Do not make anti-clockwise rotation in landscape mode, Do not make clockwise rotation in portrait mode.

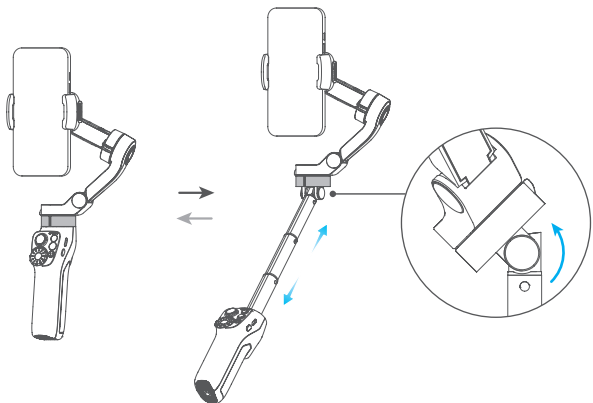


5. Extend and Reset the Handle

- (1) Hold the handle with one hand, hold the bottom of pan axis with other hand.
- (2) Extending: Pull the extendable rod out to suitable length (Extendable range 0~198mm).
Reset: Push upper grip to make the extendable bar down to handle part.

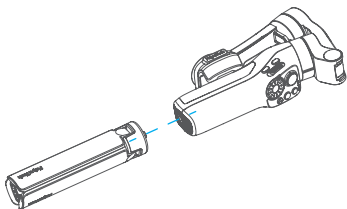


Do not rotate the rod to extend or reset it.



6. Tripod

The tripod is attached to the bottom of the gimbal in a rotating manner. According to the needs of shooting, choose whether to install it.



7. Connection

7.1 Bluetooth Connection

Turn on the gimbal.

Method 1: Download and install Feiyu ON App, run the App, follow the prompts to turn on and connect with the Bluetooth.

Method 2: Turn on the smartphone Bluetooth, connect the gimbal Bluetooth in the setting of phone, e.g. FY_Vimble3_xx.

(If the Bluetooth can't be found, please turn off Feiyu ON App in the background.)

7.2 App Connection

7.2.1 Download the Feiyu ON App



Feiyu ON

Photo / Video	Free panorama	Ultra -wide angle	180° panora
360° panorama	Overlapping image	Light rail mode	Quick panorama
Static timelapse	Track timelapse	Dolly Zoom	Light rail Video
Video editing	Firmware Upgrade	

Scan the QR code to download the app, or search for "Feiyu ON" in the App Store or Google Play.

* Requires iOS 9.0 or above, Android 6.0 or above.



iOS



Android

7.2.2 Operation of App

Steps:

(1) Enable Bluetooth on the smartphone (Smartphone-Setting-Bluetooth). (Please refer to chapter 7.1)

(2) Log in Feiyu ON App (Register for the first time).

(3) Install smartphone on gimbal, then turn on gimbal.

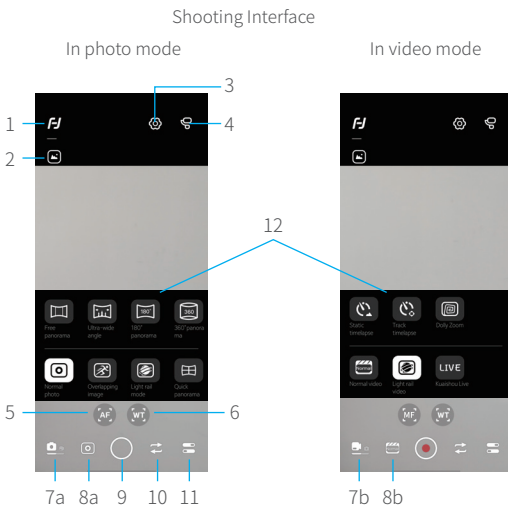
(4) Search gimbal on App, and tap "FY_Vimble3_xx" to connect, it will show

"connection succeed" after a while.

(5) You can control the gimbal via App, including remote control the gimbal to move, switch follow modes and set parameters, etc.

If the connection timeout or fail, please check the Bluetooth connection. Or try to exit and log in the App again.

a. Shooting Interface / Control Interface



1. Homepage

2. Album

3. Setting - Advanced settings

4. Gimbal information

5. Follow focus

6. Zoom

7a. Photo mode, tap to switch to video mode

7b. Video mode, tap to switch to photo mode

8a. Sub-mode of photo mode, tap to expand submenu

8b. Sub-mode of photo mode, tap to expand submenu

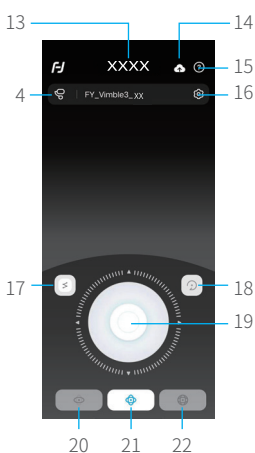
9. Shutter

10. Switch between front and rear camera

11. Camera setting

12. Submenu

Control Interface



- 4. Gimbal information
- 13. Remote Control
- 14. Upgrade
- 15. Tutorial
- 16. Settings
- 17. Set waypoints for timelapse
- 18. Reset
- 19. Virtual Joystick
- 20. Pan mode
- 21. Follow Mode
- 22. All follow Mode

b. Firmware Upgrade

Upgrade type introductions:

Keyboard firmware update	Fix/update or newly add button/touch screen/ interaction functions.
Bluetooth firmware update	Fix/update or newly add Bluetooth functions.
Gimbal firmware update	Fix/update or newly add gimbal control/ function/ parameter and etc.

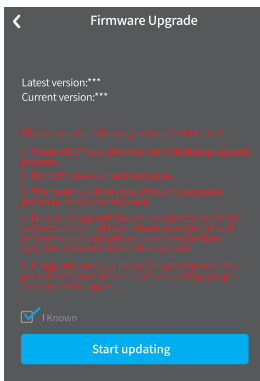
How to update:

- Before starting an update, make sure that the battery level at least medium level.
- Connect Vimble 3 with Feiyu ON App, you will be prompted if a new firmware is available. Please follow the steps below to update it.

(1) Tap upgrade ICON  on App.

(2) Select upgrade type.

(3) Follow the prompts to upgrade the firmware.



· Do not exit Feiyu ON or run it in the background while updating the firmware. Pay attention to on-screen prompts.

Noted:

Gimbal has an update protection function. When the update fails, restart the gimbal, it will return to the previous firmware. Connect the app and update again to resolve the problem. In addition, parts of the new functions require updating two or more firmwares to take effect. It is recommended to update regularly to keep the firmwares of the gimbal as the latest version.

8. Common Operation

- ① **Basic** : Vimble 3 can achieve those functions after balanced gimbal.
- ② **Bluetooth** : New available function which achieved after connected smartphone via Bluetooth with the functions in condition ① still available.
- ③ **APP** : New available function which achieved via Feiyu ON APP with the functions in condition ①, ② still available.


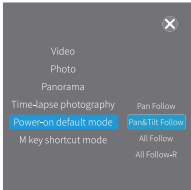
Diagram	Button	Condition	Function
	<p>Power button</p>		<p>Power off:</p> <ul style="list-style-type: none"> · Long press: power on · Single tap: check battery level (while charging)
		Basic	<p>Power on:</p> <ul style="list-style-type: none"> · Long press: power off · Double tap: standby mode (single tap at standby mode to wake up the gimbal)
		APP	<p>Power on:</p> <p>Single tap: enter/exit shortcut menu in APP</p> <p>Can choose video, photo, panorama, time-lapse modes, can set power on default mode, M key shortcut mode (power-on default mode and M key shortcut mode cannot be set as the same mode), the factory setting of power-on default mode is follow mode, M key shortcut mode is pan mode, single tap function button to switch between these two modes.</p>
			






Diagram	Button	Condition	Function
	Joystick	<div style="border: 1px solid black; padding: 2px; display: inline-block;">Basic</div>	<p>Control the movement of the tilt and pan axes</p> <hr style="border-top: 1px dotted black;"/> <ul style="list-style-type: none"> · Select setting option · After enter album: <ul style="list-style-type: none"> · move to left to choose previous photo/video; · move to right to choose next photo/video; · move upward to play/pause; · move downward to play/pause
	Dial function switching button	<div style="border: 1px solid black; padding: 2px; display: inline-block;">Basic</div>	<p>Switch the control object of dial:</p> <ul style="list-style-type: none"> · Single tap: <ul style="list-style-type: none"> · Switch to control focus when controlling zoom; · In other cases, switch to control zoom · Long press: <ul style="list-style-type: none"> · switch to control roll axis/zoom
	Dial	<div style="border: 1px solid black; padding: 2px; display: inline-block;">Basic</div>	<p>(After long press dial function switching button to switch the control object of dial to roll axis)</p> <ul style="list-style-type: none"> · Rotate: control roll axis to rotate <hr style="border-top: 1px dotted black;"/> <div style="border: 1px solid black; padding: 2px; display: inline-block;">APP</div> <ul style="list-style-type: none"> · Rotate: control zoom(default)/focus/ Roll axis
	Album button	<div style="border: 1px solid black; padding: 2px; display: inline-block;">APP</div>	<p>Single tap: enter/exit album</p>
	Mode button	<div style="border: 1px solid black; padding: 2px; display: inline-block;">Basic</div>	<ul style="list-style-type: none"> · Single tap: <ul style="list-style-type: none"> · switch among follow mode, pan follow, all follow mode cyclically (default to be follow mode) · Double tap: <ul style="list-style-type: none"> · landscape and portrait mode switching






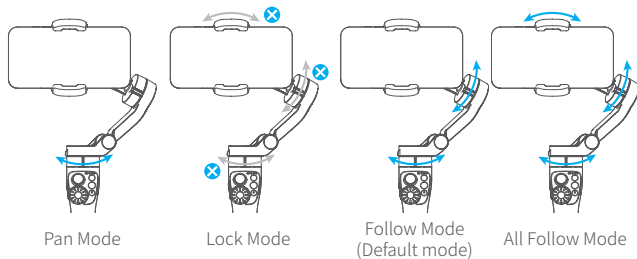
Diagram	Button	Condition	Function
	Shutter button	Bluetooth	When original camera APP is in photo/video mode: · Single tap: take photo, start/stop recording
		APP	· Press halfway: focus · Single tap: take photo, start/stop recording · Long press: switch between photo/video
	Zoom button	Bluetooth	Slide up and down to adjust focus. · Slide up (T direction): zoom in · Slide down (W direction): zoom out
		Basic	(After long press dial function switching button to switch the control object of dial to roll axis) · Long press: mark the current axes position as A/B(while dial is controlling roll axis) · Single tap: return to the position A/B that you have marked
		APP	· Long press: mark the current zoom/focus/axes position as A/B(while dial is controlling zoom/focus/roll axis) · Single tap: return to the position A/B that you have marked
	Upper trigger button	Basic	Long press: enter flash mode (release it to exit)
		APP	Can be customized as: switch front/rear camera, etc

Diagram	Button	Condition	Function
	Lower trigger button	<div style="border: 1px solid black; padding: 2px; display: inline-block;">Basic</div>	<ul style="list-style-type: none"> · Long press: enter lock mode (release it to exit) · Double tap: recenter
		<div style="border: 1px solid black; padding: 2px; display: inline-block;">APP</div>	Triple tap: Switch front/rear camera

9. Function Operation

Mode	Description
Pan Mode	The roll and tilt direction are fixed, and the smartphone moves according to the left-right movements of the user's hand.
Lock Mode	The orientation of the camera is fixed.
Follow Mode (Default mode)	The roll direction is fixed, and the smartphone moves according to the left-right movements, up-down movements of the user's hand.
All Follow Mode	The camera moves according to the user's hand.
Reset	Return to panning mode, three axes return to default position.
Manual Lock	Slide the tilt axis to one position for shooting.
Landscape and Portrait Shot	Assist landscape or portrait shooting

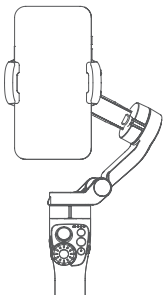


10. Operation mode

The figures below depict the operation modes when using Vimble 3 in portrait mode. The same operation modes apply when used in landscape mode.

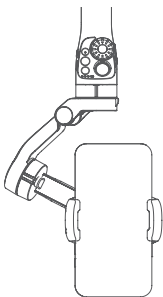
Standard mode (Default):

Double tap trigger button to recenter smartphone.



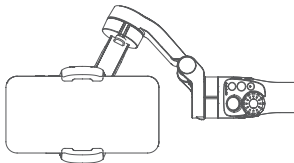
Underslung mode:

Hold gimbal upside down to enter underslung mode. (In which the smartphone can easily capture images from a lower position. User can also hold the tripod to help shooting)



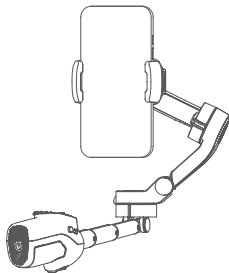
Side grip mode:

Rotate Vimble 3 to the right or left by 90° to make smartphone be horizontal to the ground.

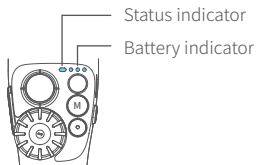


Low position mode:

Extend the built-in extendable rod and adjust the angle as shown to enter low position mode. Use low position mode to shoot from a low angle.



11. Indicator



11.1 Status indicator

Status indicator	Status
Constant Blue light	Bluetooth connected
Blue light flash	Bluetooth disconnected
Blue light keeps flashing	Unpairing Bluetooth
Green light stays on	Charging completed
Green light flash	Initializing
Breathing light (green)	Standby mode
Red light stays on	Charging
Red light flash	Low power, will auto power off

11.2 Battery indicator

Battery indicator	Battery
☀️☀️☀️	Fully charged
☀️☀️●	Medium level of battery
☀️●●	Low power
☀️●●	(Flashing) Please charge the gimbal

12. Protection mechanism

State	Status
Battery is too low	Gimbal power off after alarm sound
Temperature is too high	Gimbal enter standby mode after alarm sound, and send message to App
Power on gimbal without load	
Overload	
Software conflict	Gimbal power off after alarm sound, and send message to App
Remove smartphone after powered on gimbal	Gimbal enter standby mode with green breathing light, and after leaving gimbal in standby mode for 10 minutes, it will auto power off
Power on gimbal when lie it down	
Others	Gimbal power off after alarm sound, and send message to App

13. Gimbal Initialization

Initialization the gimbal when:

- (1) The camera is not in level.
- (2) Not use for a long period of time.
- (3) The ambient temperature changes abruptly.

Method:

Method 1:

Initialize via App (Reset gimbal parameters).

Method 2:

Press album button and mode button together for 1 second;

Please refer to the form in [chapter 11.1 in P16](#) to check the indicator status.

Note: if the initialization is unsuccessful for a long time, please restart the gimbal and retry.

14. Specifications

Product name: Feiyu Vimble 3 3-Axis Handheld Gimbal for Smartphone

Product model: VB3

Max. Tilt Range: $-35^{\circ} \sim +35^{\circ}$

Max. Roll Range: $-50^{\circ} \sim +50^{\circ}$

Max. Pan Range: $-80^{\circ} \sim +174^{\circ}$

Size: About $115 \times 176 \times 65$ mm (folded)

Net gimbal Weight: About 387g (not including tripod)

Battery: 1300mAh

Charging time: About 2.5h

Theoretical Battery Life: About 10h (for different smartphone you installed, it's slightly different)

Payload Capability: ≤ 260 g (after balanced)

Adapter smartphones: iPhone and Android phones (the width of the phone ≤ 88 mm)

Packing List

Vimble 3	×1
Tripod	×1
USB-C cable	×1
Portable bag	×1
Manual	×1

Notice:

1. Make sure motor spinning is not blocked by external force when the product is power on.
2. The product DO NOT contact water or other liquid if the product is not mark waterproof or splash-proof. Waterproof and splash-proof product DO NOT contact sea water or other corrosive liquid.
3. DO NOT disassembly the product except marked detachable. It need send to FeiyuTech after-sales or authorized service center to fix it if you accidently disassembly and cause abnormal work. The relevant costs are borne by user.
4. Prolonged continuous operation may cause the product surface temperature to rise, please operate carefully.
5. DO NOT drop or strike the product. If the product is abnormal, contact FeiyuTech after-sales support.

Storage and Maintenance:

1. Keep the product out of the reach of children and pets.
2. DO NOT leave the product near heat sources such as a furnace or heater. DO NOT leave the product inside of a vehicle on hot days.
3. Please storage the product in dry environment.
4. DO NOT overcharge or overuse the battery, otherwise it will cause damage to the battery core.
5. Never use the product when the temperature is too high or too low.

Official Social Media



Website



Facebook



Youtube



Twitter



Instagram



Guilin Feiyu Technology Incorporated Company
www.feiyu-tech.cn | support@feiyu-tech.com | +86 773-2320865

This document is subject to change without notice.