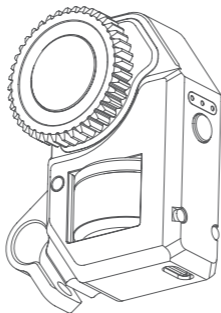




Feiyu SCORP Focus Motor

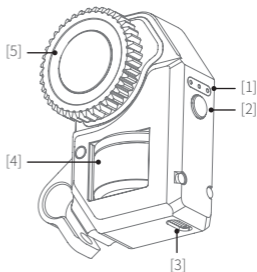
Quick Start Guide V1.0 Model:FM1



Visit online manual

1. Overview

- [1] Indicator
- [2] M button
- [3] Power port
- [4] Roller
- [5] Gear



2. Installation

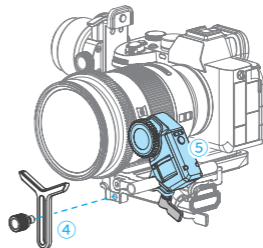
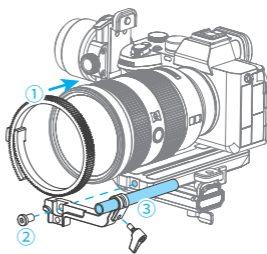
① Attach the focus gear strip to the lens focus ring or the zoom ring.

② Attach the fixed bracket to the quick release plate of gimbal via hexagonal screw.

③ **Insert the aluminium rod:** Insert aluminium rod and move it to an appropriate position, then tighten the thumb screw (remove lens holder if needed)

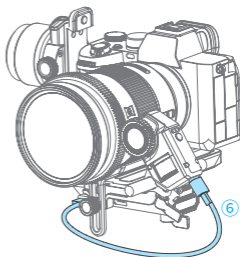
④ **Install lens holder :** Install the lens holder on the fixed bracket as needed.

⑤ **Attach the focus motor:** Attach the focus motor to an appropriate position, ensuring the motor gear and gear strip make good contact, tighten the thumb screw.



⑥ **Connection:** Connect the focus motor power port to an extension port which on the fixed plate via cable.

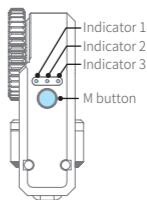
※ **After the installation is complete, please balance the gimbal before turn it on.**



3. Usage for focus motor

Indicator

Indicator	Status	Description
Indicator 1	Blinks once slowly	Not calibrated yet
	Blinks once quickly	Calibrating
	Turn off	Calibration complete
Indicator 2	Keeps on	Controlling by gimbal
Indicator 3	Keeps on	Control inversely



M button operation

Single tap Calibrate automatically (Focus motor rotate the focus gear strip to mechanical limit automatically, and then rotate in opposite direction to reach the other mechanical limit)

Double tap Calibrate by hand* (Turn the multifunction knob to control the focus motor reach the starting point on the lens, and turn it to reach the end point, single tap M button again to finish.

Triple tap Knob control the focus motor inversely

Long press Indicator on/off

*For lenses without a mechanical limit, please calibrate it by hand.

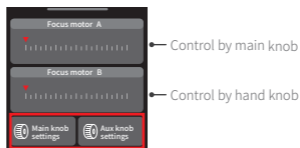
4. Use gimbal to control focus motor

4.1 Set control option

4.1.1 Set on Feiyu SCORP Pro gimbal

Set via screen: Swipe up on touch screen, set multifunction knob control option as focus motor in "Main knob setting" or "Handle knob setting", then the focus motor can be controlled by corresponding knob

Main knob control the focus motor which connect with extension port 1,
handle knob control the focus motor which connect with extension port 2.

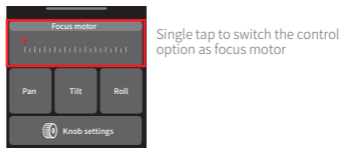


Set the control option as focus motor

Set via button: Long press the knob function switching button to switch the control option of Multifunction knob (Main knob) as focus motor 1.

4.1.2 Set on other gimbals in SCORP series

Set via screen: Swipe up on touch screen, single tap the first line to switch the control option of Multifunction knob as focus motor, then the focus motor can be controlled by knob.



Set via button: Long press the knob function switching button to switch the control option of Multifunction knob as focus motor.

4.2 Control via Multifunction knob

Turn Multifunction knob to control focus motor to adjust focus/zoom.

List

- | | |
|--------------------|----|
| ① Focus motor | X1 |
| ② Focus gear strip | X1 |
| ③ Fixed bracket | X1 |
| ④ Aluminium rod | X1 |
| ⑤ Cable | X1 |
| ⑥ Thumb Screws | X2 |
| ⑦ Hexagonal screw | X1 |
| ⑧ Hex wrench | X1 |



①



②



③



④



⑤



⑥



⑦



⑧

Specification

Product name: Feiyu SCORP Focus Motor

Product model: FM1

Operating Temperature: - 20°C to 55°C

Weight: 108g

Dimensions: 80*70*24mm

Maximum torque: 0.38 N.m

Operating current: no-load current: 35mA, current when motor locked: 660mA

Operating Voltage: 5V

Rod clamp inner diameter: 10mm

Gear teeth: Module: 0.8, Number of gear teeth: 40

Compatible Gimbals: Feiyu SCORP Pro/Feiyu SCORP/Feiyu SCORP-C/Feiyu SCORP-Mini

Notice

1. Make sure motor spinning is not blocked by external force when the product is power on.
2. The product DO NOT contact water or other liquid if the product is not mark waterproof or splash-proof. Waterproof and splash-proof product DO NOT contact sea water or other corrosive liquid.
3. DO NOT disassembly the product except marked detachable. It need send to FeiyuTech after-sales or authorized service center to fix it if you accidentally disassembly and cause abnormal work. The relevant costs are borne by user.
4. Prolonged continuous operation may cause the product surface temperature to rise, please operate carefully.
5. DO NOT drop or strike the product. If the product is abnormal, contact FeiyuTech after-sales support.

Storage and Maintenance

1. Keep the product out of the reach of children and pets.
2. DO NOT leave the product near heat sources such as a furnace or heater. DO NOT leave the product inside of a vehicle on hot days.
3. Please storage the product in dry environment.
4. Never use the product when the temperature is too high or too low.

* Not include camera and gimbal.



Website



Facebook



Youtube



Twitter



Instagram



WeChat



Weibo



Tik Tok/抖音

This document is subject to change without notice.

If you have any questions about this document, please contact us by the following ways.

Manufactured by: Guilin Feiyu Technology Incorporated Company

Website: www.feiyu-tech.com

Tel: +86 773-2320865

E-mail: support@feiyu-tech.com