

# AK2000S

3-Axis Stabilized Handheld Gimbal for Camera

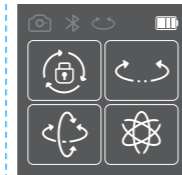
## Quick Start Guide

EN V1.1

### Overview

#### Touch Screen

- Camera Connection
- Bluetooth
- Multifunction Knob Control
- Battery Level



- All Lock Mode
- Pan Mode
- Follow Mode
- All Follow Mode

#### Joystick

Single tap: Switch between pan mode & lock mode  
Double tap: Follow mode  
Triple tap: All Follow mode

#### Mode Button

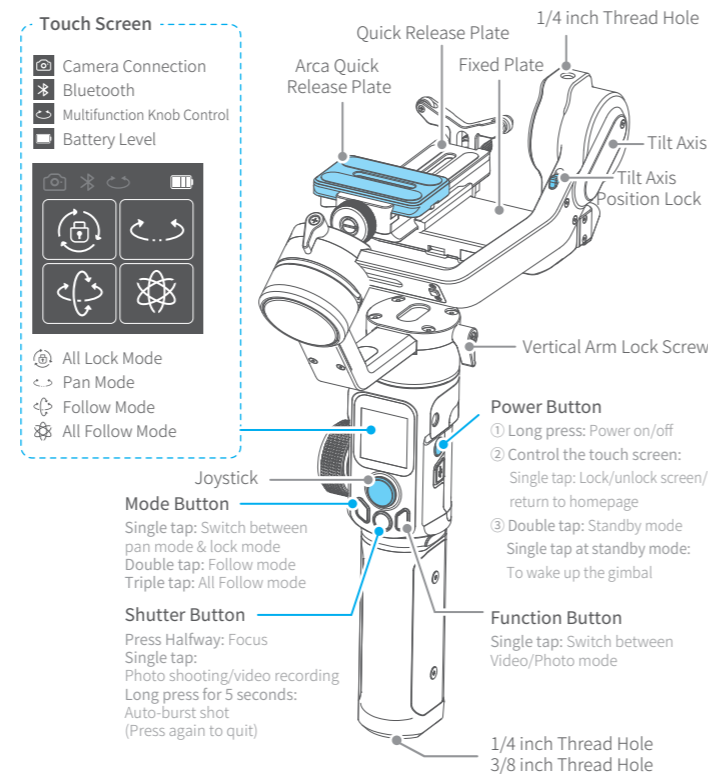
Press Halfway: Focus  
Single tap: Photo shooting/video recording  
Long press for 5 seconds: Auto-burst shot (Press again to quit)

#### Shutter Button

Single tap: Switch between Video/Photo mode

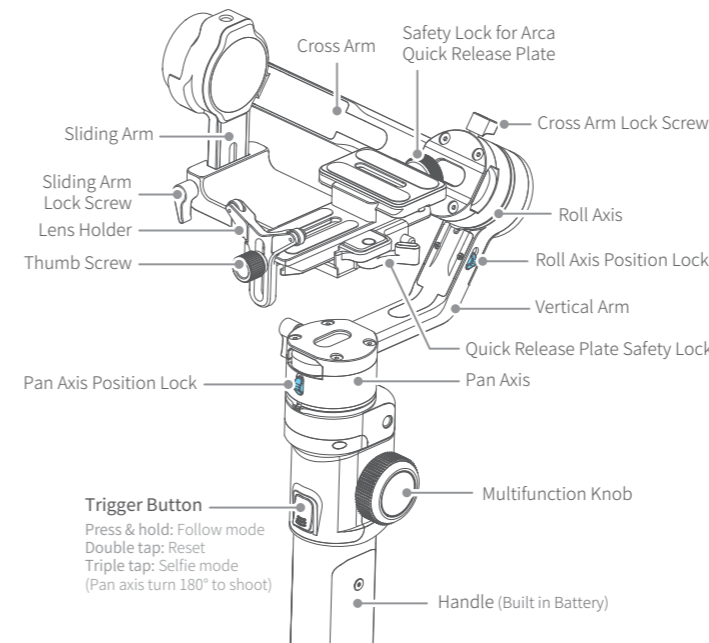
#### Function Button

Single tap: Switch between Video/Photo mode



\* This product does not include the camera.  
Scan QR code to download detailed manual for more guidance of the gimbal.

1



### Specifications

Max. Tilting Range	230°	Theoretical Battery Life	14h (well-balanced)
Max. Rolling Range	360°	Weight	About 1100g
Max. Panning Range	360°	Payload Capability	2200g (well-balanced)
Tilt Follow Speed	2°/s ~ 75°/s	Compatible Cameras*	Canon, SONY, Panasonic and etc.
Pan Follow Speed	3°/s ~ 150°/s		

\* Please download the detailed manual for the specific compatible camera and lens.

2

### Quick Start Guide Please read the detailed manual before you begin.

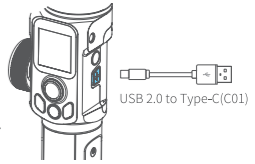
#### TIPS

- 1) Please mount the camera and balance it before Power ON.
- 2) When the battery is low, please charge the gimbal.
- 3) When not in use for a long time, power off the gimbal.
- 4) Experience the basic features on AK2000S soon after following the steps as below.

### 1 Charging

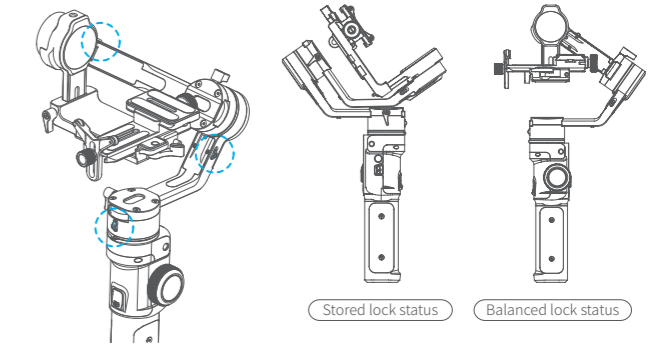
Please fully charge the battery before power on the gimbal for the first time.

Open the USB rubber cover. Connect the USB 2.0 to Type-C(C01) cable to charge. Quick charge is available.



### 2 Position Lock

Each rotating axis has a position lock for convenient balancing and storage. Be sure to unlock the position locks before using the gimbal.



3

### Download the Feiyu ON App

Scan the QR code to download the app, or search for "Feiyu ON" in the App Store or Google Play.

\* Requires iOS 9.0 or above, Android 6.0 or above.



iOS Version

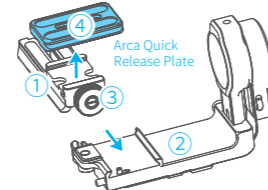


Android Version

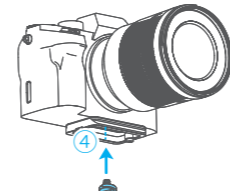
### 3 Camera Installation

Make sure the battery and memory card are installed before camera installation.

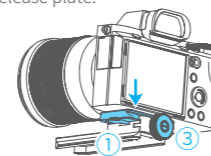
Step 1: Mount quick release plate ① on fixed plate ②, lock it. Loosen the ARCA quick release plate safety lock ③, take out ARCA quick release plate ④.



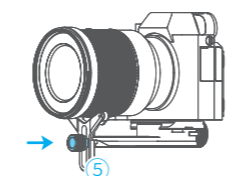
Step 2: Mount camera on ARCA quick release plate ④.



Step 3: Insert ARCA quick release plate directly into quick release plate ①, tighten the safety lock ③ for ARCA quick release plate.



Step 4: Install lens holder ⑤ to support lens, and tighten the thumb screw.



### 4 Gimbal Balancing

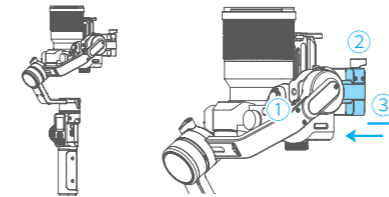
#### TIPS

- 1) Before balancing the gimbal, please lock the gimbal at the balanced lock status, and the lens cover should be removed from the camera and the memory card needs to be inserted to the camera to complete all the connections to ensure that the camera is ready for shooting.
- 2) During balancing the gimbal, make sure the camera and gimbal are all powered off.
- 3) If it is needed to add accessories after the balance is completed, gimbal needs to be re-balanced again.

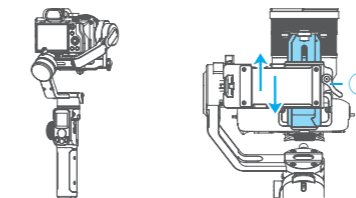
4

#### 4.1 Balance Tilt Axis

- (1) a. Unlock the tilt axis position lock ①, turn the camera lens upwards, and check the gravity center of camera.
- b. Loosen the sliding arm lock screw ②, slide the sliding arm ③ to balance the camera.
- c. Tighten the sliding arm lock screw ②, when the camera lens keeps upwards that means balanced.

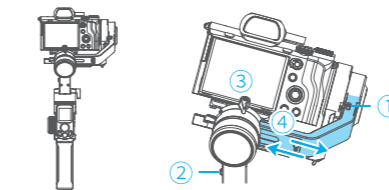


- (2) a. Place the camera lens forwards, check the gravity center of camera.
- b. Unlock the quick release plate safety lock ①, adjust camera position until it can stay stable at any angles.
- c. Lock the safety lock ①. Tilt the camera up or down, if it stays stable, it means balanced.



#### 4.2 Balance Roll Axis

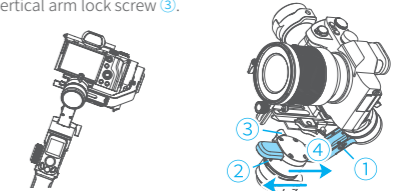
- a. Tighten the tilt axis position lock ①, unlock the roll axis position lock ②, check gravity center of camera.
- b. Loosen the cross arm lock screw ③, slide cross arm ④ to balance the camera position.
- c. Tighten the cross arm lock screw ③, and tilt the camera to the left or right, if it stays stable, it means balanced.



5

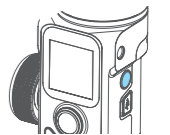
#### 4.3 Balance Pan Axis

- a. Tighten the roll axis position lock ① after balanced tilt axis and roll axis. Unlock pan axis position lock ②, loosen vertical arm lock screw ③.
- b. Hold the handle aslant to 15°~ 20°, check the camera's movement. (Roll axis will point down if not balanced)
- c. Slide vertical arm ④ to balance it until the camera stays there at any angles, balance succeeded.
- d. Tighten the vertical arm lock screw ③.



### 5 Power ON/OFF

Unlock position lock of 3 axis before power on. Long press power button, release the button until it shows **FJ** on display.



#### Detailed Manual

Scan the QR code to get the latest user manual or download it from the official website

<https://www.feiyu-tech.com/ak2000s/>



6