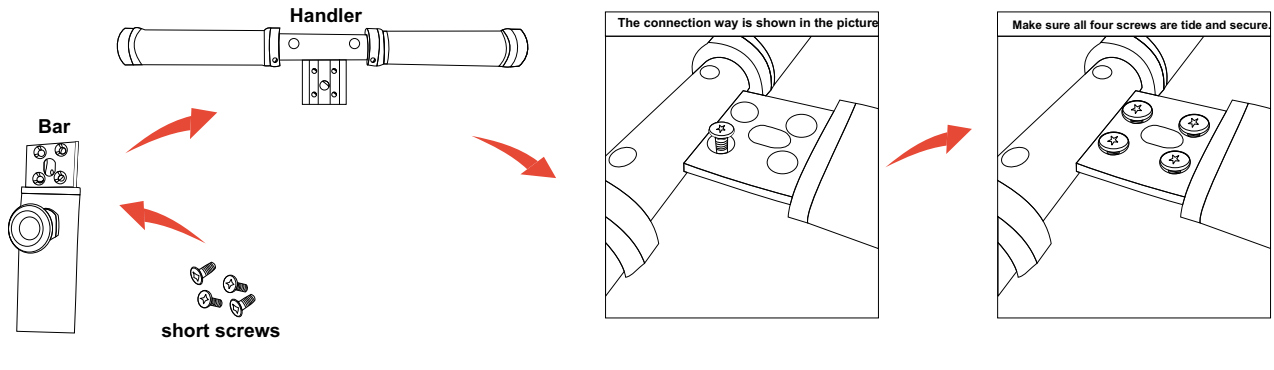
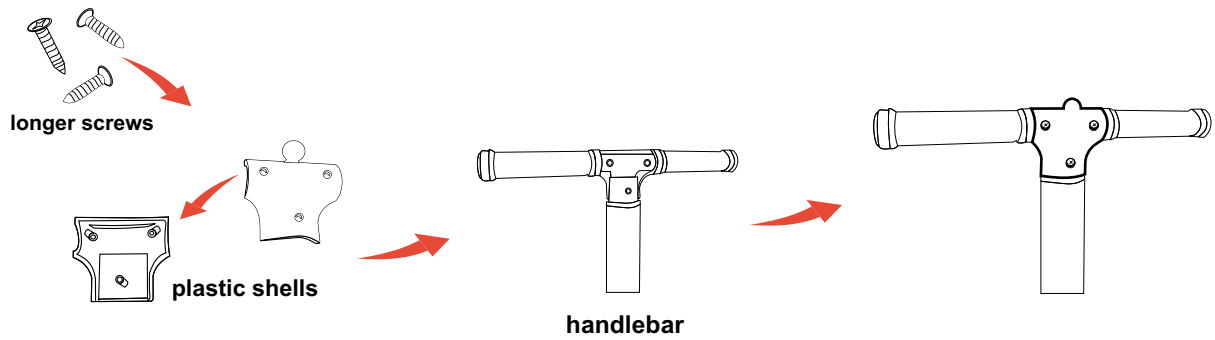


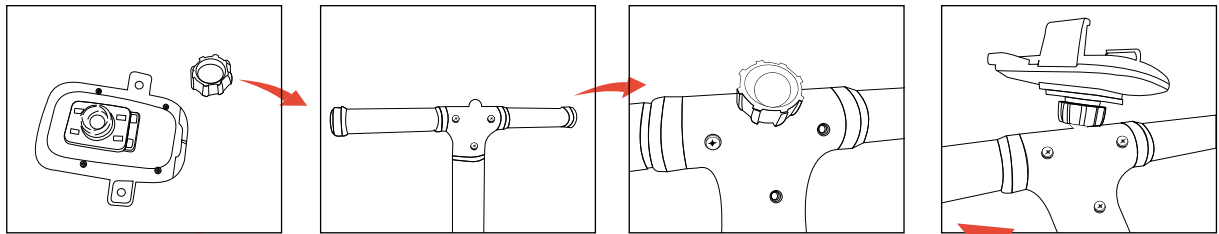
**Step One:** Connect Handler to the Bar using 4 short screws.



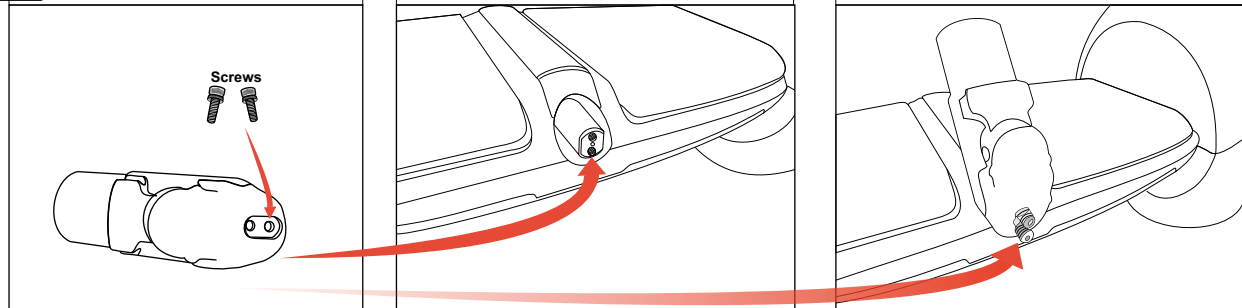
**Step Two:** Connect two plastic shells to the handlebar like is shown in the pictures: To connect the plastic shells use Three longer screws



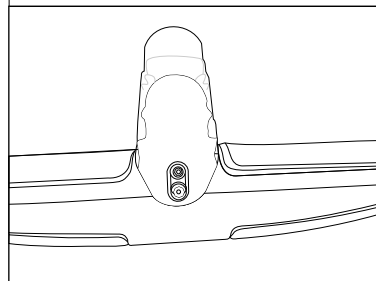
**Step Three:** Connect Cell phone holder as is shown in the picture



**Step Four:** Insert Screw in the short bar



Make sure all two screws are tight and secure.



Make sure all two screws are tight and secure.

