

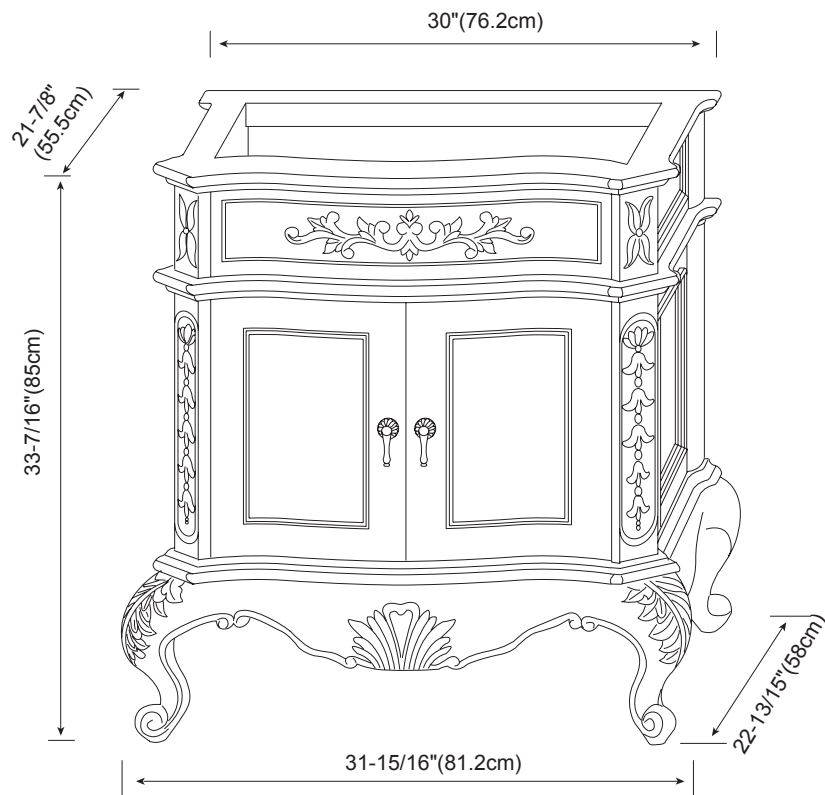
Model : 072930-FINISH

**Features :** Hand Crafted and Detailed Ornamentation from One Piece of Solid Wood  
2 Soft Close Doors with Dovetail Construction  
Matching Finish Throughout the Interior  
Matching Mirror, Medicine Cabinet, Curio Cabinet and Overjohn Cabinet

All Ronbow cabinets are made of solid hardwood or hardwood plywood and meet strict CARB Standards.  
No particle Board or Micro-Density Fiberboard (MDF) are used.

**Available finishes:**  
Colonial Cherry F11

**Available tops:**  
Bordeaux Stone Top  
Bordeaux Backsplash



**Model : 072936-FINISH**

**Features :** Hand Crafted and Detailed Ornamentation from One Piece of Solid Wood  
2 Soft Close Doors and 2 Soft Close and Full Extension Drawers with Dovetail Construction  
Matching Finish Throughout the Interior  
Matching Mirror, Medicine Cabinet, Curio Cabinet and Overjohn Cabinet

All Ronbow cabinets are made of solid hardwood or hardwood plywood and meet strict CARB Standards.  
No particle Board or Micro-Density Fiberboard (MDF) are used.

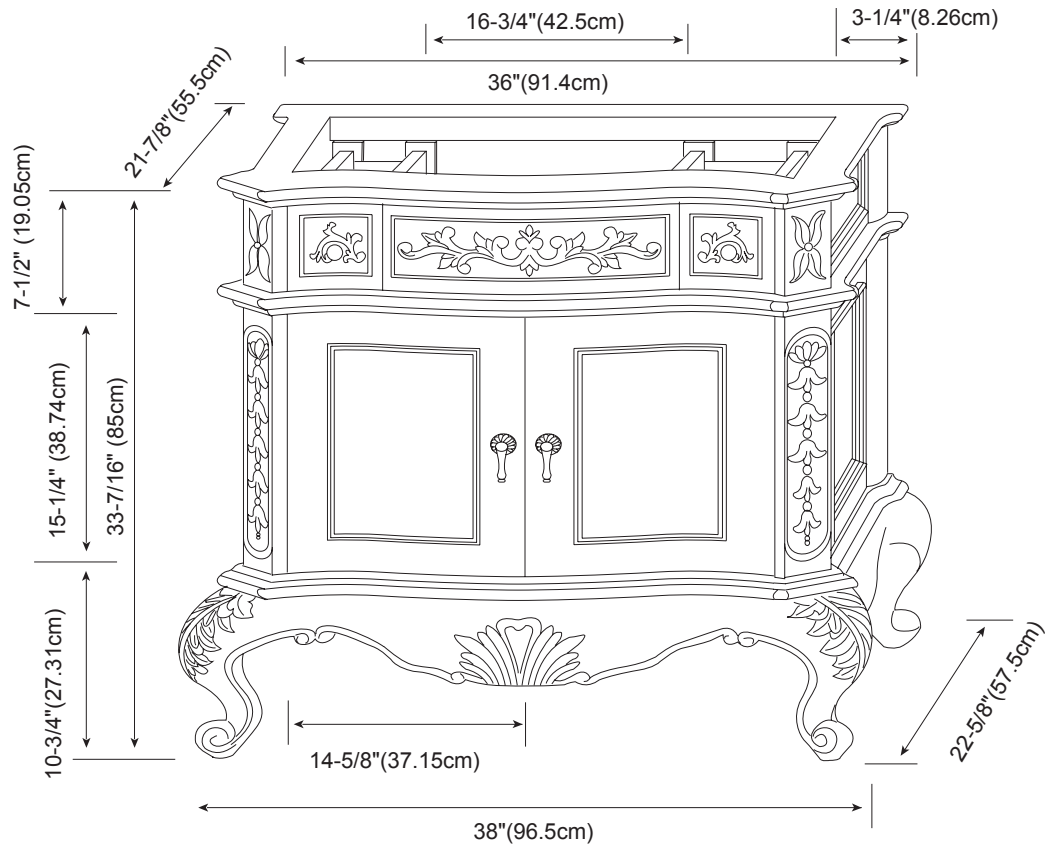
**Available finishes:**

Colonial Cherry F11

**Available tops:**

Bordeaux Stone Top

Bordeaux Backsplash



Model : 072948-FINISH

**Features :** Hand Crafted and Detailed Ornamentation from One Piece of Solid Wood  
1 Soft Close Door and 6 Soft Close and Full Extension Drawers with Dovetail Construction  
Matching Finish Throughout the Interior  
Matching Mirror, Medicine Cabinet, Curio Cabinet and Overjohn Cabinet

All Ronbow cabinets are made of solid hardwood or hardwood plywood and meet strict CARB Standards.  
No particle Board or Micro-Density Fiberboard (MDF) are used.

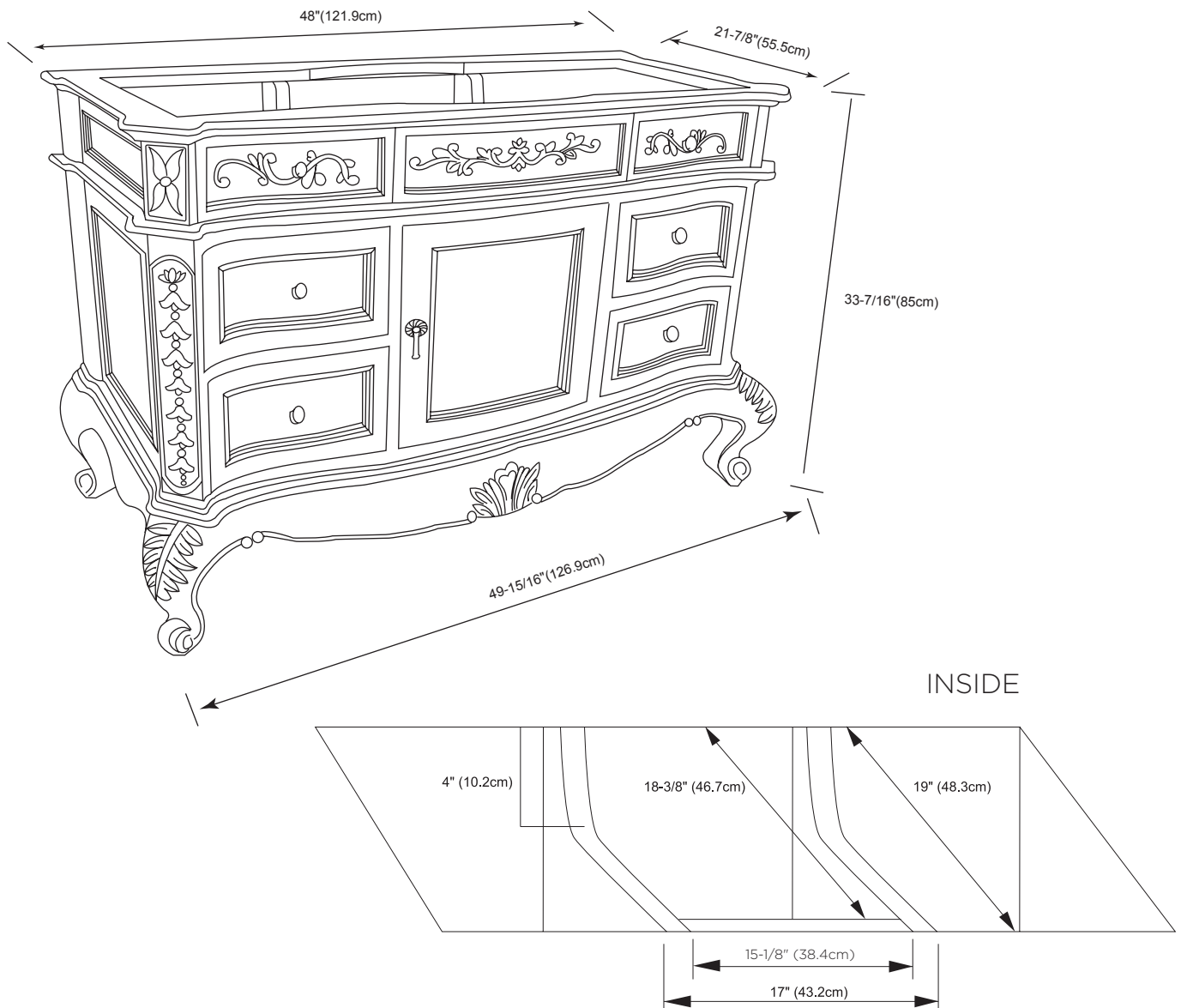
**Available finishes:**

Colonial Cherry F11

**Available tops:**

Bordeaux Stone Top

Bordeaux Backsplash



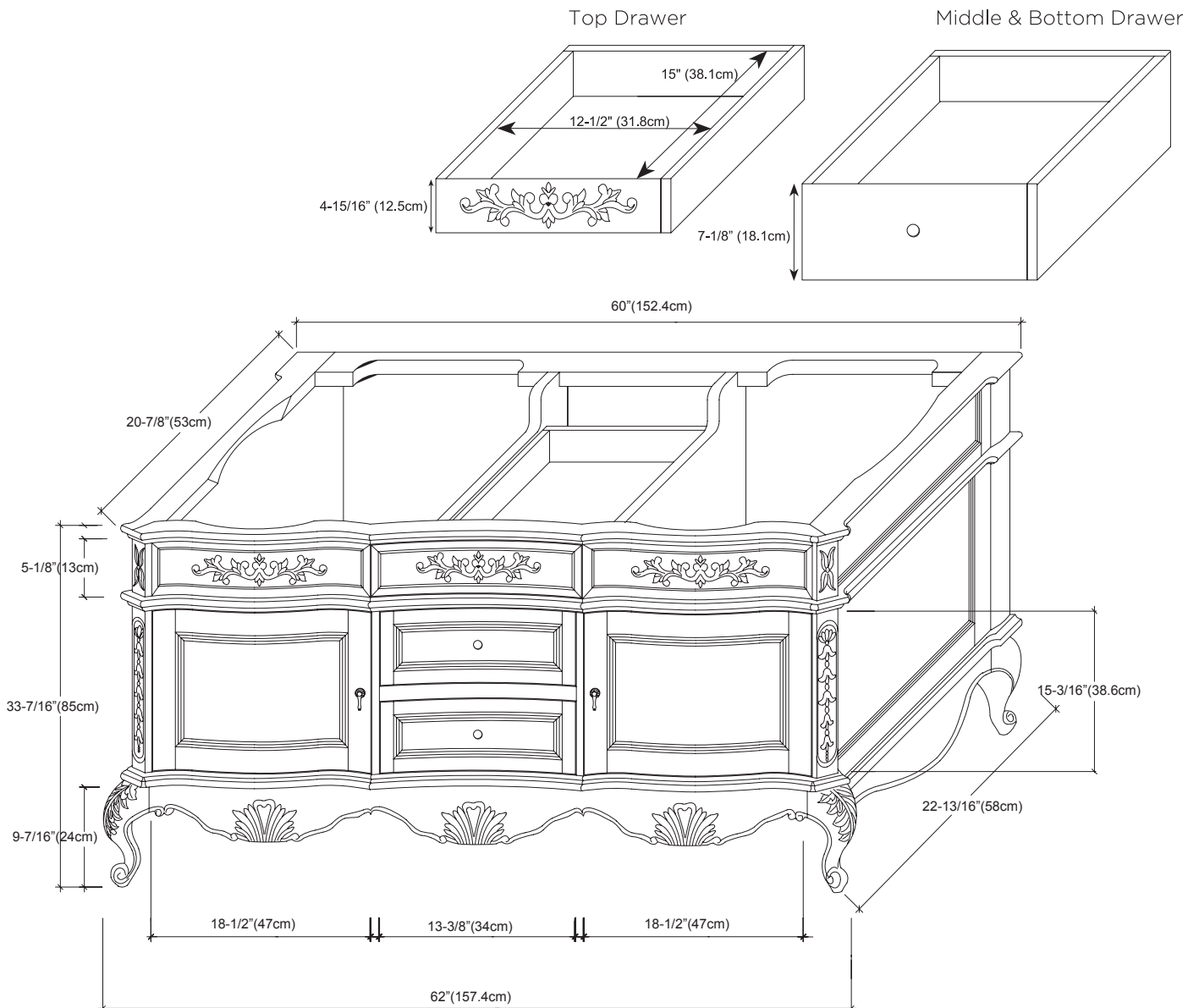
Model : **072960-FINISH**

**Features :** Hand Crafted and Detailed Ornamentation from One Piece of Solid Wood  
 2 Soft Close Doors and 3 Soft Close and Full Extension Drawers with Dovetail Construction  
 Matching Finish Throughout the Interior  
 Matching Mirror, Medicine Cabinet, Curio Cabinet and Overjohn Cabinet

All Ronbow cabinets are made of solid hardwood or hardwood plywood and meet strict CARB Standards.  
 No particle Board or Micro-Density Fiberboard (MDF) are used.

**Available finishes:**  
 Colonial Cherry F11

**Available tops:**  
 Bordeaux Stone Top  
 Bordeaux Backsplash

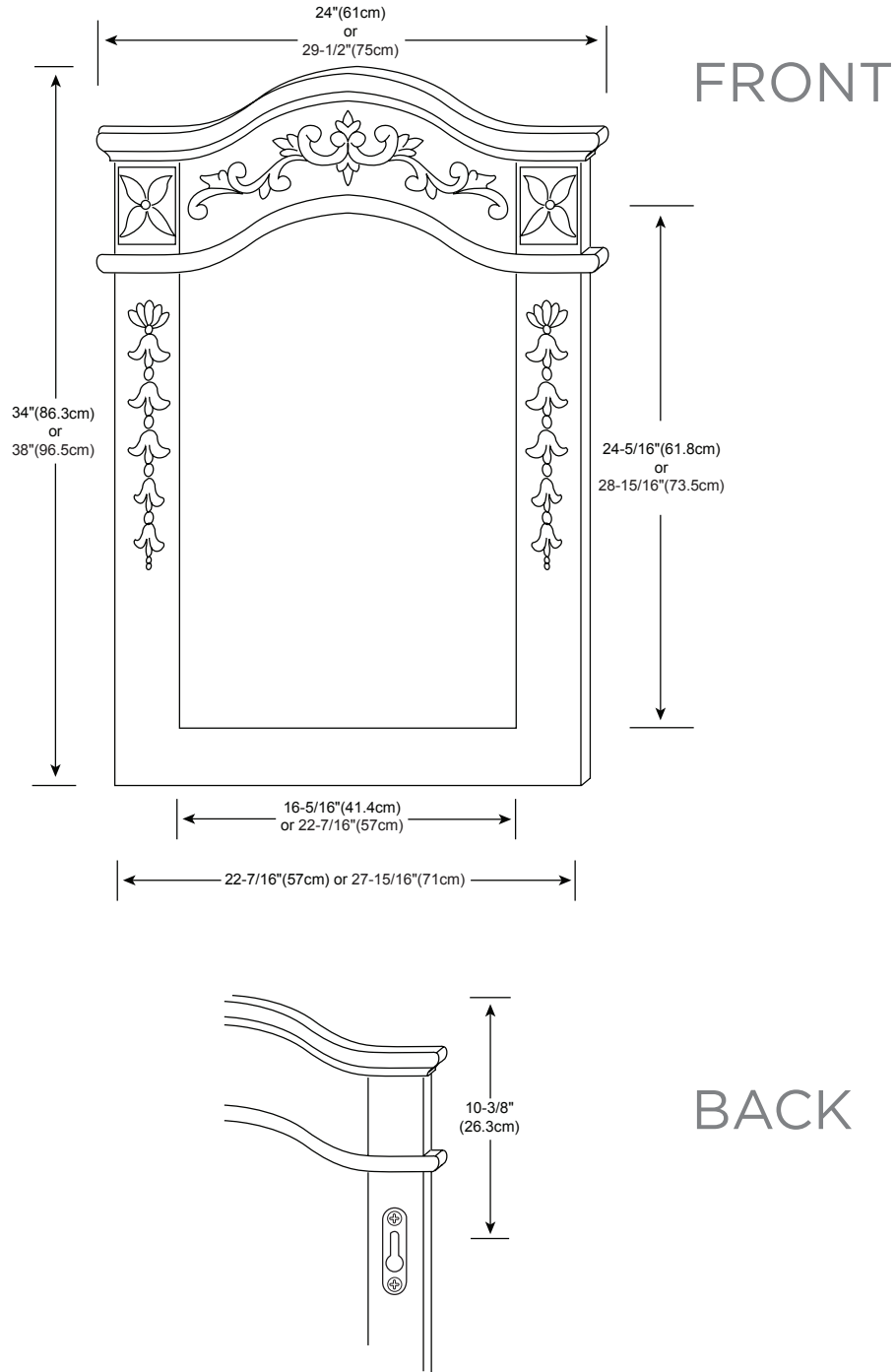


Model : 607224-FINISH  
607230-FINISH

Features : Hand Crafted and Detailed Ornamentation from One Piece of Solid Wood

All Ronbow cabinets are made of solid hardwood or hardwood plywood and meet strict CARB Standards.  
No particle Board or Micro-Density Fiberboard (MDF) are used.

Available finishes:  
Colonial Cherry F11



**Model : 610028-FINISH**

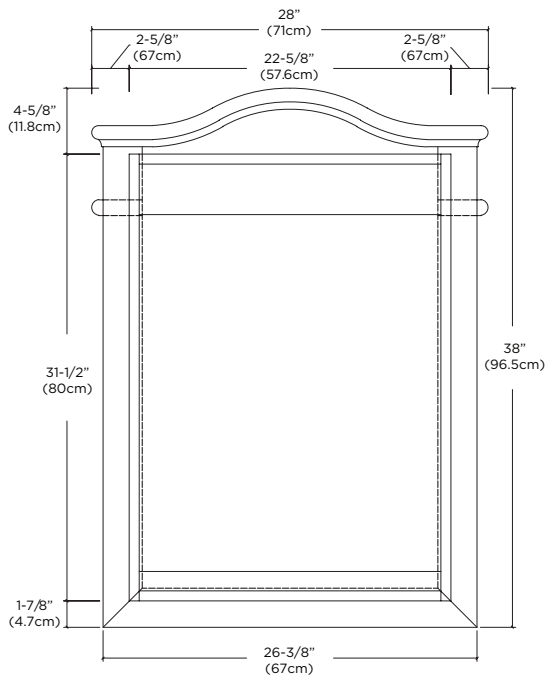
**Features :** Hand Crafted and Detailed Ornamentation from Solid Wood  
 2 Mirrors, 1 Door and 2 Adjustable Shelves  
 Recessed and Surface Mounting

All Ronbow cabinets are made of solid hardwood or hardwood plywood and meet strict CARB Standards.  
 No particle Board or Micro-Density Fiberboard (MDF) are used.

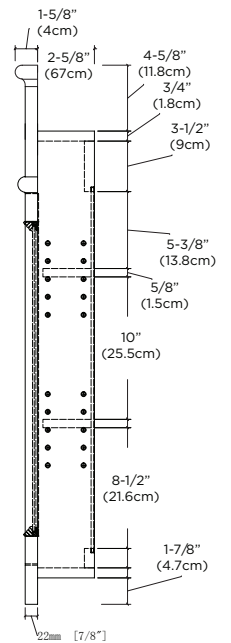
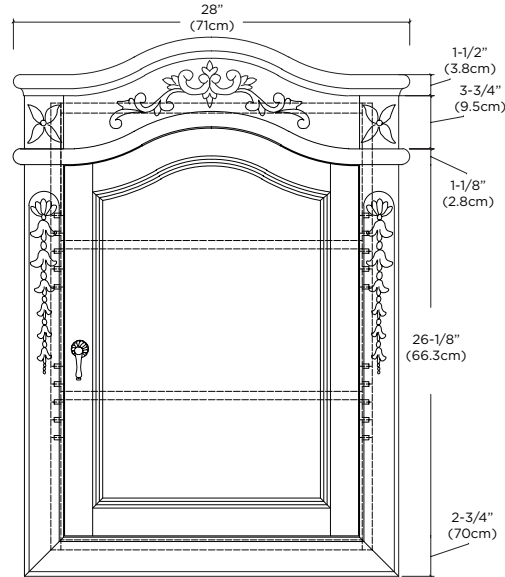
**Available finishes:**  
 Colonial Cherry F11

**Recommended rough wall opening:**  
 31-1/16" (81.5cm) HEIGHT  
 23-1/4" (59.1cm) WIDTH

**FRONT**



**SIDE**



Model : 688026-FINISH

**Features :** Hand Crafted and Detailed Ornamentation from Solid Wood

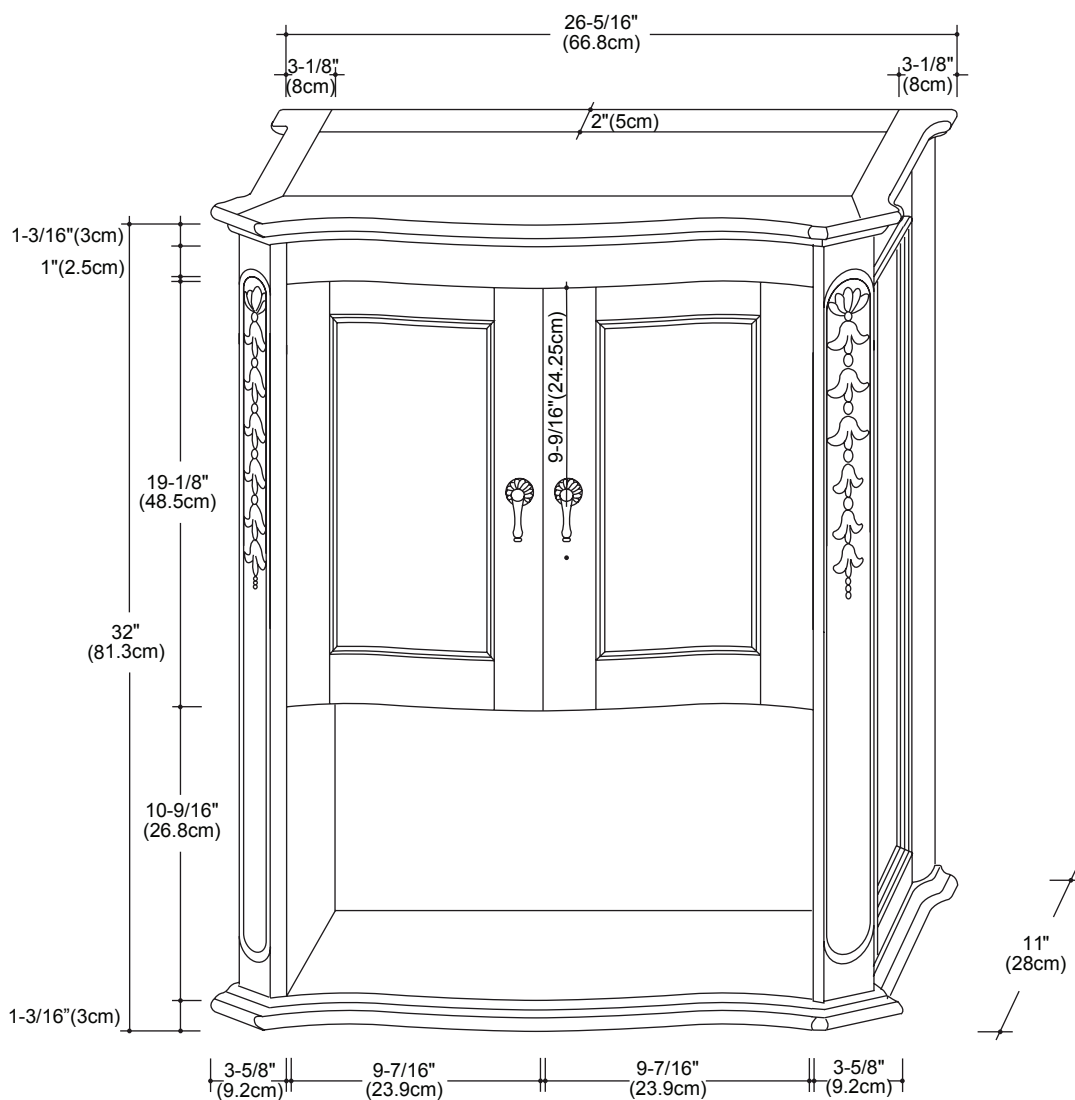
2 Doors

Mounting Hardware included

All Ronbow cabinets are made of solid hardwood or hardwood plywood and meet strict CARB Standards.  
No particle Board or Micro-Density Fiberboard (MDF) are used.

**Available finishes:**

Colonial Cherry F11



Model : 675028-FINISH

**Features :** Hand Crafted and Detailed Ornamentation from Solid Wood  
2 Doors, 1 Soft Close Drawer and 2 Shelves

All Ronbow cabinets are made of solid hardwood or hardwood plywood and meet strict CARB Standards.  
No particle Board or Micro-Density Fiberboard (MDF) are used.

**Available finishes:**  
Colonial Cherry F11

