

Sensors Dimmers and Switching

360° Ceiling Mount PIR

Description:



The PIR32 adopts a sensitivity detector and integrated circuit. It gathers automatism, conveniently and safely saving energy with practical functions. Is designed to automatically turn lights on when motion and body heat is detected. It utilizes the infrared energy from humans as a control-signal source; it can start the load at once when one enters the detection field. It can identify between day and night, easy to install and has a wide variety of uses. Major Tech Infrared Motion Sensor is ideal for office or rooms in the house.

Product Features:

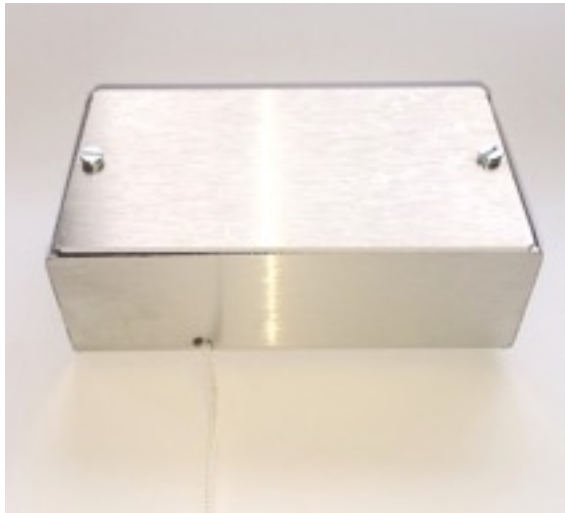
- 360° Wide-angle PIR sensor
- 3 - 2000 LUX (Adjustable)
- Identify day and night automatically
- Time-delay adjustment
- Can adjust ambient light according to your requirements
- Time-delay is added continually
- Ceiling mounted

Product Specifications:

Power sourcing / frequency	220V AC ~ 240V AC / 50Hz
Ambient light	3 - 2000 LUX (Adjustable)
Rated load	2000W (incandescent lamp) 500W (energy-saving lamp)
Detection speed / range Motion Speed	0.6-1.5m/s, Range: 360 °
Detection distance	6m Max (24°C)
Time-delay	Min 12sec ± 3sec / Max 15min ± 2min
Installation height	2.2m ~ 4m
Working temperature / humidity	-20 +~ 40°C / <93% RH
Power consumption	Work : 0.45W (work) / Static : 0.1W (static)

Pull Switch (1 or 2 way)

Description:



The Striking Energy Pull Switch high quality Stainless Steel Pull switch can be installed in any of our G2 range of space heaters.

This switch will makes switching your heater on and off AT the heater itself easy.

Can be installed on the heater OR as a wall mounted unit

Ideal for bathroom installations

Product Features:

- High Quality Stainless steel housing
- Gotak Switch rated to 20 000 switches
- Available in One or Two way versions
- One Way - Basic ON / OFF function
- Two Way - For double element heaters. ONE / TWO / OFF
- Ceiling, Heater or wall mounted

2 Kw Remote Dimmer and Remote

Description:



Stand alone Remote controlled dimmer with 3 settings. This dimmer is the same unit that we use in our G2 2000 Dim heater.

Saves you electricity
Control your comfort level remotely
Easy to install after you installed your heaters.

Product Features:

- High Quality stainless steel enclosure
- Wire access from bottom or back
- Wall or ceiling mounted - Surface mount with standard wall plugs
- One remote control multiple dimmers
- Protection fuse

Product Specifications:

Power sourcing / frequency	220V AC ~ 240V AC / 50Hz
Max heaters	1 x G2 1500 1 x G2 2000
Rated load	2000W
Warranty	One year
Detection distance	6m Max (24°C)
Dimensions	140mm (Height) x 280mm (Width) x 45mm (Depth)
Installation height	2.0 ~ 3m
Working temperature / humidity	-20 +- 50°C / <93% RH
Power consumption	1500 - Level 1: 600watt, Level 2: 1200watt, Level 3: 1500 Watt 2000 - Level 1: 800watt, Level 2: 1400watt, Level 3: 2000 Watt
Batteries	Remote uses 2 x AAA

2 Kw SlimDimmer



Control the heat output of your singlebar heater using reliable Solid State Relay Technology in a small low profile Stainless steel case.

Product Features:

- High Quality stainless steel enclosure
- Wire access from bottom or back
- Wall or ceiling mounted - Surface mount with standard wall plugs
- 10 - 100% Heat output
- On / Off switch

Product Specifications:

Power sourcing / frequency	220V AC ~ 240V AC / 50Hz
Max heaters	1 x G2 1500 1 x G2 2000
Rated load	2000W
Warranty	One year
Dimensions	140mm (Height) x 280mm (Width) x 45mm (Depth)
Working temperature / humidity	-20 +- 50°C / <93% RH
Power consumption	1500 : 10 - 1500 Watt 2000 : 10 - 2000 Watt