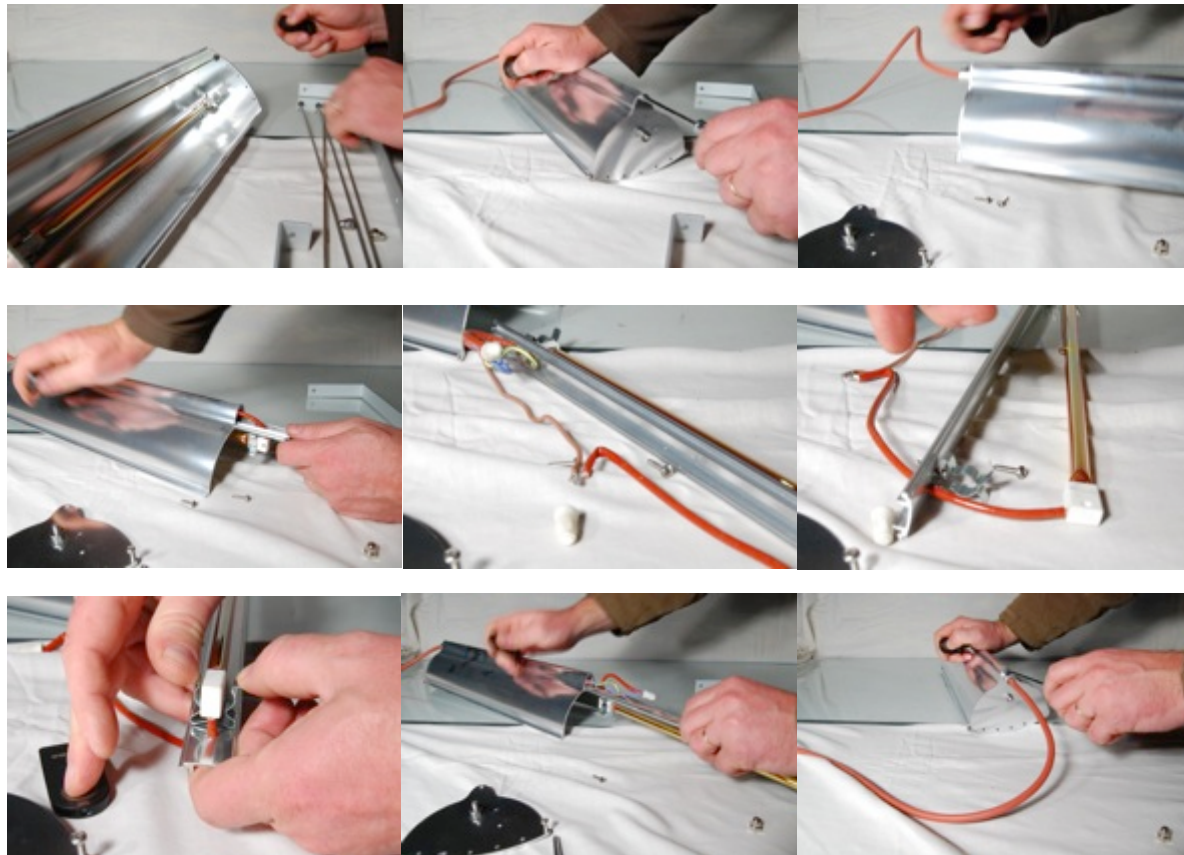


Replacing the element on a Generation 1 heater



1. Disconnect the power supply and ensure that the element is not illuminated and that the heater body and element are cool.
2. Unscrew the 2 nuts that keeps the body attached to the wall bracket and remove the main body from the bracket. Remove the grids by gently
3. Unscrew the 3 screws on the side plate apposite to the electrical connection .
4. Loosen the black screw on the connection block (Where the cable goes into the heater) to release the heat resistant cable.
5. Slowly pull on the slider (the piece of aluminum that holds the element) while feeding the electric cable.
6. Be care full not to pull to hard on the cable.
7. Unscrew the two ceramic connectors at the back and separate the two wires that were connected by the connectors.
8. Remove the old element from the clips by pulling it "forward"
9. Remove your new element from it's box and cut and clean the wires to the same length is the old element.
10. Slowly and carefully insert the new element into the clips. **BE CARE FULL NOT TO TOUCH THE ELEMENT WITH YOUR BARE HANDS.** Use gloves / tissue paper if necessary. It helps to have someone bending the clips open to ease the inserting process.
11. Connect the new wires with the same ceramic connectors. Ensure that they "screw / cut" into the new wires for a secure connection.
12. Slide the lamp holder back into the body, secure the side plate with the 3 screws, tighten the cable and replace the grid.