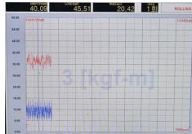


BRAND	NO INSERT	TANNUS	CUSH CORE	HUCK NORRIS	PEPI'S TIRE NOODLE
Product	—	Armour Tubeless	Cush Core Pro	Huck Norris	PTN 27.5" M
Size	—	27.5" x 2.1-2.6"	27.5" x 2.1-2.6"	27.5" x 2.25-2.6"	584 x (55~65)
Weight	—	150g	250g	76g	80g

Image



## Rolling Resistance



Rolling resistance, sometimes called rolling friction or rolling drag, is the force resisting the motion when a tire rolls on a surface.

**Lower rolling resistance is better.**

Photo	PSI	No Insert		Tannus		Cush Core		Huck Norris		Pepi's Tire Noodle	
		20km/h	30km/h	20km/h	30km/h	20km/h	30km/h	20km/h	30km/h	20km/h	30km/h
	40	29 w	48 w	<b>28 w</b>	<b>46 w</b>	27 w	45 w	28 w	47 w	28 w	47 w
	30	30 w	51 w	<b>29 w</b>	<b>49 w</b>	29 w	48 w	29 w	50 w	30 w	49 w
	20	39 w	57 w	<b>36 w</b>	<b>58 w</b>	36 w	59 w	37 w	60 w	37 w	59 w
	10	55 w	90 w	<b>53 w</b>	<b>87 w</b>	53 w	87 w	53 w	90 w	53 w	90 w

## Vibration

Shows the vibration value of tire delivered to the machine during rolling resistance test.

**The lower the test result, the smaller the vibration.**

Photo	PSI	No Insert		Tannus		Cush Core		Huck Norris		Pepi's Tire Noodle	
		20km/h	30km/h	20km/h	30km/h	20km/h	30km/h	20km/h	30km/h	20km/h	30km/h
	40	198 µm	244 µm	<b>107 µm</b>	<b>153 µm</b>	164 µm	247 µm	207 µm	215 µm	116 µm	187 µm
	30	119 µm	174 µm	<b>90 µm</b>	<b>127 µm</b>	154 µm	176 µm	111 µm	149 µm	101 µm	141 µm
	20	86 µm	97 µm	<b>81 µm</b>	<b>110 µm</b>	114 µm	153 µm	110 µm	130 µm	80 µm	113 µm
	10	40 µm	38 µm	<b>38 µm</b>	<b>55 µm</b>	42 µm	59 µm	16 µm	10 µm	38 µm	47 µm

## Rim Off

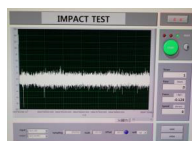


This test checks how much force (cornering and side impact) applied to the side of the tire when the insert is inserted.

**The higher the test result, the better.**

Photo	PSI	No Insert	Tannus	Cush Core	Huck Norris	Pepi's Tire Noodle
	30	67 kgf	<b>115 kgf</b>	114 kgf	82 kgf	95 kgf

## Shock Absorption



This test calculates the amount of impact the shock sensor receives at the bottom of the tester by dropping the impact weight at 1 meter height. By inserting the insert pieces on top of the sensor, you can see how much impact the insert absorbs.

**The lower the test result, the better the shock absorption.**

Photo	No Insert	Tannus	Cush Core	Huck Norris	Pepi's Tire Noodle
 Height: 1meter Weight: 5kg	278 kgf	<b>135 kgf</b>	131 kgf	248 kgf	227 kgf