

# LOOSE TEA

VERSUS

# TEA BAGS

## LOOSE TEA



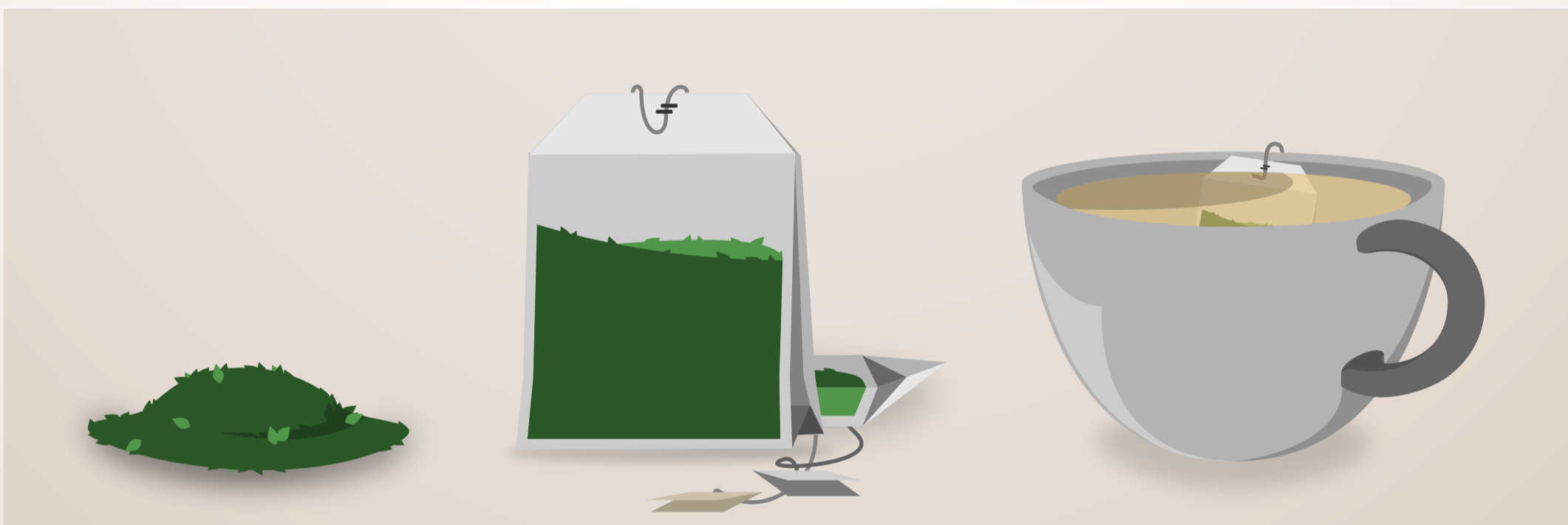
Loose tea is composed of whole or partial leaves that impart more flavor but take longer to steep.



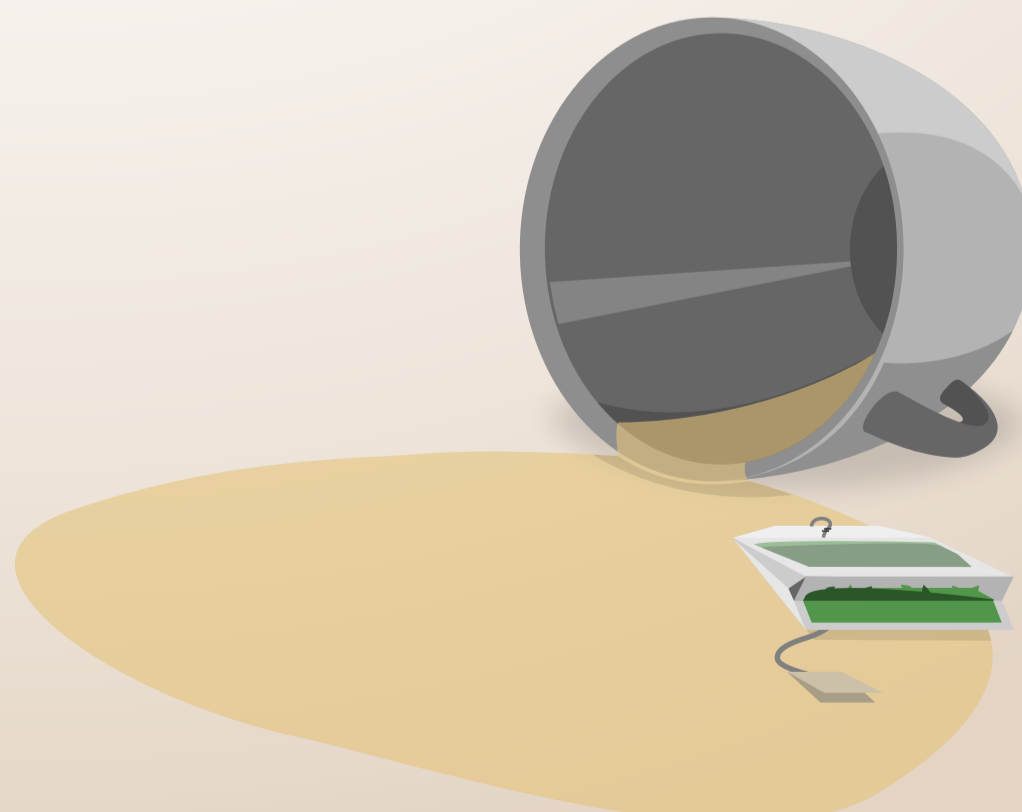
Loose tea can be re-steeped, or steeped more than one time, containing subtle and enjoyable flavors in each steeping.



## TEA BAGS



Tea bags are filled with “tea fannings” or tea dust that does not guarantee top quality though does steep faster.



Tea bags ensure a clean, non-gritty cup of tea every time.

