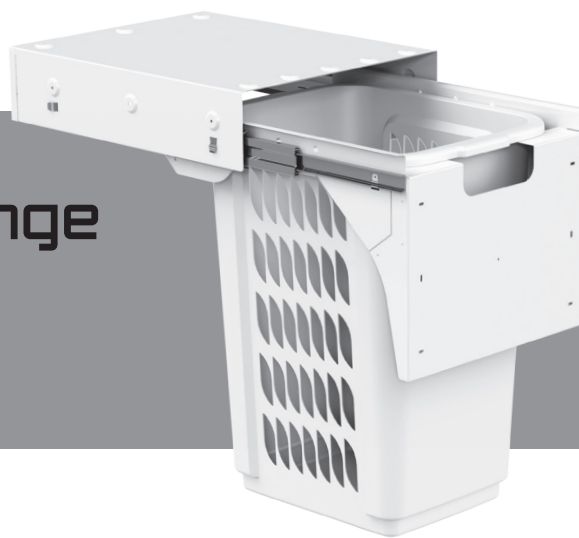


Hideaway® soft close range installation instructions 60L Laundry Hamper



PLEASE READ BEFORE YOU BEGIN

Important Installation Information:

AT ALL STAGES OF THE INSTALLATION ENSURE THE SPRING CARRIER ON THE RUNNER IS ENGAGED!

Before you close the unit ensure the spring carrier is loaded on your soft close runner. Failure to do so may cause damage to your runners.

Figure 1a - Demonstrates the spring carrier in the engaged position. This is the correct positioning and the laundry hamper is ready to be closed and used.

Figure 1b - Demonstrates the spring carrier in a disengaged position. To move into engaged position, move the white spring carrier along its runner until it clicks into location demonstrated by arrow in Fig 1b. Alternatively, if discovered after installation is complete then you may also try the following: push the drawer to the firmly closed position. Push the disengaged side of the door firmly until you hear a click from the runner re-engaging. The runner should now close fully under normal operation and be positioned as shown in Fig 1a.

Step 1 - Unpack Hideaway Bin

- Remove all polystyrene.
- Remove the hamper.

Step 2 - Remove the door bracket

- Remove door bracket from the brown box found inside the hamper and set aside until step 5.
- **NOTE: VERY IMPORTANT** - Do not remove the runners from the top mounting panel.
- See (fig 2) to identify unit parts.

Step 3 - Install your bin within your cupboard / carcass (top mounting)

- Position the top mounting panel inside, beneath your carcass / shelf.
- **NOTE: VERY IMPORTANT** - Set the top mounting panel back 2mm from front of carcass.
- Position in the centre of the carcass. Mounting holes are located in the top mounting panel for fixing. Secure the top mounting panel into place with the Surefix screws and washers provided. Any additional mounting holes added by the installer will null and void warranty.

Step 4 - Install your bin within your cupboard / carcass (side mounting)

- Your unit has side mounting dimples, as shown in fig 2 & 3. If side mounting, the internal space of the cabinet must be within the advertised width.
- The side mounting dimples are to be secured with the Surefix screws and washers provided.

Step 5 - Door bracket (fig 4, 5)

- Align the door bracket (fig 6) to the collar (fig 7) and lightly tighten in place using the nuts provided.
- **NOTE:** Lightly tighten nuts to allow fixing of door front. (Refer fig 4 & 5)

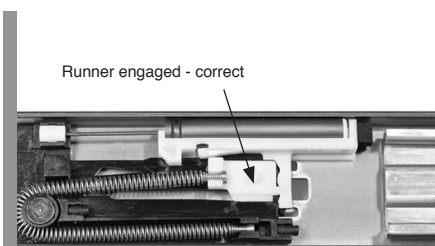


FIG 1a - Runner Engaged

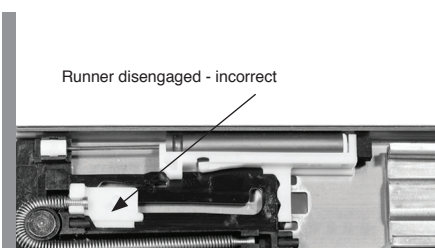


FIG 1b - Runner Disengaged

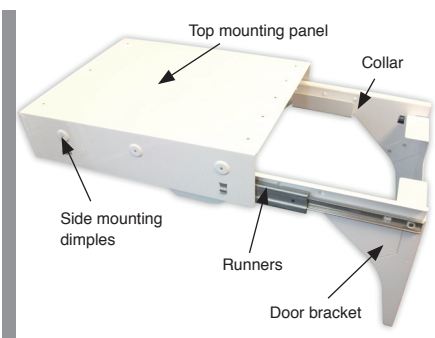


FIG 2 - Unit Parts

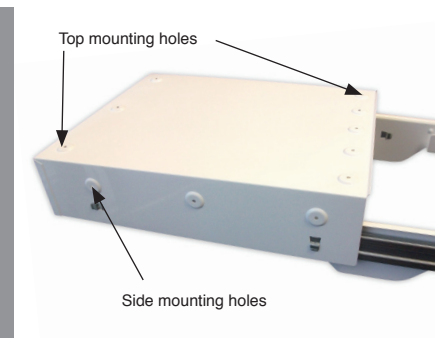


FIG 3 - Mounting

Step 6 - Fix cabinet fascia to door bracket of laundry hamper

- Place a 12mm self tapping screw into the centre hole of the door bracket - ensure the point of the screw is only protruding approx 3mm.
- With the laundry hamper closed fully, align the front fascia of the cupboard against the door bracket. A small hit with your hand to the location of the screw will help provide a drilling indication.
- Lie the cabinet fascia on a flat surface with the internal part of the door facing upwards. Using the drilling mark made to the centre point on the cabinet fascia, drill a guide hole to hold the centre screw. (If required for ease of installation, remove the door bracket from the unit once again. Attach the door bracket with the centre screw to the cabinet fascia using the drilling mark and then reattach the door bracket to the collar of the unit once again.)
- Place the cabinet fascia against the door bracket and tighten the centre screw. Check the positioning and align.
- Proceed to marking, screwing and tightening the remaining screws on the door bracket. Vertical and horizontal adjustment is provided on the door bracket.
- To adjust the angle of your kitchen fascia: loosen or tighten the nuts on the door bracket until desired angle is achieved. The centre nut provides pivot. Once the desired angle is achieved, firmly tighten all nuts on the door bracket.

Step 7 - Place hamper into hangers on collar

- Fully extend the runners.
- Place hamper onto the hangers provided on the collar.

Installation complete!

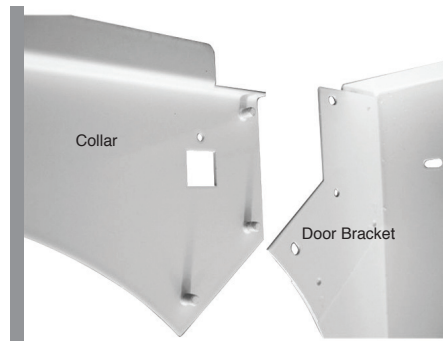


FIG 4 - Door Bracket and Collar Detached

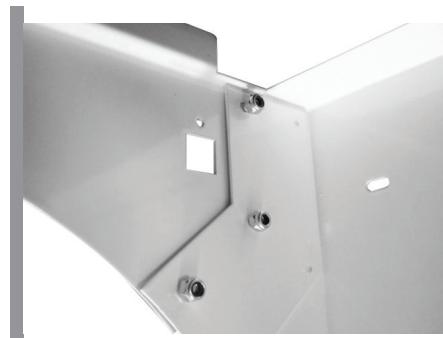


FIG 5 - Door Bracket and Collar Attached

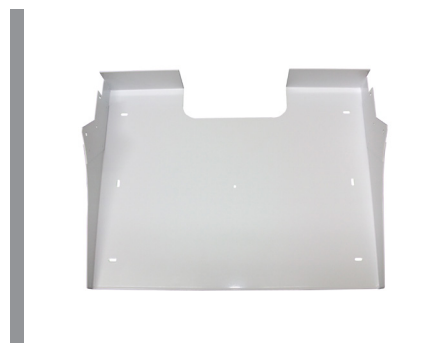


FIG 6 - Door Bracket

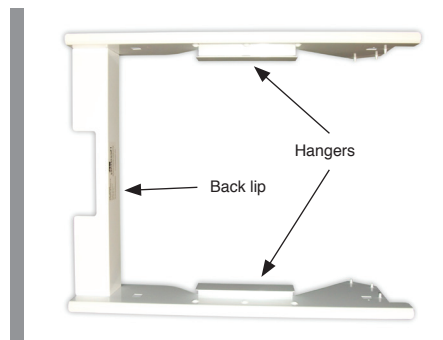


FIG 7 - Collar

Need more info?

NEW ZEALAND

Phone 09 426 7456

info@hideawaybins.co.nz

www.hideawaybins.co.nz

AUSTRALIA

Freephone 1800 042 642

info@hideawaybins.co.nz

www.hideawaybins.com.au

NZ Patent No. 585372

AUS Patent Application No. 2011100557