

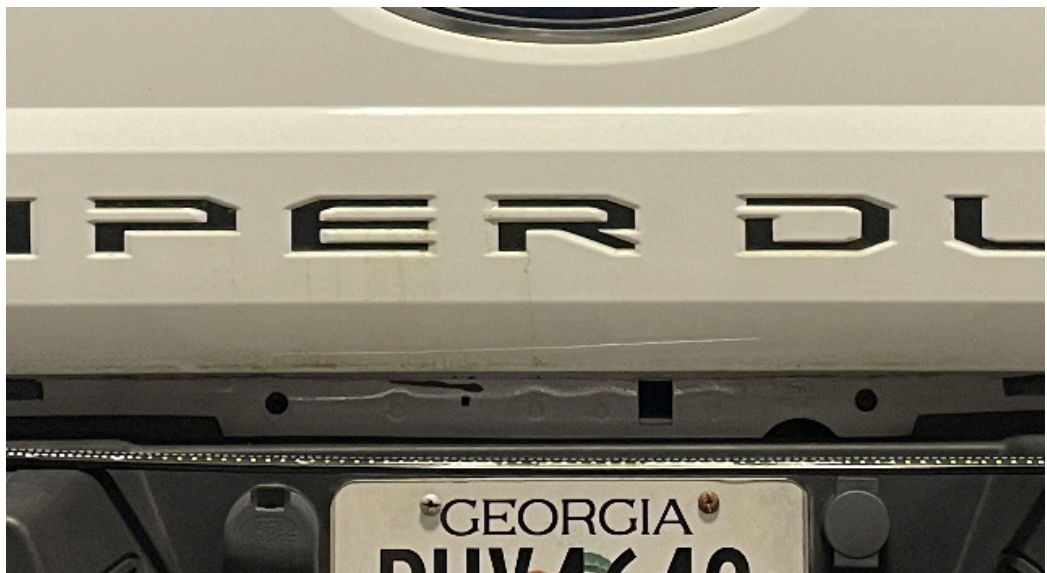


# TAILGATE BAR INSTALL

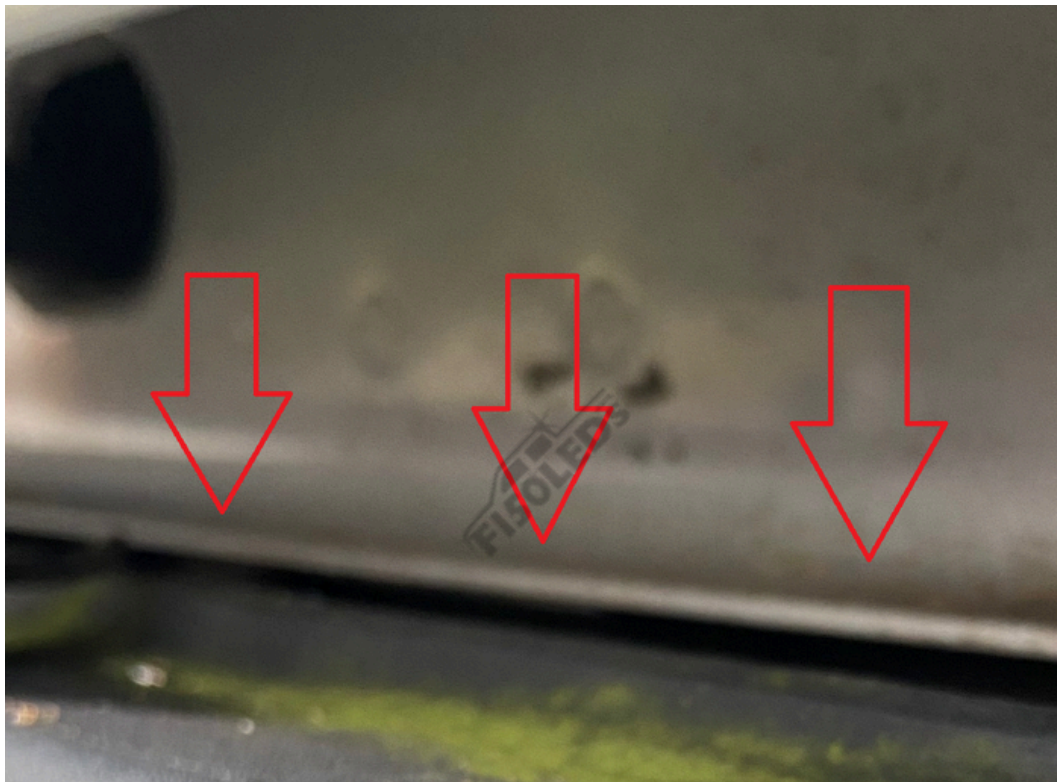
*Section A is for the drilling installation method, Section B is for the 3M installation method.*

## STEP 1

If your truck is a Super Duty, you will need to remove the bumper that is under the tailgate using a size T20 Torx Driver. If installing on an F-150 skip to step 2.

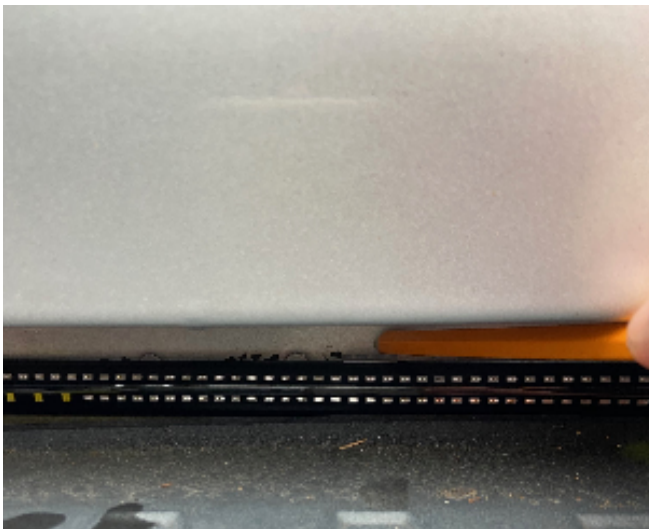


*We recommend resting the tailgate bar on the bottom lip seen in the photo below.*



## STEP 2a

Lay out the included clips then clip them onto the back of the tailgate bar, once they are attached hold the bar on the mounting location then use a pencil to mark the top of the clips.





## STEP 3a

Once all of the clips are marked, remove the clips from the tailgate bar then hold the clips on the mark then use a pencil or sharpie to mark a hole. (this mark will be drilled out)



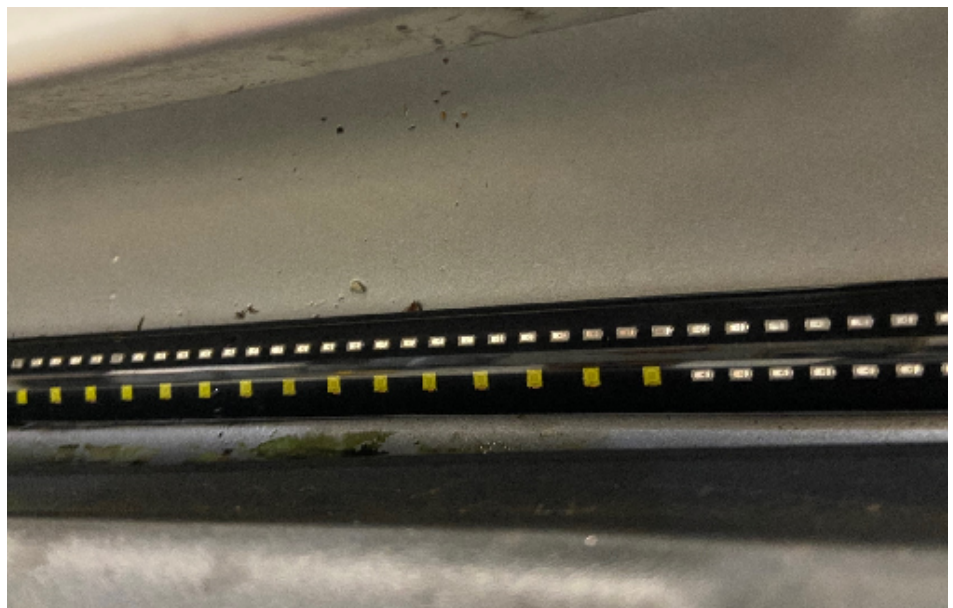
## STEP 4a

Use a size 1/8 drill bit to drill a pilot hole in the truck where the holes were marked.



## STEP 5a

Use the included screws to mount the clips to the truck then push the tailgate bar into the clips.



## STEP 6A

Use a size 8mm socket or wrench to remove both taillight assemblies.



## STEP 7A

Run the cluster of four wires coming from the tailgate bar to the drivers side taillight, then run the green wire at the end of the wiring under the bumper and up into the passengers side taillight.

***Please refer to the wiring guide section to see the color wires to connect to for your truck.***



## STEP 1B

Peel the protective covering off of the back of the included 3M and place it on the back of the tailgate bar.

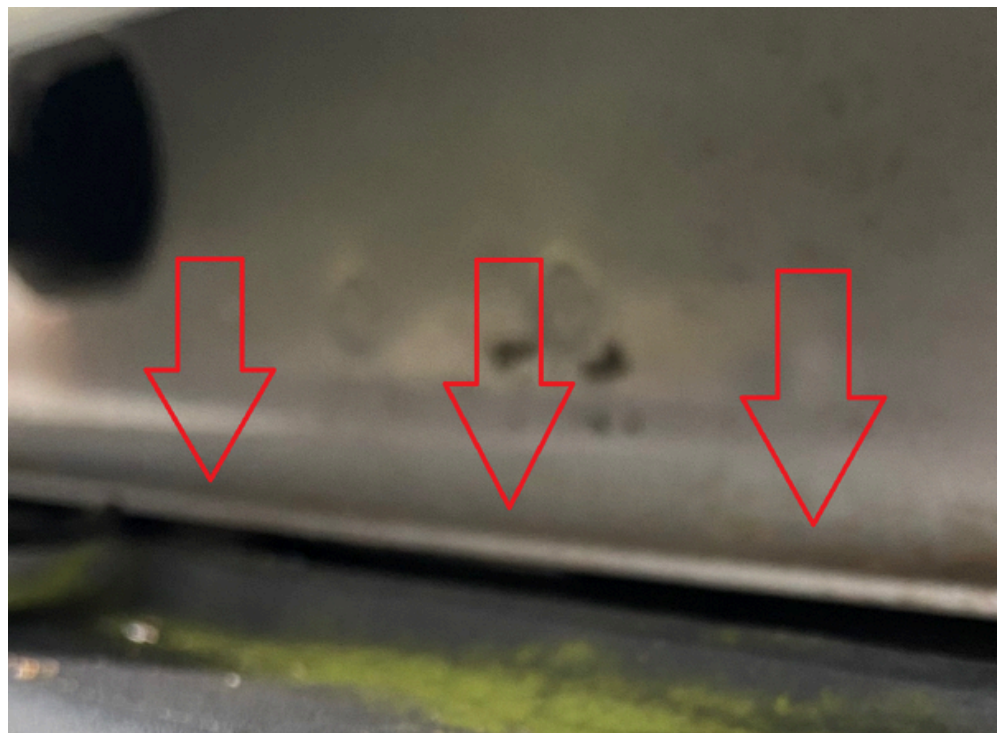


## STEP 2B

Remove the back of the 3M coverings and mount the tailgate bar onto the truck.



*We recommend resting the tailgate bar on the bottom lip seen in the photo below.*





## STEP 3B

Use a size 8mm socket or wrench to remove both taillight assemblies.



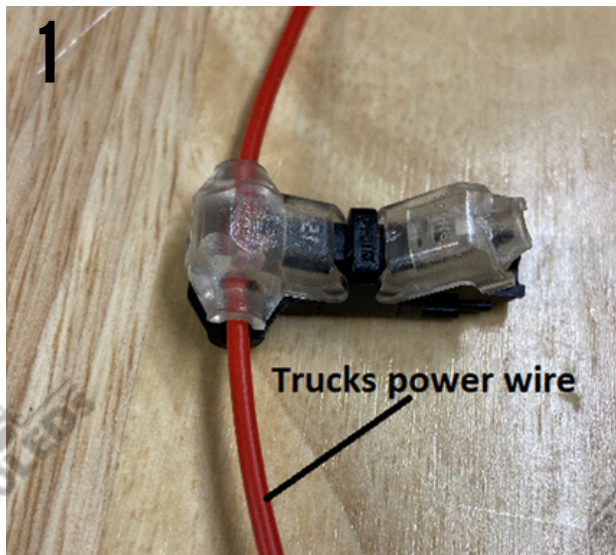
## STEP 4B

Run the cluster of four wires coming from the tailgate bar to the drivers side taillight, then run the green wire at the end of the wiring under the bumper and up into the passengers side taillight.

***Please refer to the wiring guide section to see the color wires to connect to for your truck.***

# How to use T-Clips:

**Step 1: slide the power wire from the truck through the opening in the image below, then use pliers and clamp the opening so the wire is securely connected**



**Step 2: Insert the power wire from the F150LEDS.com kit into the hole in the opening seen in the image then use pliers and clamp the opening so the wire is securely connected**



# Tailgate Bar Wiring:

*Below shows what each wire functions as that comes from our tailgate bar*

*Yellow Wire - Driver side turn signal*

*Brown Wire - Parking light*

*White Wire - Reverse Light*

*Black Wire - Ground*

*Green Wire - Passenger side turn signal*



Text for support: 706-214-2618

Visit our site to chat: [www.F150LEDs.com](http://www.F150LEDs.com)  
or email [CustomerSupport@F150LEDs.com](mailto:CustomerSupport@F150LEDs.com)



# Wiring Guide:

Yellow Wire- Driver side turn signal  
Brown Wire- Parking light  
White Wire- Reverse Light  
Black Wire- Ground  
Green Wire- Passenger side turn signal

## 2024+ F150 and Raptor

### Factory LED with Bliss

#### Driver Side:

- Driver Signal - (white/green)
- Ground - (black/yellow)
- Reverse - (green/brown)
- Running - (green/orange) \*can also use trailer harness
- \*Brake(requires tailgate bar adapter) - (white/red)

#### Passenger Side:

- Passenger signal - (green/orange)

### Halogen with Bliss

#### Driver Side:

- Driver Signal - Pin 1 (white/green)
- Ground - Pin 7 (black/yellow)
- Reverse - Pin 6 (green/brown)
- Running - Pin 3 in Trailer harness (brown wire)

#### Passenger Side:

- Passenger Signal - Pin 1 (grey/violet)

**(If the halogen wires do not match up with your trucks wiring please refer to the Factory LED with bliss section above)**

Yellow Wire-Driver side turn signal  
Brown Wire- Parking light  
White Wire- Reverse Light  
Black Wire- Ground  
Green Wire- Passenger side turn signal

## **2021 - 2023 F150 AND RAPTOR**

### **Factory halogen without BLISS**

#### **Driver side:**

- **Park Lamp – PIN2 (violet/green) or connect to the parking light wire in your trailer harness**
- **Driver signal – PIN3 (grey/orange)**
- **Reverse – PIN4 (green/brown)**
- **Ground – PIN6 (Black/yellow)**

#### **Passenger Side:**

- **Passenger Signal – PIN3 (green/orange)**

### **Halogen with BLISS**

#### **Driver side:**

- **Park Lamp – PIN2 (violet/green )or connect to the parking light wire in your trailer harness**
- **Driver signal – PIN3 (grey/orange)**
- **Reverse – PIN6 (grey/brown)**
- **Ground – PIN4 (Black/yellow)**

#### **Passenger Side:**

- **Passenger Signal – PIN3 (green/orange)**

### **Factory LED with BLISS**

#### **Driver side:**

- **Park Lamp – PIN10 (violet/green) or connect to the parking light wire in your trailer harness**
- **Driver signal – PIN1 (grey/orange)**
- **Reverse\*\*\* - PIN4 (green/brown)**
- **Ground – PIN3 (black/yellow)**

#### **Passenger Side:**

- **Passenger Signal – PIN1 (green/orange)**
- **\*Brake-Pin 2 (White/Green) (requires signal adapter)**

Yellow Wire- Driver side turn signal  
Brown Wire- Parking light  
White Wire- Reverse Light  
Black Wire- Ground  
Green Wire- Passenger side turn signal

## **2018-20 F150 & 2017+ RAPTOR**

### **Factory halogen without BLISS**

#### **Driver side:**

- **Park Lamp – PIN4 (blue/gray) or connect to the parking light wire in your trailer harness**
- **Driver signal – PIN1 (grey/orange)**
- **Reverse – PIN2 (green/brown)**
- **Ground – PIN6 (Black/yellow)**

#### **Passenger Side:**

- **Passenger Signal – PIN1 (green/orange)**

### **Factory LED without BLISS**

#### **Driver side:**

- **Park Lamp – PIN3 (blue/gray) or connect to the parking light wire in your trailer harness**
- **Driver signal – PIN6 (grey/orange)**
- **Reverse – PIN4 (green/brown)**
- **Ground – PIN1 (Black/yellow)**

#### **Passenger Side:**

- **Passenger Signal – PIN6 (green/orange)**

### **Factory LED with BLISS**

#### **Driver side:**

- **Park Lamp – PIN3 (blue/gray) or connect to the parking light wire in your trailer harness**
- **Driver signal – PIN2 (grey/orange)**
- **Reverse – PIN4 (green/brown)**
- **Ground – PIN1 (black/yellow)**

#### **Passenger Side:**

- **Passenger Signal – PIN2 (green/orange)**



Yellow Wire- Driver side turn signal  
Brown Wire- Parking light  
White Wire- Reverse Light  
Black Wire- Ground  
Green Wire- Passenger side turn signal

## **2015-17 F150**

### **Factory halogen without BLISS AND Factory LED without BLISS**

#### **Driver side:**

- **Park Lamp – PIN3 (blue/gray) or connect to the parking light wire in your trailer harness**
- **Driver signal – PIN6 (grey/orange)**
- **Reverse – PIN4 (green/brown)**
- **Ground – PIN1 (Black/yellow)**

#### **Passenger Side:**

- **Passenger Signal – PIN6 (green/orange)**

### **Factory LED with BLISS**

#### **Driver side:**

- **Park Lamp – PIN3 (blue/gray) or connect to the parking light wire in your trailer harness**
- **Driver signal – PIN2 (grey/brown)\***
- **Reverse – PIN4 (green/brown)**
- **Ground – PIN1 (black/yellow)**

#### **Passenger Side:**

- **Passenger Signal – PIN2 (violet/orange)\***

Yellow Wire- Driver side turn signal

Brown Wire- Parking light

White Wire- Reverse Light

Black Wire- Ground

Green Wire- Passenger side turn signal

## **2009-14 F150**

### **Factory halogen**

#### **Driver side:**

- **Park Lamp** – connect to middle wire of taillight bulb connector or connect to the parking light wire in your trailer harness
- **Driver signal** – connect to outside non-black wire of tail light bulb connector
- **Reverse** – connect to non-black wire of reverse bulb connector
- **Ground** – connect to black wire on either the turn signal or reverse bulb connector

#### **Passenger Side:**

- **Passenger Signal** – connect to outside non-black wire of tail light bulb connector

## **2004-08 F150**

### **Factory halogen**

#### **Driver side:**

- **Park Lamp** – connect to middle wire of taillight bulb connector or connect to the parking light wire in your trailer harness
- **Driver signal** – connect to outside non-black wire of tail light bulb connector
- **Reverse** – connect to non-black wire of reverse bulb connector
- **Ground** – connect to black wire on either the turn signal or reverse bulb connector

#### **Passenger Side:**

- **Passenger Signal** – connect to outside non-black wire of tail light bulb connector

Yellow Wire- Driver side turn signal  
Brown Wire- Parking light  
White Wire- Reverse Light  
Black Wire- Ground  
Green Wire- Passenger side turn signal

## 2023+ SUPER DUTY

### Factory Halogen

#### Driver side:

- **Park Lamp – PIN2 (blue/white) or connect to the parking light wire in your trailer harness**
- **Driver signal – PIN3 (green/white)**
- **Reverse – connect to reverse bulb (non-black wire)**
- **Ground – PIN1 (black/white)**

#### Passenger Side:

- **Passenger Signal – PIN3 (yellow/violet)**

### Factory Halogen tail lights with BLISS

#### Driver side:

- **Driver Signal - PIN3 Green wire with white stripe (on bottom connector)**
- **Parking Light - PIN2 Blue wire with white stripe (on bottom connector)**
- **Reverse Light - PIN3 Green wire with white stripe (on middle connector)**
- **Ground - PIN 1 Black wire with white stripe (on bottom connector)**

#### Passenger Side:

- **Passenger Signal – PIN3 Yellow wire with violet stripe (on bottom connector)**

### Factory LED tail lights with BLISS

#### Driver side:

- **Park Lamp – PIN10 (blue/brown) or connect to the parking light wire in your trailer harness**
- **\*Brake- PIN2 (White/Green)(requires signal adapter)**
- **Driver signal – PIN1 (gray)**
- **Reverse- PIN4 (green)**
- **Ground – PIN3 (black/green)**

#### Passenger Side:

- **Passenger Signal – PIN1 (green)**



Yellow Wire- Driver side turn signal  
Brown Wire- Parking light  
White Wire- Reverse Light  
Black Wire- Ground  
Green Wire- Passenger side turn signal

## 2020-22 SUPER DUTY

### Factory halogen without BLISS

#### Driver side:

- **Park Lamp** – connect to middle wire of taillight bulb connector or connect to the parking light wire in your trailer harness
- **Driver signal** – connect to outside non-black wire of tail light bulb connector
- **Reverse** – connect to non-black wire of reverse bulb connector
- **Ground** – connect to black wire on either the turn signal or reverse bulb connector

#### Passenger Side:

- **Passenger Signal** – connect to outside non-black wire of tail light bulb connector

### Factory LED with BLISS

#### Driver side:

- **Park Lamp** – PIN3 (blue/gray) or connect to the parking light wire in your trailer harness
- **Driver signal** – PIN10 (green/blue)
- **Reverse**- PIN4 (green/brown)
- **Ground** – PIN8 (blue/green)

#### Passenger Side:

- **Passenger Signal** – PIN10 (blue/orange)
- **\*Brake-Pin 2 (White/Green) (requires signal adapter)**

Yellow Wire- Driver side turn signal

Brown Wire- Parking light

White Wire- Reverse Light

Black Wire- Ground

Green Wire- Passenger side turn signal

## **2017 - 2019 SUPER DUTY**

### **Factory halogen without BLISS**

#### **Driver side:**

- **Park Lamp** - connect to middle wire of taillight bulb connector or connect to the parking light wire in your trailer harness
- **Driver signal** - connect to outside non-black wire of tail light bulb connector
- **Reverse** - connect to non-black wire of reverse bulb connector
- **Ground** - connect to black wire on either the turn signal or reverse bulb connector

#### **Passenger Side:**

- **Passenger Signal** - connect to outside non-black wire of tail light bulb connector
- 

### **Factory LED with BLISS**

#### **Driver side:**

- **Park Lamp** - PIN3 (blue/gray) or connect to the parking light wire in your trailer harness
- **Driver signal** - PIN2 (grey/brown)
- **Reverse**- PIN4 (green/brown)
- **Ground** - PIN8 (blue/green)

#### **Passenger Side:**

- **Passenger Signal** - PIN2 (violet/orange)

Yellow Wire- Driver side turn signal

Brown Wire- Parking light

White Wire- Reverse Light

Black Wire- Ground

Green Wire- Passenger side turn signal

## 1999-16 SUPER DUTY

### Factory halogen

#### Driver side:

- **Park Lamp** – connect to middle wire of taillight bulb connector or connect to the parking light wire in your trailer harness
- **Driver signal** – connect to outside non-black wire of tail light bulb connector
- **Reverse** – connect to non-black wire of reverse bulb connector
- **Ground** – connect to black wire on either the turn signal or reverse bulb connector

#### Passenger Side:

- **Passenger Signal** – connect to outside non-black wire of tail light bulb connector