

2019 - 2022 RANGER LOWER INTAKE BAR

STEP 1

Attach your bracket to your bar as seen in the photo below.



STEP 2

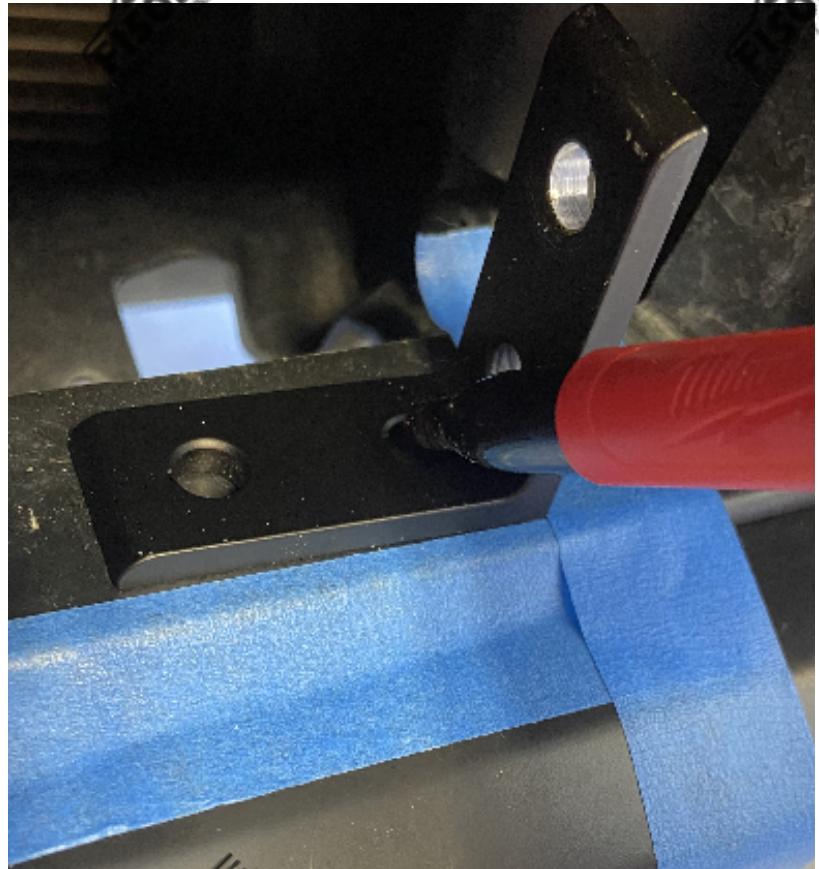
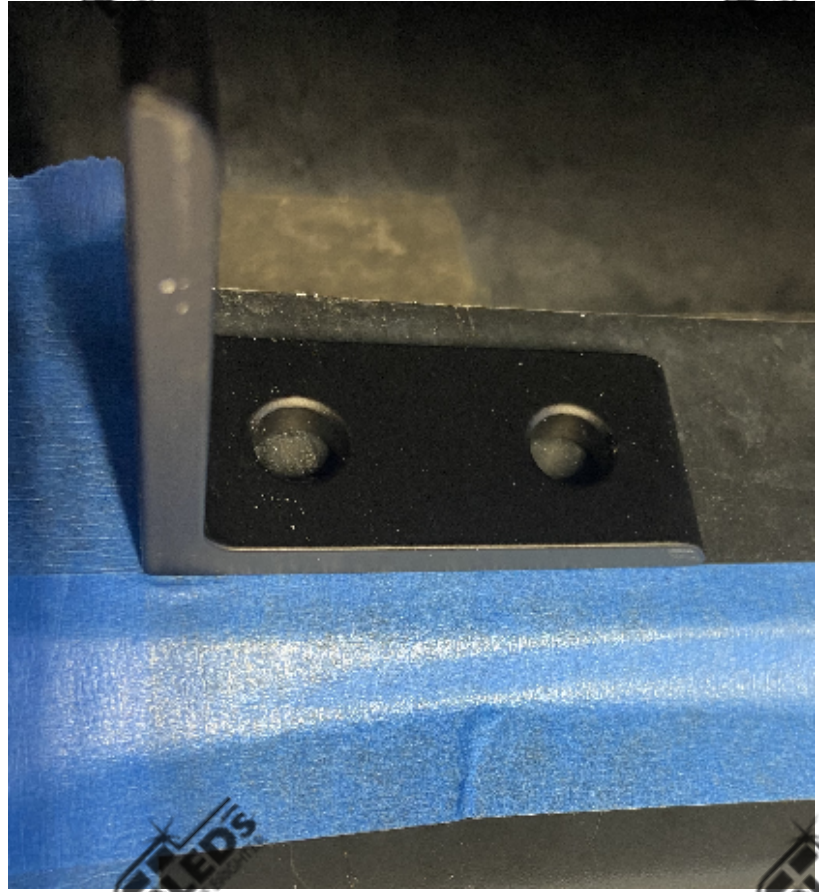
Line up your bar in the lower intake area and make sure it is centered, also when you line up your bar be sure that there is nothing under the mounting surface that will prevent a hole to be drilled.

Once your bar is lined up use two pieces of electrical tape or painters' tape to mark where your bracket is in the lower intake area as seen below.



STEP 3

Once you have marked where your bracket needs to be, remove the bracket from your bar and use a sharpie to mark the inside hole of your bracket.





STEP 4

Once you have marked your hole. Use a $\frac{1}{4}$ or $\frac{5}{16}$ size drill bit to drill a mounting hole into your bumper. The mounting surface is pliable so it does help to pull it forward so it is easier to drill straight through the mounting surface.





STEP 5

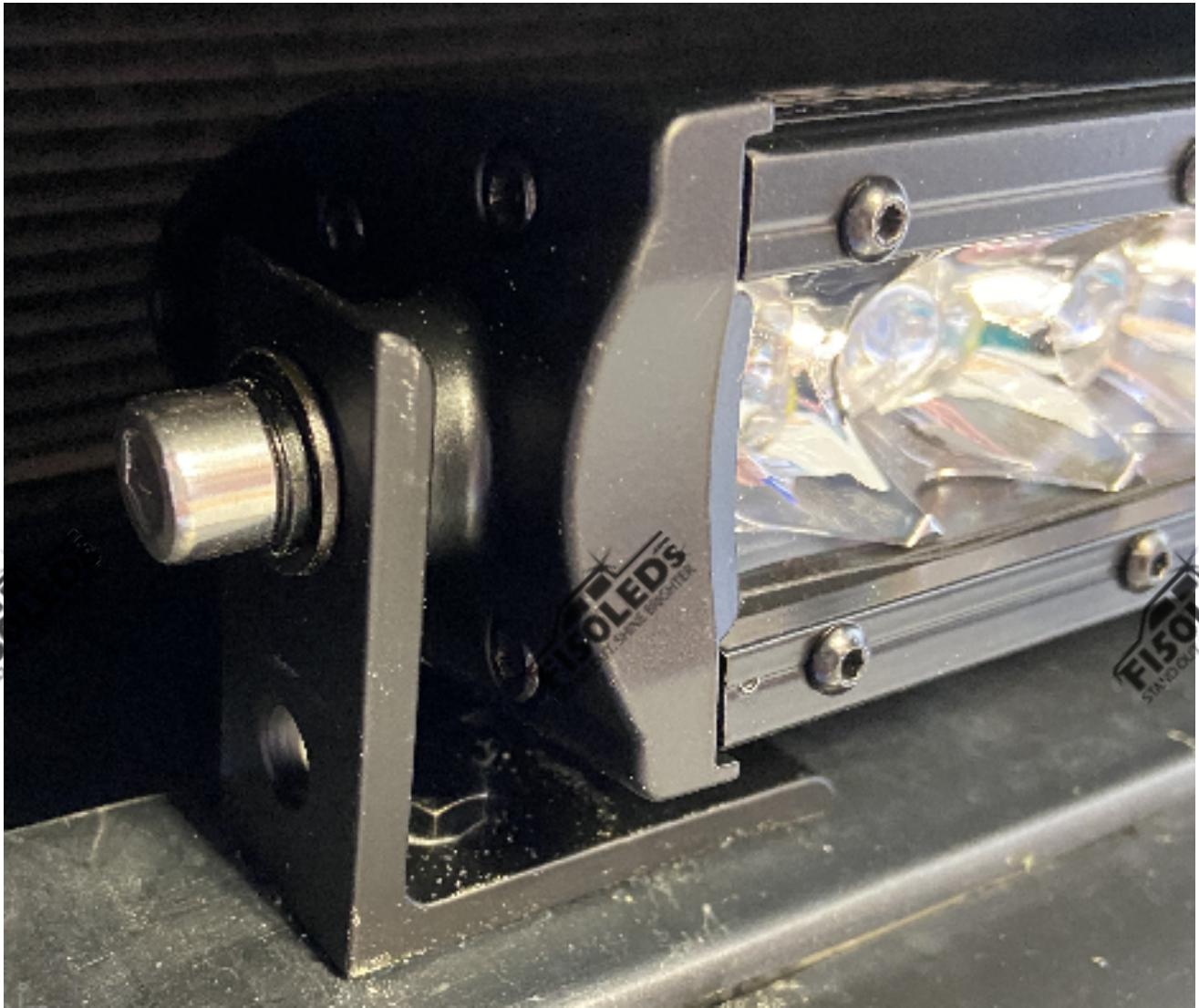
Using the included hardware mount your bracket to the mounting surface.



Reach under the mounting surface to screw the nut to your bolt.

STEP 6

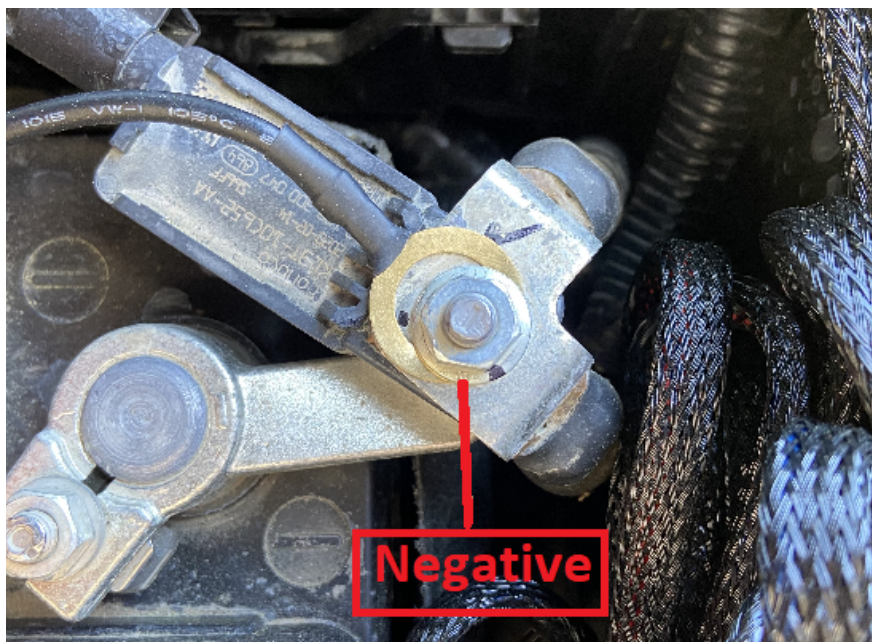
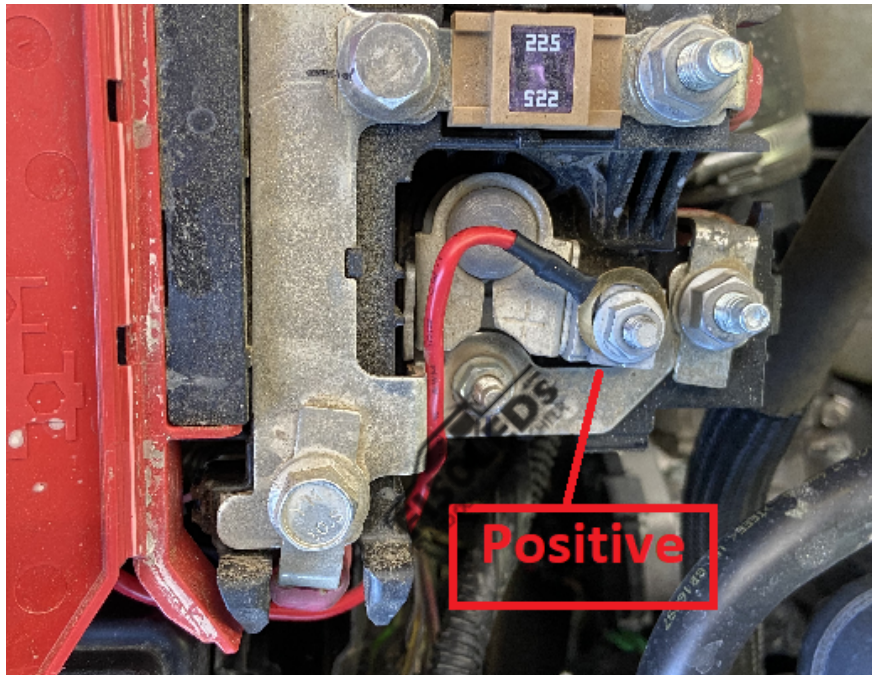
Once you have mounted both brackets to the mounting location, use the included hardware to attach your bar to your brackets.



STEP 7

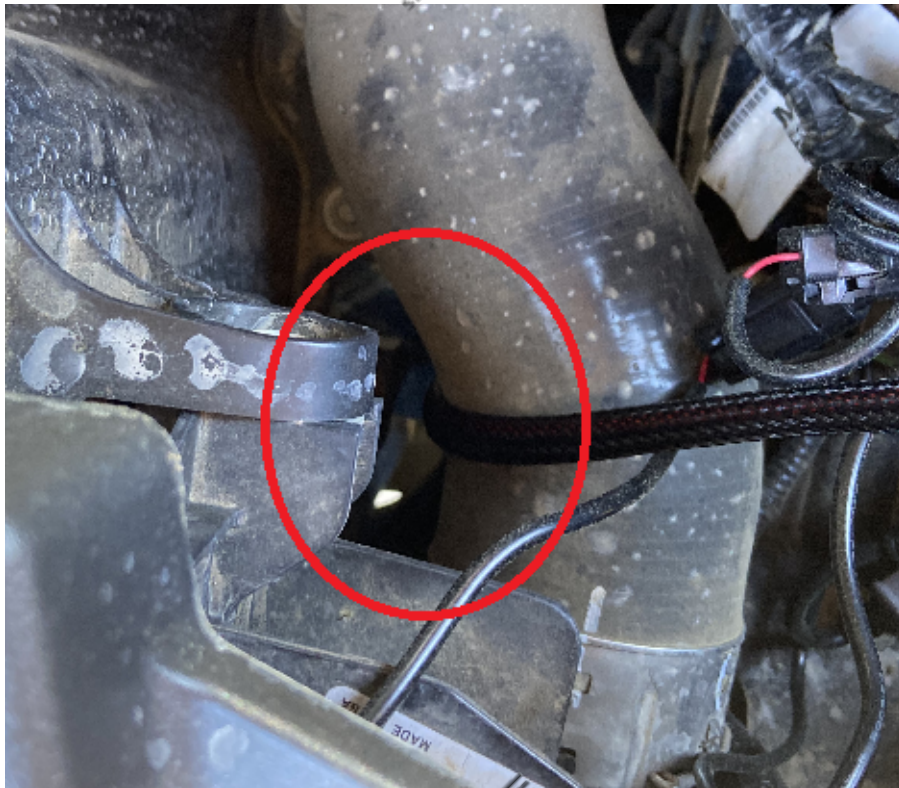
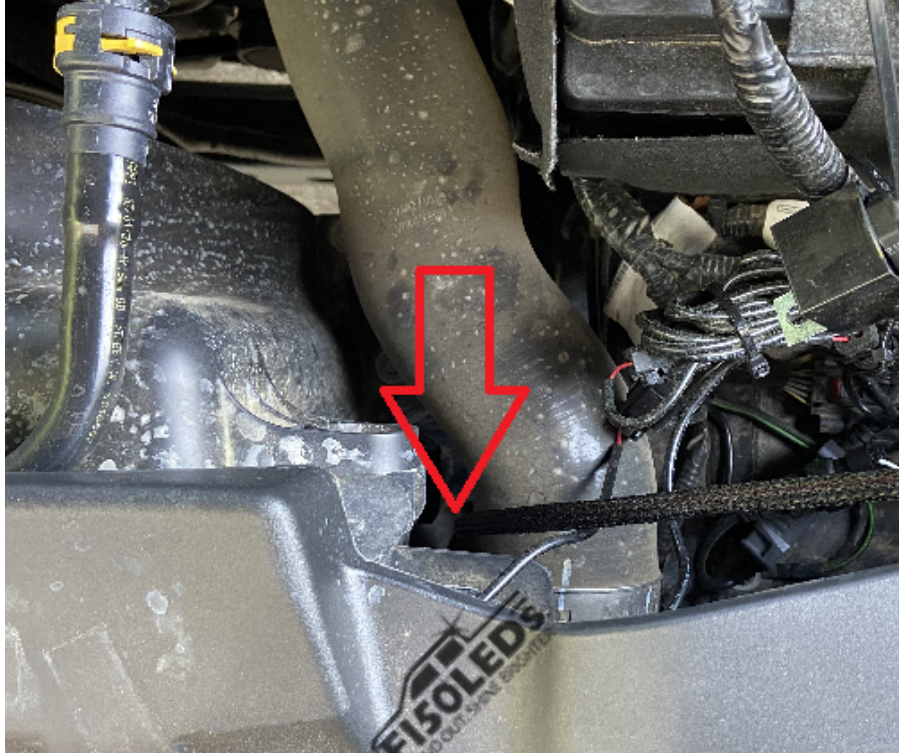
Connect your wiring harness to your battery.

Remove the nut on the positive terminal of your battery and slide the red positive terminal ring over the bolt then tighten the nut back into place. Remove the nut on the negative terminal of your battery and slide the black negative terminal ring over the bolt then tighten the nut back into place.



STEP 8

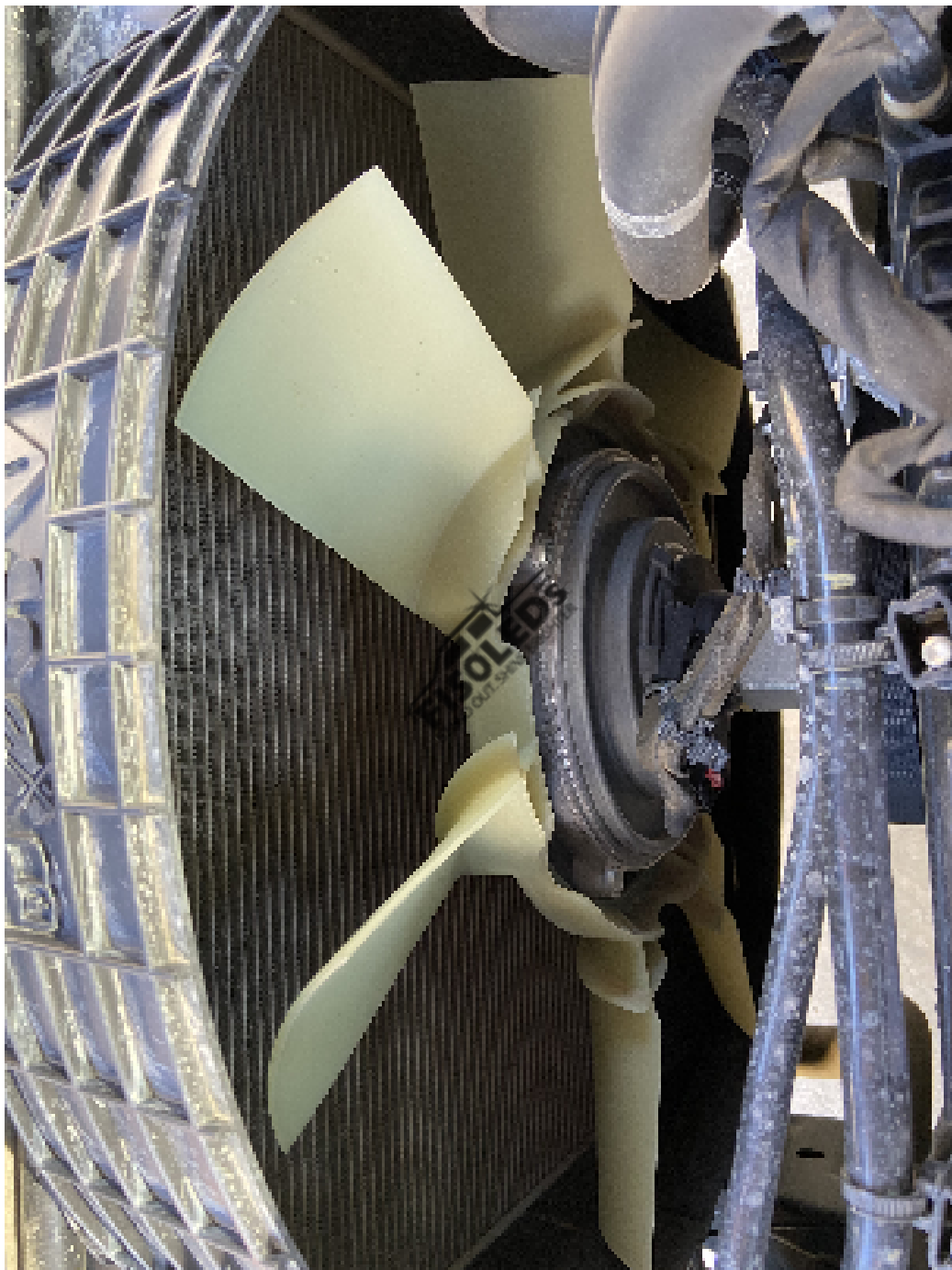
Run the connector from the harness down through the engine bay area until it is seen under the bumper as seen in the photos below.





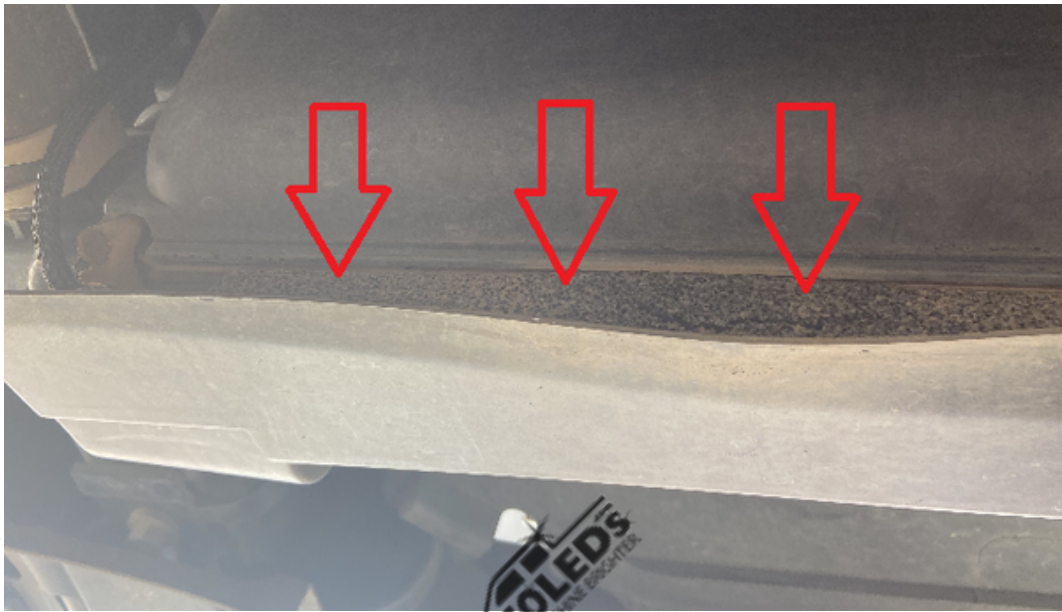


**Be sure that the wiring harness is zip tied in the engine bay so that the wiring harness does not get caught in the fan behind the grille that is seen in the photo below. **



STEP 9

Connect the wiring harness to the connection coming from the light bar.
To do so pull down on the plastic piece under the front end of the truck
and that will give you access to the lower intake area to make the
connection to the bar.



Once the connection has been made place the connection back into the lower intake area as seen below.



STEP 10

Disconnect the white connector that is connecting the switch to the wiring harness.



Then take the switch into the cab of the truck, at the driver's footwell there is a grommet that leads into the engine bay area, using a large flat head screwdriver or pry tool pry this open enough to slide the white connector through the grommet until it is seen coming through in the engine bay.

We recommend two people perform step two so that one person feeds it from the cab and the other person can grab the connector in the engine bay using needle nose pliers



The grommet is located behind the piece circled below, once the connector is fed through reconnect the wiring harness to the switch.



STEP 11

Run the switch under the steering column then mount the switch on the dash in your preferred location. Be sure the surface where the switch is going to be mounted is clean to ensure good adhesion.





Text for support: 706-214-2618
Visit our site to chat: www.F150LEDs.com
or email CustomerSupport@F150LEDs.com

