

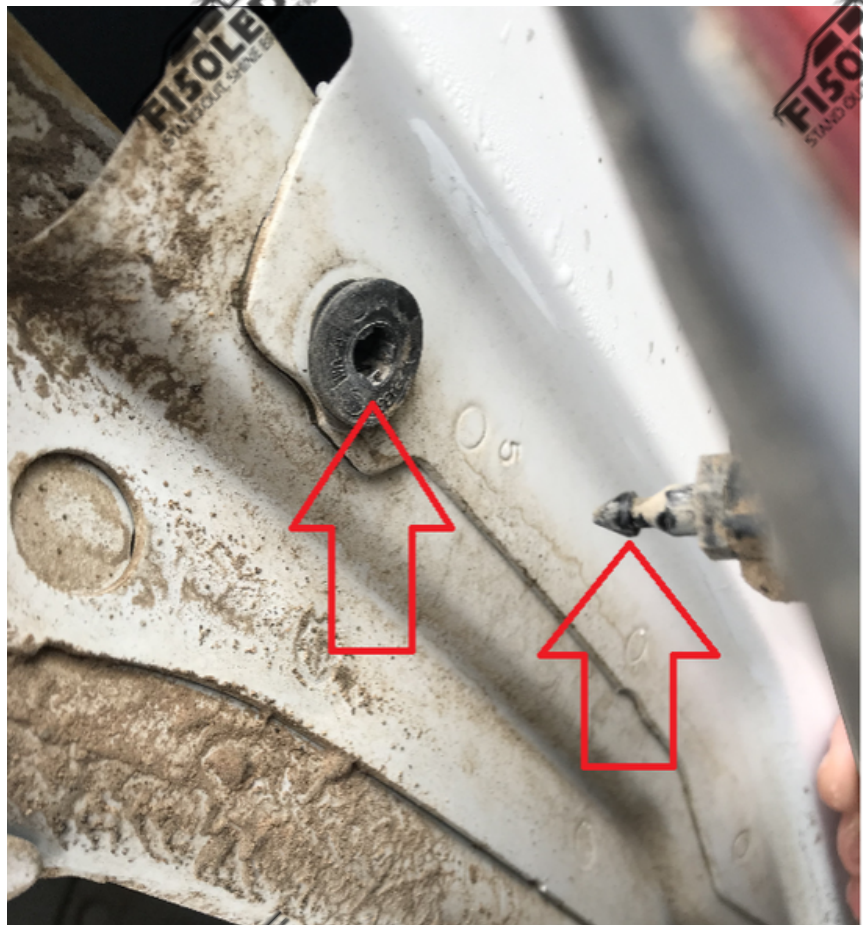
F250 2017+ TAILLIGHT INSTALLATION GUIDE

STEP 1

Be sure that there is no power going to your taillights.

Remove two size 8mm bolts.

There are two tabs located at the top and bottom of the side of your housing. Pull away from the truck with moderate to release these tabs



STEP 2

Remove your
Taillight socket
from the housing
using a
counterclockwise
turn



STEP 3

Carefully remove
the OEM glass bulb
by pulling away
from the base of the
bulb.

**Make sure this bulb
is not hot when
removing the bulb**

STEP 4

Insert your F150LEDS.com
Taillight bulb.

Test your bulb, if the bulb
does not light then remove
the bulb and rotate it 180
degrees.

**It is ok to experience hyper-
flashing at this point as we
are just testing to make sure
that the bulb lights up. **



STEP 5

Reinsert the bulb back into the housing
using a clockwise turn to lock it into place.



STEP 6

Use your provided screws to mount the included resistors to the metal surface behind the housing.

You may need to drill a pilot hole using a 3/16 size drill bit so that the screws will mount easier.

*As you are about to drill your hole make sure you are not about to drill into your bed area. *



STEP 7

Using the provided splice connectors, splice each wire from one resistor to the two outside wires of your top taillight bulb.

Splice the other resistor wire to the two outside wires to your bottom taillight bulb.

Reinstall your taillight assembly.

