

# F250/F350 SUPER DUTY REVERSE LIGHTS INSTALLATION.

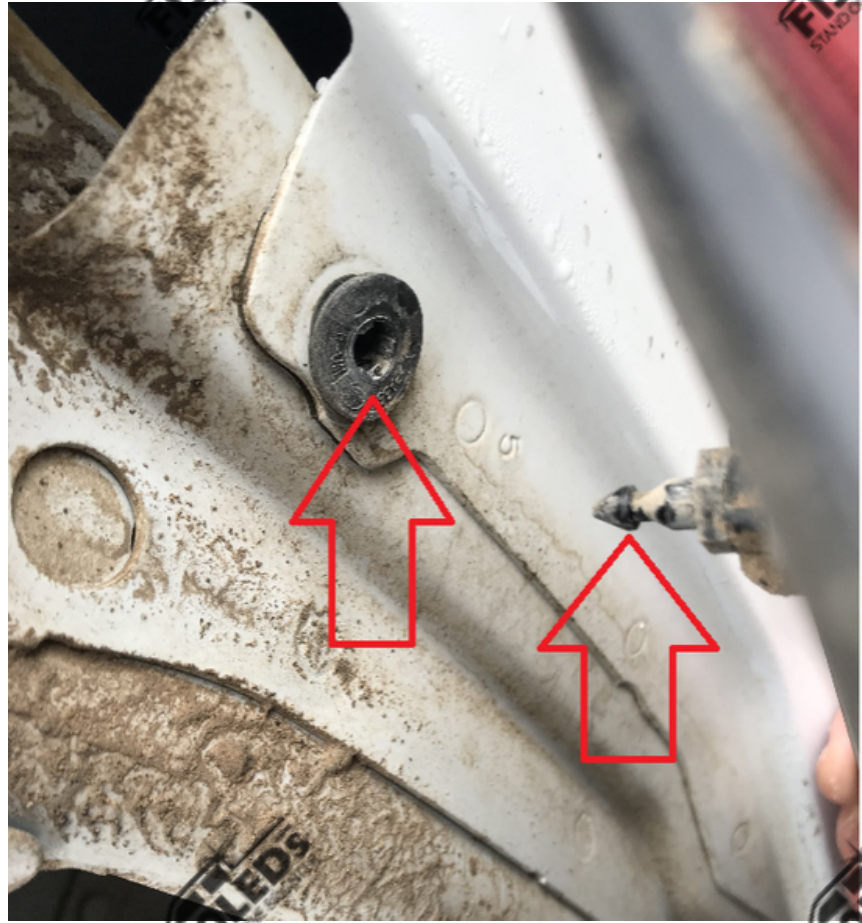
## STEP 1

Be sure that there is no power going to your Reverse lights.  
Remove two size 8mm bolts from your truck.



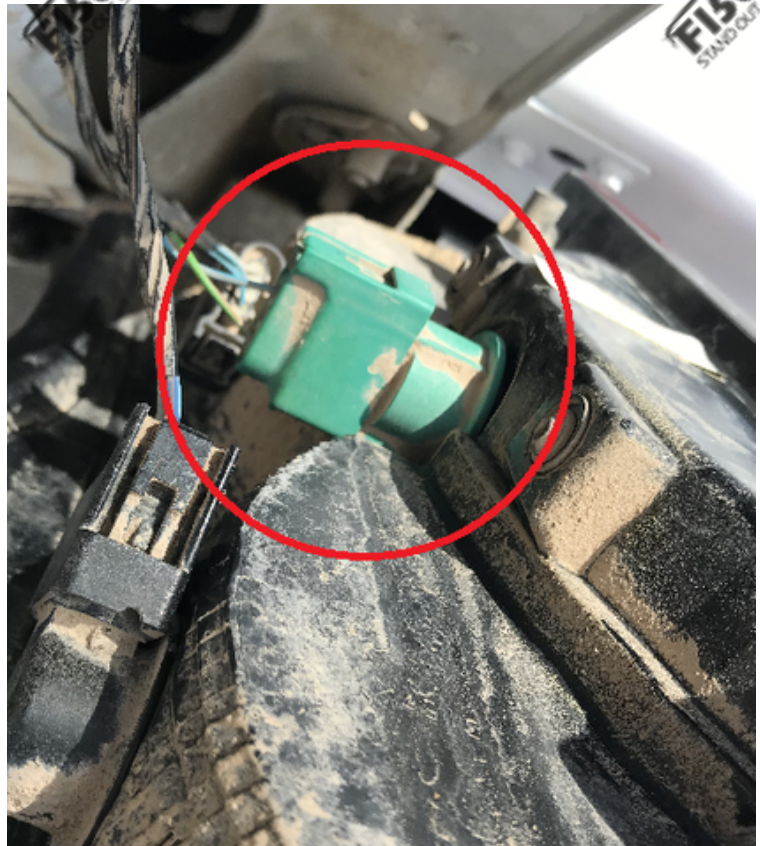
There are two tabs located at the top and bottom of the side of your housing.

Pull away from the side of your truck with moderate force to release these tabs



## STEP 2

Remove your Reverse light socket from the housing using a clockwise turn





# STEP 3

Carefully remove the OEM glass bulb by pulling away from the base of the bulb.

*\*Make sure this bulb is not hot when removing the bulb\**



# STEP 4

Insert your F150LEDs.com Reverse bulb.

**Test your bulb**, if the bulb does not light then remove the bulb and rotate it 180 degrees.

# STEP 5

Reinsert the bulb back into the housing using a clockwise turn to lock it into place then reinstall your tail light assembly.

To see the complete installation watch our video at [www.F150LEDs.com](http://www.F150LEDs.com)!



Text for support: 706-214-2618

Visit our site to chat [www.F150LEDs.com](http://www.F150LEDs.com)  
or email [CustomerSupport@F150LEDs.com](mailto:CustomerSupport@F150LEDs.com)

