

19+ Ranger Door Sill Kit

Step 1

Open your kit and lay out all four plates like shown below. The two longer plates will be for the front doors, and the two shorter plates will be for the back doors. The plates with the longer wires will be for the passenger side of the truck.



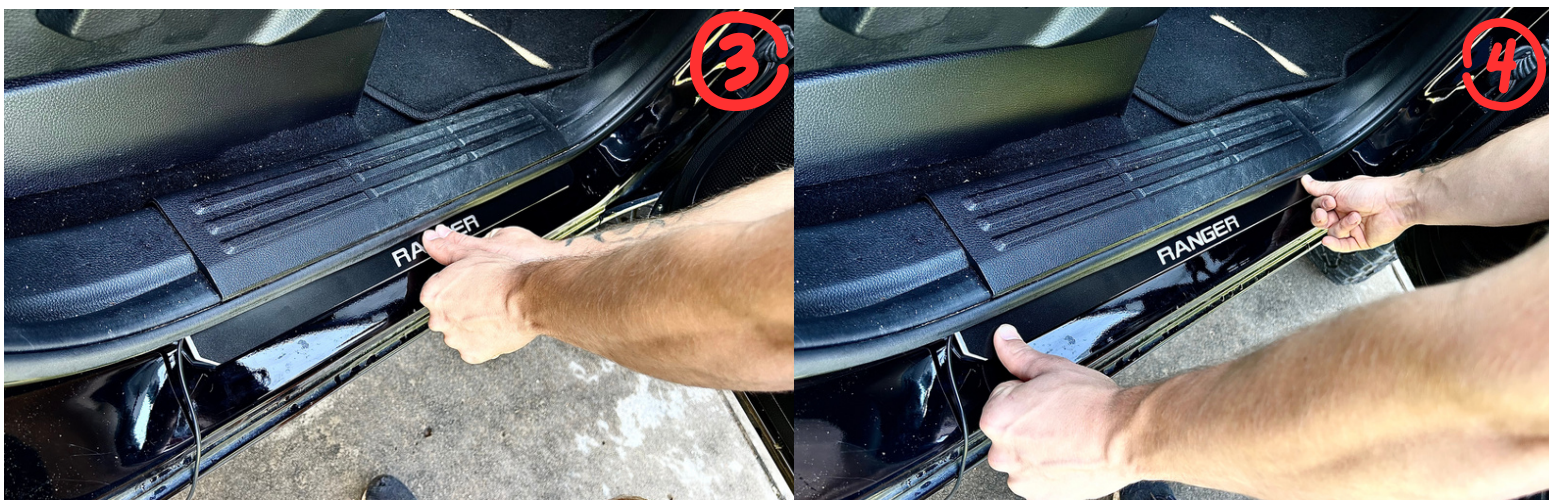
***We recommend you go ahead and fold up the seats in the back of your truck for installation purposes.**

Step 2

Starting on the passenger side front door, use the included prep wipes to clean off the mounting surface right under the plastic trim cover. Then you will need to grab the longer door sill plate that has the longer wire and remove the 3M tape like shown below.



Once the 3M tape has been removed, line up the door sill plate with the plastic trim cover and mount the plate to the truck.



***Press firmly from the middle to the ends of the plate.**

Step 3

Remove the plastic trim cover by prying one side of the cover off and gently lifting. You will then need to pull up on the rubber seal so that you can pass the wire from the door sill plate into the truck.



****We found it easy to gently pop this plastic piece up to slide the wire under and through to the back seat.**



Once you have the wire through, unfold the rest and go ahead and run the wire along side the drivers side seat and into the back. Then come back and pop the plastic trim back into place. From there, you will need to hide the exposed wires leading to the back seat.



****We used a flat head screwdriver to gently wedge the wire behind the plastic trim in order to make it easier to hide the wires.**

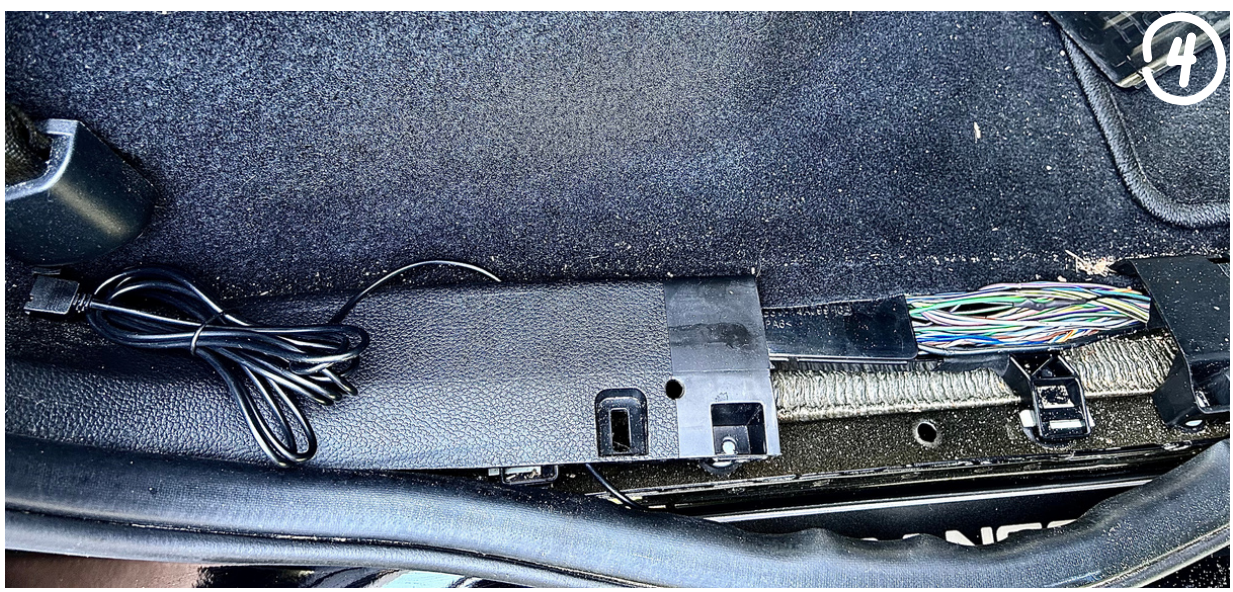
Step 4

With the smaller plate that has the longer wire, you are going to do the same process you just did with the bigger plate.



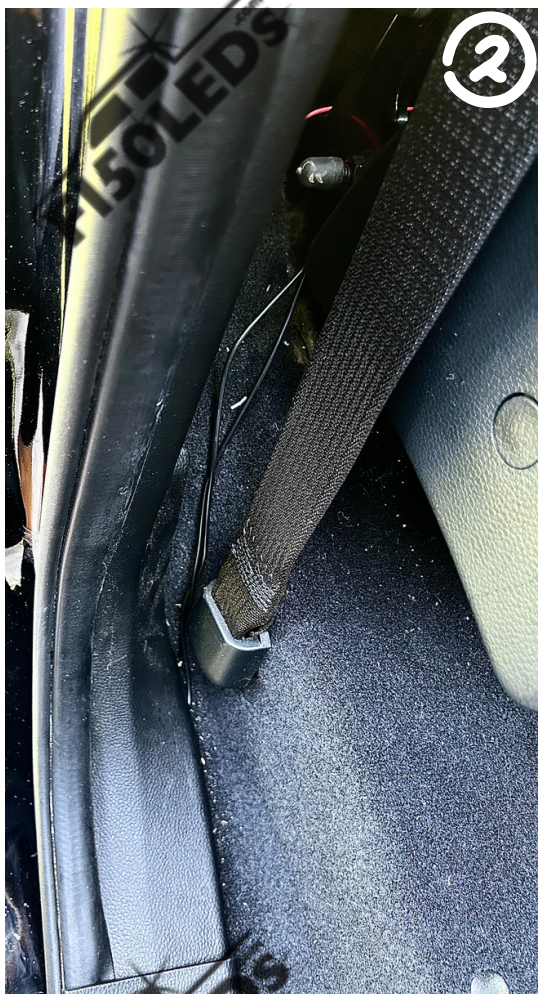
***Press firmly from the middle to the ends of the plate.**

Once you get the plate mounted, begin to take the plastic trim cover off along with the rubber seal. Run the wire from the door sill plate into the truck and place the rubber seal back over the wire.





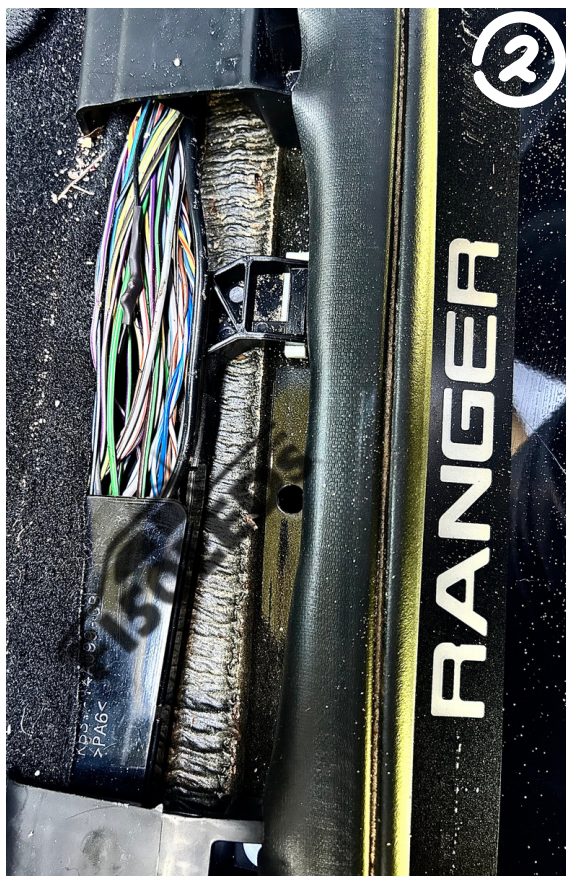
We continue to hide our wires all the way down to behind the back seat. At the bottom, we located a small hole that we were able to run our two wires through.





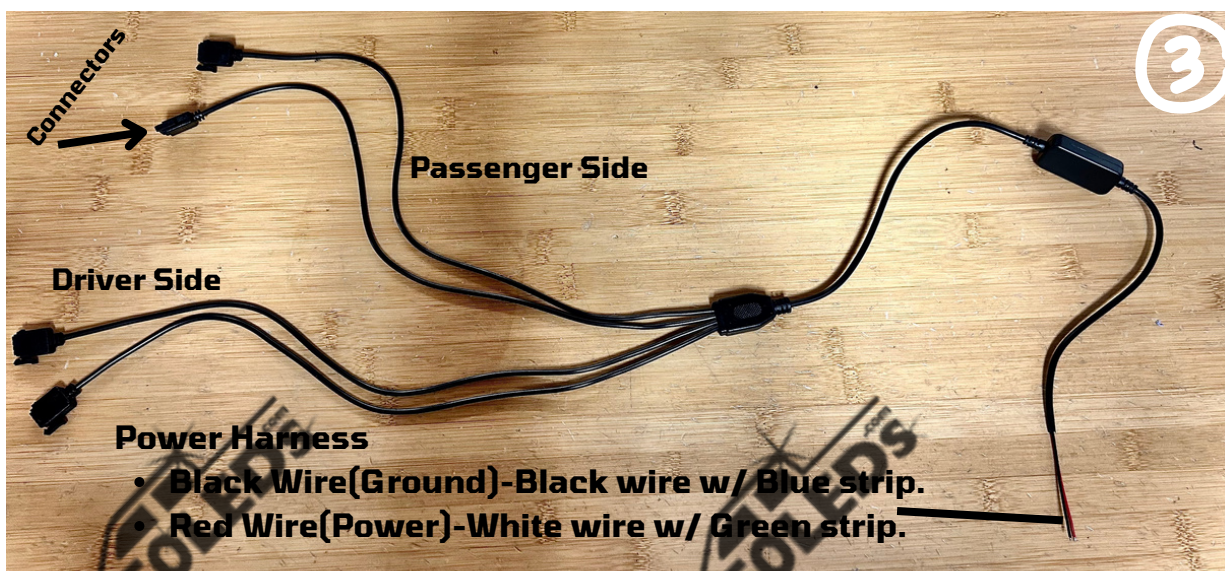
Run the wires all the way to the rear driver side. As long as you keep them tucked as far back under the seat as you can, they will not be seen once you fold your seats back down. Once you reach the drivers side, go ahead and connect them to the powering harness.





With the rear driving side plastic trim cover removed, you will need to gain access to the wires that will power the door sill kit. Use the powering harness and splice connectors included with the kit to power your door sills. Locate a **WHITE** wire with a **GREEN** strip for power and a **BLACK** wire with a **BLUE** strip for ground.

****There may be tape covering these wires. If so, take a box cutter and carefully expose these wires.**





FISOLEDs
4000

FISOLEDs
4000

FISOLEDs
4000

FISOLEDs
4000

FISOLEDs
4000

FISOLEDs
4000