

# BRONCO 270W ROOF-MOUNTED BAR INSTALL

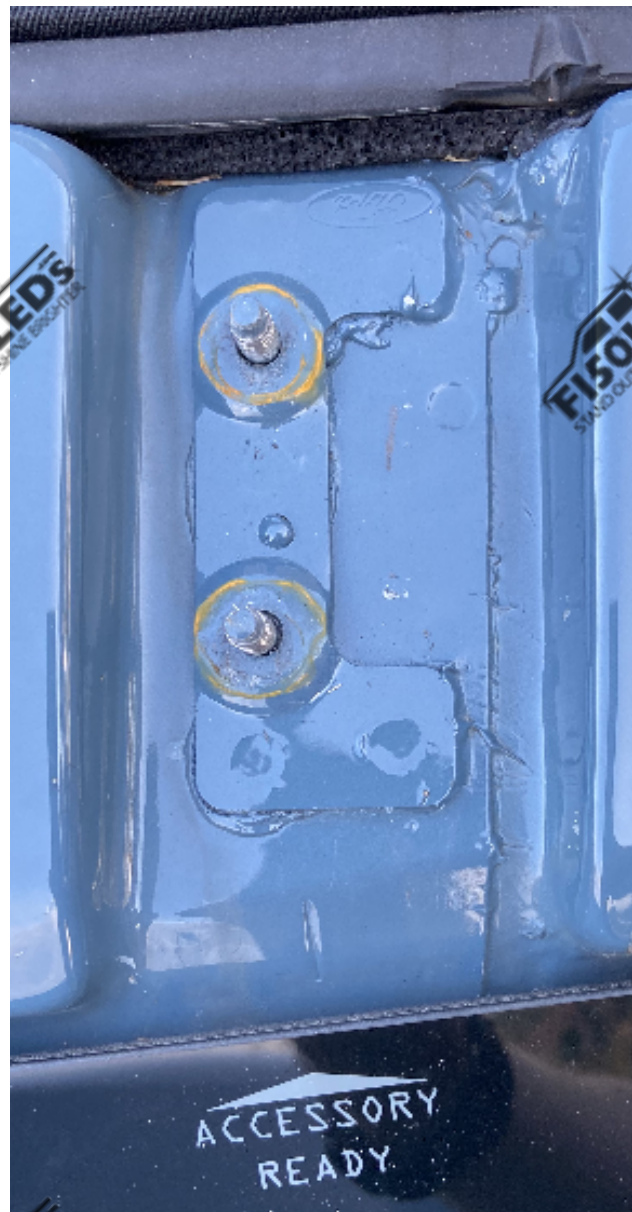
## STEP 1

Press down on the tab of the plastic covering and pull the plastic covering away from the truck to expose the accessory ready mounting bolts. Repeat this step on the other side of the truck.



## STEP 2

Using a size 10mm wrench, remove the two nuts from each side of the truck, then remove the black plastic piece from both sides of the truck.

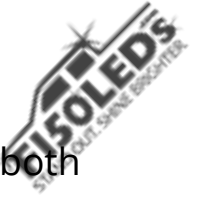




## STEP 3

Mount the brackets to the truck using the two size 10mm nuts that were removed in step 2. \*The black plastic piece and cover that were removed in steps 1 and 2 will not be reinstalled\*





Be sure that the mounting arm is facing to the outside of the truck on both sides.



\*Both images on this page are of the driver side of the truck\*





## STEP 4

Use the included hardware to mount the bar to the brackets. \*It is extremely helpful to have a second set of hands during this step\*

Place the included washers in between the bar and the inside of the mounting bracket as seen in the photo



## STEP 5

Using a 14mm wrench, tighten the bar to the brackets.  
We recommend alternating between the two bolts  
tightening them a few turns at a time.



# STEP 6

Once the bar is installed run the wire from the harness down toward the engine bay and apply a bead of silicone down the wire then place the wire in between the windshield and the truck and press down firmly for one minute.





We recommend going over the sides of the wire with a thin layer of silicone once it is in place.





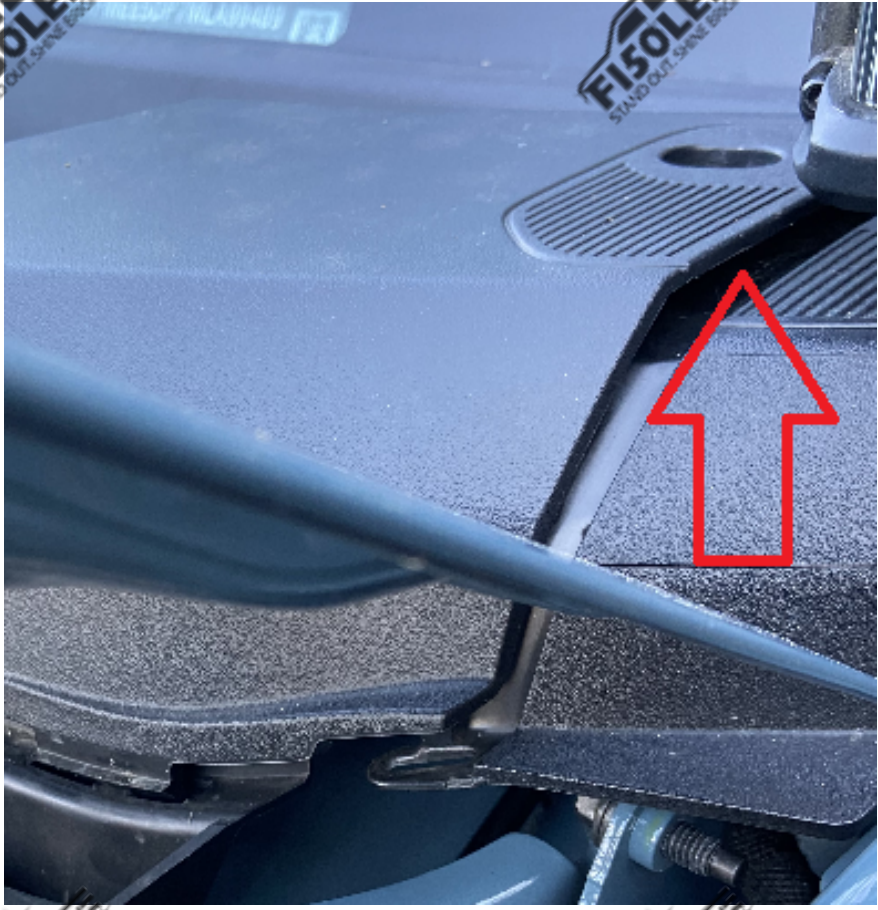
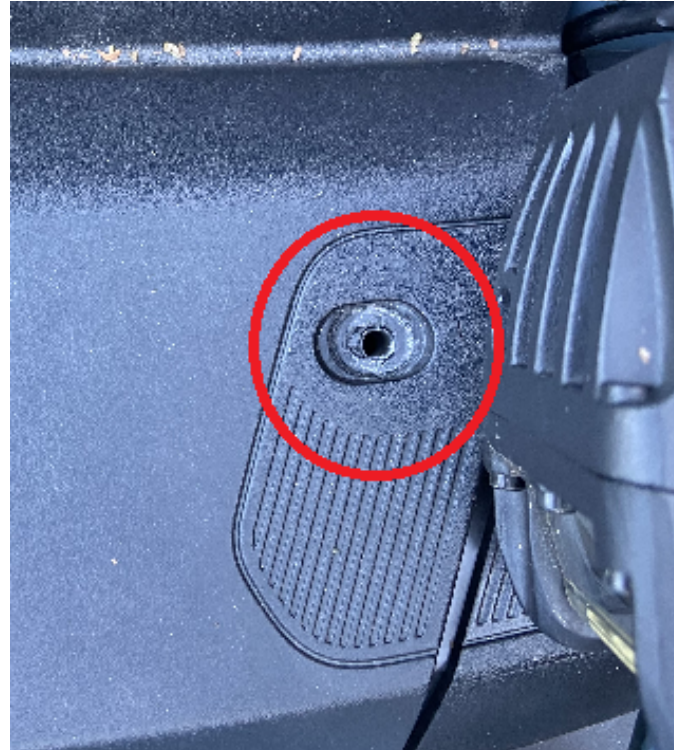
# STEP 7

Use a size T30+ bit to remove the screw circled in the photo below.



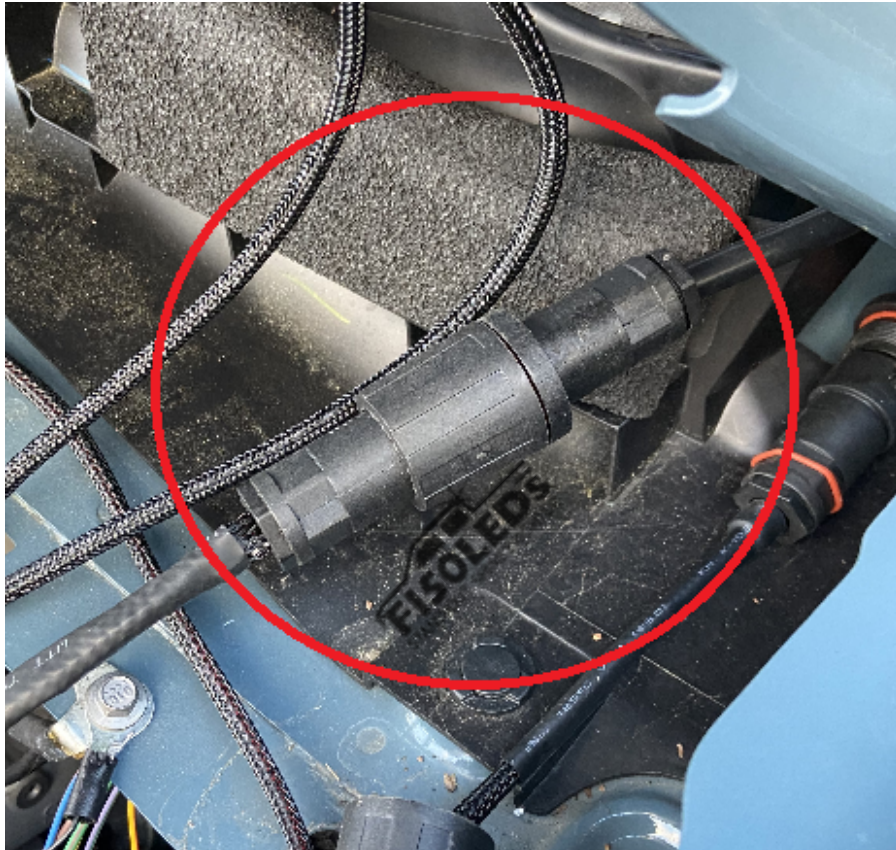


Once this bolt is removed, pry up on the panel and open the hood then run the connector from the bars wire under the panel and into the engine bay area.



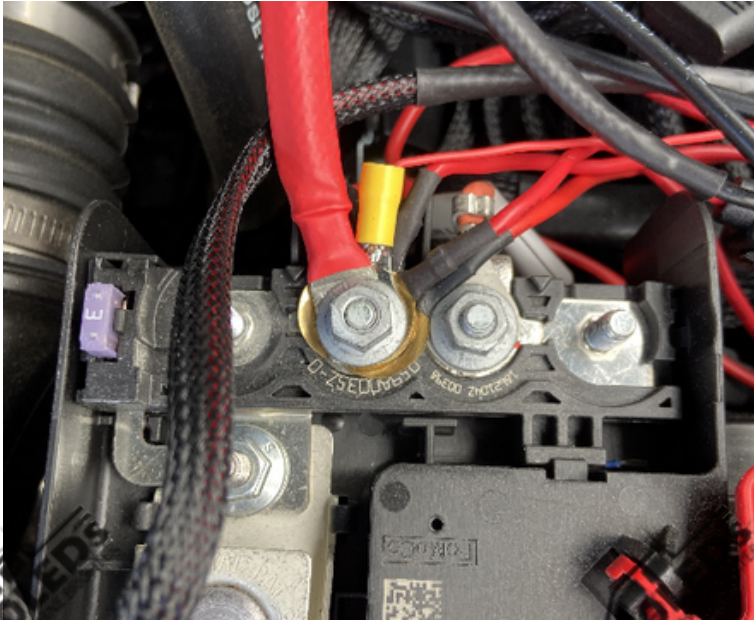
# STEP 8

Connect the wire from the bar to the wiring harness.



# STEP 9

Use a size 10mm wrench to remove the nut on the positive side of the battery then slide the terminal ring from the power wire on the wiring harness over the bolt on the battery and reinstall the nut.

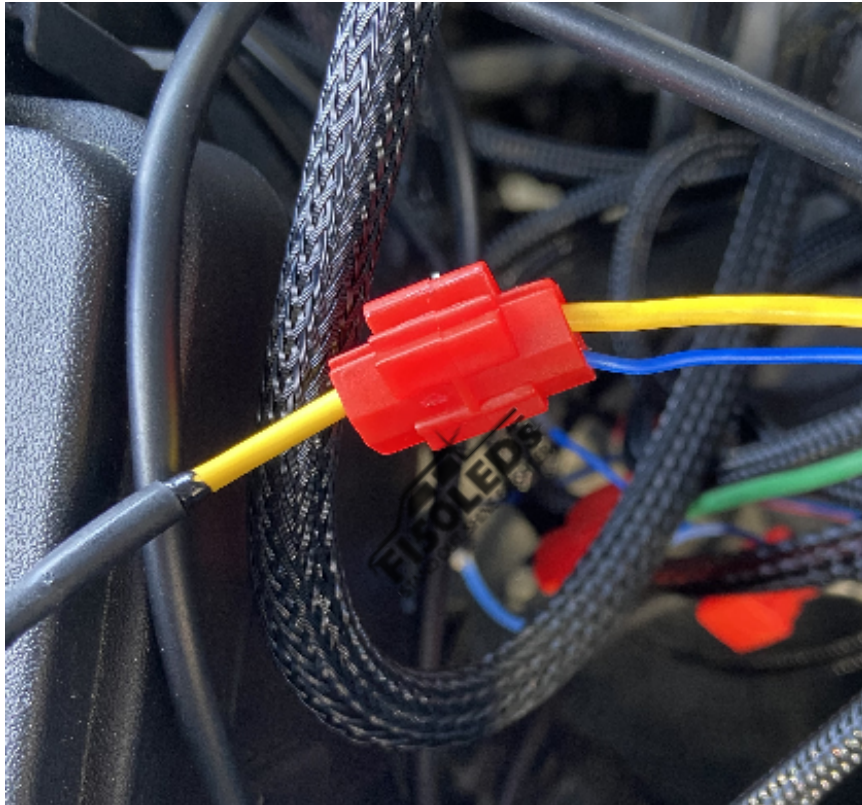


Repeat the same steps for the ground on the battery.



## STEP 10

For Broncos that are equipped with the auxiliary switches, take the blue wire from the wiring harness and connect it the Aux 1 switches wire. \*This broncos Aux 1 switch wire is yellow, please check your broncos manual to ensure you connect to the correct color wire for Aux 1.\*





# STEP 11

Use the included zip ties to secure the wiring harness in the engine bay.



Text for support: 706-214-2618  
Visit our site to chat: [www.F150LEDs.com](http://www.F150LEDs.com)  
or email [CustomerSupport@F150LEDs.com](mailto:CustomerSupport@F150LEDs.com)

