

21+ Raptor Door Sill Kit

Step 1

Open your kit and lay out all four plates like shown below. The two longer plates will be for the front doors, and the two shorter plates will be for the back doors. The plates with the longer wires will be for the passenger side of the truck.



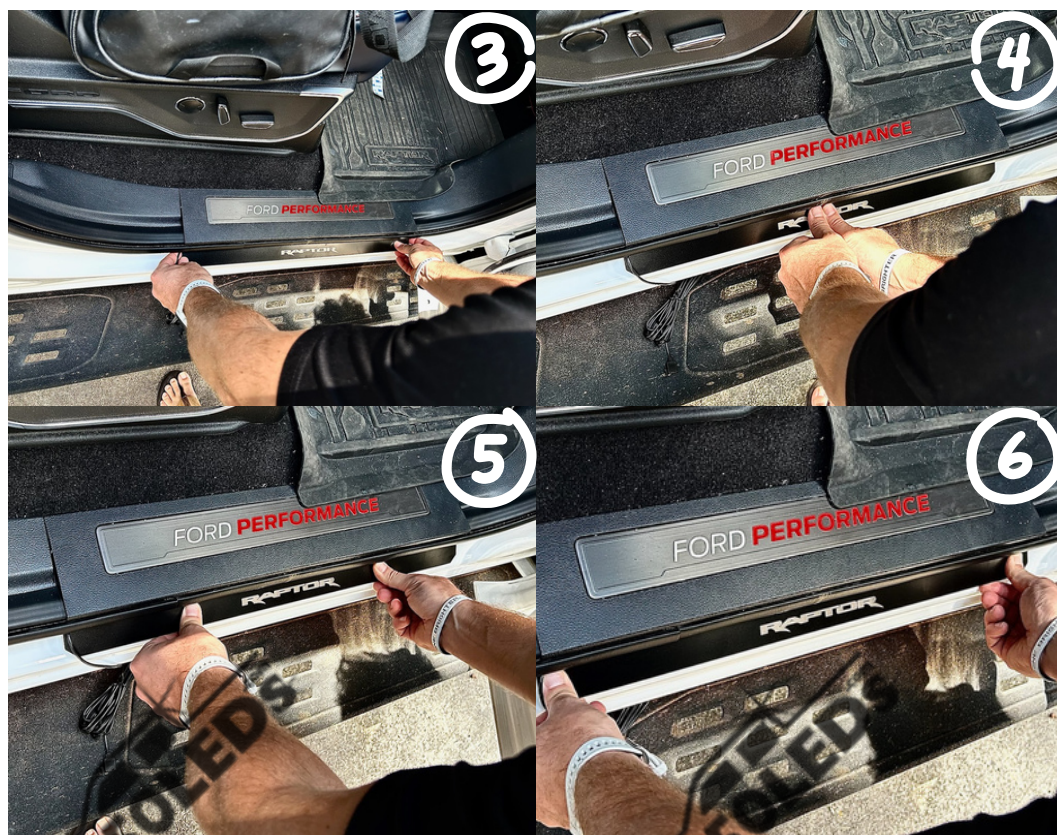
***We recommend you go ahead and fold up the seats in the back of your truck for installation purposes.**

Step 2

Starting on the passenger side front door, use the included prep wipes to clean off the mounting surface right under the plastic trim cover. Then you will need to grab the longer door sill plate that has the longer wire and remove the 3M tape like shown below.



Once the 3M tape has been removed, line up the door sill plate with the plastic trim cover and mount the plate to the truck.



***Press firmly from the middle to the ends of the plate.**

Step 3

Remove the plastic trim cover by prying one side of the cover off and gently lifting. You will then need to pull up on rubber seal so that you can pass the wire from the door sill plate into the truck.



Once you have the wire through, unfold the rest and go ahead and run the wire along side the passenger side seat and along side the rear seat as well. Then come back to the rubber seal and slide it into place over the wire and pop the plastic trim cover back onto the truck.



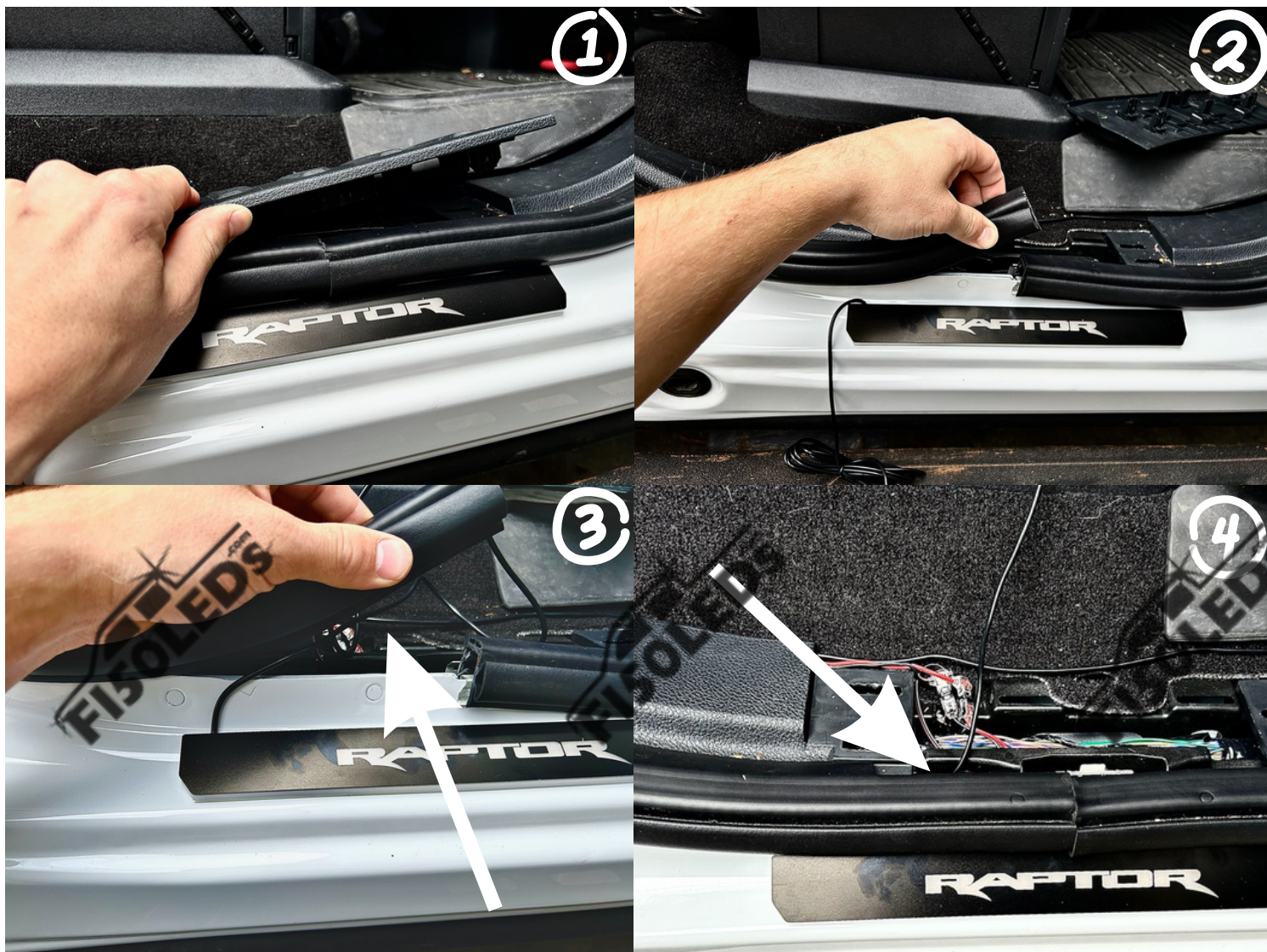
*If you have trouble getting the rubber seal back into place, you will notice there are actually two sections of this seal and if you have both of them lifted at the same time, pushing down on them together at the same time should allow them to fall back into place properly. This is what worked for us.

Step 4

With the smaller plate that has the longer wire, you are going to do the same process you just did with the bigger plate.



Once you get the plate mounted, begin to take the plastic trim cover off along with the rubber seal. Run the wire from the door sill plate into the truck and place the rubber seal back over the wire.



***It would be easiest if you went ahead and repeated these steps on the driver side. Mounting the longer plate in the front and the shorter plate in the back. (Both of these plates should have shorter wires.) Leave the plastic trim cover off the rear driver side.**

Step 5

Once you have all the plates mounted, it is time to hook them up and hide any exposed wires. Starting with the passenger side, you will need to tuck the wire coming from the long plate in the front into the plastic trim of the truck like shown in the pictures below.



****This wire continues all the way to the back behind the back seat. Continue to hide the wire along with the wire from the small plate. See photo on next page.**

Do the same thing with the small plate on the passenger side. You should have both wires running together at this point. Keep tucking them in the plastic trim up until you are almost past the seatbelt.



****We used a flat head screwdriver to gently wedge in between the plastic trim in order to make it easier to hide the wires.**



****Your back seat should be lifted up at this point and now you will need to pull the wires from the passenger side plates underneath the back seat.**



There is a small space behind the back rear passenger seat for you to pull the wires through.

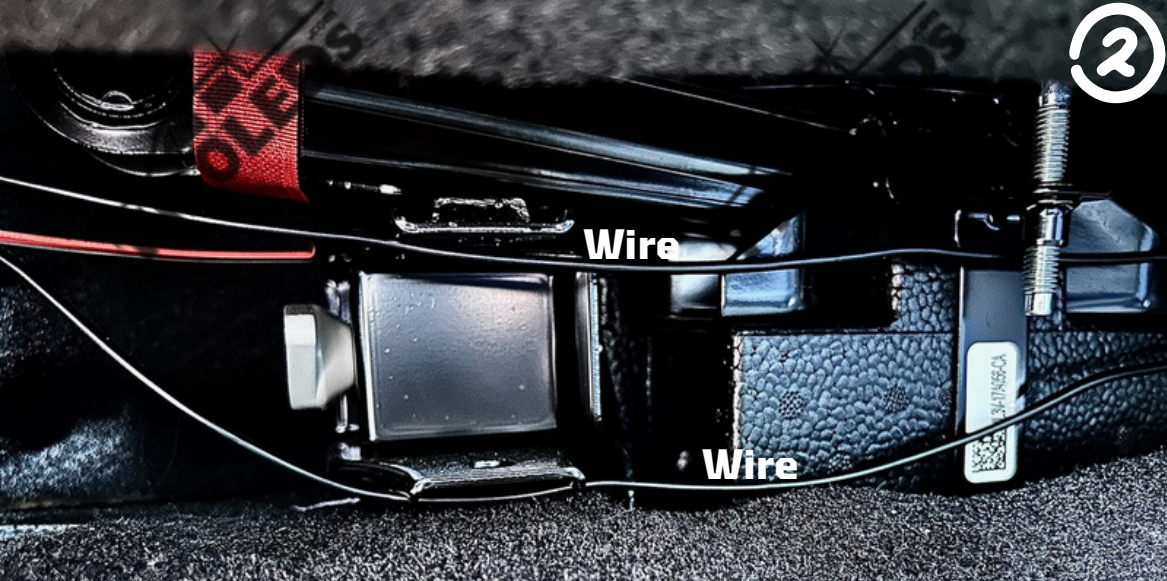


*Small Space

Wire

Wire

2



****Pull them all the way through to the underneath of the rear driver side seat.**

2



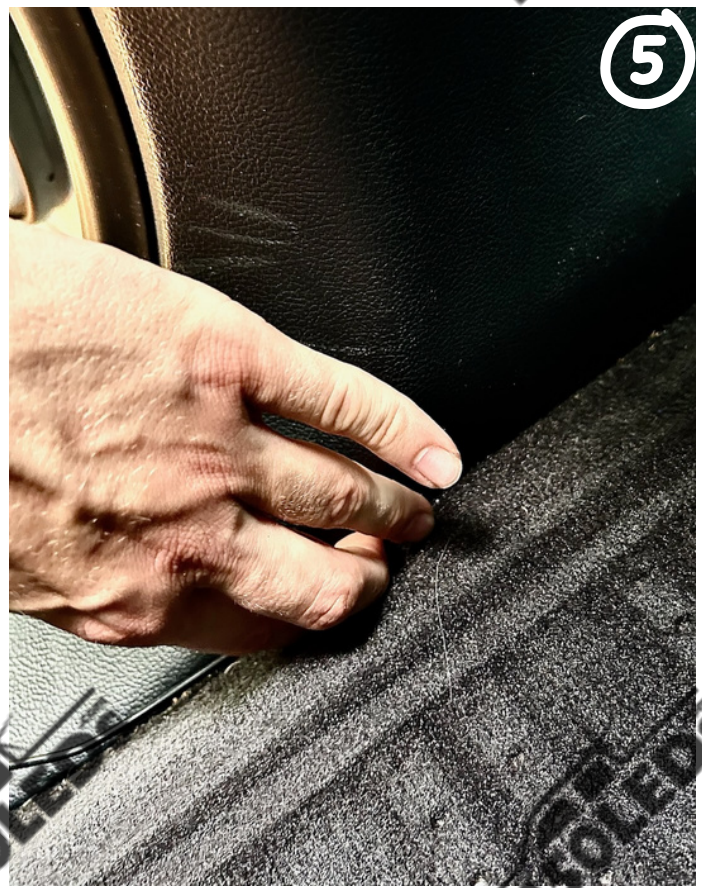
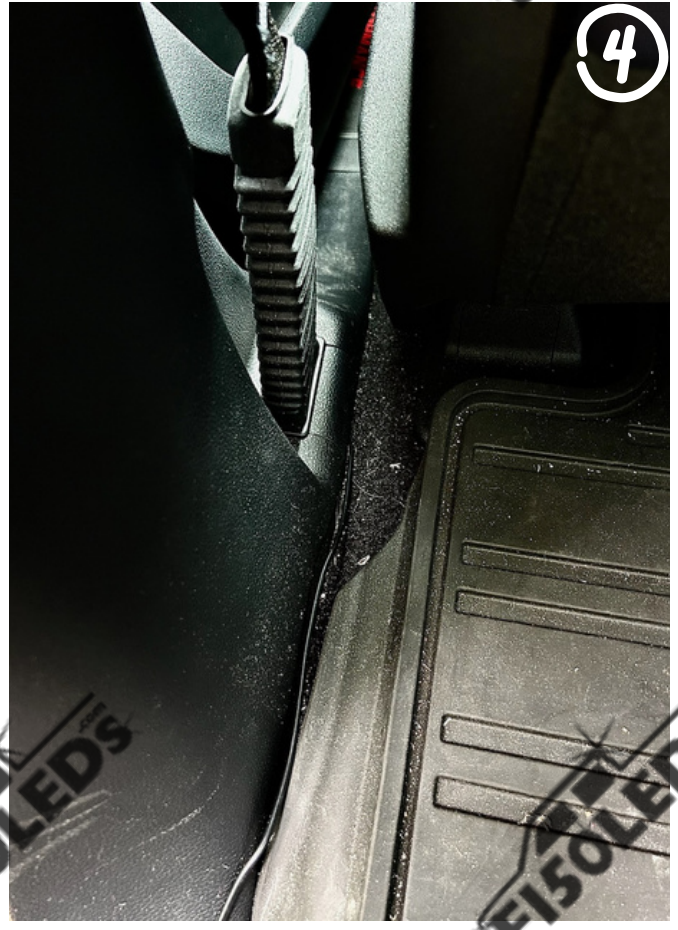
****Small space in the middle that we ran our wire through.**

3



Step 6

Then we will hide our wires from our drivers side.



Step 7

Now you should be at the point where you can connect your plates together with the power harness. On the rear driver side door, you will need to open up the bundle of wires underneath where the plastic trim cover was, and locate the ground and power wires. Use the quick splice connectors included with the kit to connect the red power wire from the door sill harness to the , and the black ground wire from the door sill harness to the .

