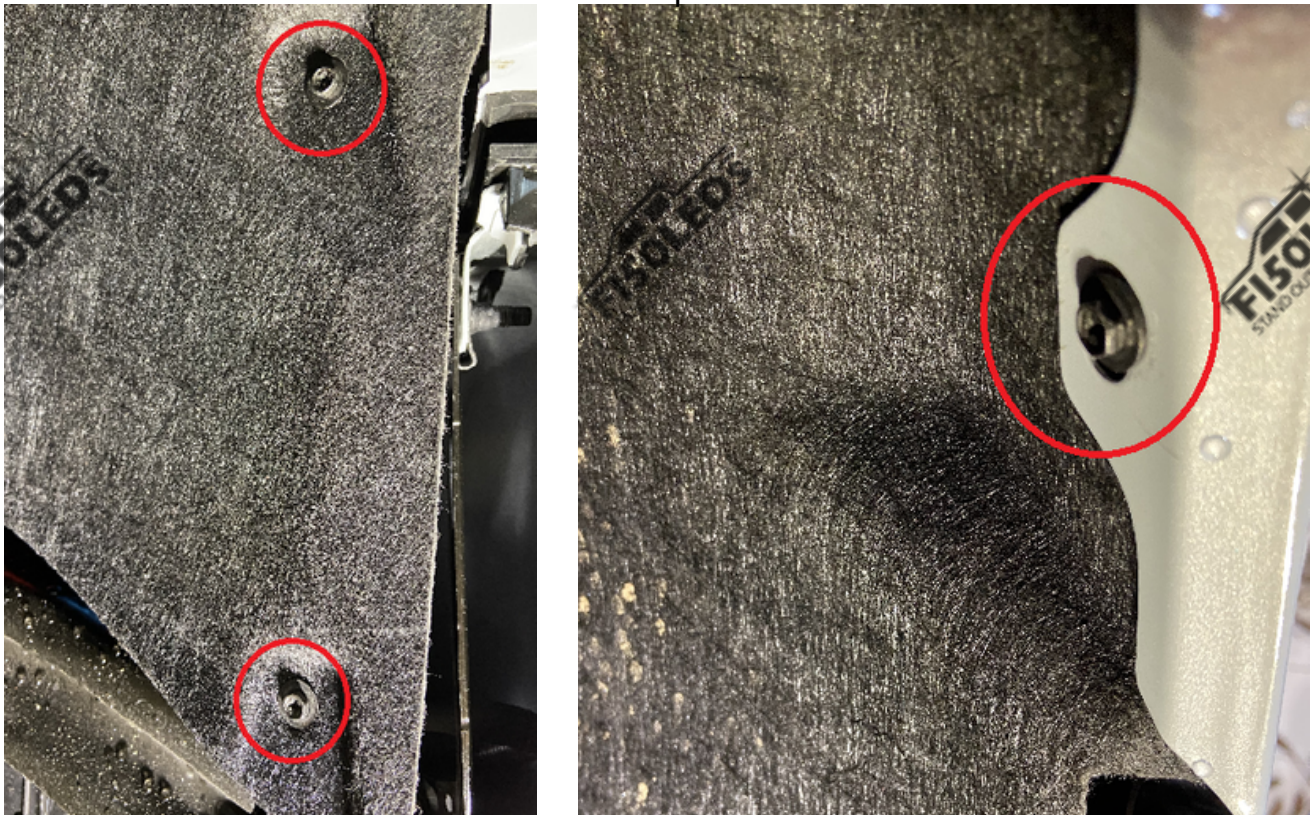


2021 F150 MKV HIGH BEAM INSTALLATION

To gain access to the Front Marker bulb, going through the wheel well liner is the easiest way.

STEP 1

Remove the three screws seen in the photos below to be able to push your wheel well liner out of the way. Using a size 7mm socket or a phillips head screw driver remove the screws in the photos below.



The first two screws are located right inside the wheel well, and the screw connecting the wheel well liner to the trim piece is at the top of the wheel well.

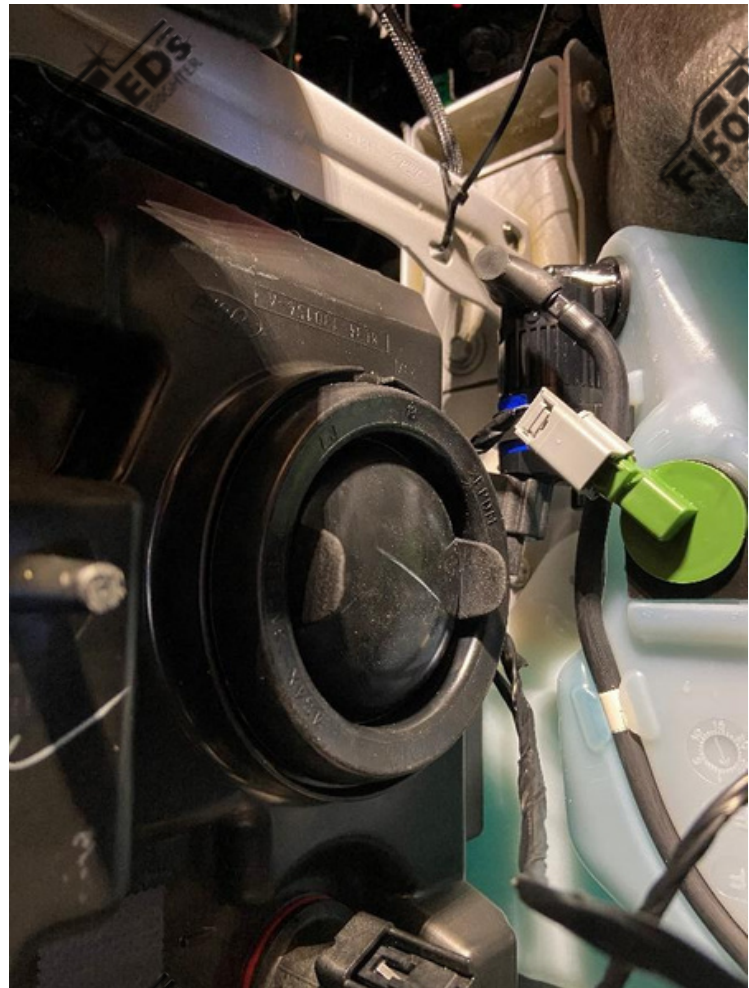
Once you have removed these screws, push the wheel well liner out of the way to gain access to the High beam bulb.

Now that you have removed these screws, push the wheel well liner out of the way to gain access to the High beam bulb.



STEP 2

Remove the OEM Rubber cap and High beam bulb. The High beam bulb is the lower bulb in the headlight assembly.



Once the Rubber cap is removed turn the High beam bulb counterclockwise to release it from the housing.

Now that the bulb is removed, disconnect the bulb from the factory harness.



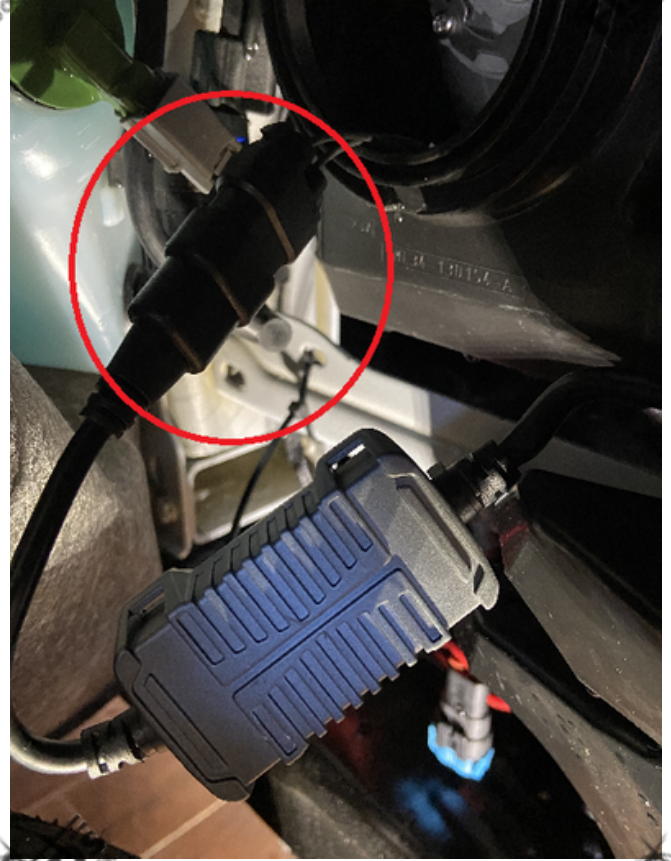
STEP 3

Installing the MKV High beam bulb.

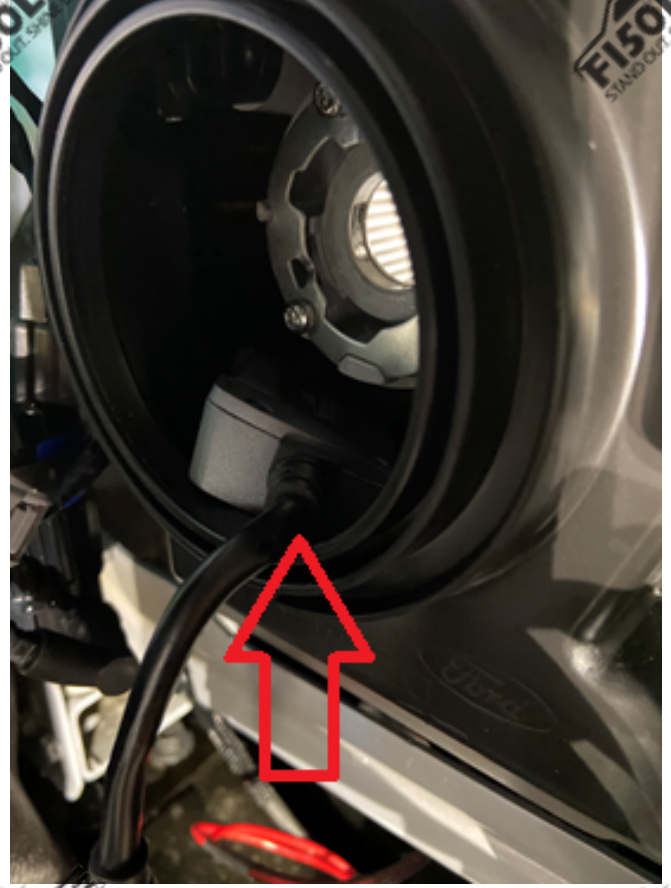
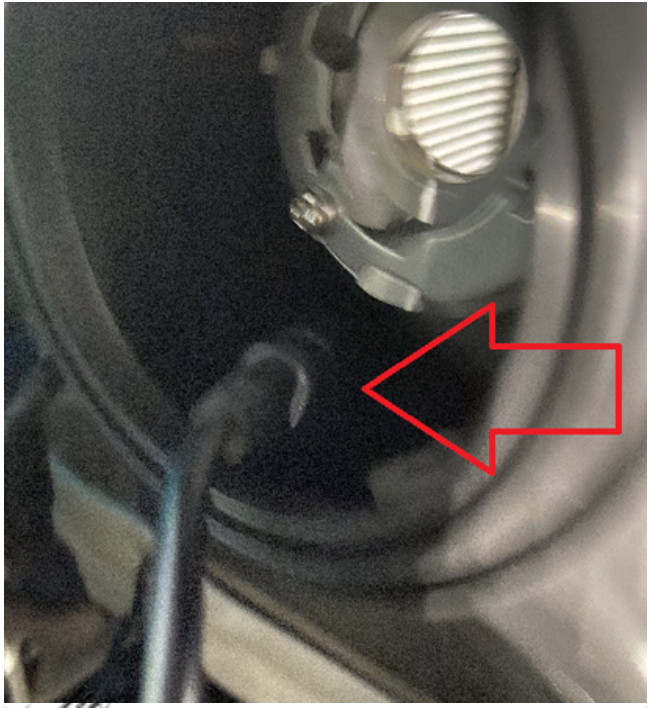
Before installing the bulb connect the MKV High beam bulb to the included Ballast.



Once they are connected, connect the ballast to the factory high beam harness.



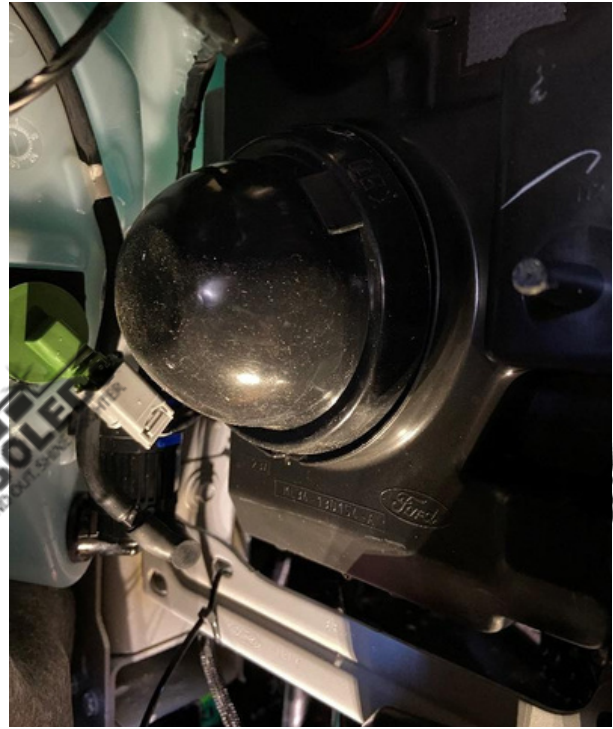
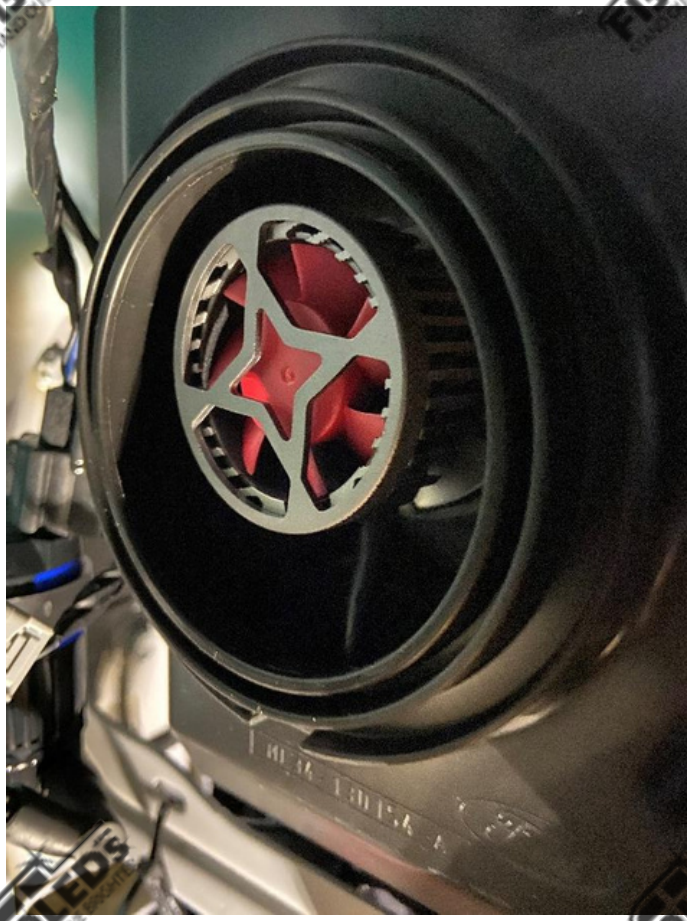
Next, slide this connection into the bottom of the High beam housing then slide the ballast into the bottom of the High beam housing as well.





Once this is done, take the MKV High beam bulb line up the tabs with the tabs in the housing and slide it into place and give it a clockwise turn to lock it into place.

After installing the bulb, take the rubber grommet included with the kit and place it over the opening.



STEP 4

Put the wheel well liner back into place and screw the screws back into place and repeat for the other side of the truck!



Text for support: 706-214-2618

Visit our site to chat: www.F150LEDs.com
or email CustomerSupport@F150LEDs.com

