

2021 F150 GEN 2 RAPTOR GRILLE KIT

STEP 1

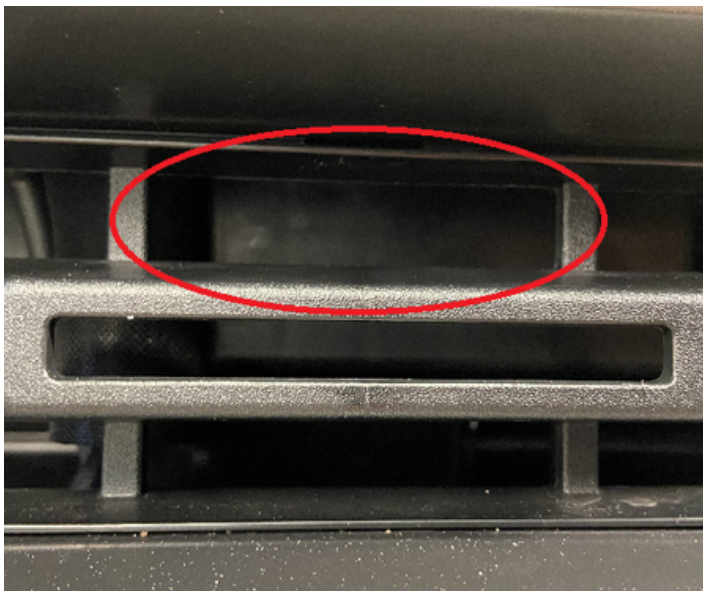
Locate where you would like to mount your Raptor lights.

The location of the lights is completely up to your preference, for this install we are going to be mounting them in the circled locations below.



STEP 2

Take the connector and slide it through the opening below.

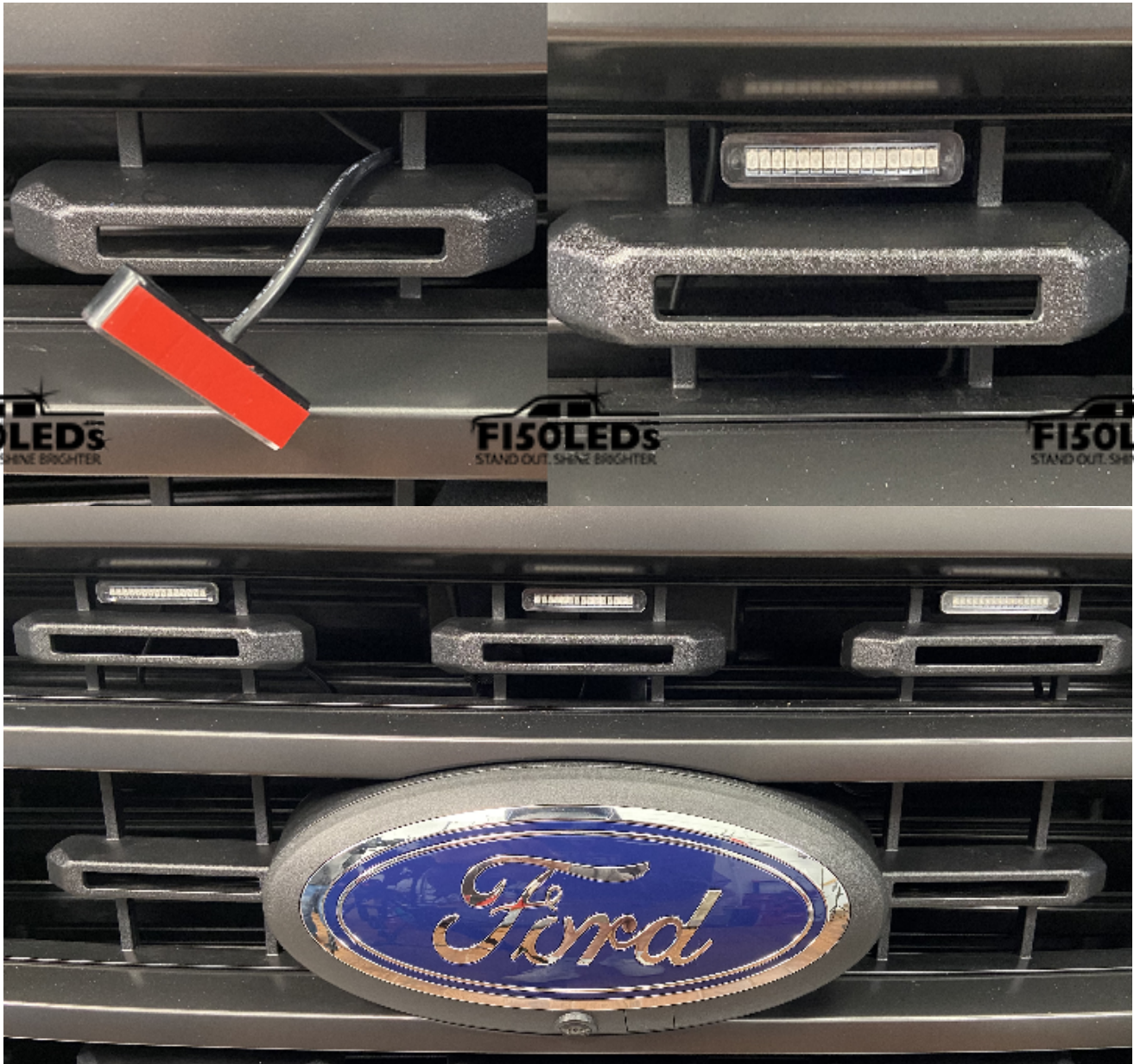




Repeat this step for the other two lights or three lights.

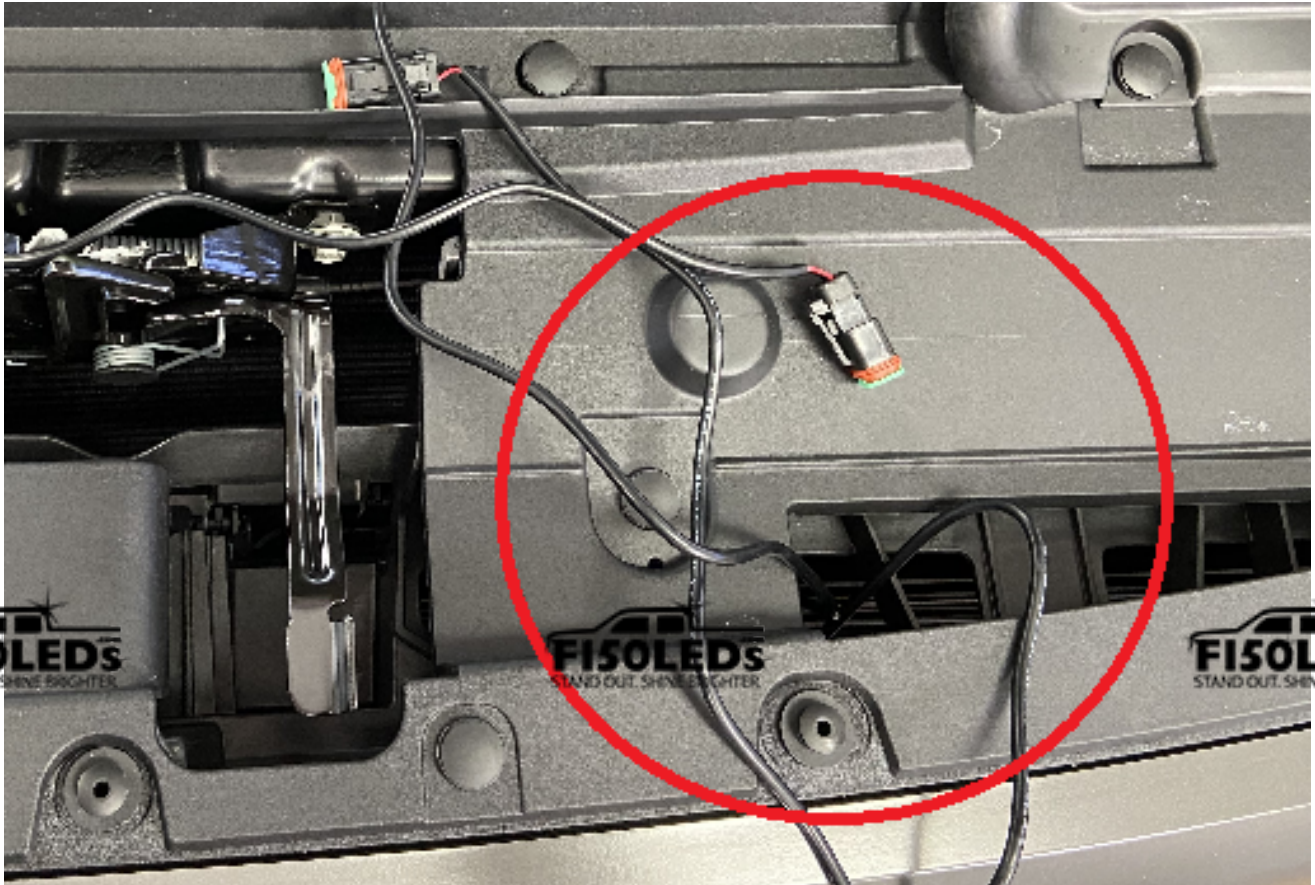
STEP 3

After sliding all three (or four) lights through your grille, stick the auto grade 3M adhesive to each of the lights then mount them to your desired location by pressing them on your truck and applying firm pressure for 1-2 minutes.



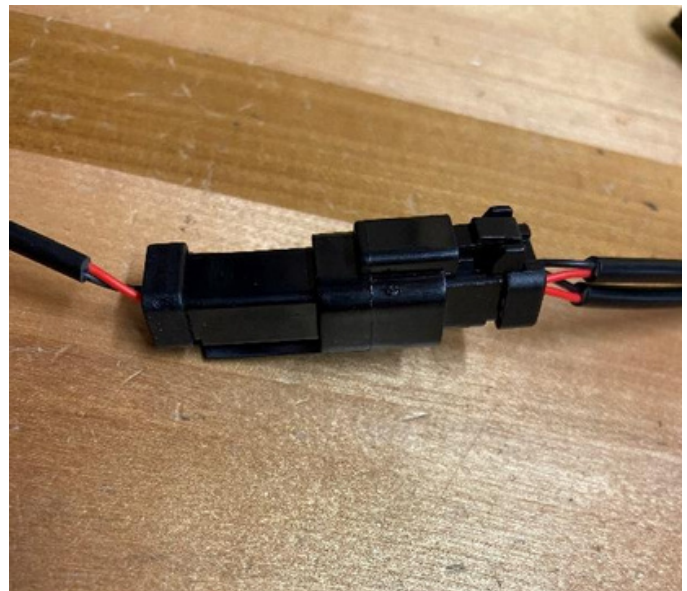
STEP 4

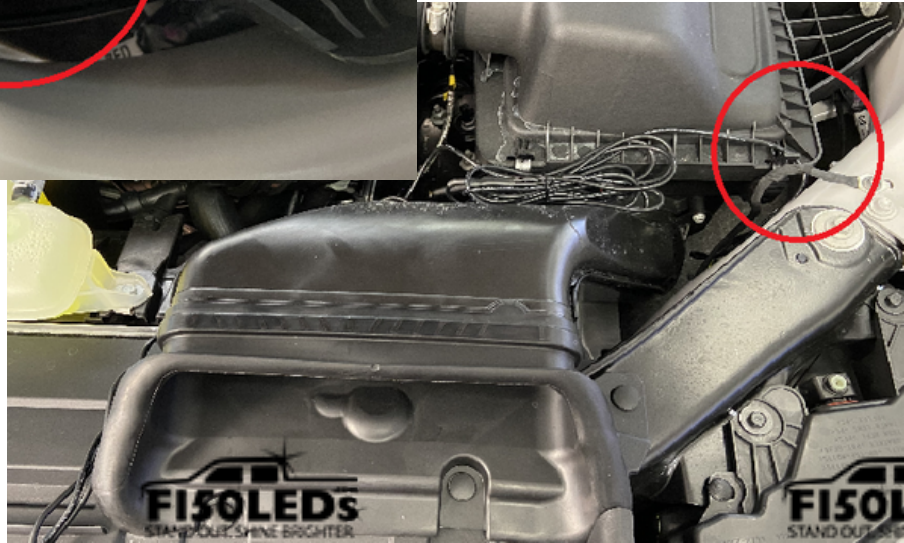
Reach down behind your grille and grab the wire from the light and pull it up through the opening at the top of the grille. You may need a pair of long pliers to reach the wires.



STEP 5

Connect the wires from the Raptor lights to the power harness in your kit. Be sure to fully press in these connections until you hear a click. Then run the harness down to the headlight assembly near the Front marker bulb.

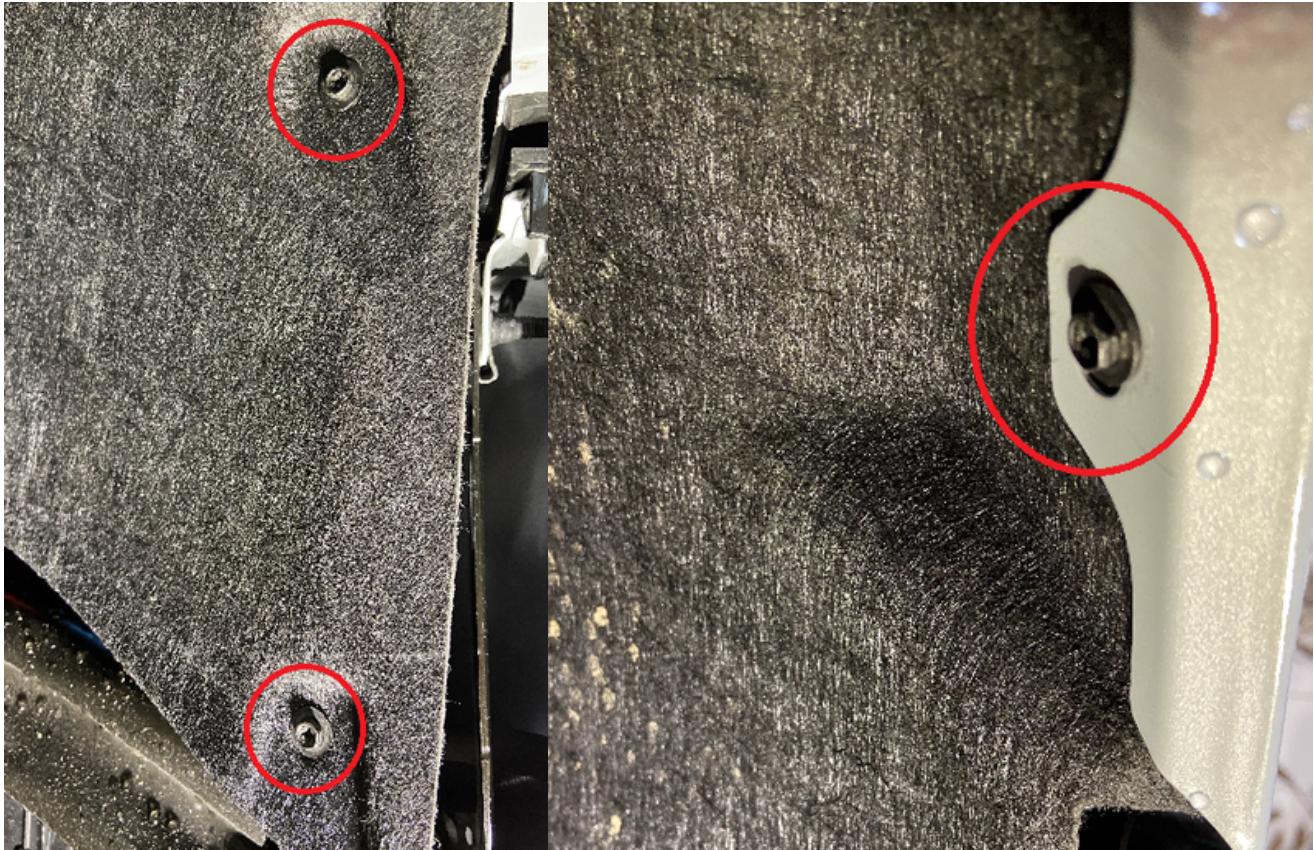




STEP 6

Connect the power harness to the Front marker bulb to power the kit. To gain access to the Front Marker bulb, going through the wheel well liner is the easiest way.

Using a size 7mm socket or a phillips head screwdriver remove the screws in the photos below.



The first two screws are located right inside the wheel well, and the screw connecting the wheel well liner to the trim piece is at the top of the wheel well.

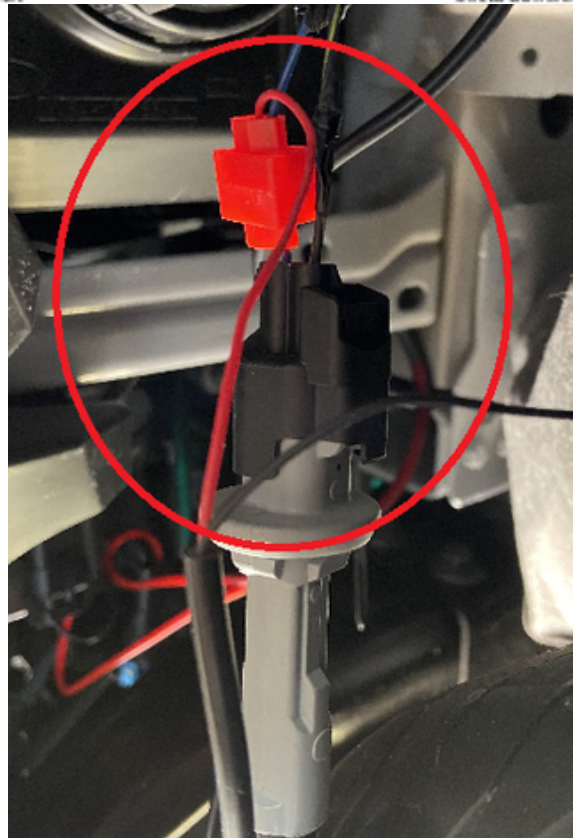
Once you have removed these screws, push the wheel well liner out of the way to gain access to the front marker bulb.

Once you move the wheel well liner, remove the front marker bulb with a counterclockwise turn.

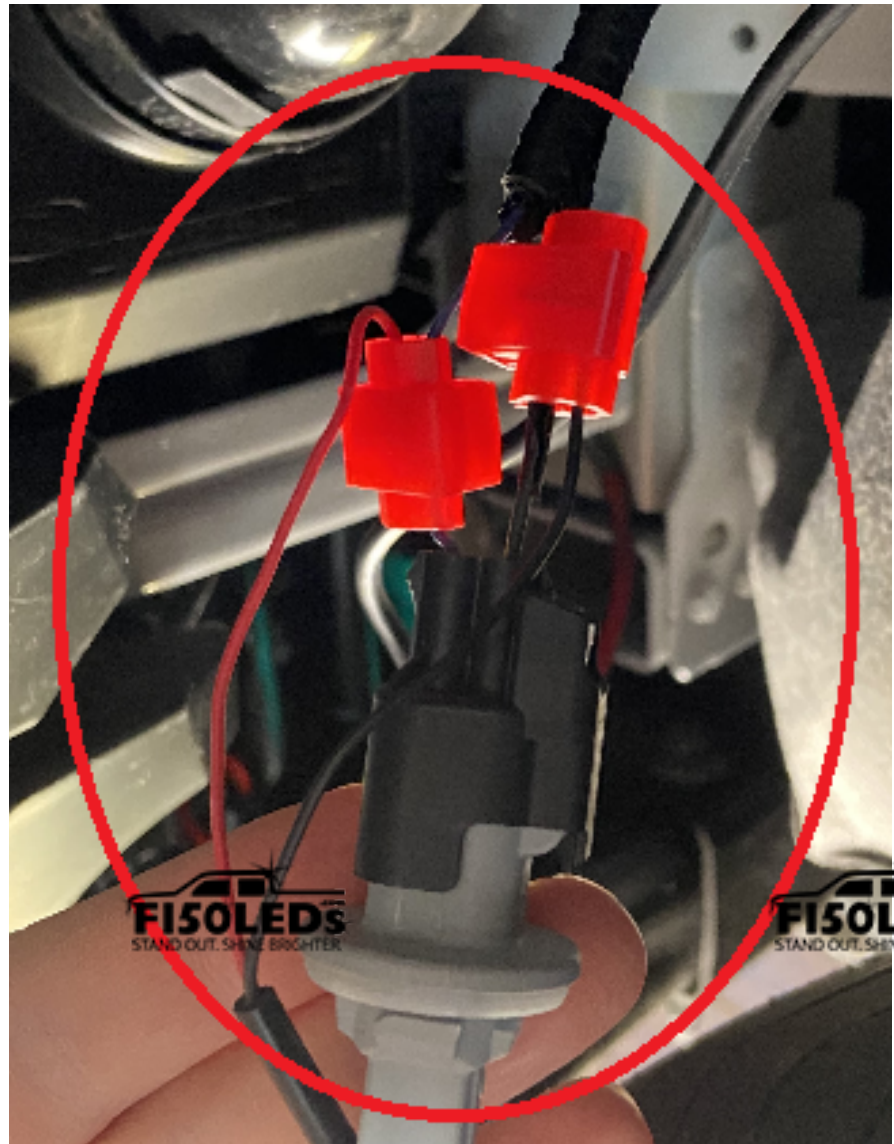


Now that the bulb is removed, use the included quick splice connectors to connect the wires from the Raptor kits power harness to the two wires on the front marker socket.

Take the red wire from the power harness and connect it to the blue wire coming from the front marker socket.

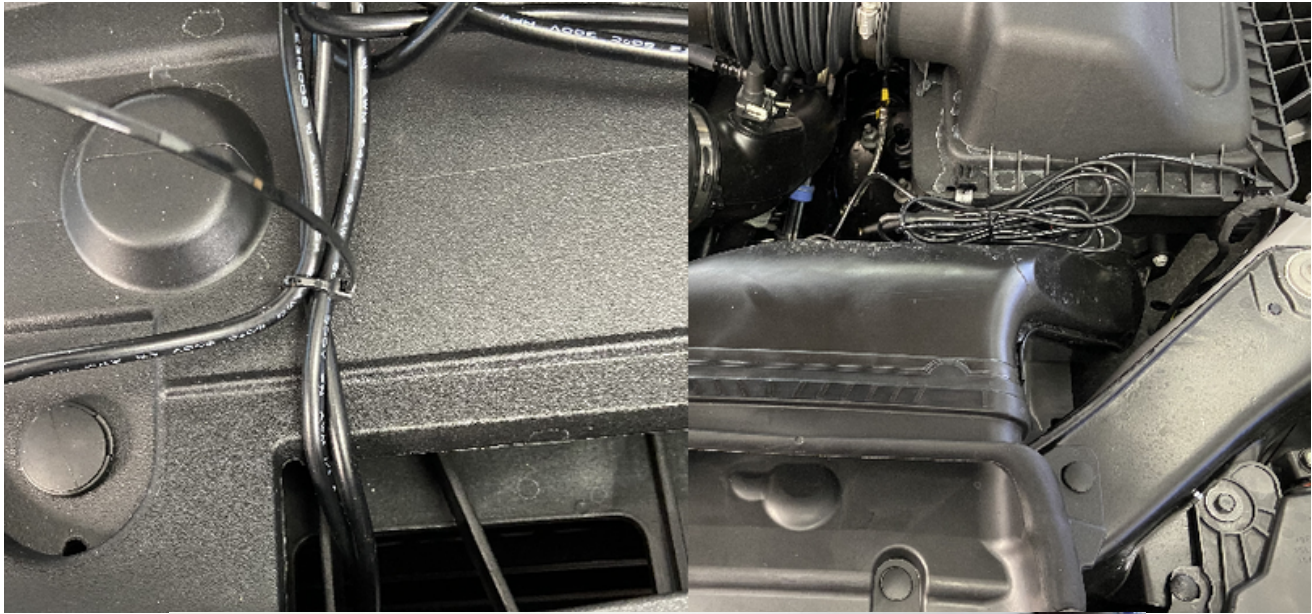


Now take the black wire from the power harness and connect it to the black wire coming from the front marker socket.



STEP 7

Test the kit to ensure it is receiving power then reinstall the front marker into the headlight housing and put the screws back in the wheel well liner. Then use the included zip ties to clean up the excess wire.



Text for support: 706-214-2618

Visit our site to chat: www.F150LEDs.com

or email CustomerSupport@F150LEDs.com

