

# 2021+ F150 BED LIGHT INSTALL

## STEP 1

Use the included adhesion promotion prep wipes to clean of the mounting location.

If you do not prefer this mounting location due to the black plastic tab in the photo you can also mount this strip to the side of the bed seen in the photo below:





## STEP 2

Starting on the driver's side, take the LED strip with the shorter wire and lay it out along the bed rail with the wiring facing the front of the truck.





## STEP 3

Carefully peel back the protective covering from the first section of the LED strip and use the included RTV silicone to line some of the silicone on to the back of the section as seen here.

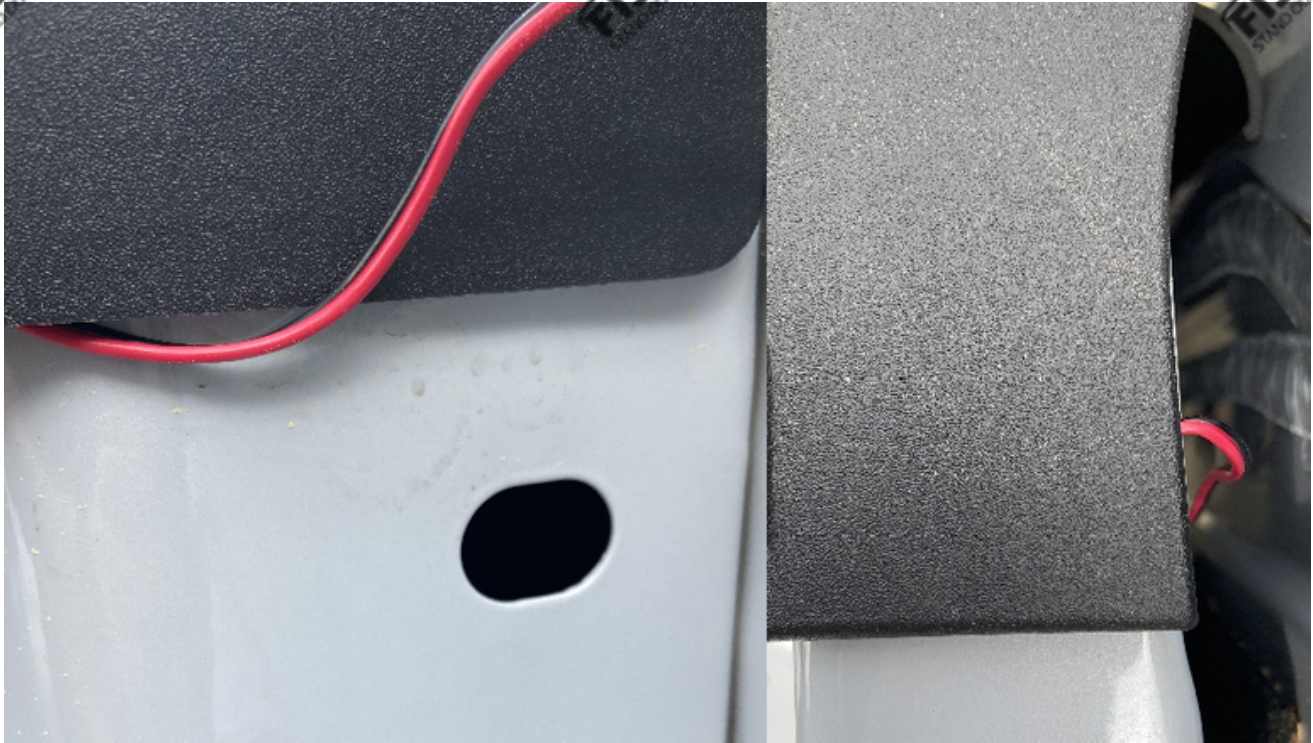
Now mount the strip to your desired mounting location by applying firm pressure on this section for one minute. Once you have done this continue to mount each of the strips one section at a time until the entire strip is mounted.



Take the wire that is in between each strip and use a pry tool on the black plastic cover on the top of the bed rail to pull back on the plastic and tuck the wire under this covering.







Once you have hidden these wires run the wire from the LED strip in between the bed and the cab of the truck.

Take the wire from in between the bed and cab of the truck and run it under the truck to under the rear driver side door.







## STEP 4

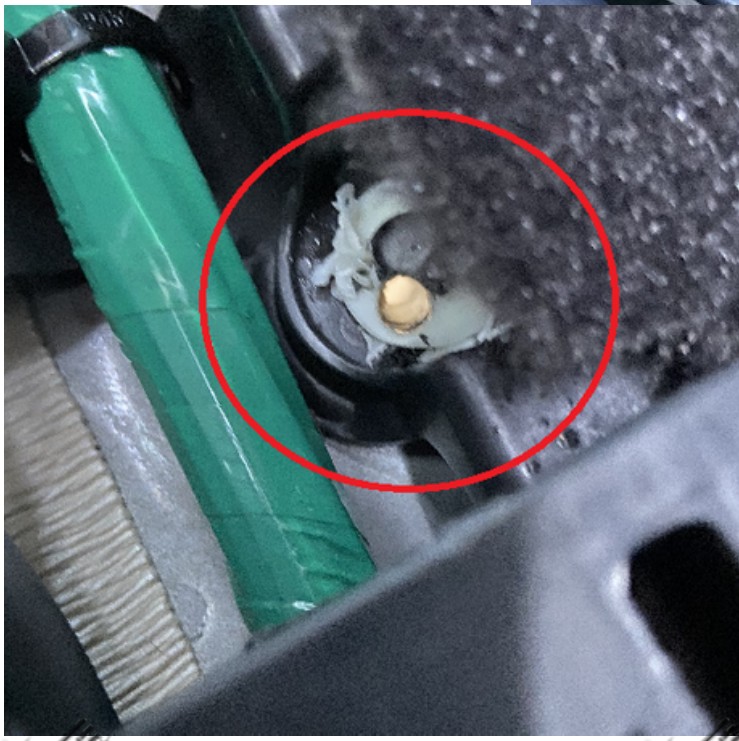
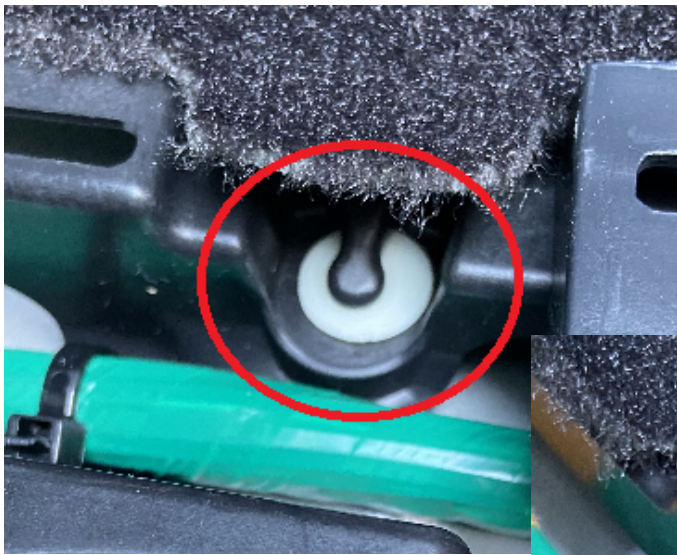
At the rear driver's side door, pull up on the plastic door sill piece to gain access to the wiring bundle and a plastic white tab that will be used to run the wires into the truck.







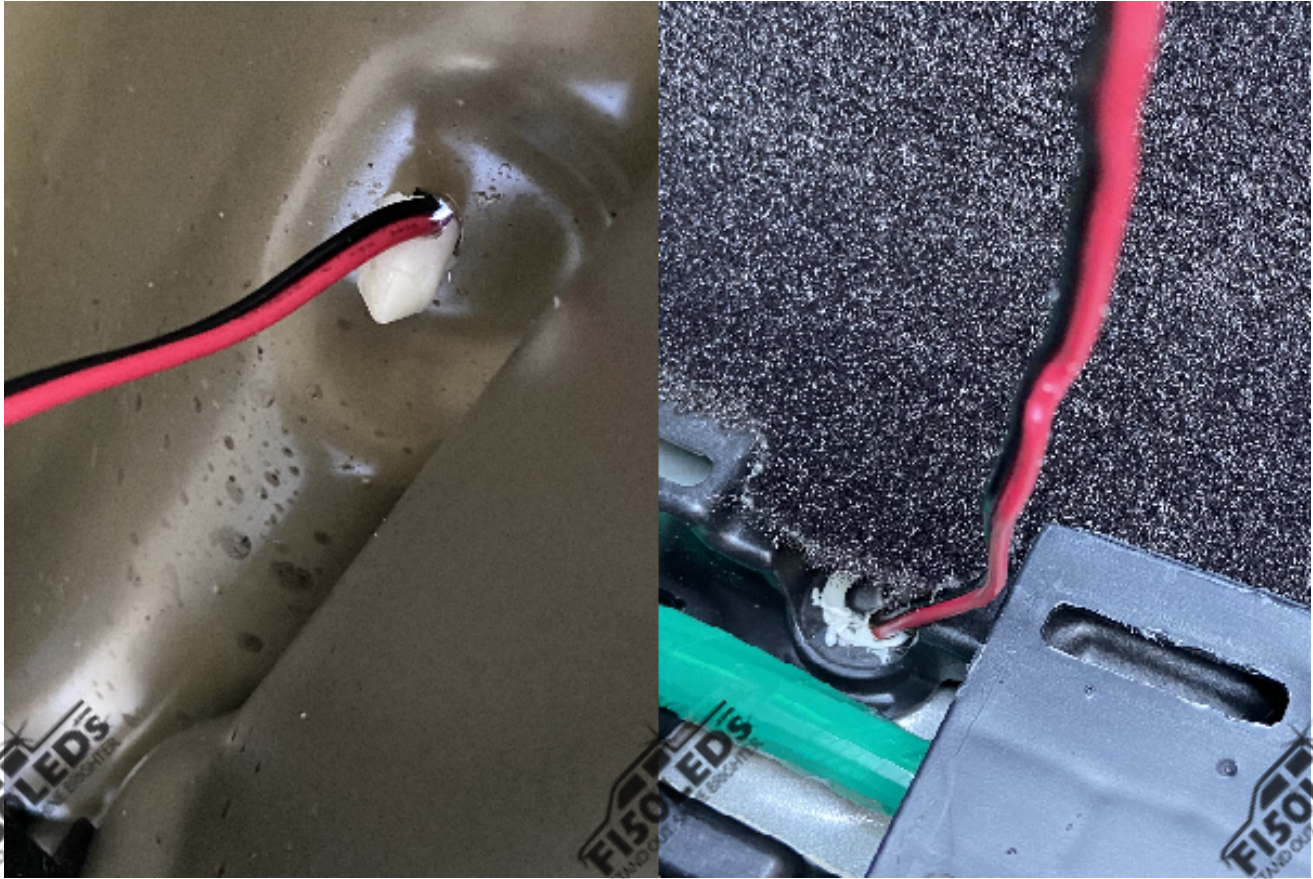
Drill a small hole in the white plastic tab seen in the photos below so that the wires from the running board strip can be ran into the truck.







Once this hole is drilled, run the wire from the strip through this hole and into the cab of the truck.

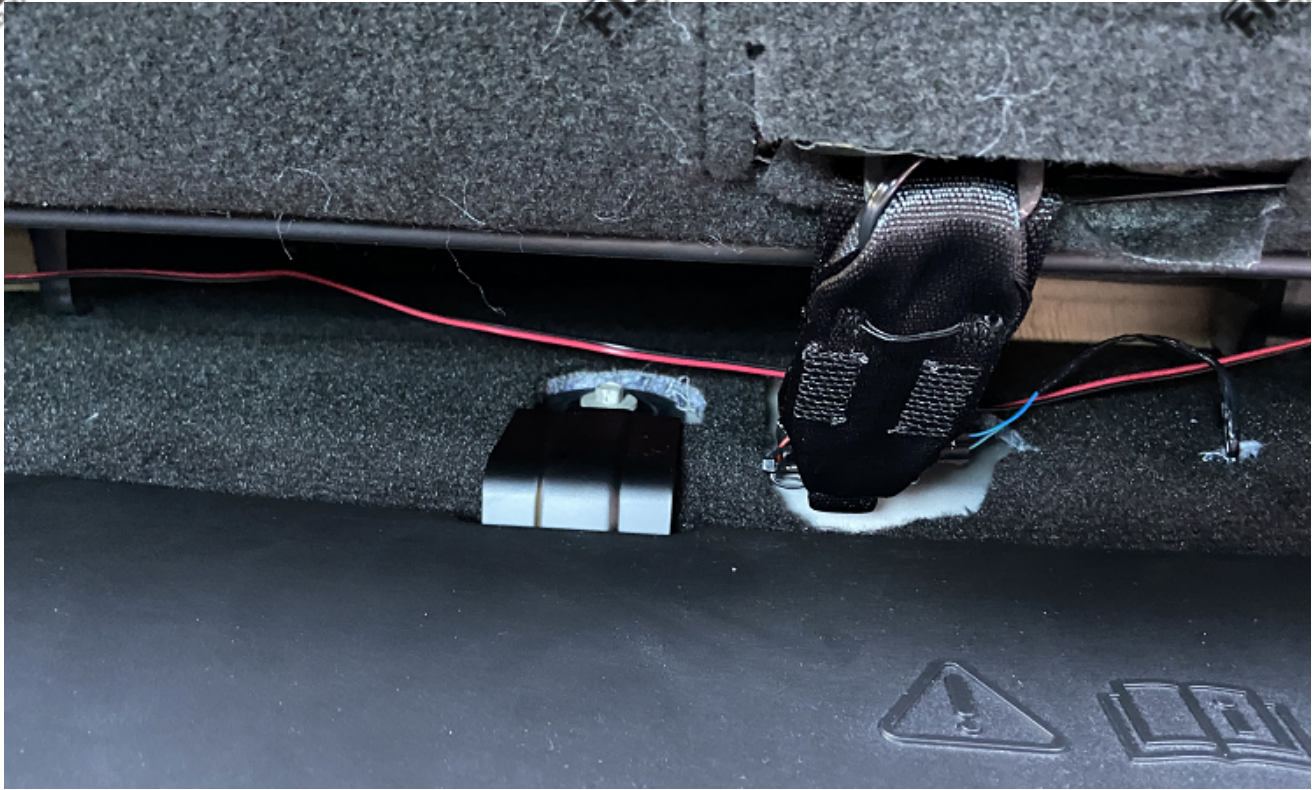


Repeat steps 1 through 4 on the passenger side of the truck using the strip with the longer wire.

Once the passenger side wire is in the truck run the wire behind the back seat of the truck to the driver side door sill panel.





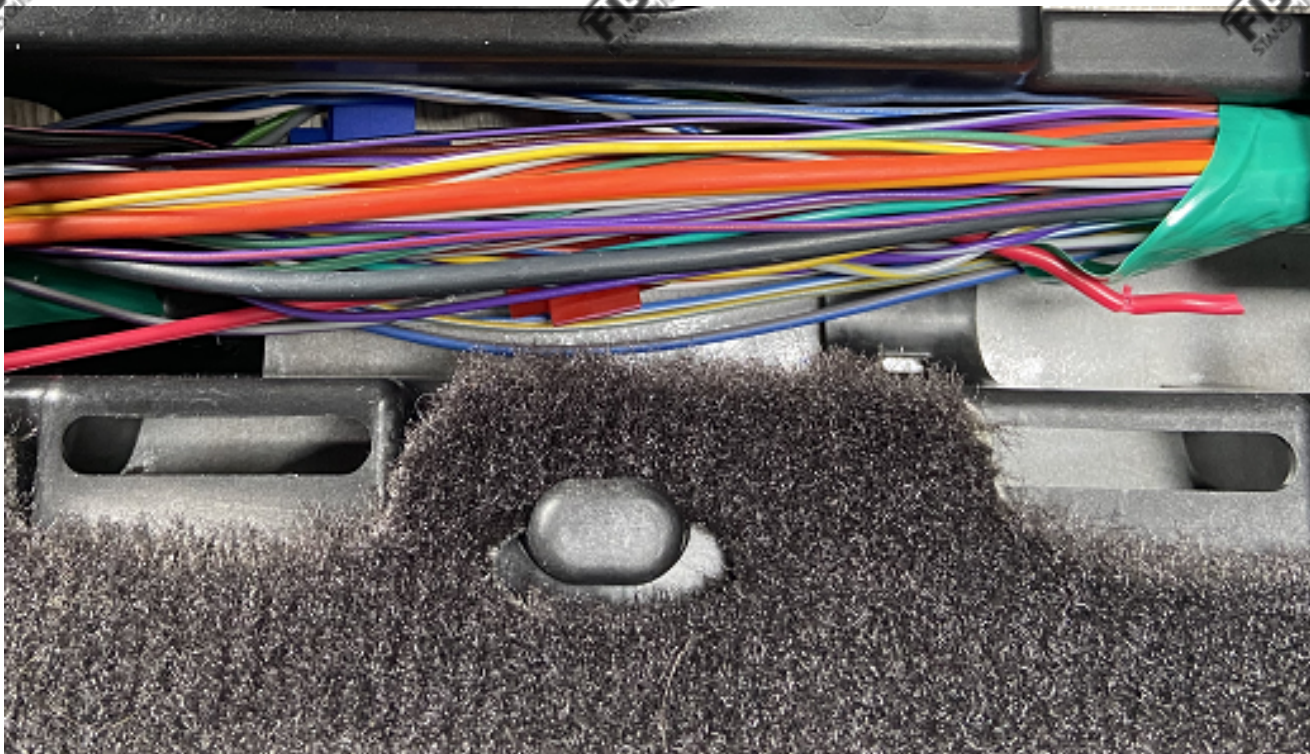


## STEP 5

Carefully cut the protective cover off of the wiring bundle seen below. Be very careful when cutting this open as you do not want to cut any wires that are under the covering.







## STEP 6

Locate a grey wire with a violet strip (power) and a black wire with a purple strip (ground). If your truck has two black wires with a purple switch, use the thicker gauge wire.

## STEP 7

Use the quick splice connectors to connect both red wires from the LED strips to the grey wire with a violet strip, then connect both black wires from the LED strips to the black wire with a purple strip.

***Be careful not to use too much force when pressing down on the metal tab on the quick splice connectors as you do not want to sever a wire.***





## STEP 8

Shut the door of the truck and then open it to test the kit, if it does not light double check the connections of the quick splice connector to ensure they made a solid connection.

## STEP 9

Reinstall the plastic door sill panel.



Text for support: 706-214-2618

Visit our site to chat: [www.F150LEDs.com](http://www.F150LEDs.com)  
or email [CustomerSupport@F150LEDs.com](mailto:CustomerSupport@F150LEDs.com)

