



2021 F150 180W PALADIN BAR INSTALL

STEP 1

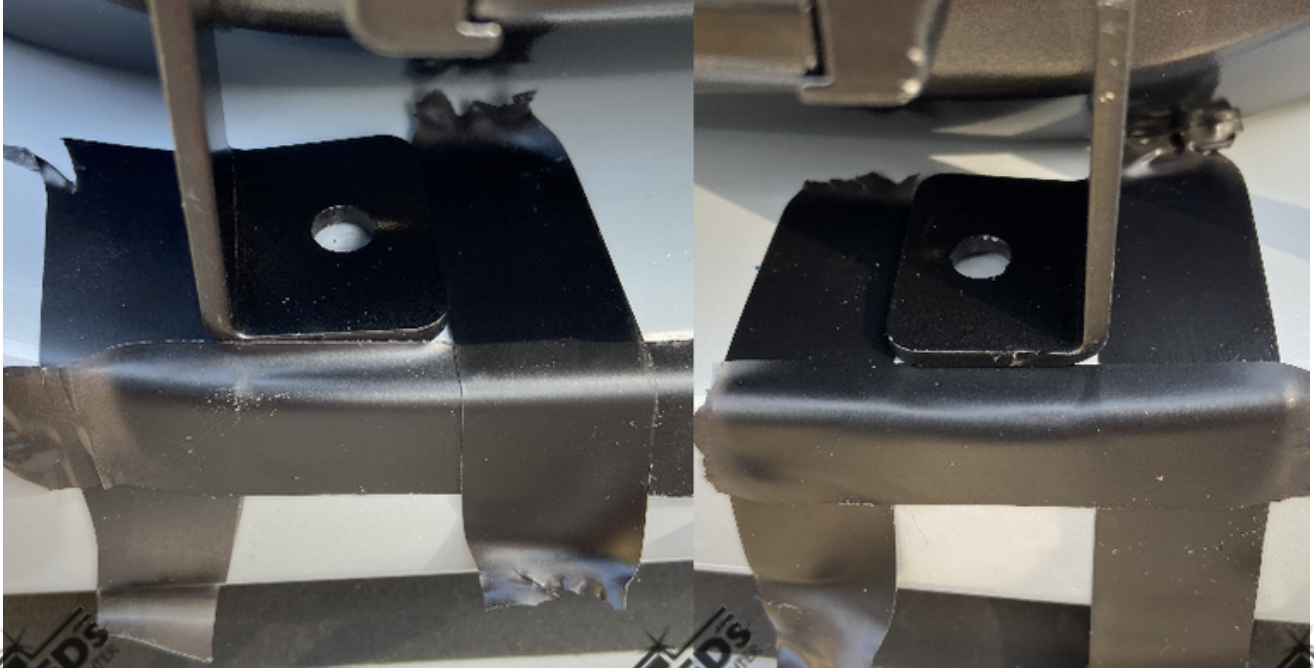
Locate your mounting locations. To locate the mounting locations, take the shorter bolt in the included hardware kit and mount each bracket to the bar with the bottom hole facing inside.

Once you have mounted both brackets set the bar on the front bumper and center the bar.

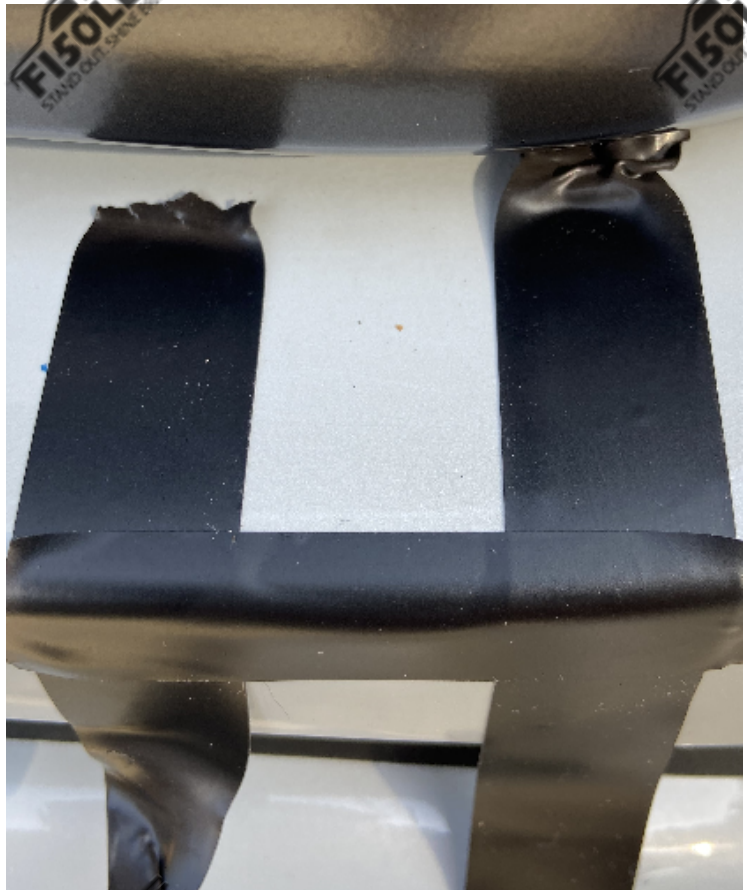


STEP 2

Use electrical tape or painters' tape to make an outline of the bottom of each bracket on the bumper.



It should look something like this image when you remove the bar.



STEP 3

Removing the valance from your truck. To remove the valance, you will need to remove the two size 7mm screws on each side of the wheel well. The two screw locations as seen here →



Once you have removed these screws with some moderate force pull away from the truck and that will release pop tabs. We recommend starting from the outsides and working your way to the middle.

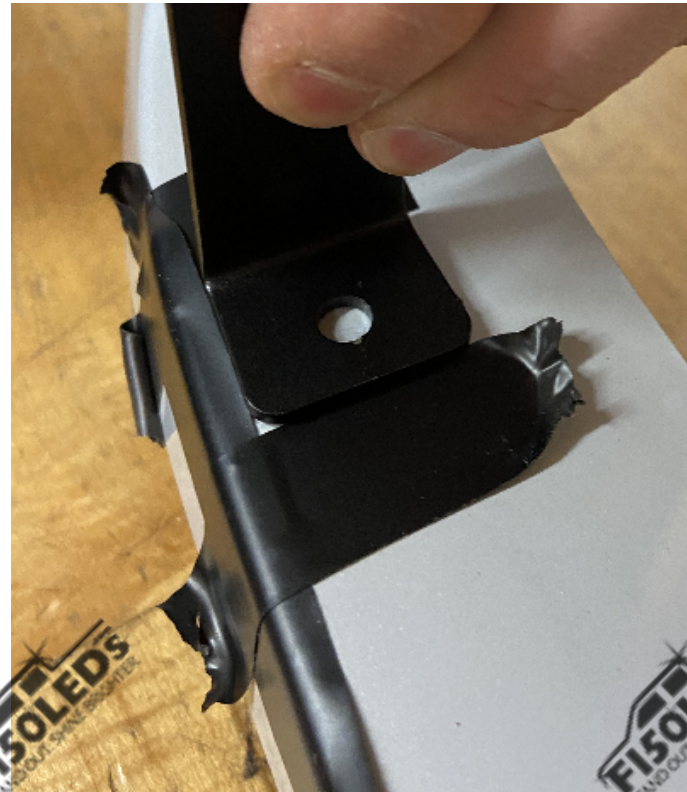




Once the valance is completely removed from the truck you are ready to mount the brackets to the valance.

STEP 4

Remove the brackets from the bar and line them up where the tape was placed on the valance so that you can mark where the hole needs to be drilled.

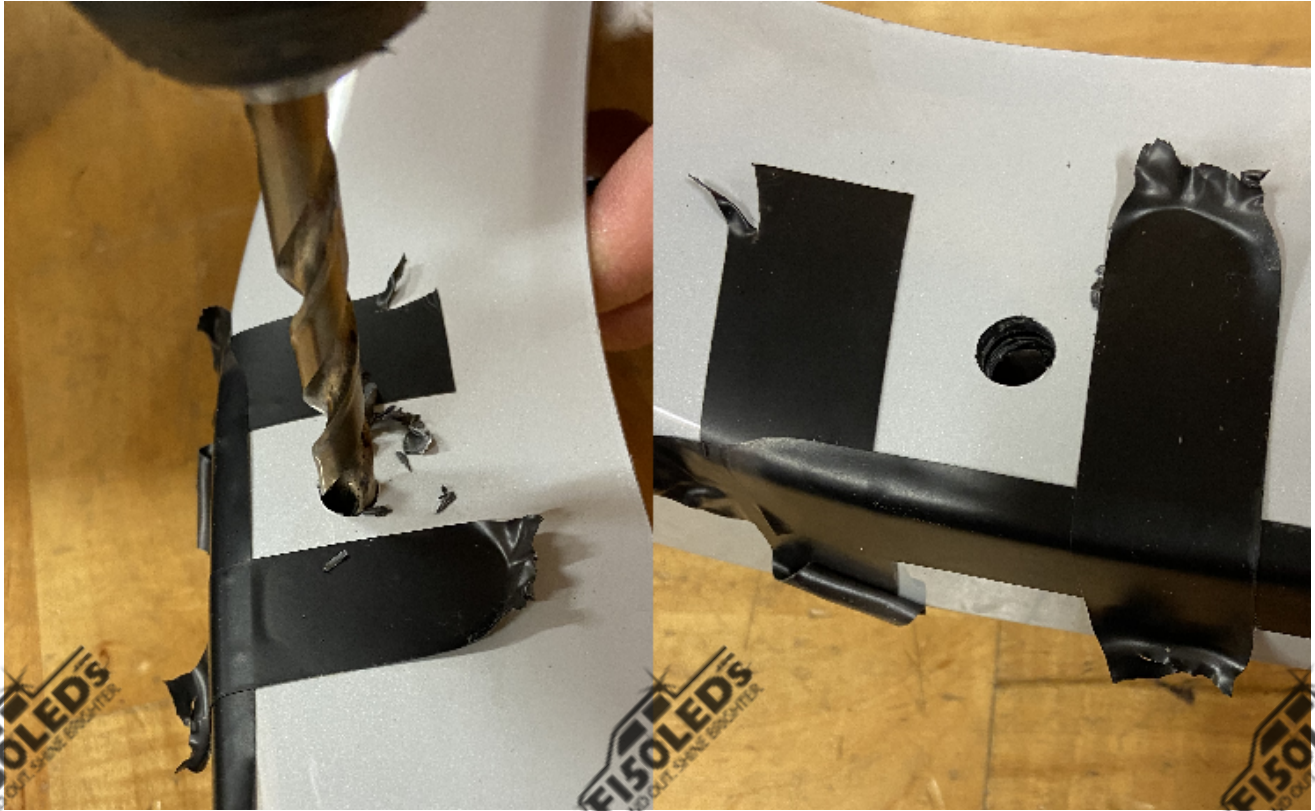


After lining this bracket up, take a sharpie or marker and marker the hole.



STEP 5

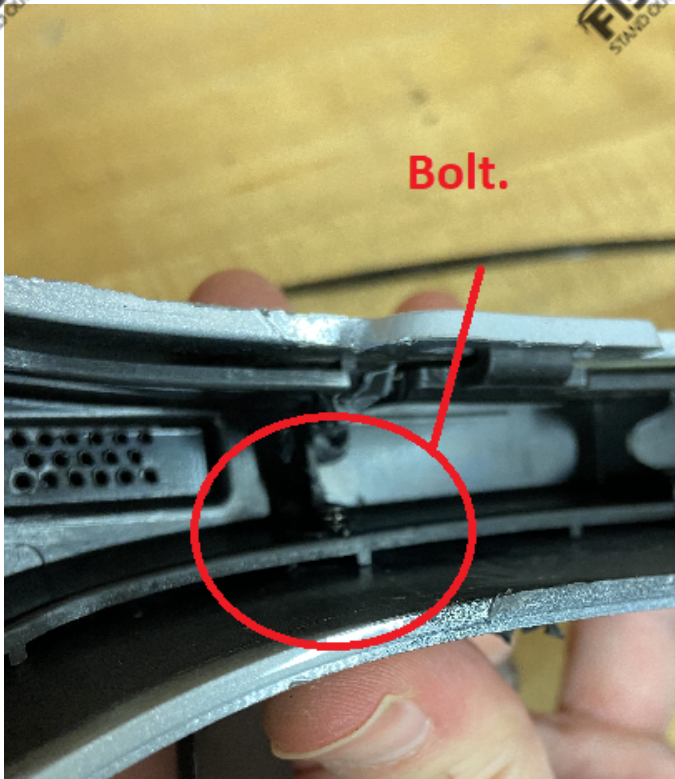
Drill the holes for the brackets using a size 5/16 drill bit.



STEP 6

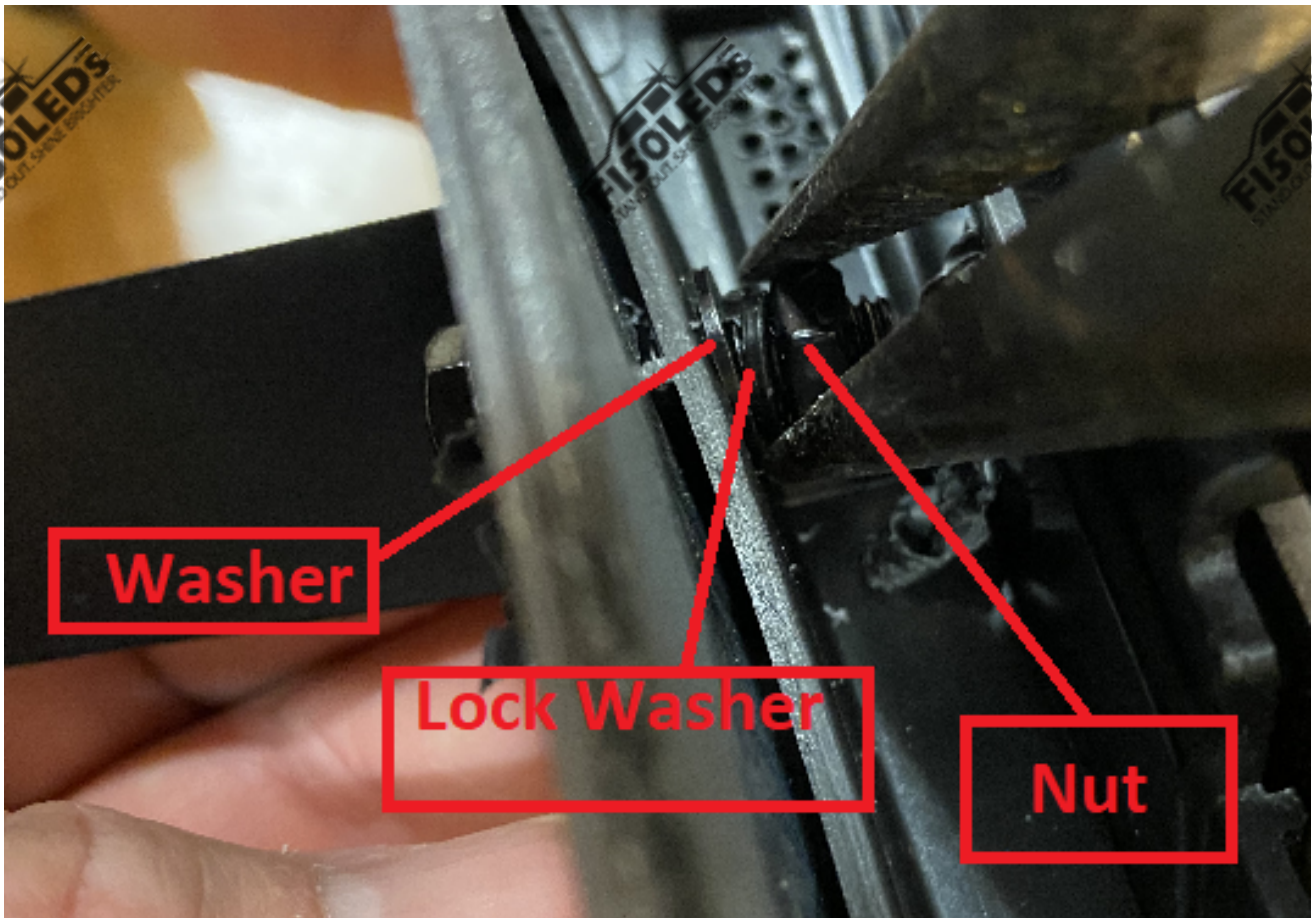
Mount the brackets to this valance using the included hardware.

Slide the longer bolt through the bracket and the hole that was drilled then place the included washer and lock washer on the bolt then screw the nut to the bolt.



It is a tight opening so we recommend using some needle nose pliers to help be able to work in this tight space.

Tighten this bolt using a 10mm wrench to ensure the bracket is secure to the valance.



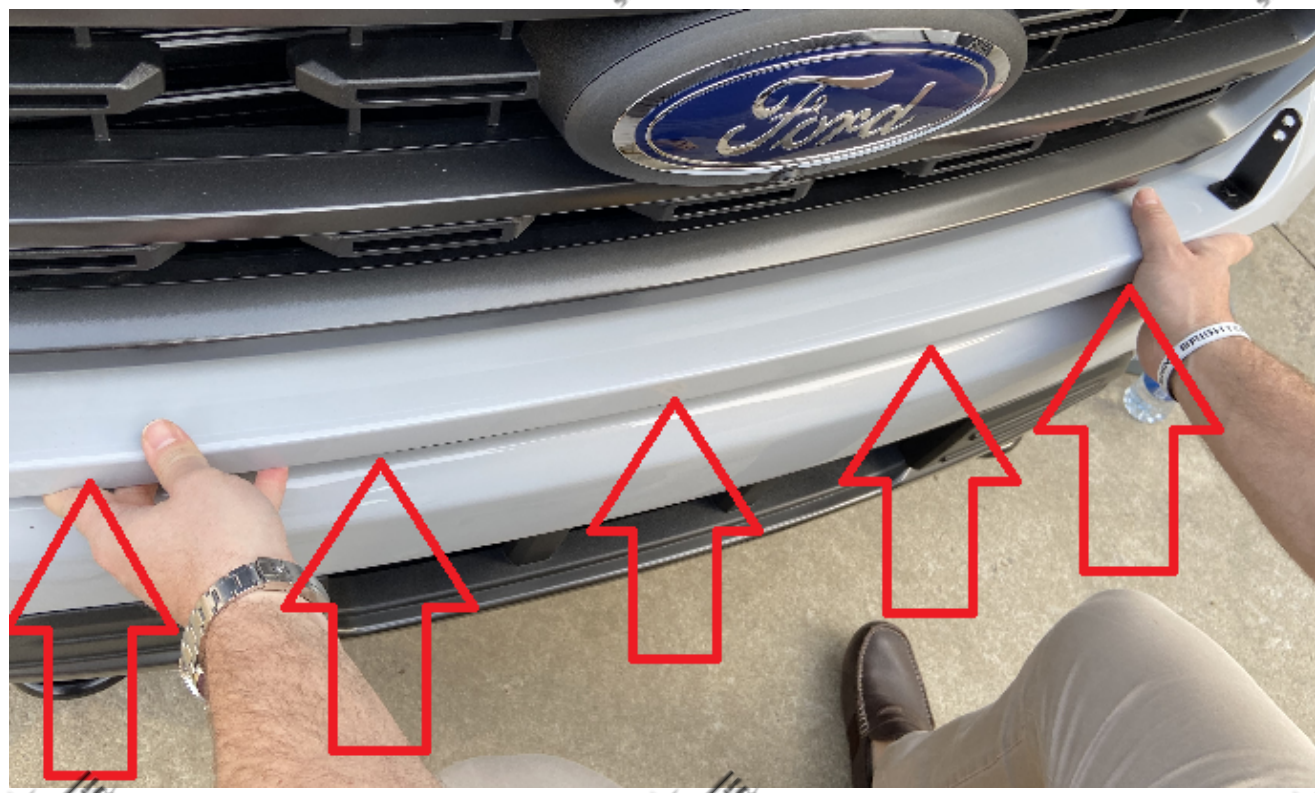
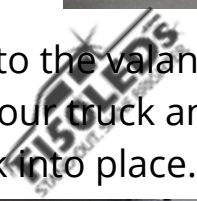
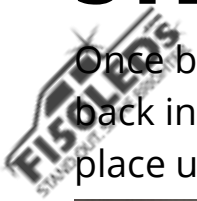


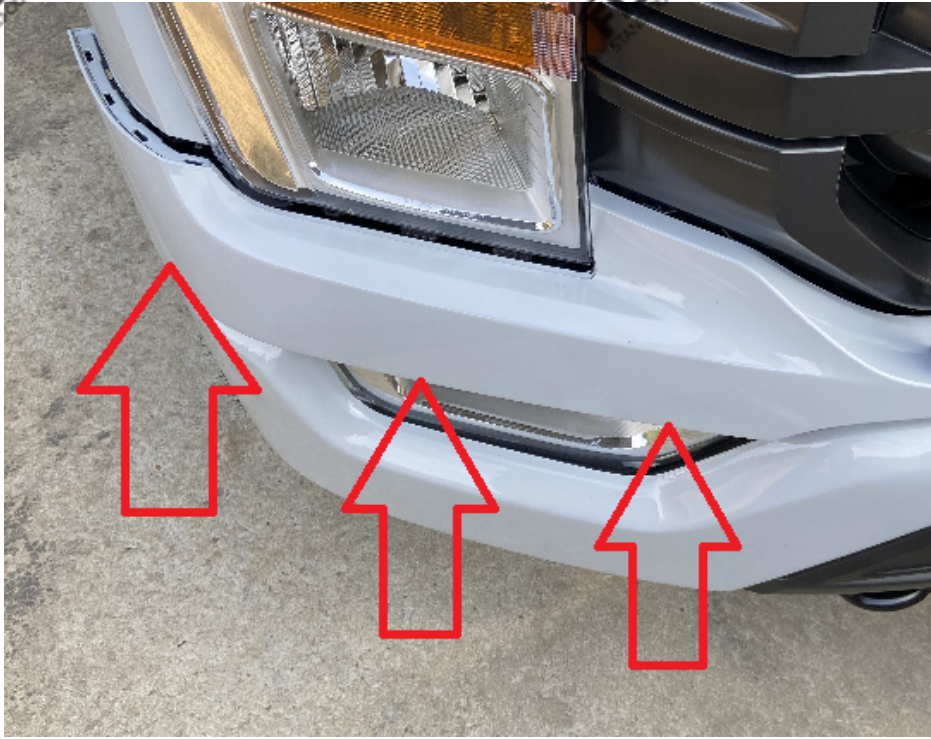
It should look like this when you're finished mounting. →



STEP 7

Once both brackets are secured to the valance, line the tabs of the valance back in front of the opening on your truck and push the valance back into place until you here the tabs click into place.





Once it is back into place screw the two 7mm screws back into each side of the truck.

STEP 8

Mount your bar to the truck by sliding the lock washer then washer onto the small bolt and use the included allen wrench to tighten this bolt to secure the bar to the bumper.

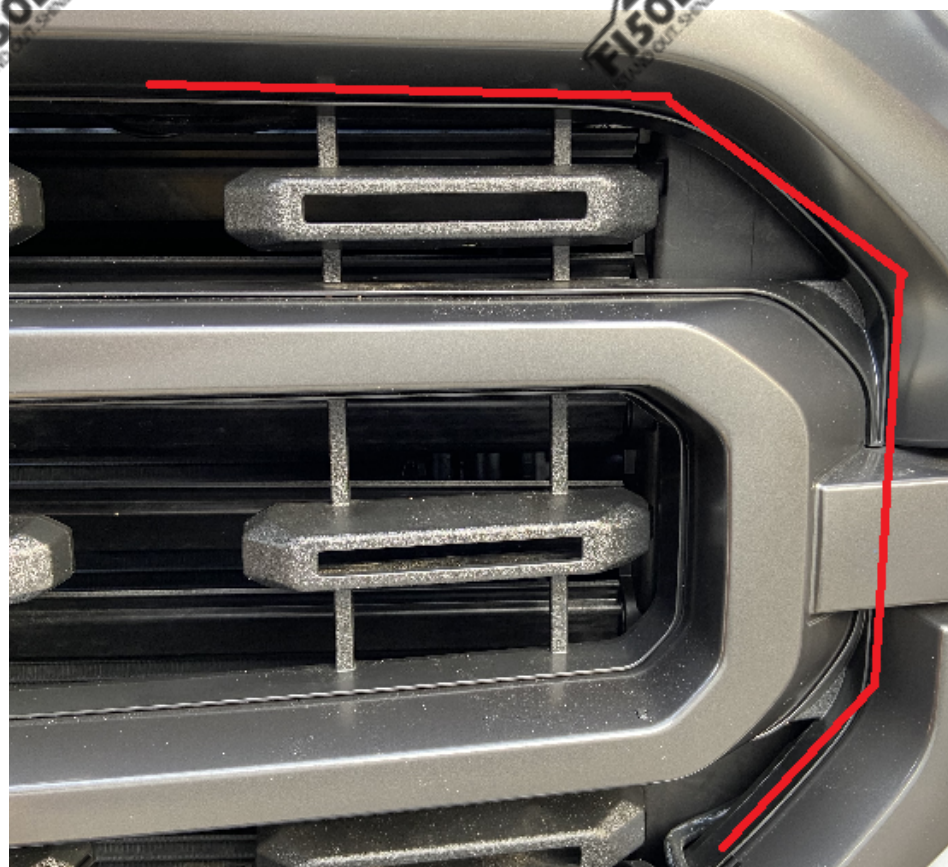
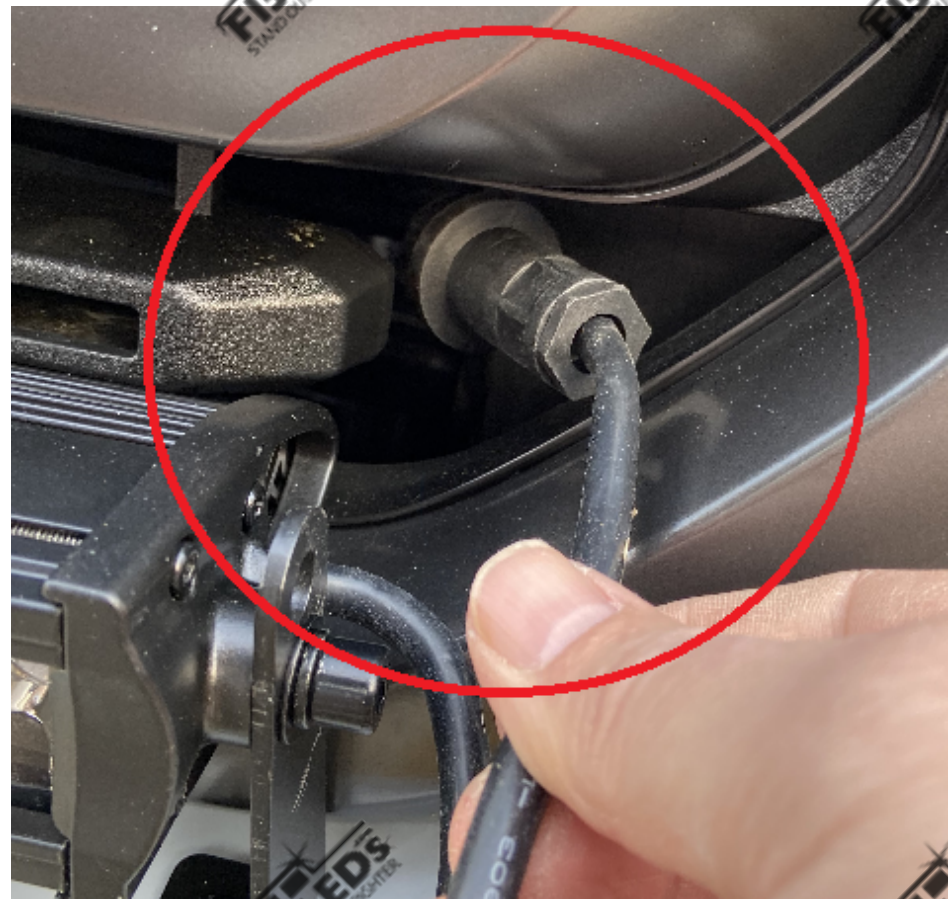




STEP 9

Running the power wire up to the engine bay.

We recommend running this wire through the circled area below.

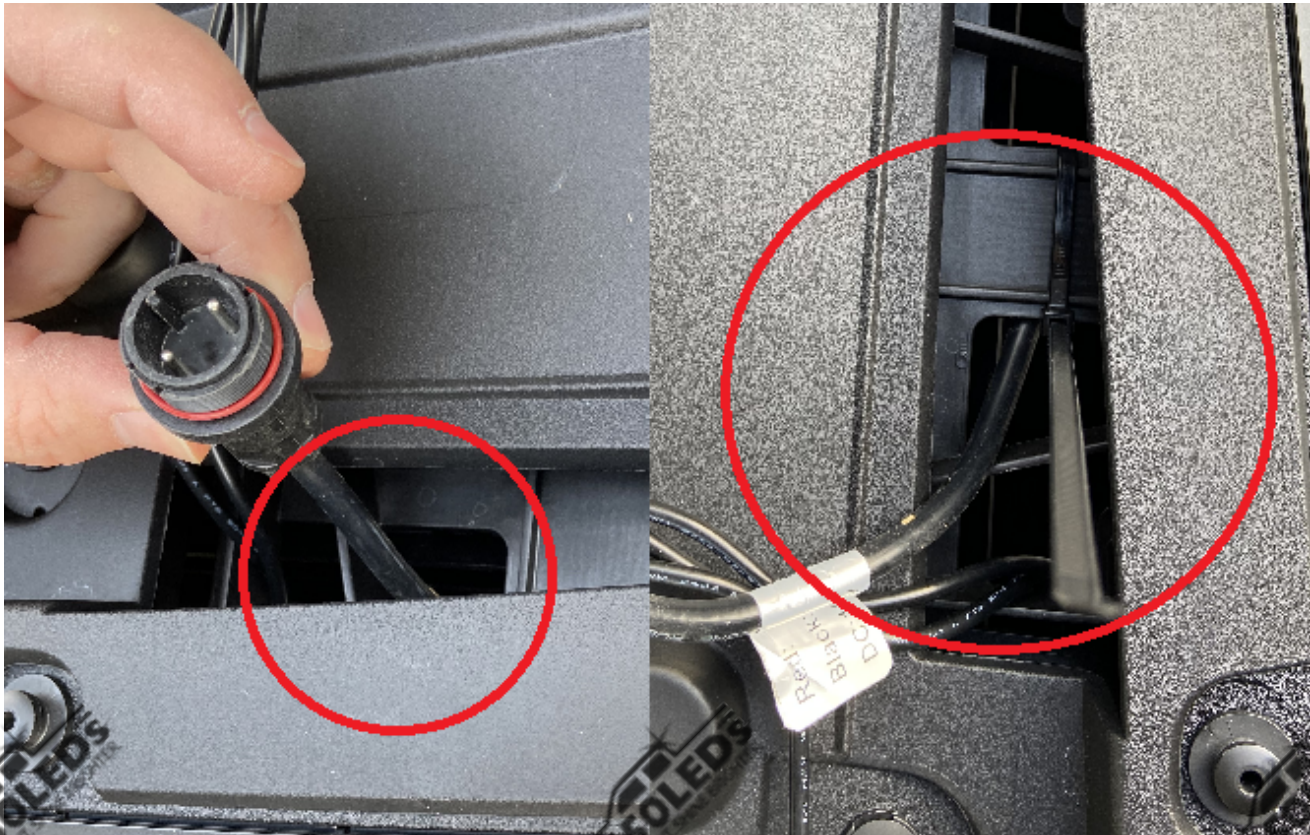


Then run the wire up the grille tucking it where the red line is in the photo so that the wire is not showing hanging in the grille.





Then pull the connector through the opening at the top of the grille and zip tie it so that the wire does not move and fall behind the grille.



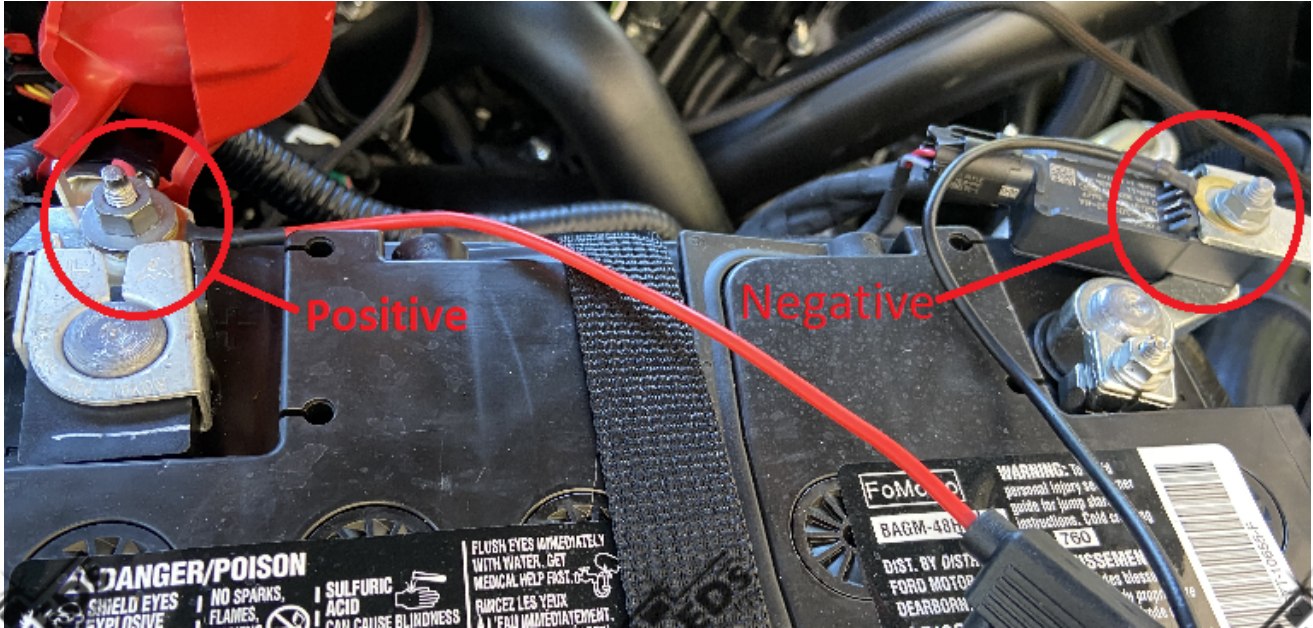
STEP 10

Connect your wiring harness to your battery.





Remove the nut on the positive terminal of your battery and slide the red positive terminal ring over the bolt then tighten the nut back into place. Remove the nut on the negative terminal of your battery and slide the black negative terminal ring over the bolt then tighten the nut back into place.



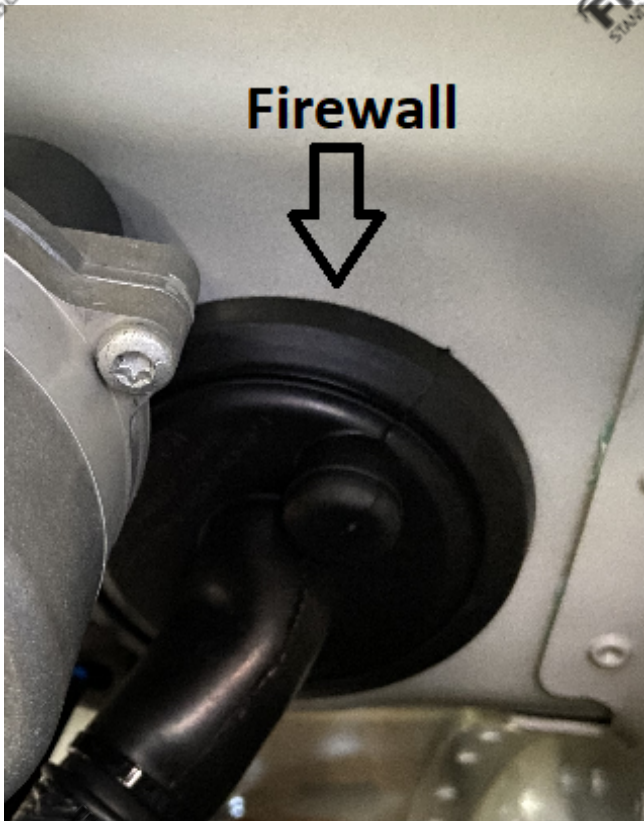
Then connect the female end from the harness to the male end coming from the light bar.



STEP 11

If you are running a switch into the cab, run the switch past the rubber grommet seen in the photos below. Once you pass the switch through this grommet it will appear at the driver's side footwell. Pull the switch through and mount it on your dash area that you prefer most.

We recommend disconnecting the switch from the harness and sending the white connector through the fire wall.



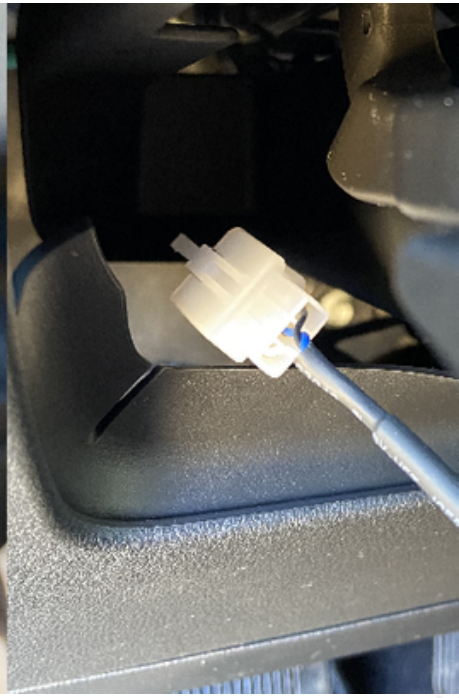


STEP 12

Once you pass the switch through this grommet it will appear at the driver's side footwell. Pull the switch through and mount it on your dash area that you prefer most.



Now run the male connector from the switch in-between the steering wheel and the plastic piece seen in the photo.

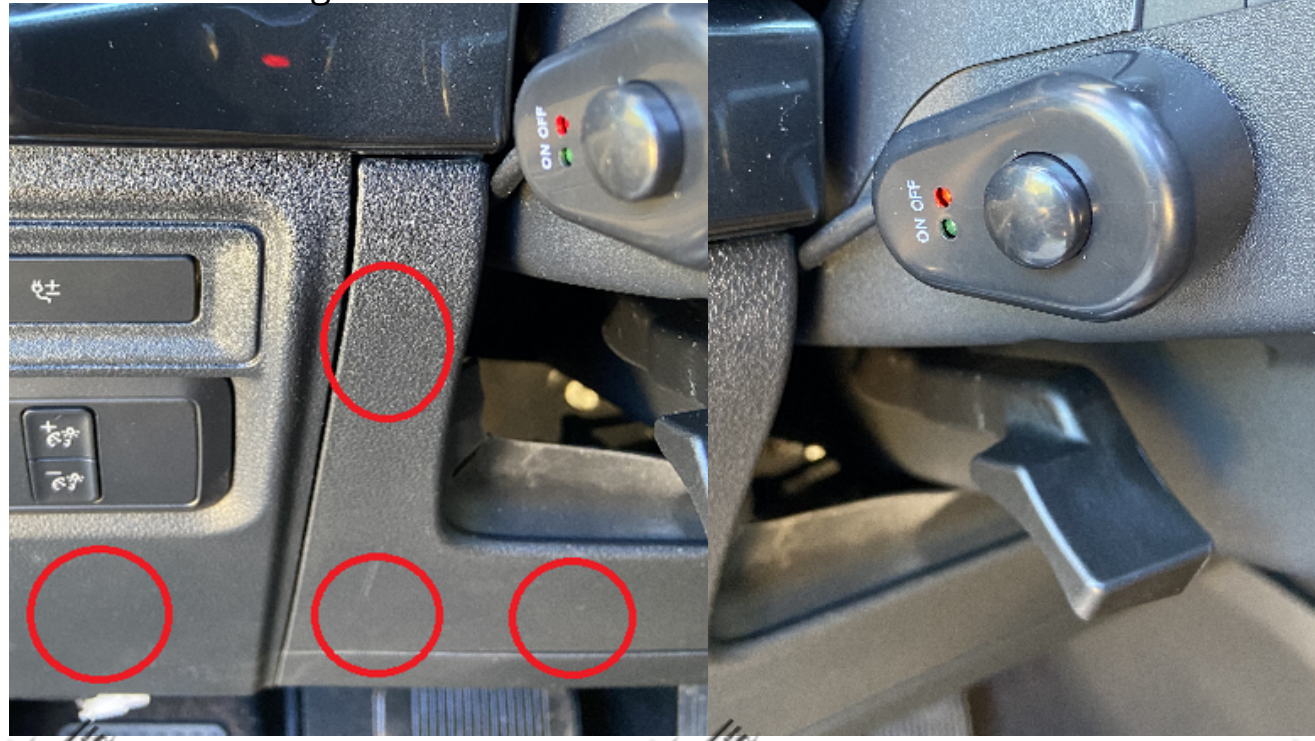


Once you have done that connect your switch to the harness.



Now mount your switch on your dash in your preferred location.

Possible mounting locations:





STEP 12

Enjoy your new 180W Paladin Series LED bar from F150LEDs.com!



Text for support: 706-214-2618

Visit our site to chat: www.F150LEDs.com
or email CustomerSupport@F150LEDs.com

