

BRONCO SPORT 120W LOWER INTAKE BAR INSTALL

STEP 1

Open your package and lay out all included parts, ensure you have everything from the image below.



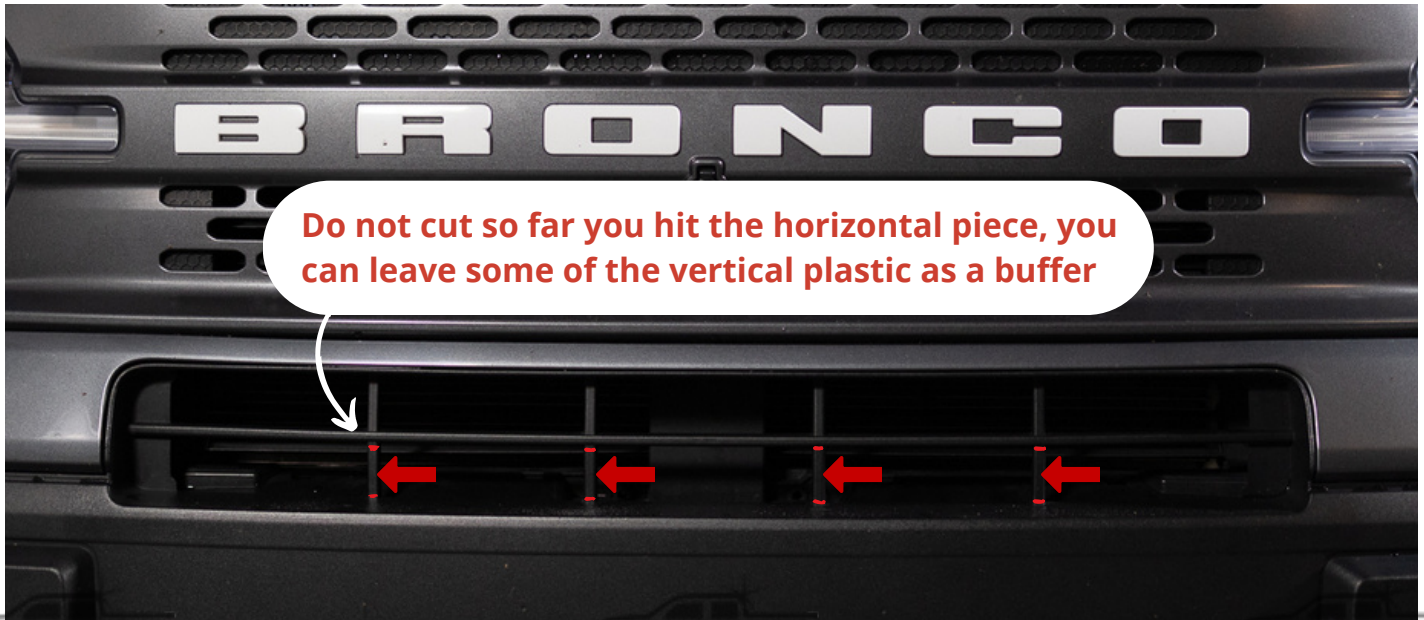
STEP 2

Gather the tools needed for this install - as listed below.

- 1) 13mm wrench (not a socket as there is limited space)
- 2) 14mm socket or wrench
- 3) 10mm socket
- 4) 7mm socket
- 5) 5/16 drill bit
- 6) Rotary Tool, Oscillating Tool, or Small Hand Saw
(we used a Dremel Rotary tool circular blade attachment, then smoothed cuts with sanding attachment)
- 7) ***Optional*** long needle nose pliers for feeding wire/ getting nuts on bolts behind the bracket

STEP 3

Using a cutting tool (rotary, oscillating, or hand saw) you will cut bottom row of vertical trim pieces shown below.



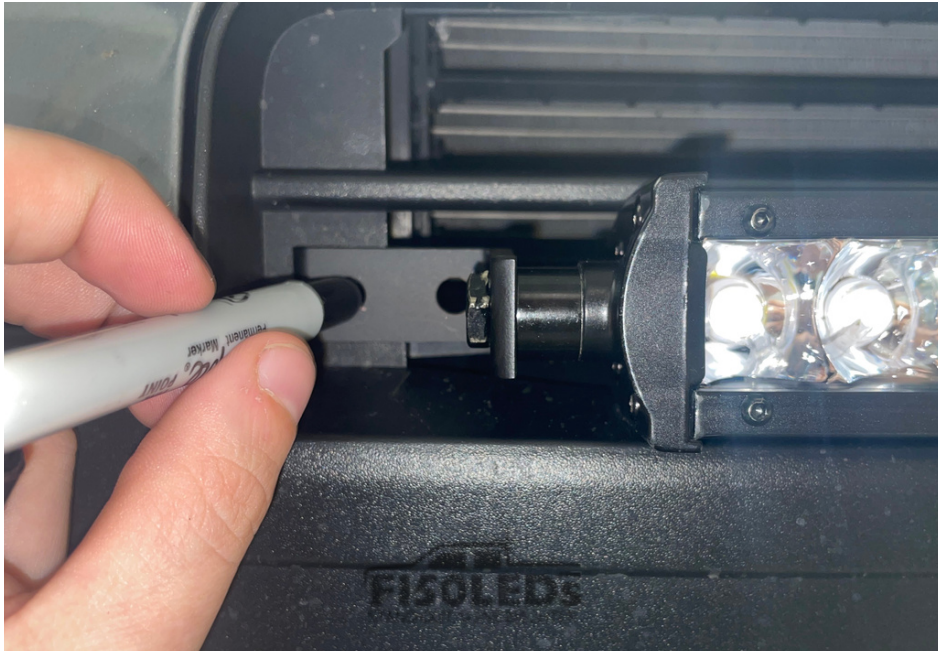
STEP 3 - Continued

Once you have made all cuts and removed the vertical pieces, you should clean up the lower intake to your satisfaction.



STEP 4

Now you will mark and drill holes to mount your brackets. Attach both brackets to your bar then center your bar in place and use a sharpie to mark drilling locations.

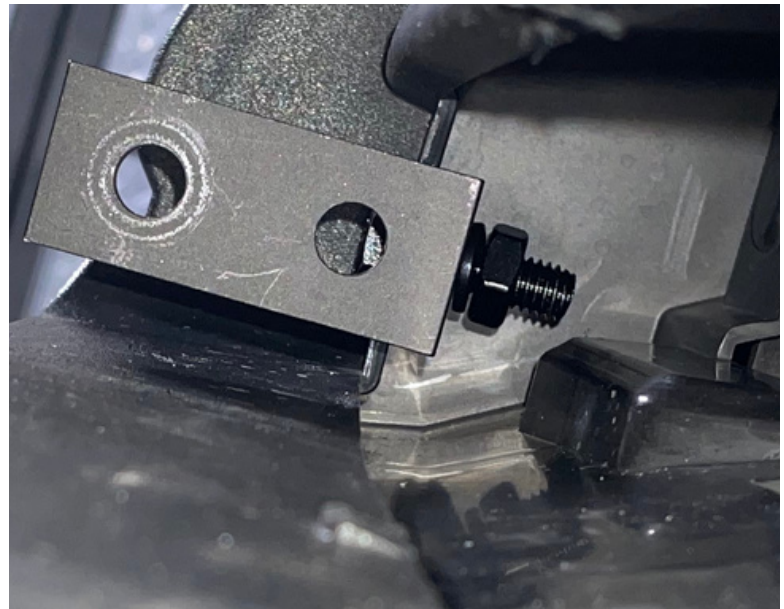


Once marked, use a 5/16 bit to drill your hole

Place your first Heavy L bracket in place behind the surface you drilled then run your bolt through it.



Carefully place a washer, then lock washer, and finally screw on the nut. *BE PATIENT, IF YOU DROP A PART IT WILL BE LOST*

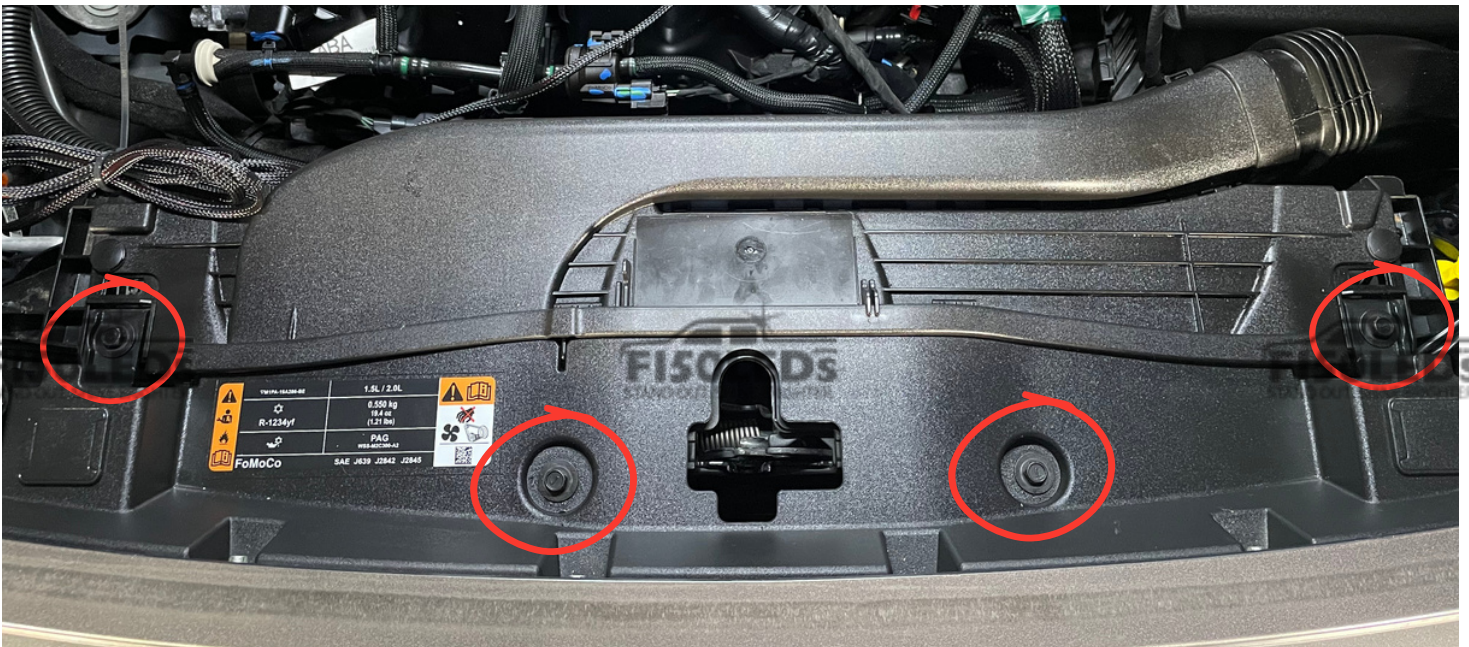


Repeat on the other side to attach the second bracket

STEP 5

Next you will need to remove the shroud shown below from your engine bay area in order to run your bar cable to the battery. *be careful not to drop any screws into the engine bay*

Use a 10mm socket to remove the circled screws

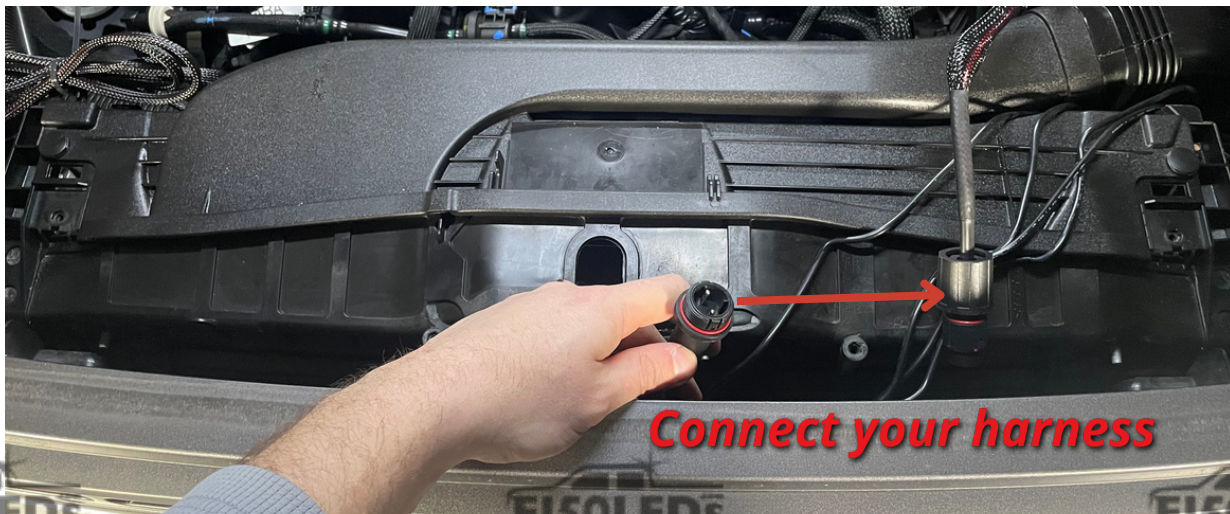


Use a 7mm socket to remove the circled screws



STEP 6

Once you've removed this shroud, run your bar wire are shown below



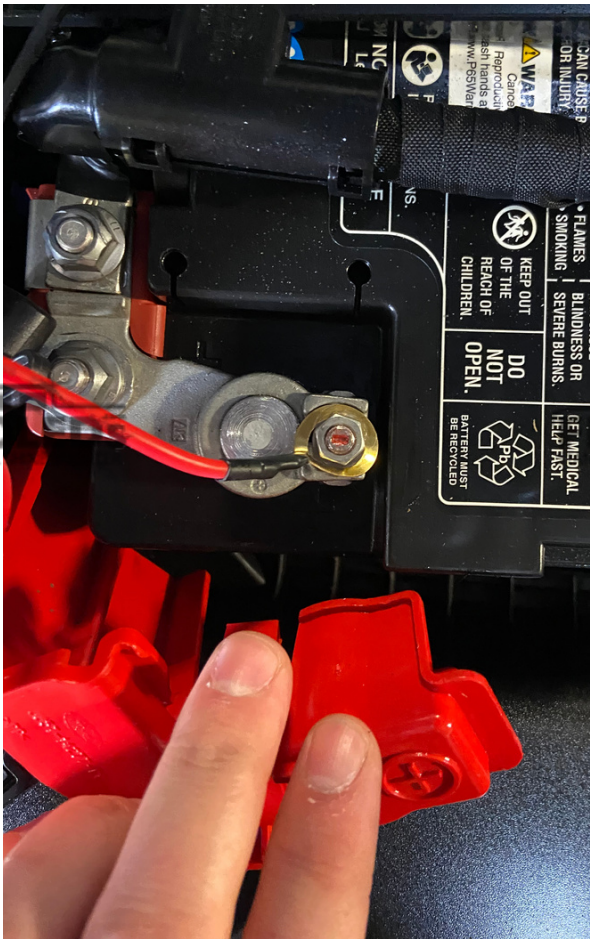
STEP 7

Reinstall the removed shroud and run your harness toward the battery



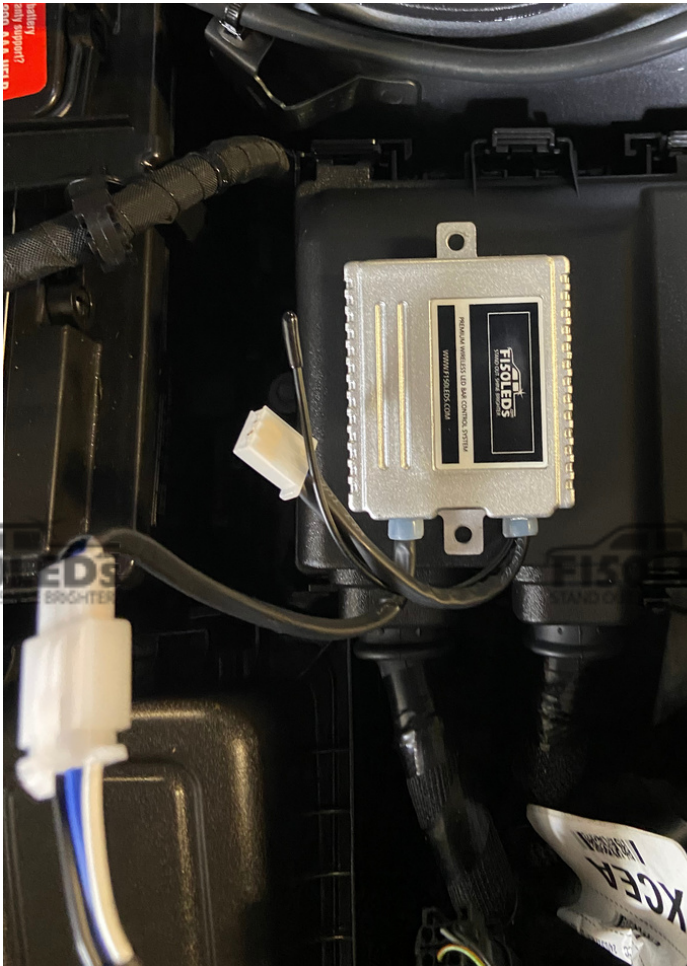
STEP 8

Attach the terminal rings from your harness to the battery terminal. Red to red and black to black



STEP 9

If you selected the wireless harness option, peel back the 3m backing and place it as shown. Then unplug the wired switch and plug your harness into the wireless receiver.



STEP 10

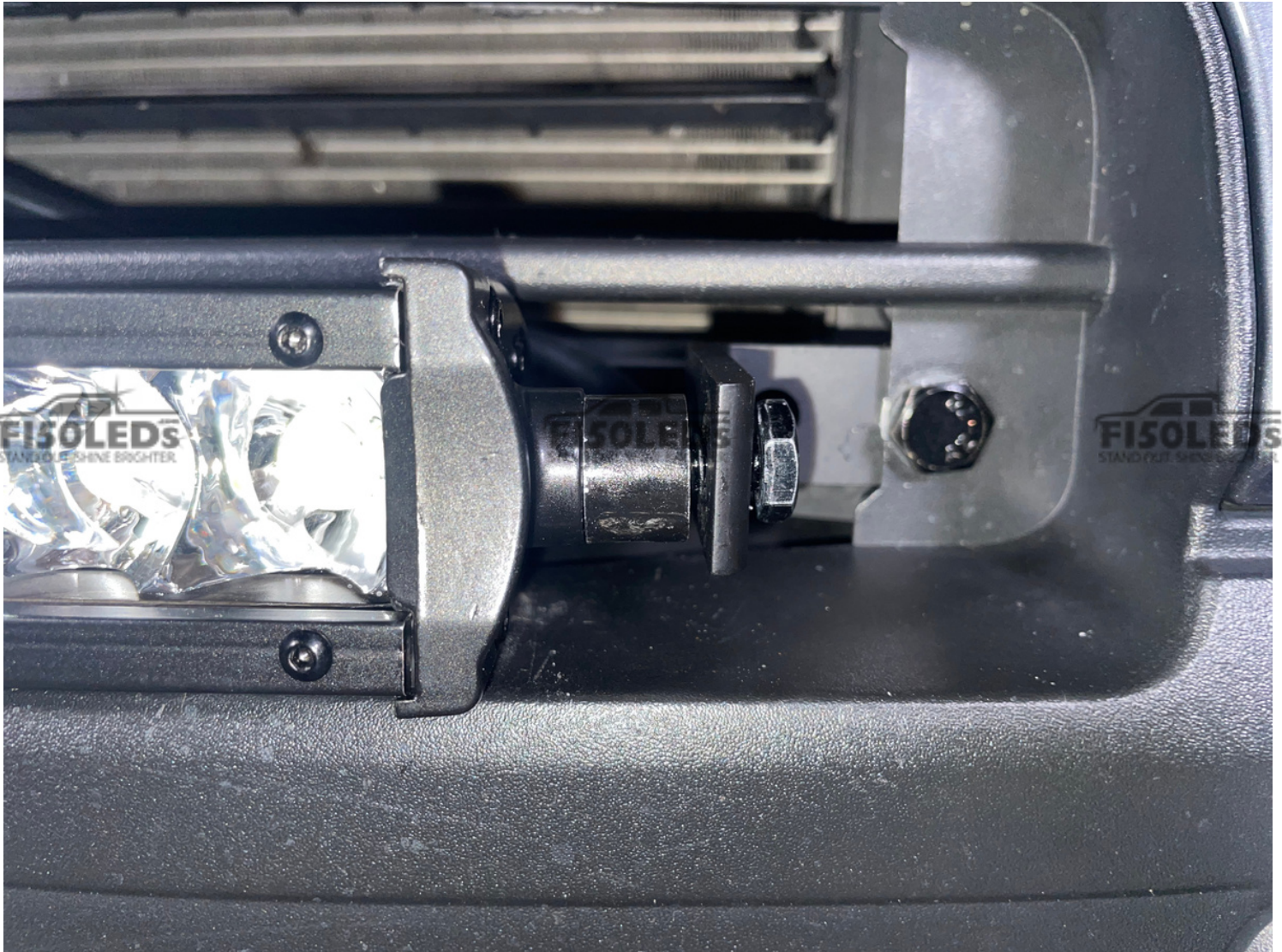
If you do not have the wireless harness, you will need to feed your switch through the side vent area, under the weather strip, and to your desired placement in the engine bay.



Using a plastic pry tool you can tuck the wire in to the seam shown by the arrows above.

STEP 11

Attach your bar to the brackets as shown, you can use the extra spacers and lock washers if needed.



STEP 12

Before tightening completely, adjust the bar to your desired angle, then enjoy your light bar!



Text for support: 706-214-2618

Visit our site to chat: www.F150LEDs.com
or email CustomerSupport@F150LEDs.com