

2015+ CREE XPG-2 LED FRONT MAP LIGHTS INSTALLATION GUIDE

STEP 1

Press the interior light button to off.



STEP 2

Remove the overhead assembly by working your way around the housing and gently applying force to pry housing away from the headliner.





STEP 3

Disconnect wire harness plugs.

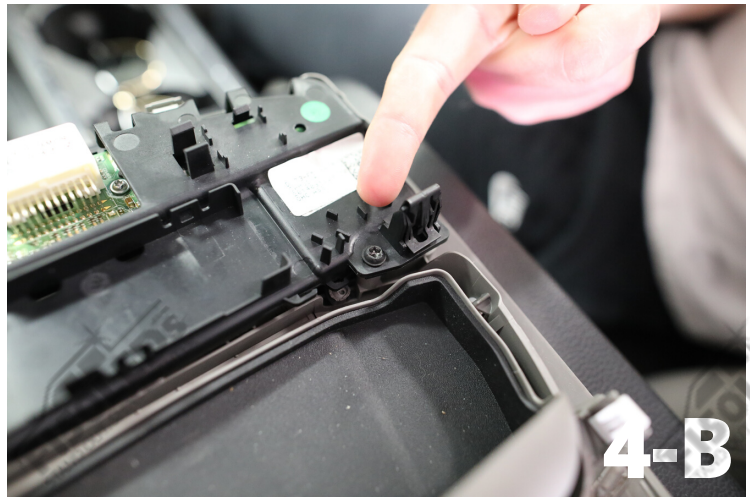


STEP 4

Remove two bolts (use a torx size 20 screwdriver).



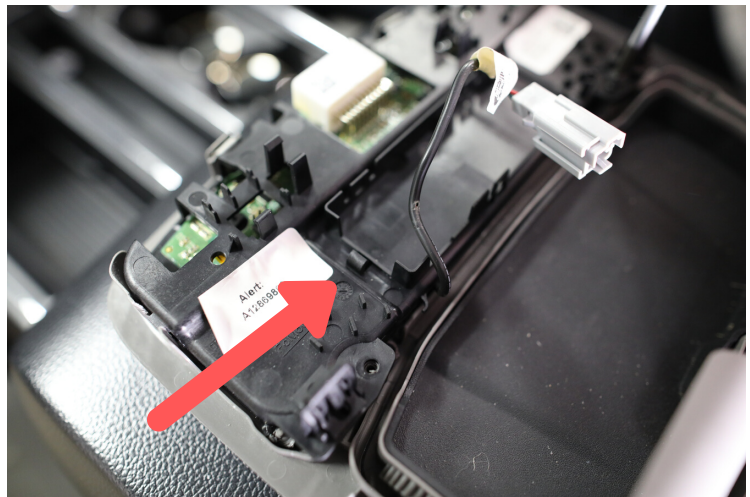
4-A



4-B

STEP 5

Pull wire away from plastic covering.



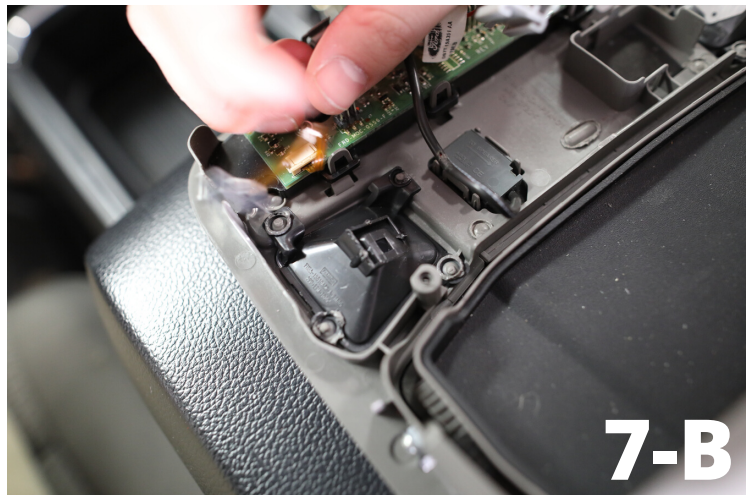
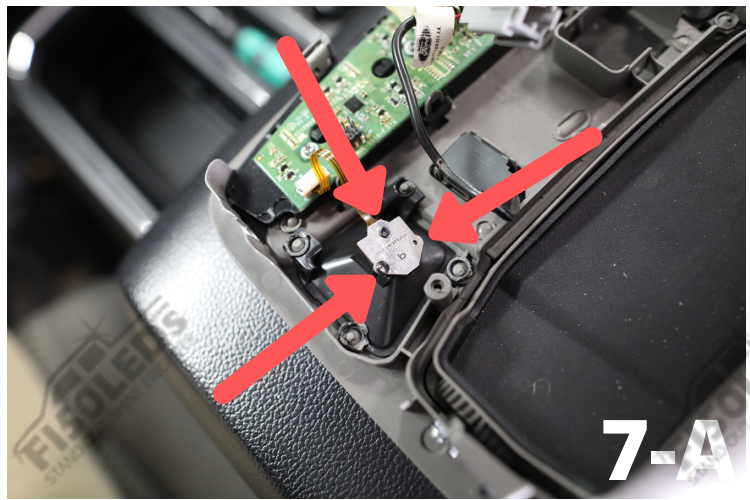
STEP 6

Gently pry black plastic covering away from assembly by prying it away on both sides (one side at a time).



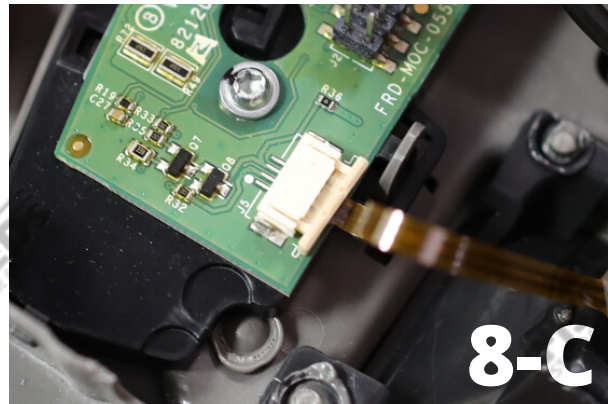
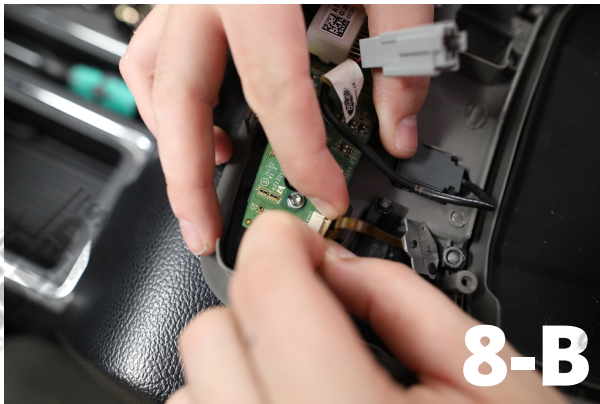
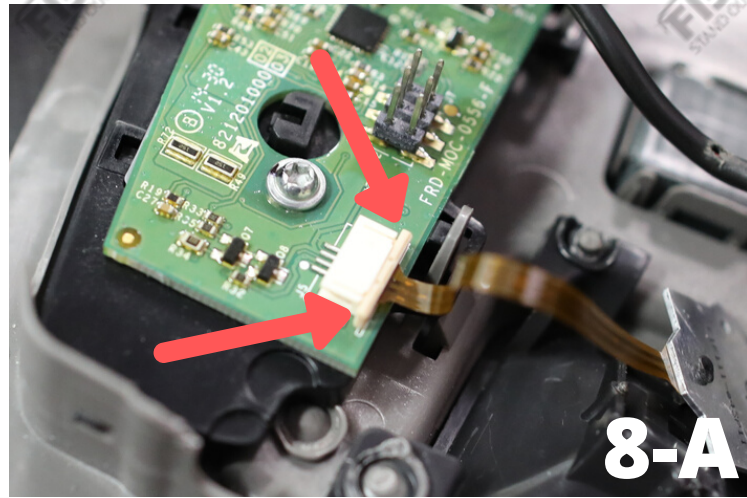
STEP 7

Gently pull the original light away from the assembly. There are three plastic 'pins' that hold the unit in place. You can remove the tops or pull them directly off. They will not be used again.



STEP 8

With the light disconnected from the assembly, now disconnect the ribbon from the PCB board. Do this by gently pulling on both sides of the white tab connector. The top piece will slide out allowing the ribbon to be removed. This white piece can fall out so be careful. It can easily be put back into place if it does fall but you don't want to lose it.



STEP 9

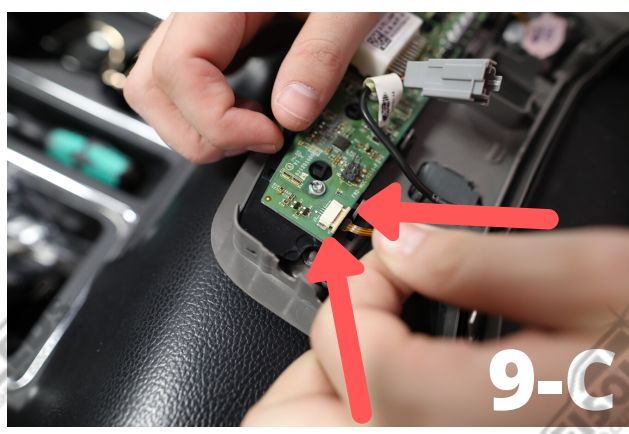
Install the ribbon from your new F150LEDs light. **The gold side of the ribbon faces the green PCB board.** The black side faces away from the board. Once the ribbon is in place push the white tab into place to lock it down.



9-A



9-B



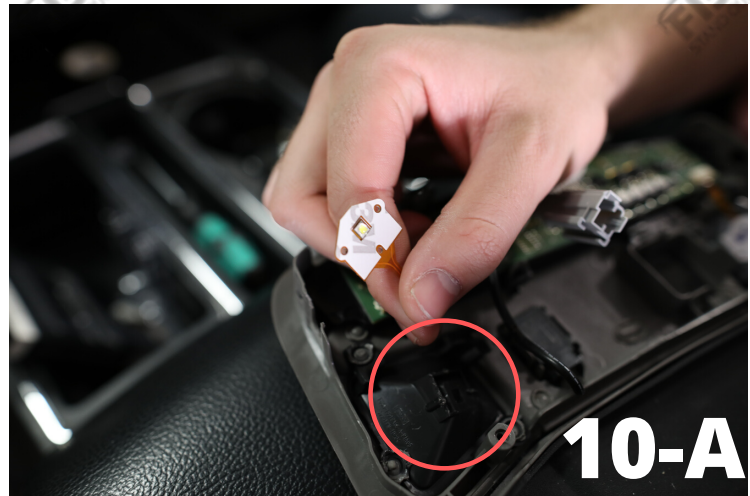
9-C



9-D

STEP 10

To install your new F150LEDs light ensure that the mounting location is even without any rough edges or protruding 'pins'. Then remove the 3M adhesive cover and apply the light to the assembly. Hold in place for 30 seconds to ensure a strong hold.



Now repeat for the other side and reverse the install of your assembly. Turn the lights back on and you are ready to go!



Text for support: 706-214-2618

Visit our site to chat: www.F150LEDs.com
or email CustomerSupport@F150LEDs.com