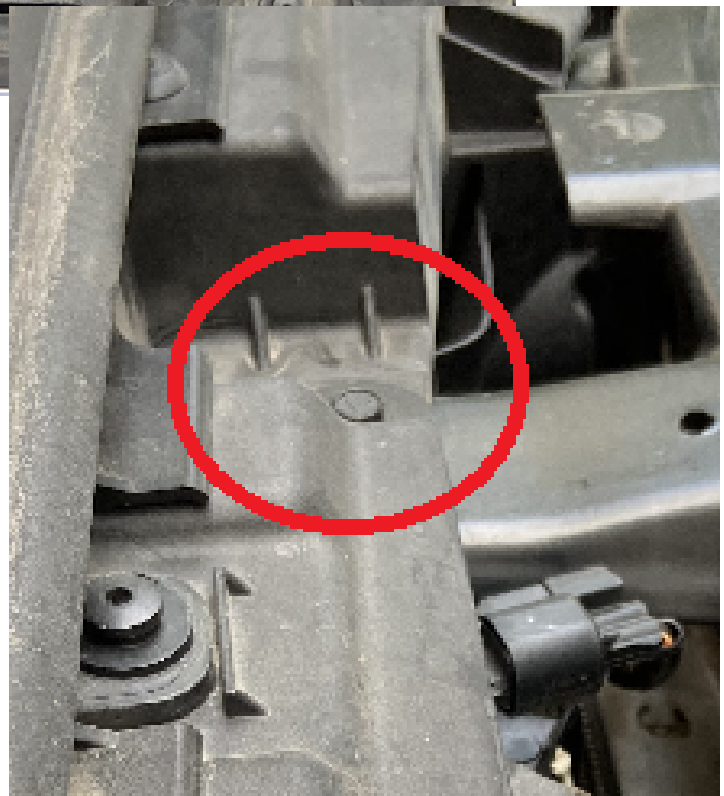
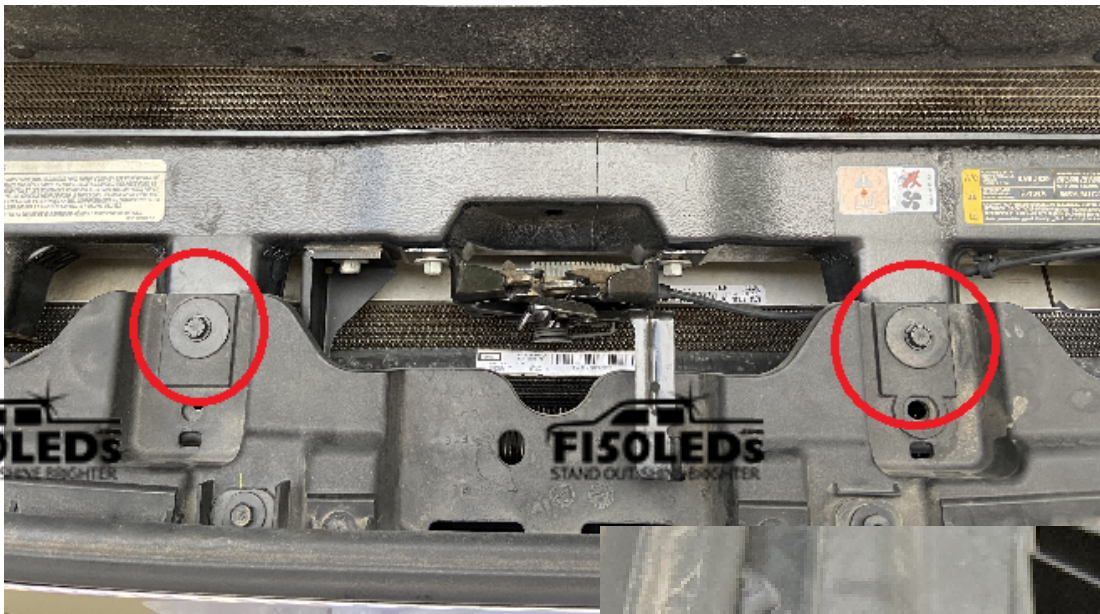


2011-2016 SUPER DUTY GEN 2 RAPTOR GRILLE KIT INSTALLATION

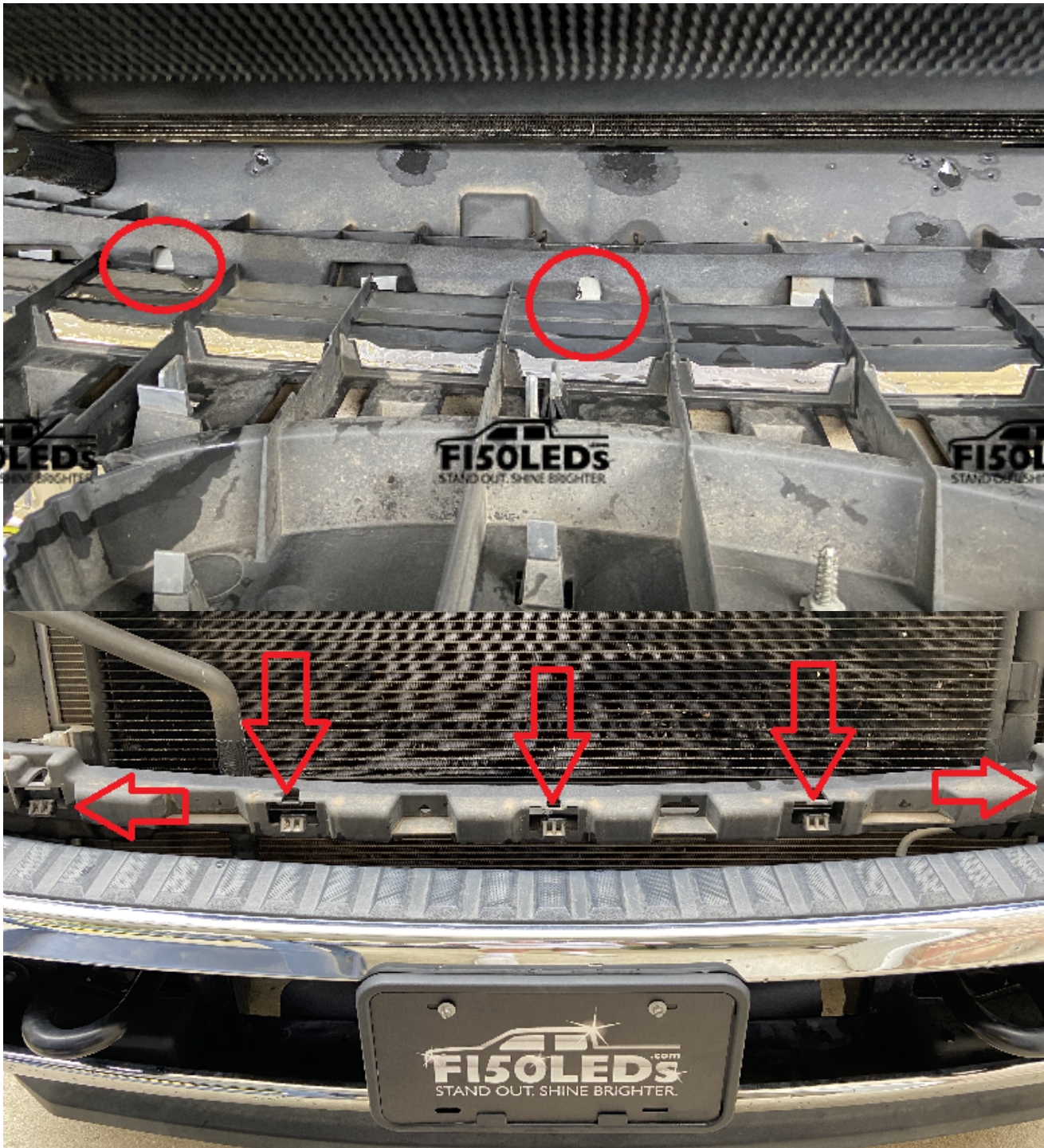
STEP 1

Remove four size 10mm size bolts on the top of the grille. Then you will be able to pull back on the top of the grille.



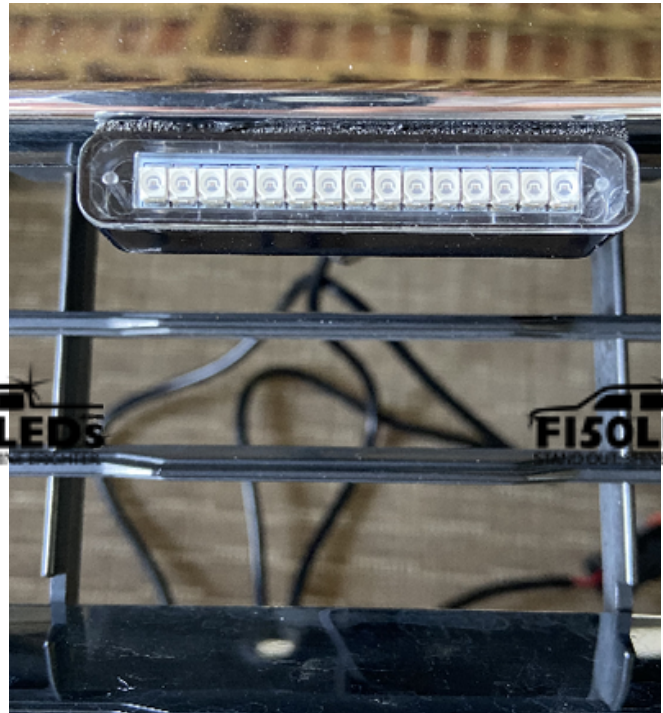
STEP 2

Pull back on the top of the grille and look down behind it and there are about 4-5 tabs at the bottom of the grille. Take a long flat head screwdriver to push down on the tabs and they will release allowing the grille to be removed. Place the grille on a surface that it will not get scratched.



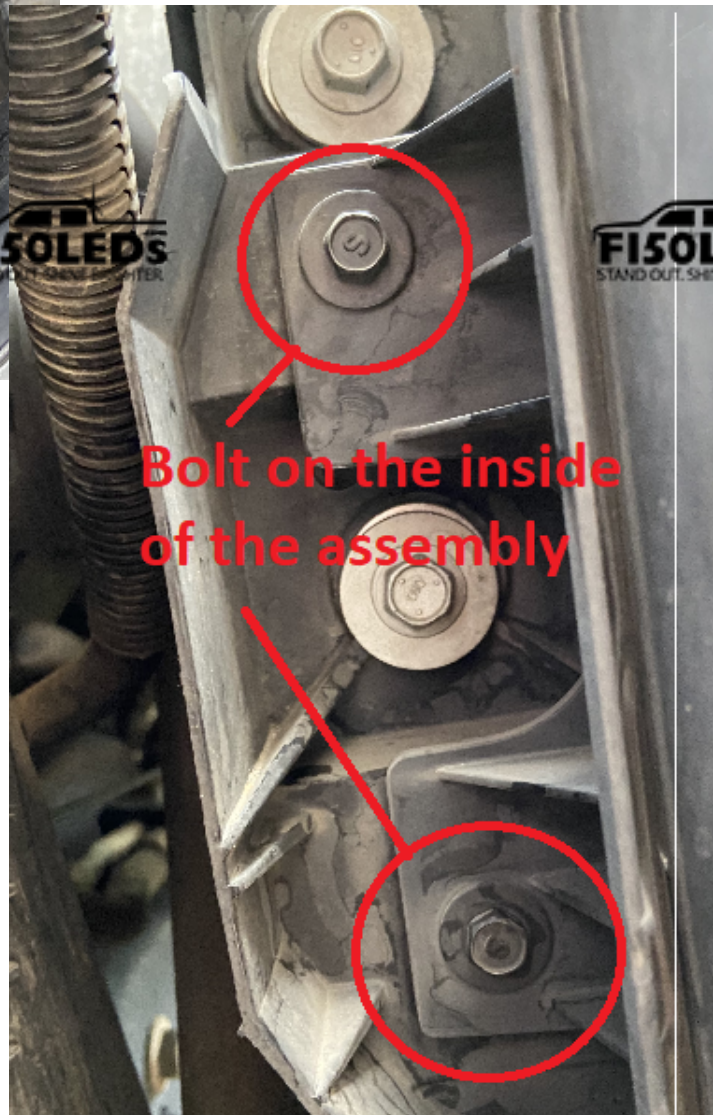
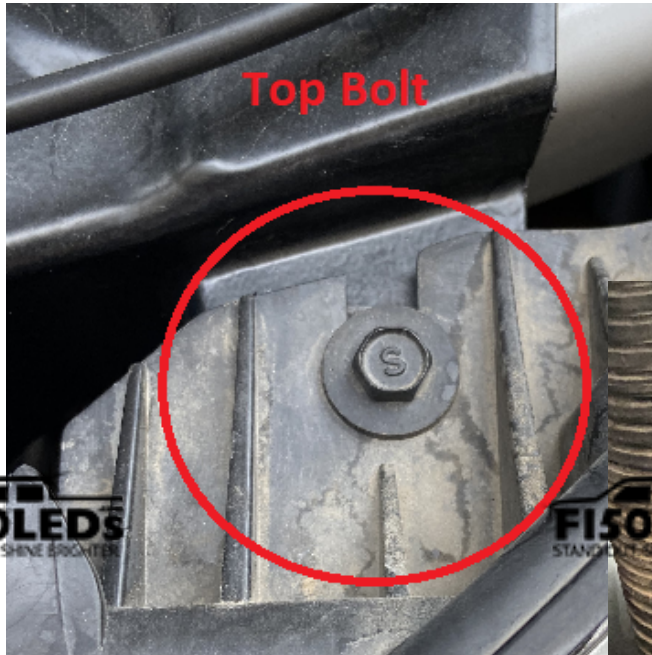
STEP 3

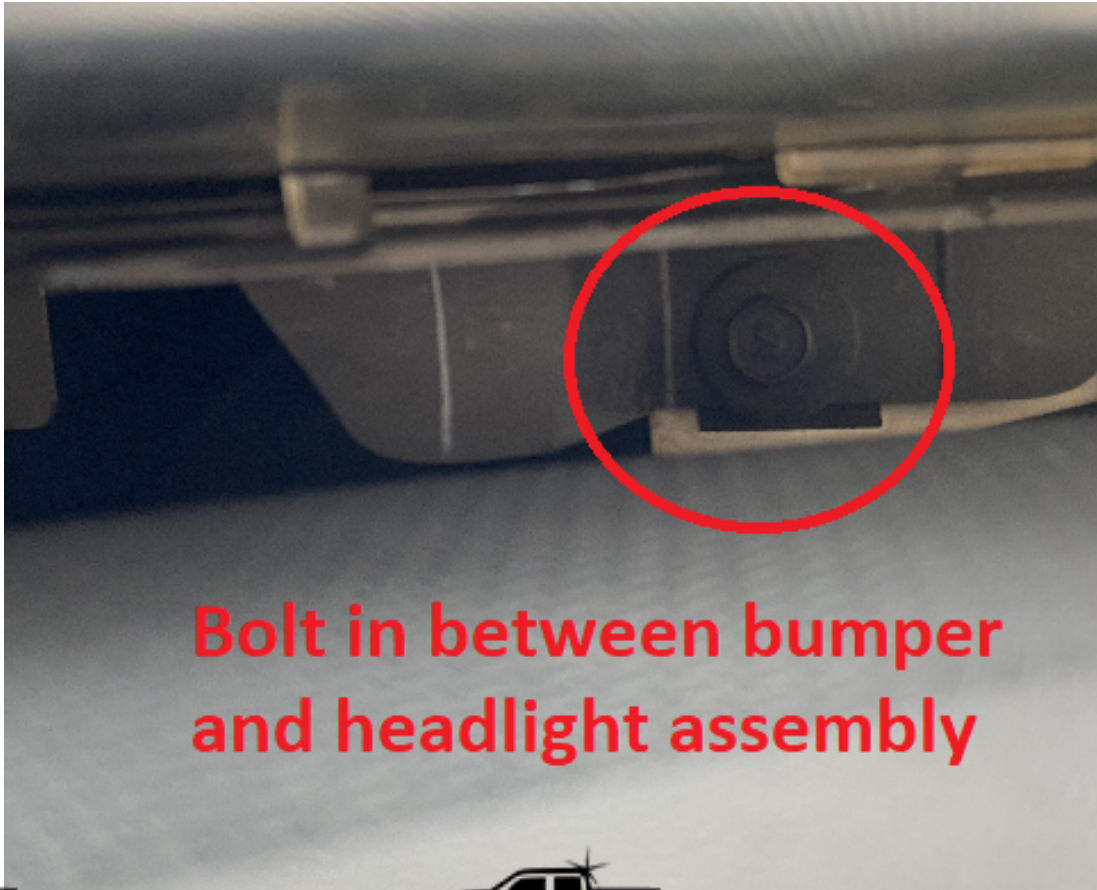
Now that the grille is removed take the female end connector coming from the light and slide it through the opening of your choosing (We decided on the center opening then we skipped to openings on each side and used that opening) After sliding all three (or four) lights through your grille, stick the auto grade 3M adhesive to each of the lights then mount them to your desired location by pressing them on your truck and applying firm pressure for 1-2 minutes.



STEP 4

Remove four size 10mm bolts to be able to release the headlight assembly. One bolt is located at the top of the housing, two are located behind the rubber covering on the inside of the headlight and the last one is located under the headlight assembly that is in between the bumper and headlight assembly.





**Bolt in between bumper
and headlight assembly**

STEP 5

Pull the Headlight assembly away from the truck and it will expose the Front marker socket



Front marker socket

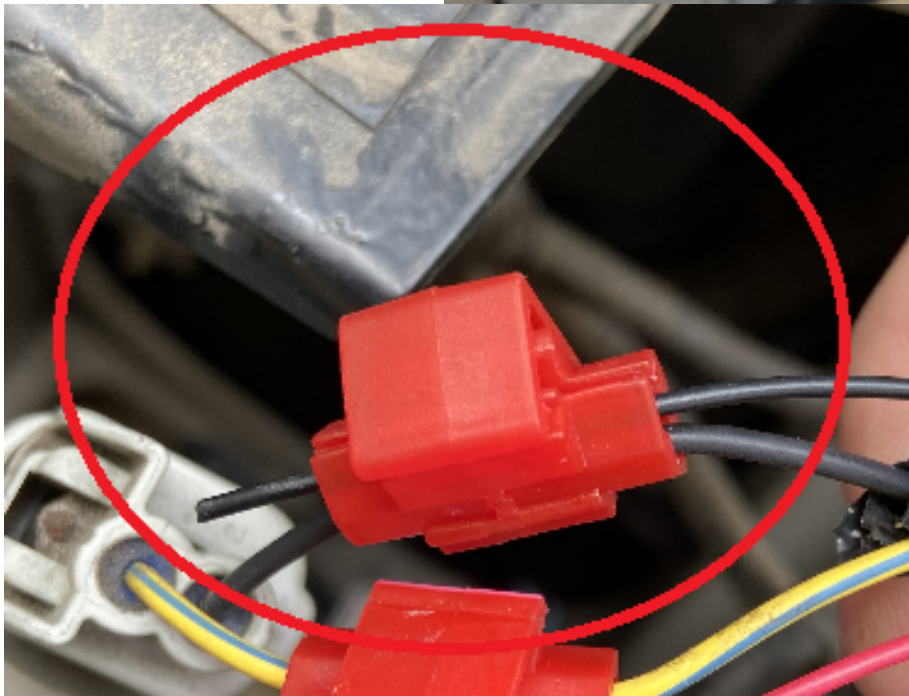
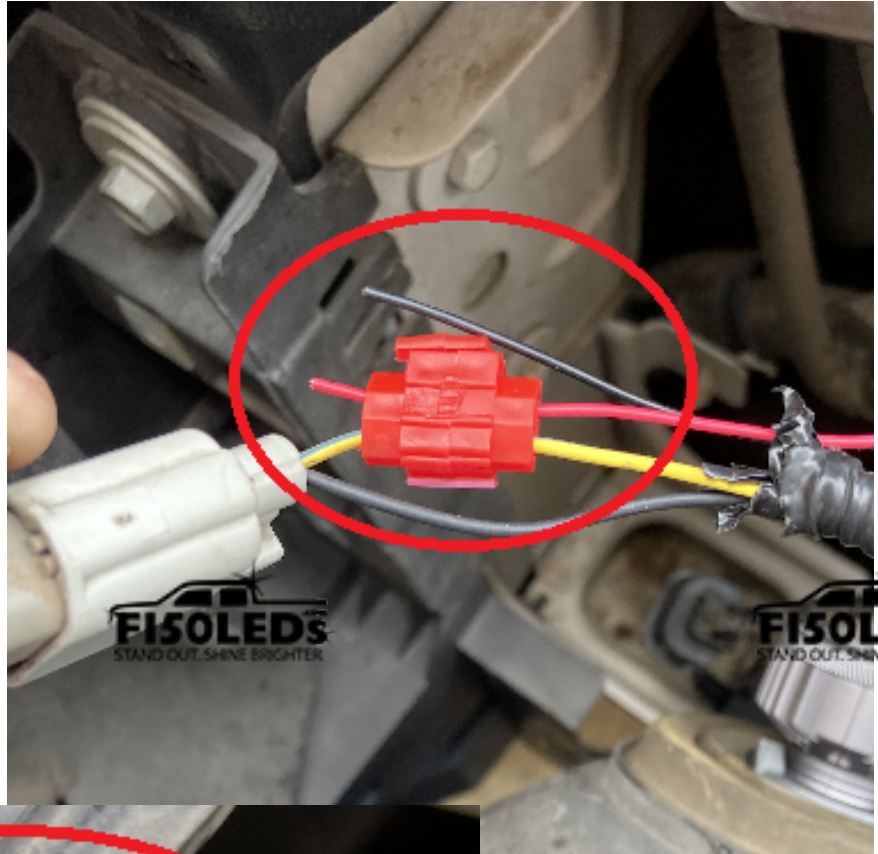
STEP 6

Use a counterclockwise turn to release the socket from the housing. Then take a box cutter and carefully cut the sheath that is covering the wire so that the wires are exposed.

STEP 7

Take the red wire from the power harness and connect it to the yellow/grey wire coming from the front marker socket.

(Wire color may vary)



Now take the black wire from the power harness and connect it to the black wire coming from the front marker socket.



****We recommend plugging in one of the lights to the power harness to test to make sure there is a solid connection and the kit is working before reinstalling the grille. ****

STEP 8

Reinstall the Front marker socket using a clockwise turn then reinstall the headlight assembly.

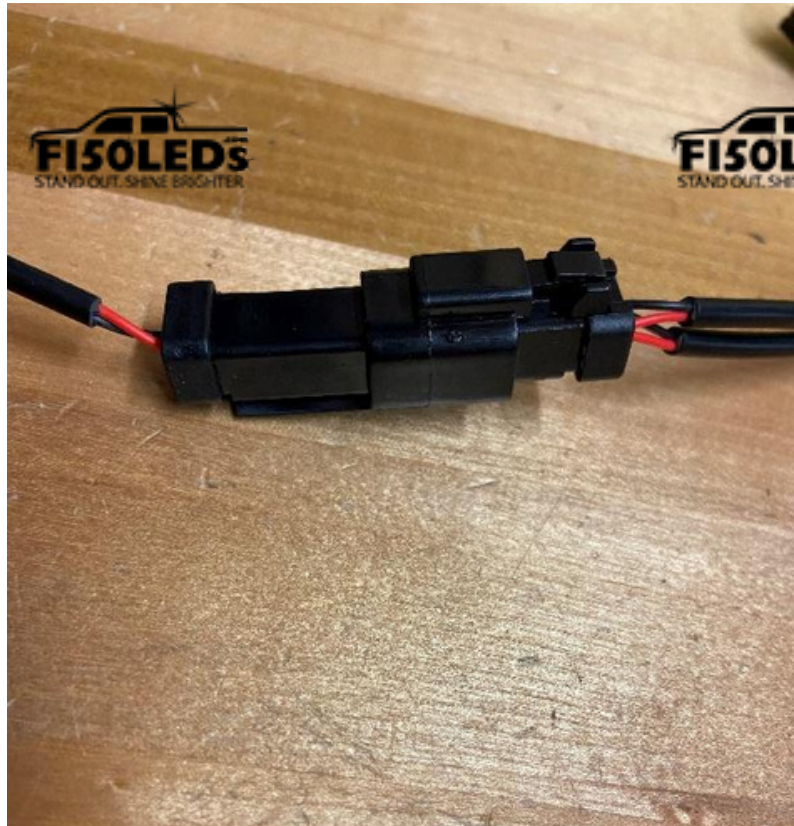
STEP 9

Reinstall the grille, when reinstalling the grille make sure the wires coming from the raptor lights are coming out of the top of the grille and in the engine bay area.

STEP 10



Connect the wires from the Raptor lights to the power harness in your kit. Be sure to fully press in these connections in until you hear a click. Then use the included zip ties to clean up the excess wire.





Text for support: 706-214-2618

Visit our site to chat: www.F150LEDs.com
or email CustomerSupport@F150LEDs.com

