



2011-2016 SUPER DUTY CONSOLE RAIL INSTAL

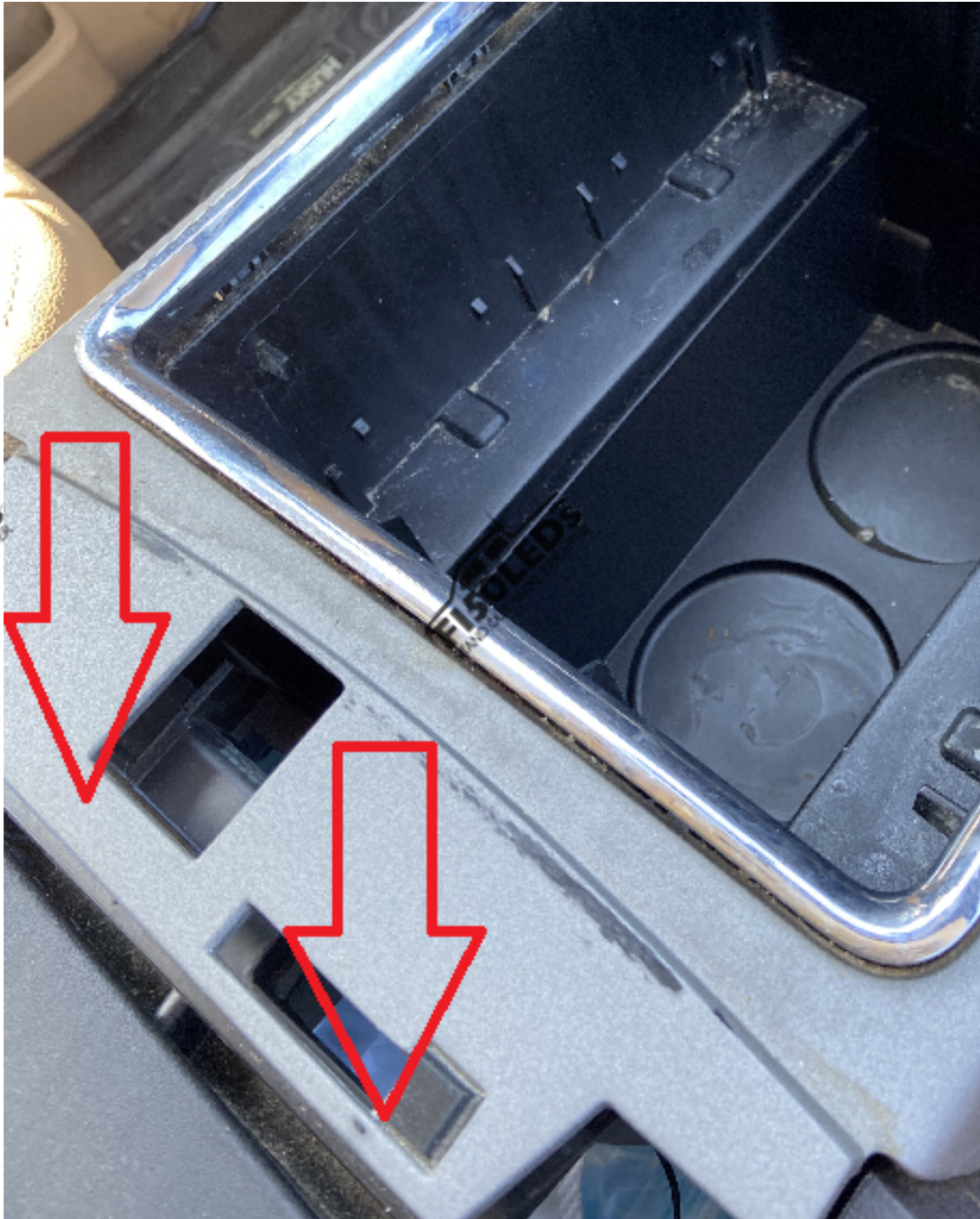
STEP 1

Pull out the two rubber cupholders in the console.



STEP 2

Open the center console then use a pry tool to pop up the area seen in the photo below.



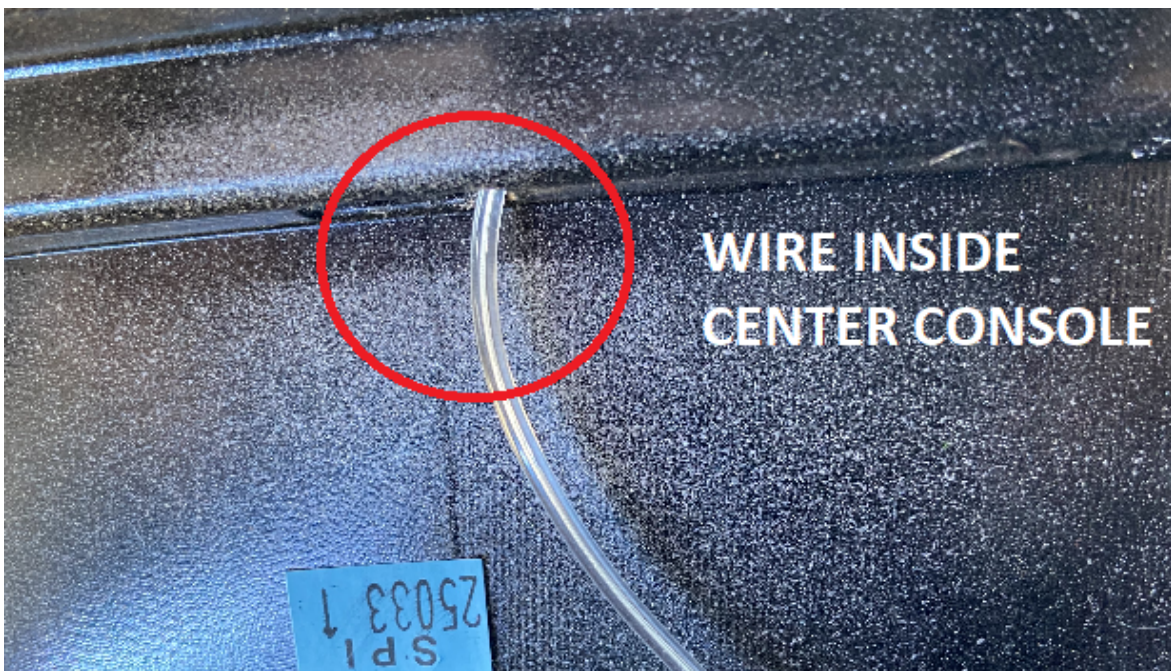
STEP 3

Use a small pry tool or small flathead screwdriver to remove the chrome trim piece seen below.



STEP 4

Run the light strip through the small opening and into the center console.

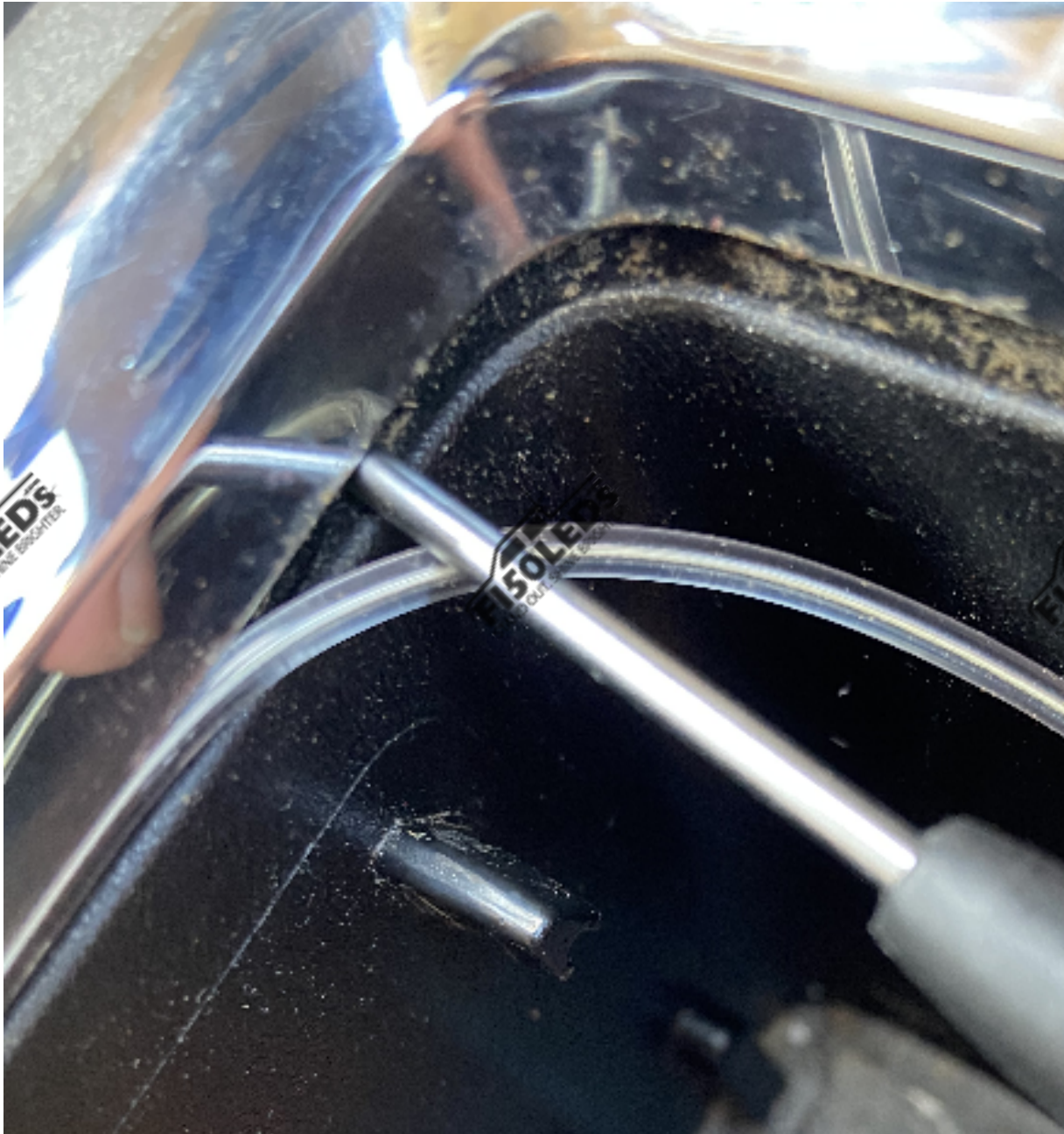


STEP 5

Pull as much of the wire that you need out into the cup holder console area then lay the trim piece back into place. Then start to run the wire in between the trim piece and the side of the console. As you run the light strip you can start to press on the chrome trim piece to snap it into place so the light strip stays in place.

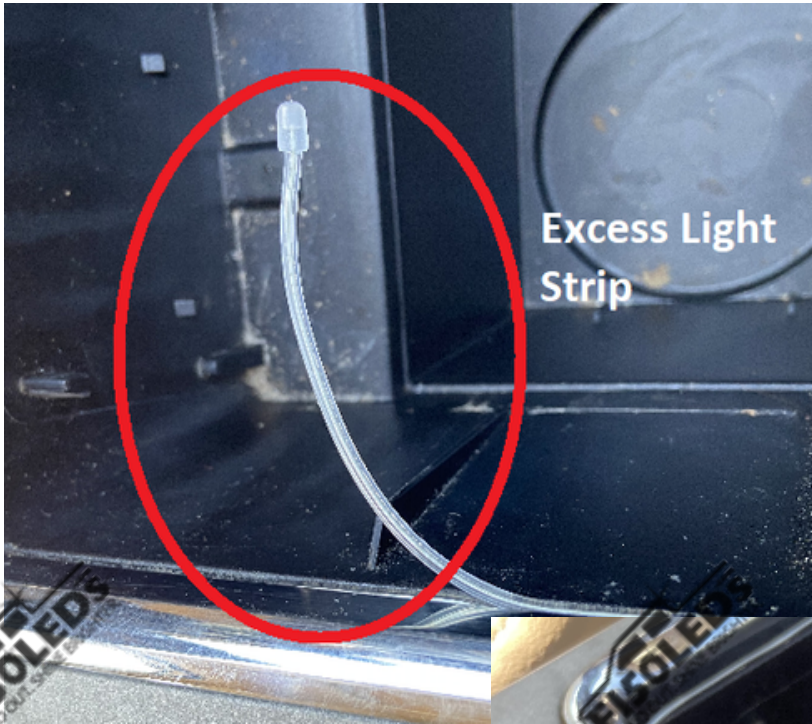


If needed you can take a small flat head screwdriver to help push the light strip into place.



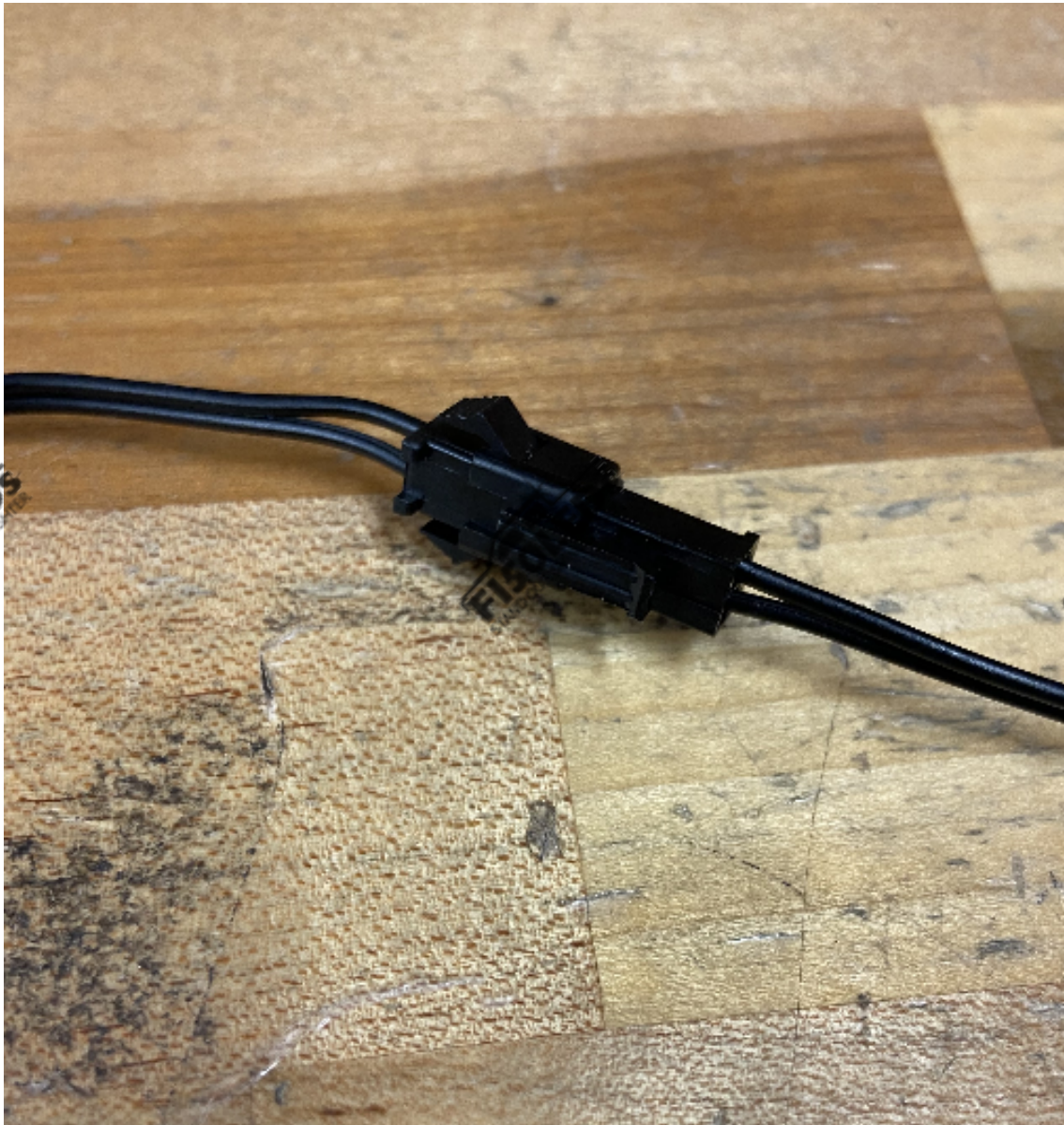
STEP 6

Once the light strip is ran all the way around the trim piece you can cut any excess of the light strip if needed



STEP 7

Take the black box that is connected to the wiring in the kit and place it in the center console then connect the small black connector from this box to the connector from the light strip.



STEP 8

Run the power and ground wire out of the back of the center console, use a pry to pry up on the trim piece so that the wire can be tucked in and hidden.



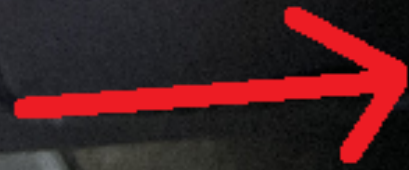
STEP 9

Use the pry tool to pop open the rear trim piece where the rear A/C vents are, then run the wire inside this area and pop it back into place.





Run the wire
across the trim
piece





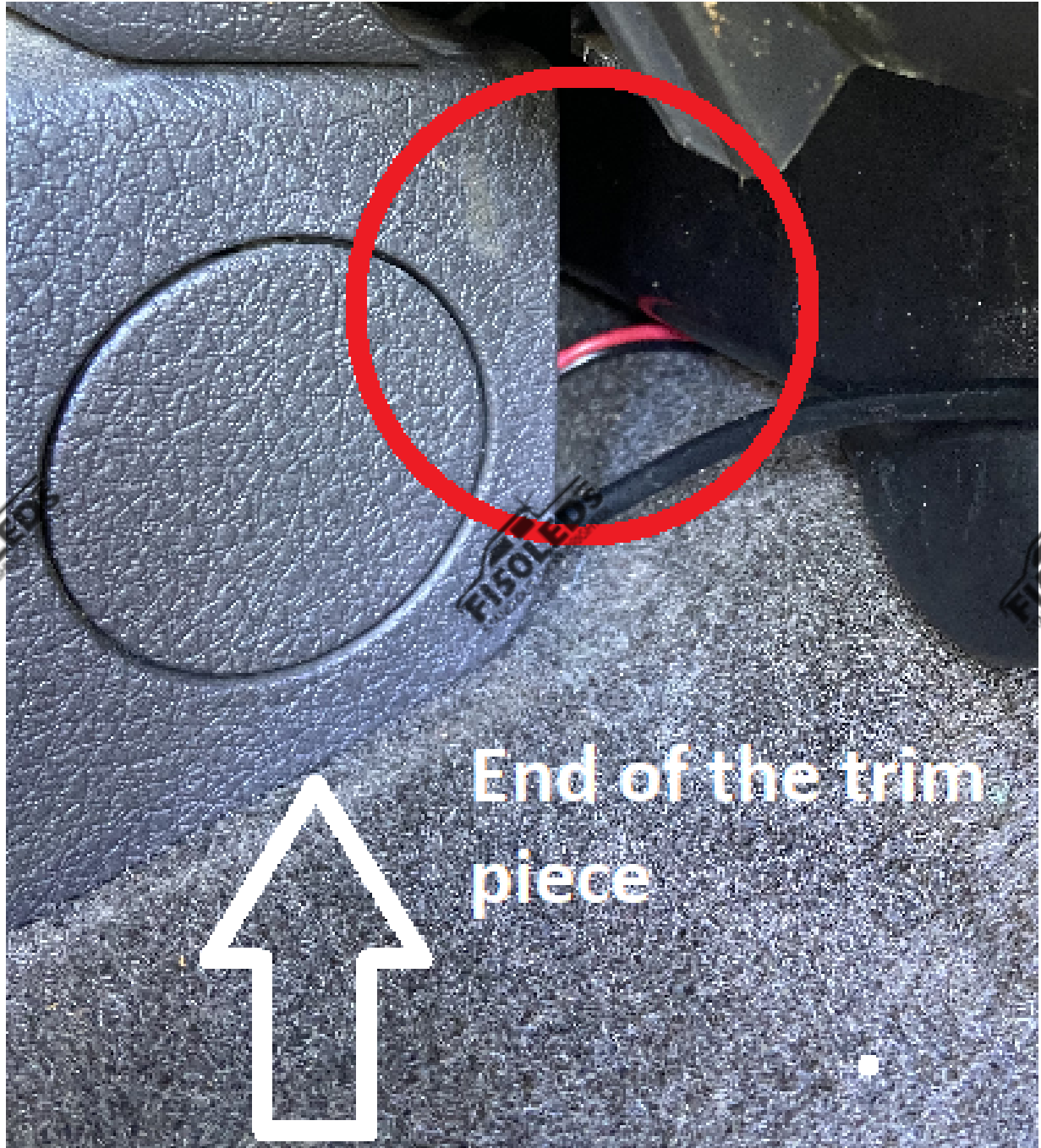
STEP 10

Run the wire under the trim piece to the front of the truck in between the passenger seat and center console.



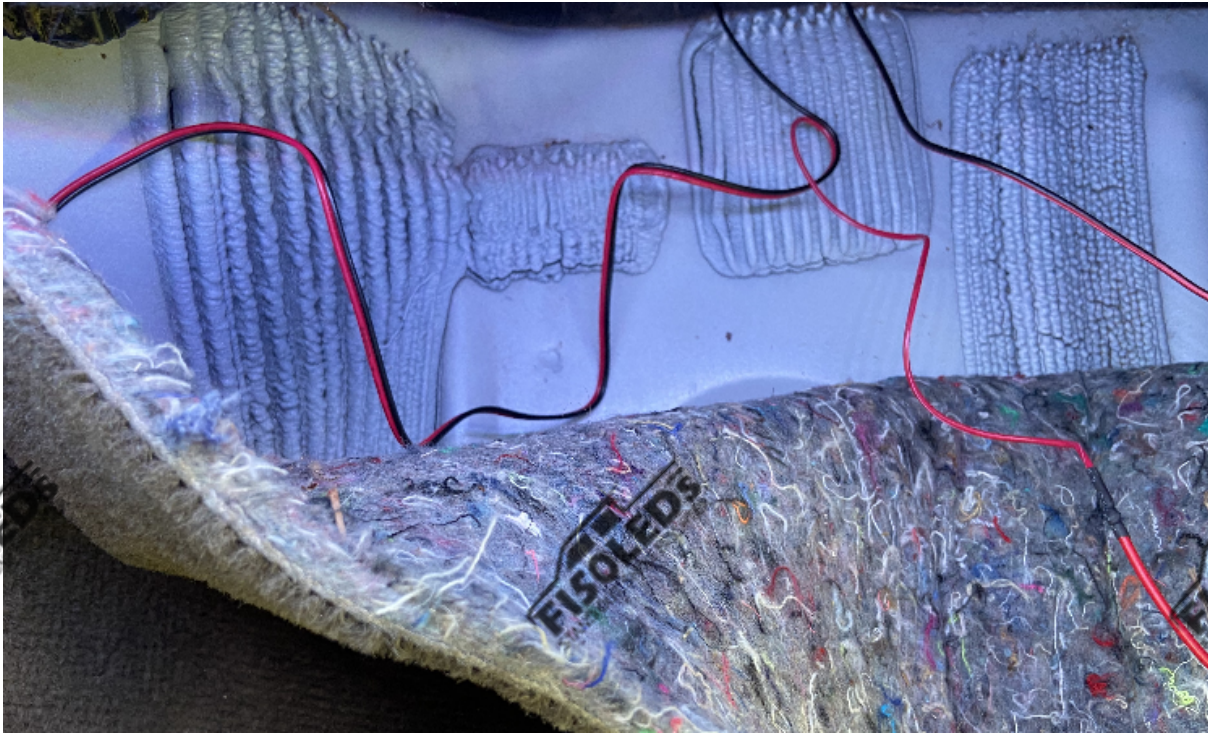


Continue to tuck this wire behind the trim piece until it gets to the passenger footwell.



STEP 11

Tuck the wire under the carpet in the passenger's foot well. If you can not pull back on the carpet run the wire across the front of the passenger footwell.



STEP 12

Ground your terminal ring to the bolt at the front of your passenger foot area.



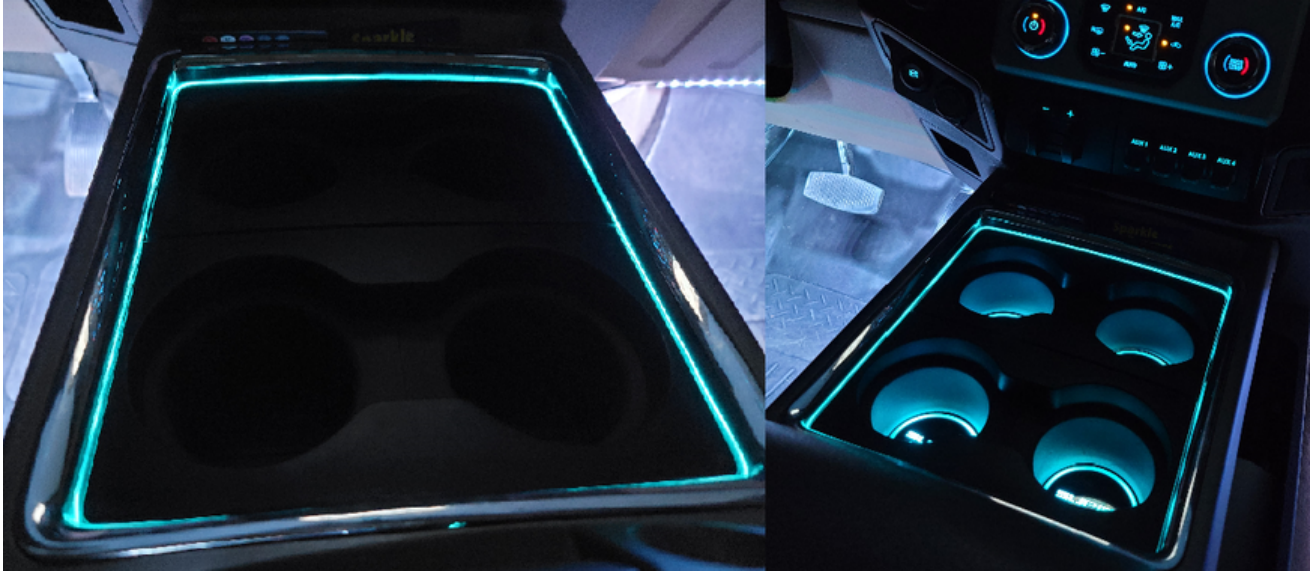
STEP 13

Remove the plastic piece that is covering your fuse panel, remove the fuse that is inserted in fuse location 37. Then insert your fuse tap into fuse location 37.





Then reinstall the plastic cover over the fuse panel.



Text for support: 706-214-2618

Visit our site to chat: www.F150LEDs.com
or email CustomerSupport@F150LEDs.com

