

Pure Hydration Under Counter Conversion Instructions

Required Tools:

- Flat bladed Screwdriver
- Adjustable wrench
- Cordless or electric drill with a 3/8" drill bit
- Hole saw with a 1" bit (if needed)
- Scissors
- Ruler or tape measure
- Protective eyewear

Step One: Locate a Mounting Hole in Your Sink

1.1 Locate a place on your sink or countertop that the faucet can be installed and will drain into the sink. Be sure to inspect the area below the sink to ensure there is adequate clearance. In many sinks there are knockout holes specifically designed for adding things like faucets and soap dispensers. Many customers remove soap dispensers that aren't being used and replace them with the under-counter faucet.

1.2 Drilling into granite, quarts and natural stone countertops can be accomplished using a diamond tipped hole saw. **CAUTION:** If in doubt when drilling through granite and stone surfaces, please consult an expert as you may require special drilling techniques. Most plumbers and granite fabricators can cut the hole in just a minute or so and are well worth the service call charge.

1.3 If you're drilling a hole into a stainless-steel sink, you can use a standard carbide hole saw with a lubricant to keep it from overheating. Running the drill at 1/2 the speed will also keep the heat down.

1.4 Using a 1" hole saw bit (carbide or diamond tip) depending on application and a variable speed drill, make a hole in your chosen position in the counter surface or sink top directly above the cabinet in which you are installing the Pure Hydration drinking water system. It is advisable to install in such a way so that tap dispenses over a sink or drainage area. Install where good access for tightening the mounting nut from the underside is available.

Step Two: Mounting the Faucet

Note: if you are mounting into a 1" hole, you may elect not to install the chrome finish washer in the following step. The washer is not required for 1" holes.

2.1 Slide the chrome finish washer and one of the black rubber washers over the red, white, and blue tubing and position over the threaded shaft just below faucet base as shown in figures 1/2. Insert the red, white and blue tubing into your new hole and drop the faucet into position. Next slide the second black washer and nut over the red, white, and blue tubing and tighten the nut onto the threaded shaft as shown in figures 3. Have someone hold the faucet in the desired position centered over the chrome washer and firmly tighten the nut.

Step Three: Connecting the Water Supply

3.1 If you are installing the faucet as a retrofit to an existing system, turn off the water supply and remove all four filter cartridges. Slide the Pure Hydration faucet supply line union off the base of the faucet using a regular flat bladed screwdriver or butter knife. Gently apply downward pressure to the union connection locking collar and slide the union and supply line off the system faucet connection as shown in figure 4.

3.2 Drill a 5/16" hole in the upper right rear side of the Pure Hydration body as shown in figure 5. Use caution while drilling by applying light pressure so that you don't cause damage to any plumbing inside the body.

3.1 Cut the white tube 13" from the bottom and insert the 13" piece of tubing into the 3/8" hole. Insert the white plastic tube end into the faucet supply line union and check for security by gently tugging on tube – see figures 6-8.

3.2 Insert the in-line check valve onto the opposite end of the white tubing with the arrow pointing away from the Pure Hydration unit as shown in figure 9.

3.3 If you are installing the faucet with a new Pure Hydration system, follow the instructions on installing the filters in the manual or see "How to Install Filters" video on www.cosanusa.net.

3.4 Turn off cold water supply and disconnect the cold water supply line as shown in figure 10.

3.5 Install the 3/8 angle stop valve onto the cold-water supply valve and reinstall the cold water supply line on the top side of the angle stop valve as shown in figure 11. Use caution in not cross-threading or over tightening the connections. Slide the blue plastic tube into the angle stop valve 1/4" tube fitting as shown in figure 11 and check for security by gently tugging on tube.

3.6 Insert the red tube into the fitting located at the right side of the base of the Pure Hydration unit as shown in figure 12 and check for security by gently tugging on tube.

3.7 Turn on the drinking water faucet and turn the blue valve on the angle stop valve to the on position as shown in figure 11. Turn the cold-water supply valve back on and inspect for leaks. If this is a new Pure Hydration system installation, the water will take several seconds to begin flowing out of the faucet and will initially run greyish colored water for 3-5 seconds as the system purges dust particles from the carbon filters. Run three gallons of water (10-minutes) through the system and begin drinking. You can now insert the front and rear covers on the unit and reposition the unit being careful not to kink any of the lines.

Notes:

1. The unit flows at a rate of 1.5 liters per minute by design based on a .02-micron filter rating.
2. The system is designed in such a way that when the faucet is in the "off" position, there is no water pressure delivered to the Pure Hydration unit. Water pressure is delivered to the unit only when the faucet is turned to the "on" position. This prevents water pressure being applied on the unit when not being used preventing accidental leakage or discharge.
3. The faucet will drip water for approximately 10-seconds when turned to the "off" position while the Pure Hydration unit depressurizes.

Figures 1-12

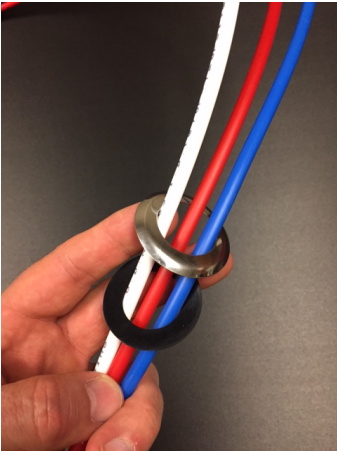


Figure 1



Figure 2

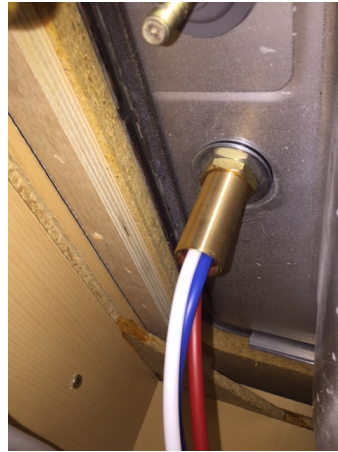


Figure 3



Figure 4

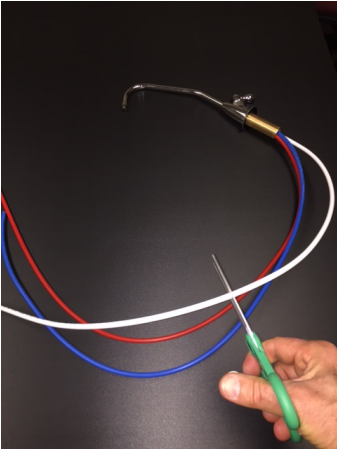


Figure 5



Figure 6



Figure 7



Figure 8



Figure 9



Figure 10



Figure 11

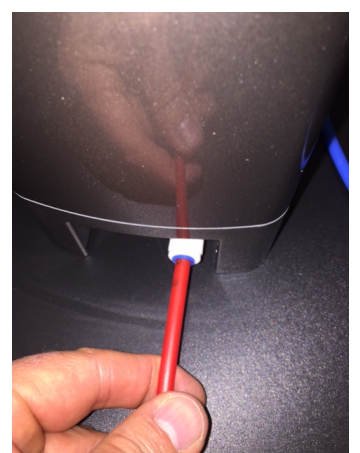


Figure 12

PHUCFI-0203