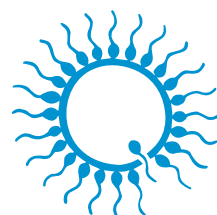




Animal Reproduction Technology

Equine



minitube

MINITUBE INTERNATIONAL

We need detailed knowledge of reproductive physiology in order to ensure that you are successful in the use of artificial insemination. Veterinarians and agro-scientists specialized in this field therefore, are responsible at Minitube for product development and for consulting with our clients. The technical demands of semen processing and preservation also require knowledge and expertise in other fields, such as electronics, sensorics, mechanics, chemistry, cryobiology and many others. At Minitube, these demands are met by specially trained engineers and scientists.

For product development, our teams of veterinarians and engineers cooperate closely. Together, they offer all the knowledge and experience necessary to guarantee the best possible results.

Minitube offers you specialized training programs, courses and technology transfer. In close cooperation with renowned research institutions we conduct fundamental research concerning assisted reproduction technologies as well as applied research that leads to improved techniques in production, evaluation and conservation of semen and embryos.

Originating in Tiefenbach, Bavaria, Minitube has established its competence over many years in more than 100 different countries all over the world. With several companies, highly-trained local representatives, and multilingual professionals, we keep in contact with the international AI industry. Innovative ideas, modern production techniques and a keen appreciation of product quality are the basic ingredients of our knowledge and your success.

We thank you for your interest and your confidence placed in us.

Dr. Christian Simmet
CEO



We look forward to your orders and inquiries:

Minitube International AG, Germany

Phone: +49 8709 9229 0
E-mail: minitube@minitube.de

Minitube USA

Phone: 800.646.4882
E-mail: info@minitube.com

Minitub do Brasil

Phone: +55 51 3222 7876
E-mail: minitub@minitube.com.br

Minitub Ibérica

Phone: +34 977 845 397
E-mail: info@minitub-iberica.com

Minitube Australia

Phone: +61 3 5342 8688
E-mail: info@minitube.com.au

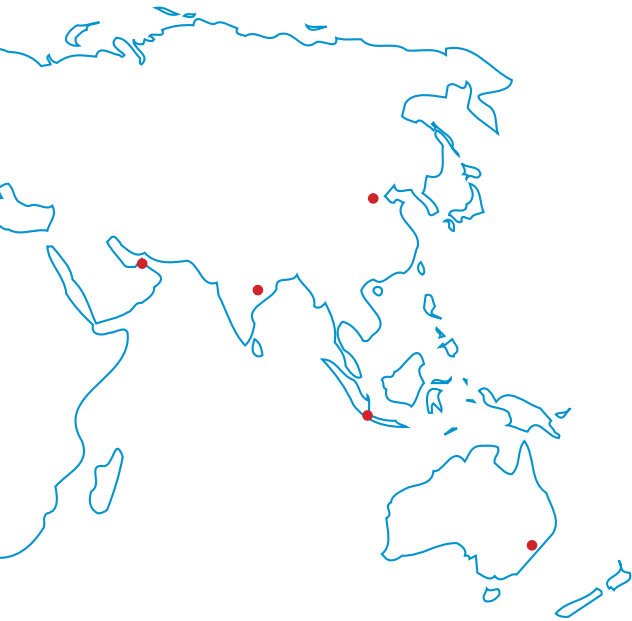
Minitub Chile

Phone: +56 (9)97452036
E-mail: minitub@minitubchile.cl

Mexitube Alemania

Phone: +52 442 246 73 46/47
E-mail: info@mexitube.mx

CONTENTS



| Contents | Page |
|-------------------------------|------|
| Semen collection | 02 |
| Semen evaluation | 06 |
| Semen extenders | 10 |
| Lab equipment and supplies | 13 |
| Straw processing and freezing | 16 |
| Semen storage and transport | 21 |
| Insemination and diagnostics | 23 |
| Embryo transfer and OPU | 27 |
| Training and service | 33 |

Minitube India

Phone: +91 11 4309 0668
E-mail: info@minitube-india.com

Minitube China

Phone: +86 185 1545 5770
E-mail: info@minitube.cn

Minitube Central Europe

Phone: +421 377 877 915
E-mail: mtce@minitube.sk

Minitube Canada

Phone: 800.500.7978
E-mail: info.canada@minitube.com

Minitube Middle East

Phone: +971 426 68871
E-mail: info.middle.east@minitube.com

Minitube Indonesia

Phone: +62 21 7591 75-96/94
E-mail: info@minitube.co.id



Semen collection

Hannover artificial vagina

(1) **Equine artificial vagina Hannover** with valve, inner liner (100 cm), 3 rubber rings, leather handle

REF. : 11220/0145

Accessories

(2) **Inner liner** for Hannover AV, rubber, with roll-up ends, sterilizable
long version, 100 cm REF. : 11222/0002
short version, 70 cm REF. : 11222/0003

(3) **Disposable inner liner**, width approx. 21 cm, roll with approx. 200 m; „sensitive“: smooth and resistant material REF. : 11222/0120

(4) **Warming bag** for collection glass, protects the semen from low temperature and UV radiation REF. : 11225/0026

(5) **Rubber band** for Hannover AV REF. : 11222/0001

Semen collection bottle
 250 ml, glass REF. : 11245/0006

(6) **Leather handle** for Hannover AV REF. : 5011222/0008



SEMEN COLLECTION

Missouri artificial vagina

Equine artificial vagina Missouri, double latex liner with valve and leather casing, adapter and collection bottle, length: approx. 50 cm

REF. : [11245/0000](#)

Disposable inner liner „AV-Liner“, for Missouri and Hannover AV, 25/package

REF. : [11245/0450](#)



Colorado artificial vagina

(1) Equine artificial vagina Colorado, complete with 3 inner rubber liners (tubular, conical, straight), 10 rubber bands, 2 clamps, 25 disposable inner liners, 25 semen bottles, 25 coupling nuts, 25 nylon filters and warming bag

REF. : [11230/0000](#)



Accessories

(2) Disposable inner liner, plastic, width 31 cm, roll with approx. 200 m; „sensitive“: smooth and resistant material

REF. : [11232/0030](#)

Disposable inner liner Colorado,

(3) 25/package

REF. : [11232/0110](#)

(4) AV shaped, 25/package

REF. : [11232/0102](#)

(5) Semen collection bottle Colorado,

200 ml, disposable, 100/package

REF. : [11231/0200](#)

Coupling nut for 200 ml semen bottle,

100/package

REF. : [11231/0301](#)

(6) Semen filter Colorado, nylon,

fits Colorado collection bottle, 25/package

REF. : [11231/0400](#)

Warming bag

(7) small, for 200 ml collection bottle

REF. : [11225/0026](#)

(8) large, blue

REF. : [11231/0185](#)

Rubber inner liner for Colorado AV, tapered end for connection to the bottle
flared front end

REF. : [11231/0102](#)

(9) straight form

REF. : [11231/0101](#)

round form

REF. : [11231/0201](#)

tubular, flared ends

REF. : [11231/0103](#)

SEMEN COLLECTION

Accessories for semen collection

Vaseline, 1000 g REF. : 11905/0100

Lubricating jelly Bengen,
1 l, water soluble REF. : 11906/1000

(1) Semen filter, nonwoven, 150 x 60 mm,
100/package REF. : 11245/3100

Semen filter pouch,
nonwoven, 10/package REF. : 11260/1000

(2) Thermometer for artificial vagina,
Bimetal, non-breakable, up to +100°C REF. : 11027/0000
up to +100°C, graduation 0.1°C, red filling REF. : 11027/0100

(3) Semen collection glove, extra sensitive, sperm safe, 100/box
Size M REF. : 11128/0055
Size L REF. : 11128/0060
Size XL REF. : 11128/0065
Size XXL REF. : 11128/0070



Sterivar

Low pressure sterilizer, specially designed for artificial vaginas and accessories. Made of stainless steel, double wall with insulation. With pressure safety valve, timer, water drain and protection against overheating.

- Temperature range: up to +100°C
- Pressure: max. 0.02 bar
- Inside dimensions: 750 x 400 mm
- Power supply: 115 V/60 Hz or 230 V/50 Hz
- Power consumption: 3500 W

Sterivar 230 V REF. : 11050/0015

Sterivar 115 V REF. : 11050/0014

Roller base for Sterivar REF. : 11051/0000



SEMEN COLLECTION

Hannover phantom for stallions

Hannover phantom, adjustable in height and inclination, covered with reinforced synthetic material coating, well padded, contoured body style, includes bite belt.

Size of the phantom fits for all breeds:

Body: 200 x 60 x 55 cm (W x H x D)

Height of the dummy: 1.30 m to approx. 1.70 m

[REF. : 11200/0000](#)

Hannover phantom with hydraulic height adjustment of both legs. Hydraulic height adjustment ensures low fatigue operation. Both feet can be lifted or lowered about 40 cm either individually or together by means of a hand pump.

[REF. : 11200/1000](#)

Accessories

Cover for phantom, synthetic material, collection side closed, with belts for attachment

[REF. : 11200/2601](#)

Leather blanket for phantom for stallions, collection side closed, with belts for attachment

[REF. : 11200/2501](#)

Bite belt

[REF. : 11200/2100](#)

Stretch foil for protection of phantom, 300 m [REF. : 32000/0010](#)

Bite belt 11200/2100



Lubricant Reprojelly

- Non-spermicidal lubricant, water soluble
- Iso-osmotic and sperm friendly, supports the sperm cell viability
- Batches are tested for sperm compatibility
- Ideal viscosity to better coat gloves, AI equipment and instruments

Tube with 100 ml, resealable [REF. : 11907/0100](#)

3 l canister, without dispenser [REF. : 11907/3000](#)

Dispenser for canister [REF. : 11907/3100](#)





Semen evaluation

AndroVision®

This highly precise automated system for computerized semen analysis stands out for the integration of the classic CASA analysis with more **advanced assays for sperm functionality**.

Concentration and motility, acrosome integrity, viability, mitochondrial activity and DNA integrity can be assessed fast and accurately with up to 1000 cells per field, making AndroVision® the perfect tool for the **objective and complete semen evaluation**.

Its features make AndroVision® the ideal choice for semen assessment in a research and production lab. AndroVision® is intuitive and easy to use: **only 3 clicks from start to result**.

AndroVision® software, with PC and accessories [REF. : 12500/0000](#)

AndroVision® high speed color camera [REF. : 12500/4400](#)

Optional hardware configurations

(1) **AndroVision® CASA system**
portable, with laptop and accessories [REF. : 12500/0010](#)

(2) **AndroVision® CASA system**
with touchscreen and barcode scanner [REF. : 12500/0001](#)



ANDROVISION® – MORE THAN CASA

AndroVision® software modules

Morphology and Morphometry

Interactive system for analysis of sperm morphology and morphometry. Identifies sperm in stained as well as unstained samples and measures length and width of the sperm head, head shape and midpiece asymmetry of each single sperm cell (acc. to Kruger). Results can be classified into a large range of morphologic abnormalities.

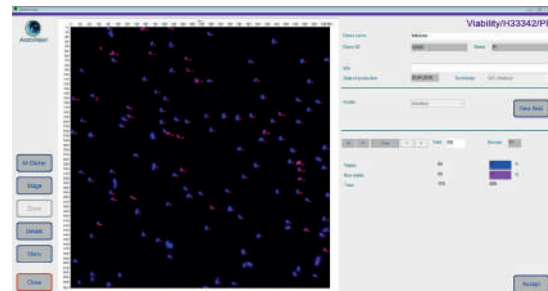
Module Morphology and Morphometry [REF. : 12500/1300](#)



Viability

Automated count of the percentage of membrane intact sperm, based on a double stain fluorescence assay.

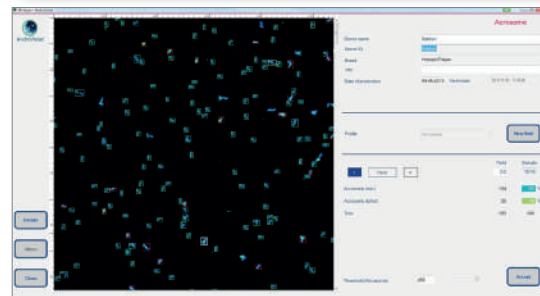
Module Viability* [REF. : 12500/1400](#)



Acrosome Integrity

Automated count of percentage of sperm with damaged acrosome, based on a double stain fluorescence assay.

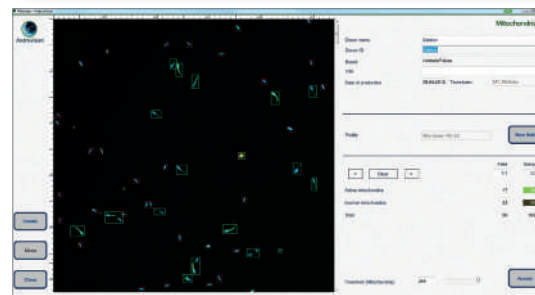
Module Acrosome Integrity* [REF. : 12500/1600](#)



Mitochondrial Activity

Automated count of percentage of sperm with active mitochondria, based on a double stain fluorescence assay.

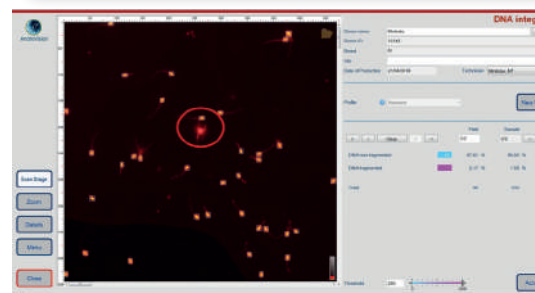
Module Mitochondrial Activity* [REF. : 12500/1700](#)



DNA Integrity

Automated reporting of the percentage of sperm with defective DNA based on the halo-technique combined with fluorescent staining.

Module DNA Integrity* [REF. : 12500/1800](#)



* requires fluorescence microscope

MICROSCOPY, VOLUME MEASUREMENT AND PHOTOMETRY

Phase contrast microscope CX 43

- Phase achromat optics with universal condenser
- Heated microscope stage with temperature control unit HT 200 with additional warming plate and two digital temperature displays (temperature adjustable)
- Ergonomic design
- 6 V/30 W halogen light

Phase contrast microscope CX 43

with phototube (trinocular), objectives 20x, 40x [REF. : 12005/0041](#)



Phase contrast microscope MBL

Functional microscope for semen analysis with heating system and temperature control unit for individual temperature adjustment.

Binocular, objectives 10x, 40x, 100x, temperature control unit HT 50

[REF. : 12010/2000](#)

with ocular color camera (1) and 11.6" monitor (2) [REF. : 12010/2100](#)

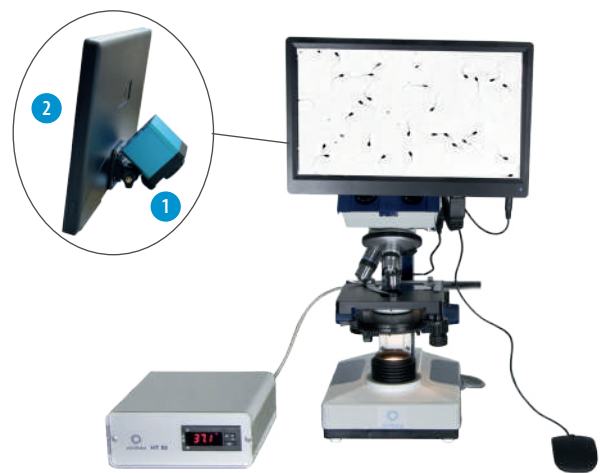
Trinocular, objective 20x

with temperature control unit HT 50 [REF. : 12010/2103](#)

with temperature control unit HT 200, additional warming plate, ocular color camera and 24" monitor [REF. : 12010/2101](#)

(1) Digital color camera for microscopes [REF. : 12110/1600](#)

(2) Monitor 11.6" with HDMI input [REF. : 12110/1610](#)



Semen dyes

Spermac semen dye for morphological evaluation,

4 x 50 ml [REF. : 15405/0000](#)

Farely stain for morphological evaluation,

3 x 250 ml [REF. : 15405/0026](#)

Eosin G, 2% solution for supravital staining,

50 ml [REF. : 15405/0025](#)

Nigrosin, 4% solution for supravital staining,

50 ml [REF. : 15405/0029](#)



Laboratory scale

Precision scale for the determination of the ejaculate volume, weighing range max. 2000 g, resolution 0.1 g, weighing pan 130 x 130 mm

[REF. : 14295/0444](#)



MICROSCOPY, VOLUME MEASUREMENT AND PHOTOMETRY

Microscopy supplies

Microscope slide, 76 x 26 mm, 50/box [REF. : 15400/2400](#)

Cover glass, 18 x 18 mm, 100/box [REF. : 15401/0990](#)

Immersion oil, 8 ml [REF. : 12000/0101](#)



Counting chambers (hemocytometers)

Thoma new [REF. : 15150/4771](#)

Neubauer improved [REF. : 15152/4421](#)

Bürker [REF. : 15153/0000](#)



Pipettor

Adjustable single channel pipette, yellow, autoclavable, 10 - 100 µl [REF. : 12425/4810](#)

Pipette tip, 10 - 100 µl, yellow, 1000/bag [REF. : 12425/9409](#)



Photometer SDM 1

The SDM 1 is a **compact, highly accurate photometer** developed for measuring sperm cell concentrations. It can be calibrated for equine, bovine, canine, porcine and small ruminants. Cleaning is simple, maintenance is minimal.

- Raw semen samples can be used without dilution
- LED light source provides stable output
- Cuvette is securely fixed in the correct measuring position
- Calibration is performed automatically with each sample measurement
- The semen concentration is displayed in million sperm/ml
- Power supply: with included mains adapter 100 - 240 V or batteries

Photometer SDM 1, calibrated for equine semen [REF. : 12300/0101](#)



Accessories

Microcuvette for SDM 1, 100/box [REF. : 12300/1111](#)

Multispecies software for reprogramming to other species [REF. : 12300/0130](#)



Semen extenders

EquiPlus

Balanced medium with dry milk for preservation of sperm activity up to 72 hours. Designed for 5°C storage and transport.

With antibiotics:

Powder

for 1 l, with Lincomycin and Spectinomycin **REF. : 13570/0202**

for 100 ml, with Lincomycin and Spectinomycin **REF. : 13570/0210**

Liquid

200 ml, with Lincomycin and Spectinomycin **REF. : 13570/0250**

200 ml, with Ticarcillin **REF. : 13570/0260**

200 ml, with Amikacin and Penicillin **REF. : 13570/0261**

100 ml, with Gentamicin **REF. : 13570/0301**

Without antibiotics:

Powder, for 1 l, without antibiotics **REF. : 13570/0201**

Powder, for 100 ml, without antibiotics **REF. : 13570/0240**



CHILLED SEMEN PROCESSING

Gent

For fresh semen, with egg yolk and antibiotic, ready to use.

| | |
|--------|-------------------|
| 45 ml | REF. : 13571/0045 |
| 100 ml | REF. : 13571/0100 |



EquiPlus Reinforcer

Designed to improve sperm transport in the uterus and to optimize survival of viable spermatozoa in the mare's reproductive tract. Semen is recovered post-breeding, then evaluated and extended before it is placed back into the mare during reinforcement breeding. Ready-to-use, requires no dose calculations.

| | |
|-------|-------------------|
| 15 ml | REF. : 13570/0600 |
|-------|-------------------|



CushionFluid

For gentle centrifugation of stallion spermatozoa. Assures a higher yield of sperm cells as compared to standard centrifugation.

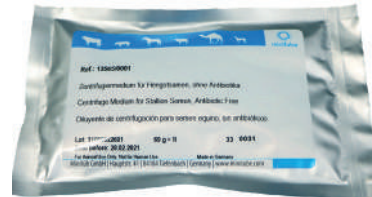
| | |
|--------|-------------------|
| 100 ml | REF. : 13580/0001 |
|--------|-------------------|



Centrifugation medium

Powder for 1 l transparent EDTA - Glucose solution

| |
|-------------------|
| REF. : 13565/0001 |
|-------------------|



Water for semen extenders

Bidistilled, sterilized, pyrogen-free

| | |
|--------|-------------------|
| 1 l | REF. : 13570/1000 |
| 100 ml | REF. : 13570/1100 |



Minitube extenders are produced according to highest GMP-certified quality standards.

All components are from constantly excellent, controlled sources. Each extender batch is tested for its chemical, microbiological, physical and biological properties.

Certificates are available upon request.



CRYOPRESERVATION OF SEMEN

Spectrum - The SBS CryoSystem

The SBS CryoSystem consists of a range of Spectrum freezing extenders, which feature different cryoprotectants and specific different egg yolk or milk content. **The Spectrum concept allows to identify the best freezing extender for each individual stallion.**

All Spectrum extenders are presented as ready to use solutions. There is no need to source individual components or to add antibiotics.

With Spectrum extenders and the SBS CryoSystem it is possible to achieve pregnancy rates with frozen-thawed semen which are comparable to cooled semen.

Spectrum extenders are presented in convenient package sizes. Transport and storage at -20°C.

Spectrum Red

- High egg yolk content
- No milk
- Best combined with rapid cooling and freezing

30 ml

REF. : 13572/0030

Spectrum Orange

- Complex formula
- Low in milk and egg yolk
- Best combined with slow cooling and freezing

30 ml

REF. : 13572/0020

Spectrum Blue

- Complex formula
- Low in milk and egg yolk
- Best combined with slow cooling and freezing
- The cryoprotectant is highly membrane permeable

30 ml

REF. : 13572/0050

Spectrum Violet

- Complex formula
- Low in milk, contains egg yolk
- Best combined with slow cooling and freezing
- Contains a balanced combination of cryoprotectants

30 ml

REF. : 13572/0060

Spectrum Green

- Milk-based
- Low in egg yolk
- Best combined with rapid cooling and freezing
- Beneficial for certain stallions only

30 ml

REF. : 13572/0040

Spectrum extenders are not available in Australia.



Test Freeze Kit

Minitube offers a Test Freeze Kit, containing the main Spectrum extenders in smaller quantities, plus centrifugation medium and CushionFluid for centrifugation. With the help of this Test Kit, it is possible to find the best Spectrum extender for each stallion.

- 2 x Spectrum Orange (15 ml), 2 x Spectrum Red (15 ml)
- 1 x Spectrum Blue (15 ml), 1 x Spectrum Violet (15 ml), 1 x Spectrum Green (15 ml)
- 2 x CushionFluid, 30 ml
- 2 x SBS Centrifugation Medium, 120 ml

Test Freeze Kit

REF. : 13572/0000





Lab equipment and supplies

Universal cabinet

For warming and sterilization. Temperature range: +30°C to +220°C.

Various sizes available (dimensions inside, W x H x D)

| | |
|---|-----------------------------------|
| 32 I , 400 x 320 x 250 mm, 44 kg, 230 V | REF. : 14127/0032 |
| 32 I , 400 x 320 x 250 mm, 44 kg, 115 V | REF. : 14127/0033 |
| 53 I , 400 x 400 x 330 mm, 55 kg, 230 V | REF. : 14127/0053 |
| 53 I , 400 x 400 x 330 mm, 55 kg, 115 V | REF. : 14127/0054 |
| 108 I , 560 x 480 x 250 mm, 72 kg, 230 V | REF. : 14127/0108 |
| 108 I , 560 x 480 x 250 mm, 72 kg, 115 V | REF. : 14127/0109 |
| 256 I , 640 x 800 x 500 mm, 96 kg, 230 V | REF. : 14127/0256 |
| 256 I , 640 x 800 x 500 mm, 96 kg, 115 V | REF. : 14127/0257 |



Water bath

Electronic temperature control, stainless steel, with grid and lid.

| | |
|--|-----------------------------------|
| 7 I , inner dimensions: 240 x 210 x 140 mm (W x H x D) | |
| 230 V | REF. : 14078/0001 |
| 115 V | REF. : 14078/0002 |
| 10 I , inner dimensions: 350 x 210 x 140 mm (W x H x D) | |
| 230 V | REF. : 14079/0001 |
| 115 V | REF. : 14079/0002 |



LAB EQUIPMENT AND SUPPLIES

Centrifuge Minitube

- With swing out rotor
- Complete with buckets for vials: 4 x 100 ml/4 x 50 ml/8 x 15 ml
- Speed in g (RCF) and rpm: max. speed 4000 rpm/2200 x g
- Memory: 99 programs

230 V [REF. : 14601/0000](#)
110 V [REF. : 14601/0001](#)



Laboratory centrifuge

- With quadruple swing out rotor
- Beaker for 100 ml vials
- Max. RCF: 2540 xg (stepwise adjustment of 10 xg)
- Last run memory

100 - 240V / 50-60Hz [REF. : 14602/0580](#)



Rolling mixer RM5

For gentle, constant homogenization of semen doses in tubes. Appropriate for use inside the refrigerator.
Dimensions: 430 x 180 mm (W x H)

230 V [REF. : 14340/0348](#)
115 V [REF. : 14340/0349](#)



Shaker

Platform with two fixation devices and non-slip rubber pad, includes timer.
Shaking frequency: 150-1350 cycles/min
Area of platform: 220 x 220 mm

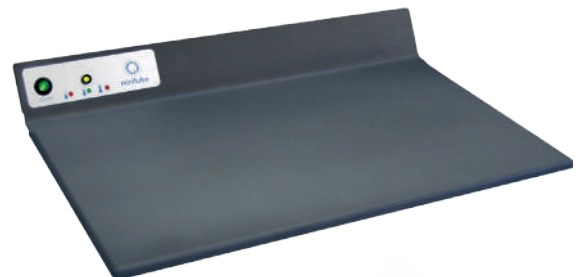
230 V [REF. : 14703/0304](#)
115 V [REF. : 14703/0305](#)



Laboratory heating plate

For keeping raw ejaculates warm until analysis is completed. Preset temperature: 37°C. Integrated control unit, external power supply. Heated area: 470 x 260 mm. Suitable for 115 V und 230 V.

Laboratory heating plate [REF. : 12055/0010](#)



Infrared thermometer

For temperature measurement without contact. With laser for marking the measuring point. Measurement range: -50 to +200°C / +200 to +800°C. Display in °C or °F selectable. With case and battery.

Infrared thermometer [REF. : 15120/7000](#)



LAB EQUIPMENT AND SUPPLIES

Glass ware

We offer a variety of measuring pipettes, graduated cylinders, beakers, dispensers, test tubes, Erlenmeyer flasks etc.

Please contact us for further information.



Plastic vials

Plastic vial with graduation

| | |
|---|-------------------|
| 30 ml, with screw cap, 50/package | REF. : 17231/0030 |
| 50 ml, with screw cap, 25/package | REF. : 17220/0017 |
| 13 ml, sterile, with cap, 100/package | REF. : 17230/6001 |
| 13 ml, round bottom, without cap, 100/package | REF. : 17230/6000 |

Screw cap for 13 ml plastic vial, 1000/package

| | |
|--------|-------------------|
| red | REF. : 17230/6055 |
| blue | REF. : 17230/6056 |
| green | REF. : 17230/6058 |
| white | REF. : 17230/6054 |
| violet | REF. : 17230/6057 |
| yellow | REF. : 17230/6059 |

Rack

| | |
|---|-------------------|
| for 20 plastic vials 12/13 ml, acrylic glass | REF. : 17230/9384 |
| for 20 plastic vials 30 ml, acrylic glass | REF. : 17231/9384 |
| for 24 test vials of 18 mm, stainless steel, with numbers | REF. : 14076/0005 |



Sterile bags

With incorporated wire and write-on tag, 100/package

| | |
|---------------|-------------------|
| Volume 60 ml | REF. : 17224/0250 |
| Volume 120 ml | REF. : 17224/0500 |
| Volume 350 ml | REF. : 17224/1000 |

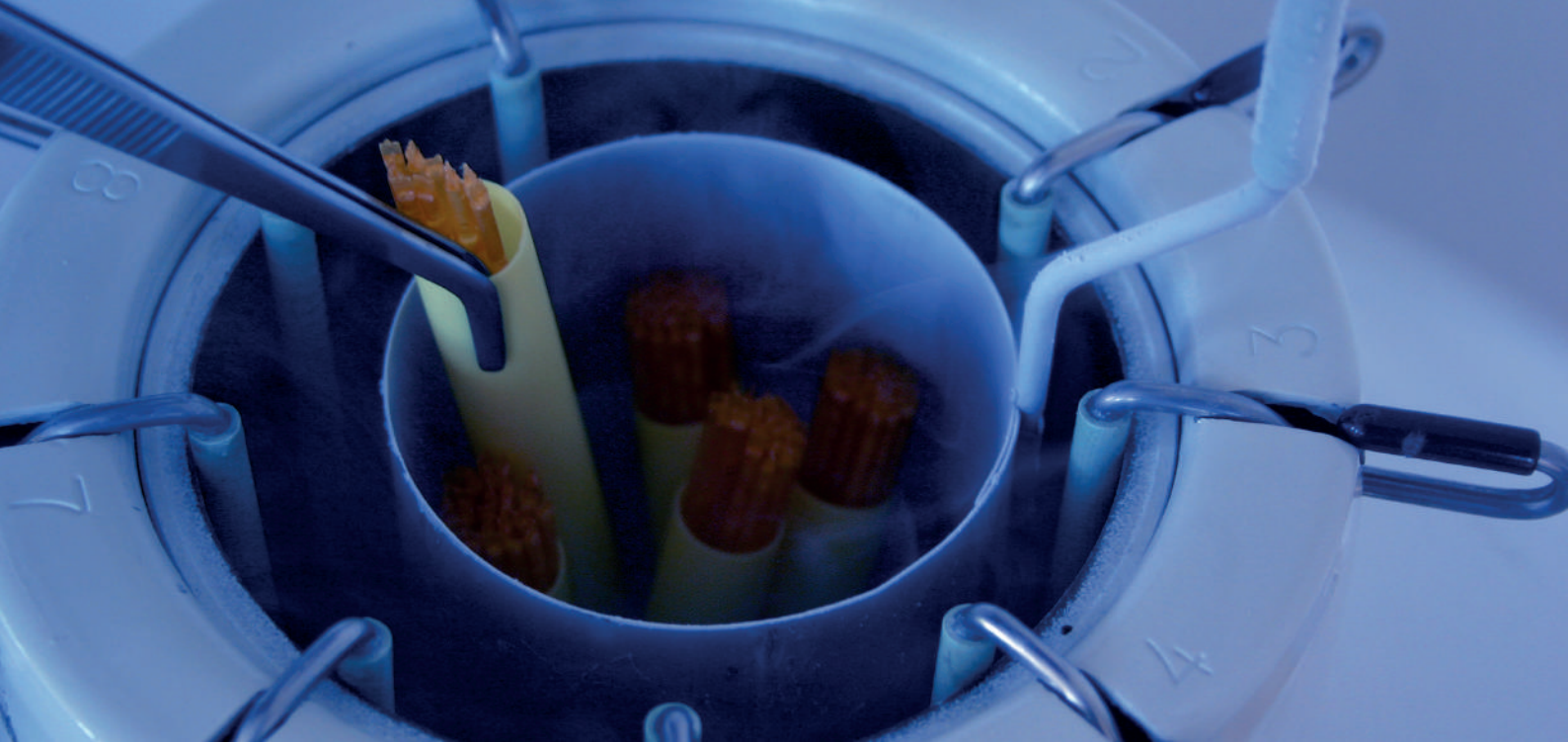


Disposable syringes

All plastic, sterilized, in sizes from 1 ml to 50 ml

| | |
|--------------------|-------------------|
| 1 ml, 100/package | REF. : 19801/0001 |
| 2 ml, 100/package | REF. : 19801/0002 |
| 5 ml, 100/package | REF. : 19801/0005 |
| 10 ml, 100/package | REF. : 19801/0010 |
| 20 ml, 100/package | REF. : 19801/0020 |
| 30 ml, 500/package | REF. : 19801/0063 |
| 50 ml, 300/package | REF. : 19801/0060 |





Straw processing and freezing

Semen straws

MediumStraw, 0.5 ml, clear, 2500/bag [REF. : 13408/0010](#)

EcoStraw, 0.5 ml, clear, 2500/bag [REF. : 13408/3010](#)

EcoStraws feature a plug with a shorter inner wick section that absorbs 3-4% fewer sperm cells than the corresponding symmetrical plugs of standard semen straws. They are ideal for overnight equilibration of semen at refrigerated temperatures. EcoStraws are used in exactly the same way as standard semen straws.

Semen straws made by Minitube are available in many different colors, and pre-printed upon request.



Macrotubes

2.5 ml, length: 140 mm [REF. : 13441/0133](#)

4 ml, length: 240 mm [REF. : 13441/0240](#)

5 ml, length: 280 mm [REF. : 13441/0280](#)

Sealing balls for macrotubes:
Metal or glass, available in many different colors.

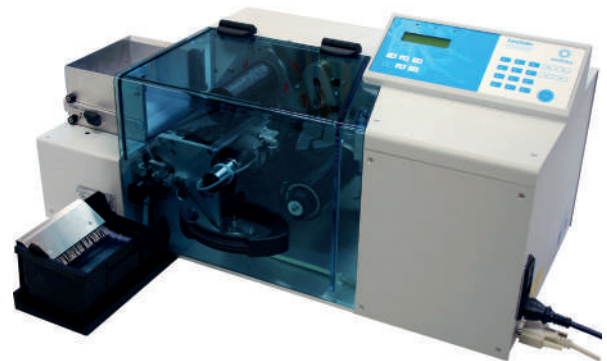


PRINTING OF SEMEN STRAWS

EasyCoder

Clean and odorless printing of straws without ink and solvents.

- Thermal transfer printer with automatic straw supply (output: 3600 straws per hour) for immediately non-abrasive print
- Unparalleled neat and clear printing on 0.5 and 0.25 ml straws; easy and quick conversion between different straw sizes
- Prints up to 3 lines per straw, including barcodes, logos and specific characters
- Control via PC by a clear and user-friendly Minitube software
- Easy handling, little maintenance required
- Dimensions (L x W x H): 660 x 370 x 310 mm (PC not included)
- Power supply: 110 V/50-60 Hz or 230 V/50-60 Hz



EasyCoder printer REF. : 13038/0000

Thermal transfer ribbon, black REF. : 13038/0010

MultiCoder

Professionalize your lab process with quick and easy machine readable labeling of samples.

Your benefits

- Very versatile: print system can label most kinds of materials such as plastics, glass or aluminum
- Manually moveable slide and a unique, easy-to-use carrier system allow for a speedy work process
- Easily writeable information on the smallest amount of space, including text, barcode, QR-Code and logo

Product features

- High resolution inkjet printing
- Print head protection system (avoids drying-out of ink)
- Sensor based technique for print activation allows perfect manual workflow
- LED signalling of printer status
- No tools needed for change of product carriers
- Pre-designed print layouts
- Upload of MS Excel based data formats possible
- Automatic creation of content for ready-to-print designs via database

MultiCoder printer REF. : 13145/0000

More information needed?
Please ask for the MultiCoder leaflet!



UNIQUE, FLEXIBLE & VERSATILE

Quick and easy print on a whole range of items:
semen straws, goblets, cassettes, culture dishes,
macro tubes, syringes, cryovials and many more

FILLING AND SEALING OF STRAWS

MPP Uno

Automatic filling and sealing machine for 0.25 and 0.5 ml straws.

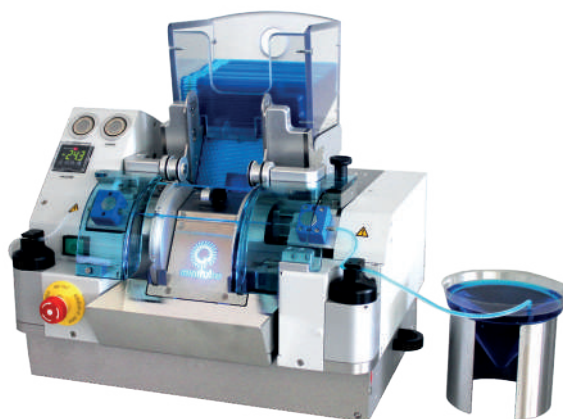
Product features

- Seals and fills 1 straw per cycle (ideal for handling small volumes)
- Sealing performed by ultrasound
- Conversion between 0.25 ml straws and 0.5 ml straws without exchanging any parts and within only a few minutes
- Very compact device which takes up little space
- Vacuum pump and pressure controller integrated into the device
- Ultrasonic generator in an external casing that can be installed at a distance of up to 2.5 m (ON/OFF switch directly on the machine)
- Completely closed filling and sealing area: best hygienic and safety conditions fully guaranteed

Technical features

- Capacity: approx. 4000 straws/hour
- Hopper capacity: 2200 straws of 0.25 ml or 1300 straws of 0.5 ml
- Machine dimensions: 460 x 350 x 410 mm (W x H x D) plus ultrasound generator
- Power supply: 110 V/60 Hz or 230 V/50 Hz

MPP Uno, complete [REF. : 13017/0000](#)



Accessories

Straw hopper, for 0.25 and 0.5 ml straws [REF. : 13018/0006](#)

Filling nozzle 0.5 ml [REF. : 13017/0017](#)

Suction nozzle 0.5 ml [REF. : 13017/0027](#)

Fixing unit for filling and suction blocks, stackable, stainless steel [REF. : 13017/0050](#)

Washer for 0.25 ml and 0.5 ml nozzles, 5000/bag [REF. : 13021/3001](#)

Filling and suction tubing, 380 mm, sperm friendly material (silicone), bevelled edge, 100/aluminum foil bag [REF. : 13021/3800](#)

Semiautomatic system SFS 133

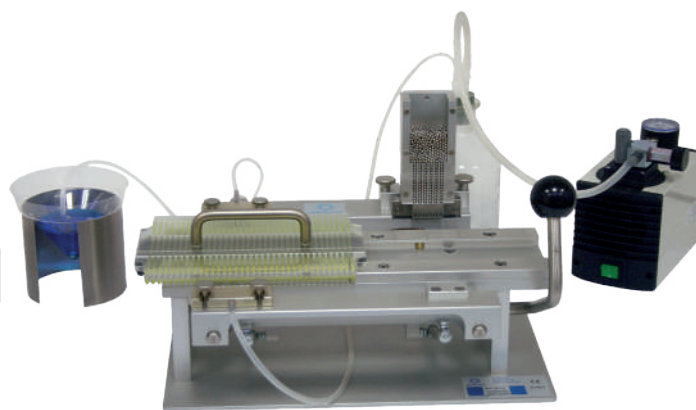
Product features

- Straws are filled and sealed 6 by 6
- Sealing is done securely and hygienically with metal or glass sealing balls (available in different colors)
- An air bubble of 1 cm is automatically produced in each straw
- Capacity: approx. 2000 straws/hour

Semiautomatic system SFS 133, with vacuum bottle, filling and suction head for 0.5 ml straws [REF. : 13133/0133](#)

Low density vacuum pump, 30-60 Hg, with manometer and valve
230 V/50 Hz [REF. : 13133/0267](#)
115 V/50 Hz [REF. : 13133/0268](#)

Cartridge loading device,
with loading block and 10 cartridges for 36 straws 0.5 ml [REF. : 13133/0005](#)



Accessories

Washer for all filling and suction nozzles, 5000/bag [REF. : 13021/3001](#)

Silicone tubing for SFS
transparent, 3 x 1 mm, length 10 m [REF. : 13133/3550](#)

Filling head with 6 nozzles [REF. : 13133/1000](#)

Suction head with 6 nozzles [REF. : 13133/2000](#)

Metal sealing ball for 0.5 ml straws [REF. : 13400/9900](#)

FREEZING OF STALLION SEMEN

Automatic freezer IceCube

Computer controlled freezer, with comfortable data input and automatic recording of the freezing curve.

Product features

- Temperature range: +40 to -180°C
- Freezing rates: 0.01 to 60°C/min
- Heating rates: 0.01 to 15°C/min
- Display accuracy: 0.01°C
- Temperature measurement via 2 Pt-100 resistance thermometers
- Capacity: approx. 900 x 0.5 ml straws per freezing cycle

Software for freeze programming and control. Unlimited storage of programs and processed files, color graphic display of all temperature curves, wide possibility of parameter settings.

Dimensions: 540 x 420 x 520 mm (L x W x H), weight: 29 kg

IceCube 14S with connector kit for LN₂ pressure container

(1) with 10" tablet [REF. : 16821/3000](#)

with 12" touch screen monitor,
to connect to own PC or laptop [REF. : 16821/2000](#)

without screen, to connect to own PC or laptop [REF. : 16821/1000](#)

Accessories

(2) Rack for IceCube 14S, for 36 straws [REF. : 16821/5036](#)

Loading device for straw rack [REF. : 16821/5037](#)

(3) Handling rack for IceCube 14S [REF. : 16821/5030](#)

(4) Spacer for IceCube 14S [REF. : 16821/5018](#)

Liquid Nitrogen pressure container, 60 l [REF. : 16820/1900](#)

Roller base for LN₂ pressure container [REF. : 16501/0204](#)

(5) Pliers for racks [REF. : 16821/5031](#)

(6) Embryo freezing with the IceCube

Autoseeding Preparation for freezing embryos [REF. : 16821/5019](#)

Autoseeding Rack*, capacity: 35 x 0.5 ml straws [REF. : 16821/5020](#)

Autoseeding Rack*, capacity: 43 x 0.25 ml straws [REF. : 16821/5021](#)

*Spacer included



Larger alternative:

IceCube 14M - capacity: approx. 2300 x 0.5 ml straws
with 12" touch screen monitor [REF. : 16820/7000](#)

without screen [REF. : 16820/6000](#)



FREEZING OF STALLION SEMEN

Freezing units

The freezing units are compact and easy to handle. They are made of a styrofoam box of high quality, an inner container of stainless steel and a floating rack. The stainless steel container is filled with liquid nitrogen. The rack keeps the needed distance between 0.5 ml or 0.25 ml straws during the first down phase, while it floats on liquid nitrogen. After that, the straws get manually immersed into the nitrogen.

- Distance between straws and liquid nitrogen level can be adjusted
- Fits 0.5 ml and 0.25 ml straws
- Low nitrogen consumption
- High quality styrofoam chest and stainless steel inner box
- Easy transport

(1) for 20 straws [REF. : 15043/0636](#)

(2) for 90 straws [REF. : 15043/0736](#)

Accessories

Loading block for 90 straws floating rack [REF. : 15043/0738](#)

Additional rack

(3) for freezing unit for 20 straws [REF.: 5015043/0600](#)

(4) for freezing unit for 90 straws [REF.: 5015043/0900](#)



Storage systems for straws

Short and long triangular cassettes

for 10/20 straws 0.5 ml or 28/56 straws 0.25 ml [REF. : 16981/xxxx](#)

Short and long flat cassettes

for 3/6 straws 0.5 ml or 6/12 straws 0.25 ml [REF. : 16980/xxxx](#)

Available in multiple colors.

Goblet, diameter 65 mm, white, 25/bag [REF. : 16965/0133](#)

Goblet, diameter 35 mm, white, 25/bag [REF. : 16935/0135](#)

Goblet, diameter 13 mm, white, 300/bag [REF. : 16913/0133](#)

Goblet, diameter 10 mm, white, 300/bag [REF. : 16910/0010](#)

Goblet, diameter 7.1 mm, white, 500/bag [REF. : 16907/0071](#)

Goblet canes,

for 2 x 10 mm goblets [REF. : 16965/6000](#)

for 2 x 13 mm goblets [REF. : 16965/6013](#)

Divider for goblets, 100/bag, 12 cm [REF. : 16967/0065](#)

Identification rod, 140 mm length

for 0.25 ml straw [REF. : 16903/0210](#)

for 0.5 ml straw [REF. : 16903/1210](#)





Semen storage and transport

Neopor transport box

Minitube transport box, made of highly insulating Neopor, complete with two ice-packs, two syringes (20 ml) and outer shipping carton, holding optimal temperature for approx. 45 hours.

Neopor transport box [REF. : 17229/0002](#)



Equitainer

World-wide proven system for cooling, storage and transport of fresh semen.

(1) **Equitainer**, comes with 1 tube-style isothermalizer, 2 freezer cans, and 6 tubes (50 ml)

[REF. : 17220/0015](#)

(2) **Freezer can** [REF. : 17221/0120](#)

(3) **Isothermalizer** for two 50 ml tubes [REF. : 17220/0016](#)

(4) **50 ml tube** [REF. : 17220/0017](#)



SEMEN STORAGE AND TRANSPORT

Cryo container (MVE storage container)

ET 20 with 6 canisters 279 x 73 mm; capacity: 3732 x 0.5 ml semen straws; normal working duration: 107 days; neck opening: 55 mm; total height: 627 mm; weight (full): 26 kg

REF. : 16503/2056

ET 35 with 6 canisters 279 x 108 mm; capacity: 3732 x 0.5 ml semen straws; normal working duration: 175 days; neck opening: 55 mm; total height: 679 mm; weight (full): 42 kg

REF. : 16503/3606

ET 40-10 with 10 canisters 279 x 73 mm, capacity: 16400 x 0.5 ml semen straws; normal working duration: 59 days; neck opening: 127 mm; total height: 670 mm; weight (full): 45 kg

REF. : 16503/3710



Other capacity/size on request.

Semen storage and transport



Vapor shipper

SC 4/2 with 1 canister 278 x 67 mm; capacity: 3.6 l liquid nitrogen, approx. 880 x 0.5 ml semen straws or 90 macrotubes; static holding time: 13 days; neck opening: 70 mm; total height: 468 mm; weight (full): 9.1 kg; IATA-compliant

REF. : 16504/2001

SC 4/3 with 1 canister 278 x 46 mm; capacity: 4.3 l liquid nitrogen, approx. 420 x 0.5 ml semen straws or 30 macrotubes; static holding time: 21 days; neck opening: 51 mm; total height: 492 mm; weight (full): 9.5 kg; IATA-compliant

REF. : 16504/3001

Protective shipping container for Vapor Shipper, made of plastic, IATA-compliant

REF. : 16504/3010

CryoCube™ Dry Shipper

Cryogenic shipping option for biological samples at -150°C in any orientation without sacrificing temperature.

Static holding time: 5 days; LN2 capacity: 2 l; 1 canister 127 x 35 mm; capacity: 182 x 0,25/88 x 0.5 ml straws; neck opening: 35 mm; overall dimensions: 305 x 305 x 305 mm (D x H x W)

REF. : 16505/0100





Insemination and diagnostics

Universal pipettes

- Suitable for liquid and frozen-thawed semen in straws
- Smooth round tip for gentle introduction
- Flexible shaft facilitates handling
- Precision tooled tip with inner cone for 0.5 ml straws to allow direct position of semen into the uterus and to ensure 100% semen delivery
- The reload system: if used with the AI stylet for 0.5 ml straws, the same pipette can be reloaded with consecutive straws in situ
- Finger handle with adapter to fit syringe and macrotube straw

Length: 57 cm

5/package [REF. : 17209/0005](#)

1/package, sterilized [REF. : 17209/0001](#)

Long pipette with very flexible shaft for deep intrauterine insemination

Length: 65 cm

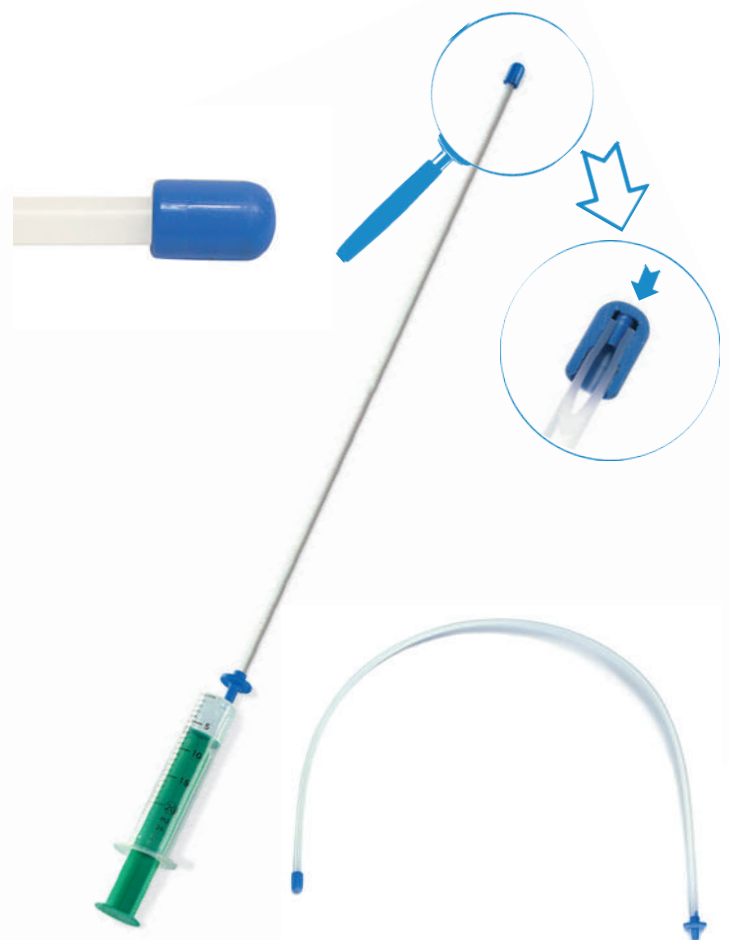
5/package [REF. : 17209/1165](#)

1/package, sterilized [REF. : 17209/1265](#)

Length: 75 cm

5/package [REF. : 17209/1175](#)

1/package, sterilized [REF. : 17209/1275](#)



INSEMINATION OF MARES

Deep intrauterine insemination pipette with inner catheter

For deep intrauterine insemination with small volumes of liquid semen, if straws can not be used. The pipette is equipped with an inner catheter to reduce the volume of the channel where the semen has to pass through.

Length: 65 cm

5/package [REF. : 17207/1165](#)

1/package, sterilized [REF. : 17207/1265](#)

Length: 75 cm

5/package [REF. : 17207/1175](#)

1/package, sterilized [REF. : 17207/1275](#)



Deep intrauterine kit

Includes deep intrauterine universal pipette with inner catheter, 5 ml syringe, supersensitive glove

Length: 65 cm [REF. : 17207/2065](#)

Length: 75 cm [REF. : 17207/2075](#)



Stylet for insemination of frozen semen

With Universal pipette plus stylet. Semen in 0.5 ml straws is directly placed into the uterus, ensuring 100 % semen delivery. The stylet is made of stainless steel and is provided with 2 knobs to pull out empty straws, thus the same pipette can be reloaded several times.

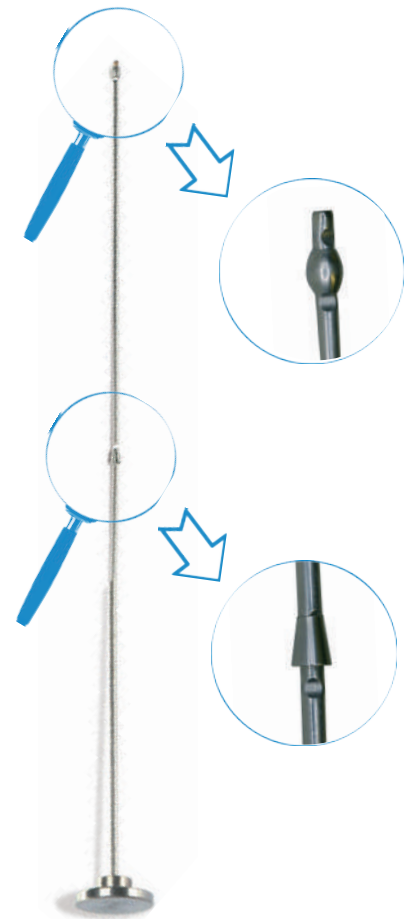
Stylet for pipettes

Flexible stylet for deep intrauterine or transcervical insemination with 0.5 ml straws and 2 knobs for pulling out empty straws

Length: 57 cm [REF. : 17209/1057](#)

Length: 65 cm [REF. : 17209/1065](#)

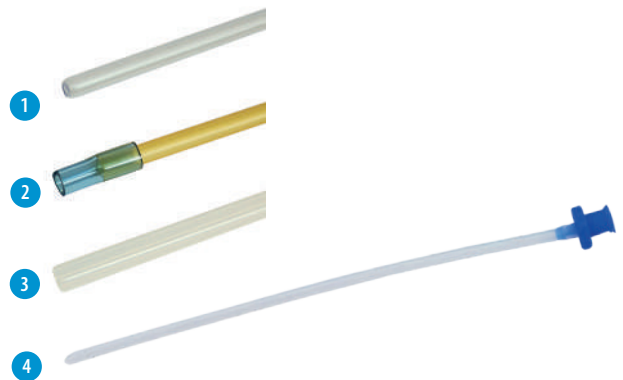
Length: 75 cm [REF. : 17209/1075](#)



INSEMINATION OF MARES

Insemination pipettes for liquid semen

- (1) Length: 60 cm, rounded tip,**
25/bag, fits luer syringe REF. : 17209/2000
- (2) With tubing, 1/bag, sterilized** REF. : 17209/2210
- (3) Length: 65 cm, larger diameter,**
25/bag, fits luer syringe REF. : 19290/1105
- (4) Semen transfer adapter for syringe,**
length 13 cm, 10/bag REF. : 17229/0020



Hygienic sheath

To protect ET or AI pipette during uterine passage, length: 62.5 cm (70/roll)

Disposable sheath REF. : 17209/5070



MiniCutter

- Precise cut of 0.25 and 0.5 ml straws
- Facilitates straight cut at exactly the right length, which helps to avoid semen loss
- Ergonomic shape, easy to keep clean

MiniCutter for straws REF. : 17062/0010



Thawing unit MT 30/54

- Electronic temperature control
- Central, built-in thawing chamber with lift
- Accuracy: 0.2°C
- Power supply: 12 V DC (car battery)

35°C REF. : 17044/0035

37°C REF. : 17044/0037

38°C REF. : 17044/0038

50°C REF. : 17044/0050

Transformer for thawing unit 12 V / 220 V REF. : 17165/1395

Thermometer for thawing unit REF. : 17049/0000



Insemination gloves

(1) Sensitive, green, 5 finger, shoulder length, 100/box REF. : 17080/0015

(2) Super-sensitive, transparent, 100/box REF. : 17080/0050

Single packed, sterilized, 50/package REF. : 17080/0250



DIAGNOSTIC TOOLS

Uterus culture swab

Consists of introduction pipette with pre-perforated cap for sampling without risk of contamination. Predetermined breaking point of the sample-protecting sheath. Includes two closing caps for transport of the swab to the lab. Swab may be inserted directly into AMIES transport medium to avoid dehydration of the sample. Individually packaged and sterilized.

Swab with AMIES transport medium REF. : 17214/2951

Swab without transport medium REF. : 17214/2950



Cytology brush

For picking up cells of the uterus of mares to perform cytology smears for immediate evaluation.

REF. : 17214/2960



Speculum for mares

(1) **Disposable speculum** made of cardboard, inside with reflecting aluminum coating, smooth front edge for gentle introduction, inner diameter: 3 cm, length: approx. 43 cm

REF. : 17210/0000

(2) **LED-light**, battery operated (up to 250 h), with clip for fixing, length: 96 mm

REF. : 17210/0010

(3) **Metal case** with lid and handles for sterilization and transport of speculum and cervical forceps, 560 x 230 x 120 mm (W x H x D)

REF. : 17215/0149

(4) **Polansky speculum** REF. : 17210/4200

(5) **Cervical forceps** according to Götze with lamp, 54 cm

REF. : 17212/0055

without lamp REF. : 17212/0054

Biopsy forceps, 66 cm length REF. : 17214/5066

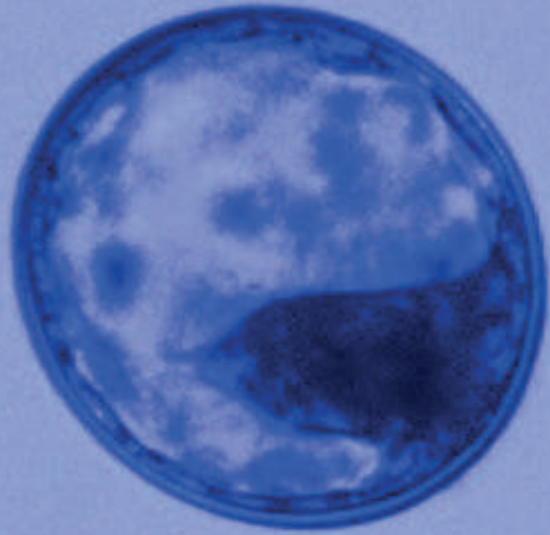


Colostrum refractometer

Determines the amount of immunoglobulin in the mare colostrum to ensure sufficient supply for the new born foal. Colostrum of good quality should be frozen for emergency use. Only one drop of colostrum is required for testing. No batteries, no consumables, easy handling. Case included.

REF. : 24400/0150





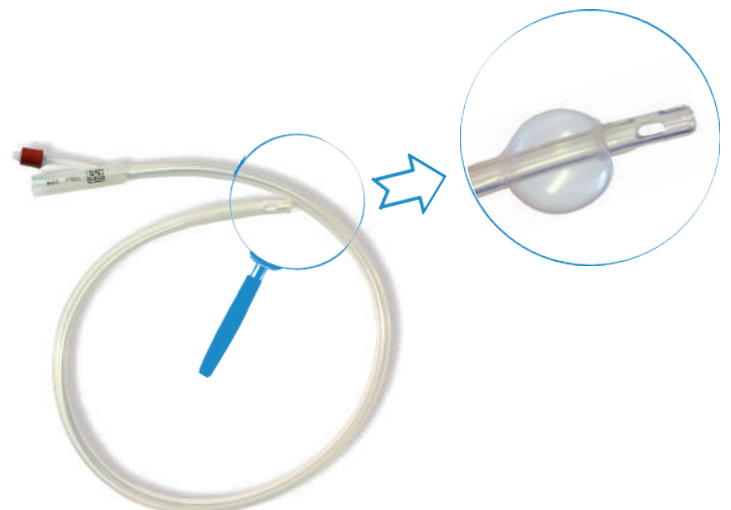
Embryo transfer and OPU

Embryo flushing catheters for mares

Made of silicone, sterilizable, length approx. 90 cm, Foley end, 2 large front ports, open ended, 100 ml balloon, sterilized.

The balloon, when inflated, facilitates tight closure of the cervix. All sizes allow high flow of flushing media in combination with high-flow Y-junction.

| | |
|--------------|--------------------------|
| CH 28 | REF. : 19009/0027 |
| CH 32 | REF. : 19009/0032 |
| CH 36 | REF. : 19009/0036 |



EMBRYO TRANSFER

Flushing tubing

Disposable Y-junction tubing with clamps, to be used in combination with any catheter. Tubing made of very smooth, flexible material. End for filter connection requires no extra adapter. Sterilized, 1/bag.

(1) High flow Y-junction tubing, spike port [REF. : 19982/0202](#)

Y-tubing for embryo collection with the **EmSafe** filter

(2) Luer end [REF. : 19011/0100](#)

(3) Foley end [REF. : 19011/0200](#)

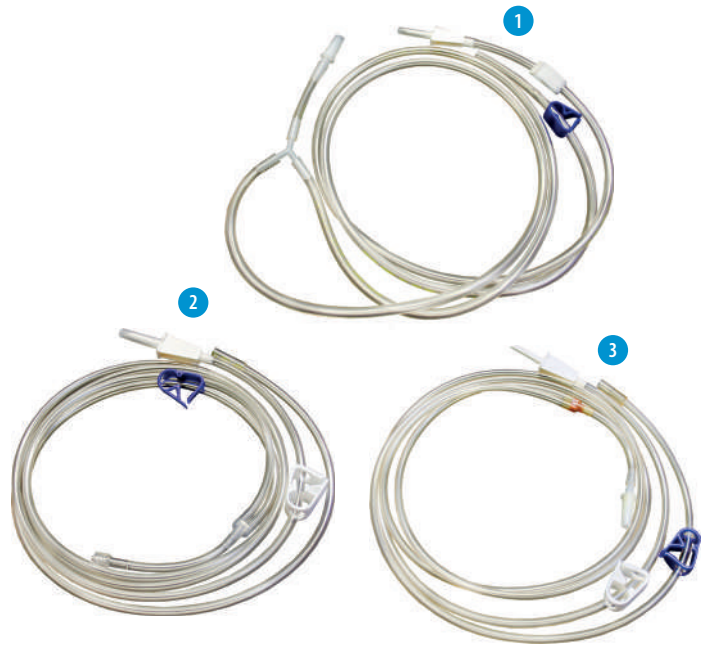
Y-tubing for embryo collection with the **MiniFlush®** filter

Luer end [REF. : 19011/0000](#)

Foley end [REF. : 19011/0001](#)

Luer adapter

for CH 28-38 catheters and for foley catheters [REF. : 19009/1238](#)



Filters for embryo collection

- All-in-one dual purpose filters and search dishes: embryos are recovered directly from the filter dish
- Secure fixation of the lid during collection and easy to open after collection (no screw cap)
- Integrated search dish engraved with a grid makes it easy to search and find embryos (mesh size is ideal for all bovine and equine embryo sizes)
- Filter mesh cannot get dry as it remains in contact with fluid

- Excess fluid is controlled and removed through outlet tubing with attached thumb clamp (entry hole is big enough to ensure the necessary flow speed of the flushing medium)
- Connection to all types of Y-tubing (bovine and equine) is possible
- Absolute tightness
- Sterilized

EmSafe

EmSafe is ideal for both large and small embryos. The filter system automatically holds a minimum level of 60 ml rinsing fluid in the dish. An angled filter mesh provides an optimal flow-through rate and the air vent in the lid is secured by a filter.

(1) EmSafe filter [REF. : 19010/6000](#)



MiniFlush®

Vertical all-in-one embryo recovery system with a large filter surface area. The vertical design provides higher flow rates and reduces plugging of the embryo filter. Due to its shallow design, the filter is perfectly suited for use with all microscopes even when the working distance is limited. Embryos are easily found with the aid of the highly visible grid.

With the MiniFlush® the entire flushing procedure can be completed without the need to monitor fluid levels as the filter automatically maintains a constant 20 ml volume.

(2) MiniFlush® filter [REF. : 19222/2000](#)



EMBRYO TRANSFER

Media for flushing and holding

EquiFlush

Ready for use, contains buffers, BSA or PVA and antibiotics

With BSA, 2 l REF. : 19982/6202

With PVA, 2 l REF. : 19982/6212

EquiHold - Applicable for

- holding embryos at ambient conditions
- transporting embryos
- washing and rinsing embryos
- loading embryos for transfer to recipient animal

Contains buffers, glucose, pyruvate, BSA, amino acids, growth factors and antibiotic

3 x 5 ml vials REF. : 19982/6250



Vitrification

Equine VIT-Kit

Vitrification is a proven method for cryopreservation of equine embryos. The VIT-Kit for equine embryos contains everything needed for vitrification of three equine embryos: equilibration medium (3 x VS1, 3 x VS2, 3 x VS3), 3 x diluent, 1 x syringe 1 ml, 1 x pipette tip, 4 x 5-well dish, 10 x 0.25 ml sterile straws, 10 x 0.5 ml sterile straws, 3 x ID-sticks, 1 x 10 mm goblet cane, 3 x 10 mm goblets

REF. : 19982/6251



Handling of embryos

Micropipettor for handling of embryos, easy and precise pipetting by handling wheel, for all sizes of capillary tubes up to 1 ml

Model A REF. : 19022/0000

Model B REF. : 19022/0002

Glass capillary tube, 250/package

20 µl REF. : 19022/0020

50 µl REF. : 19022/0050

(1) Steripette for embryo handling, 55 mm, individually packed, sterilized, 50/package, for use with 1 ml insulin syringe

REF. : 19025/0050

(2) Disposable syringe, 1 ml, Luer end, sterilized REF. : 19025/0000

(3) Embryo culture dish with lid, sterilized, 5 wells, rounded well edges, mouse embryo batch tested, 4/bag REF. : 19021/0005



EMBRYO TRANSFER

Stereo microscope

Stereo zoom microscope, mirror for improved visualization of zona pellucida, total magnification from 10x to 70x, eye-pieces 10x, 110 V/60 Hz or 230 V/50 Hz

Stereo microscope, binocular [REF. : 12014/0000](#)

Stereo microscope, trinocular [REF. : 12014/1000](#)

Accessories

Heated stage, 180 x 180 x 10 mm [REF. : 12055/0003](#)

Control unit HT 50, adjustable temperature, digital display [REF. : 12055/0050](#)



Embryo transfer with 0.5 ml straws

Sheath for equine embryo transfer, front end opening, individually packaged, 10/package, sterilized

[REF. : 19290/1050](#)

Sheath for equine embryo transfer, side openings, individually packaged, 10/package, sterilized

[REF. : 19290/1060](#)

Finger support and ring, for use with sheath for equine ET and AI stylet 17209/1065

[REF. : 19290/1048](#)

Equine embryo transfer pipette, metal tip with side opening, flexible, 1/package, disposable, sterilized, use with AI stylet 17209/1065

[REF. : 19290/1065](#)

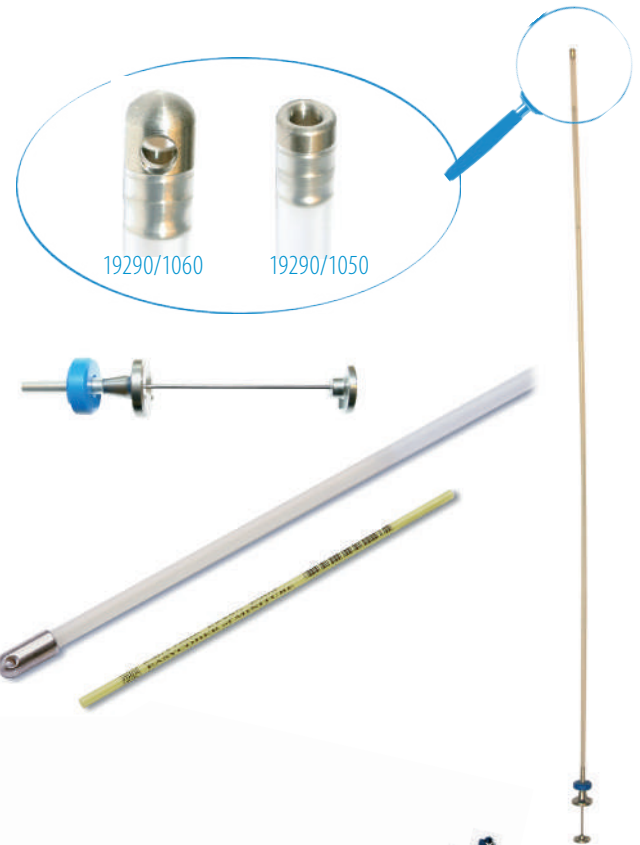
Inner catheter for equine embryo transfer pipette, to flush embryo into the uterus with approx. 2 ml volume, no need to load it into a straw

[REF. : 19290/1066](#)

Stainless steel ET instrument

Sterilizable transfer instrument for 0.5 ml straws, 1 side outlet, length 55 cm, screw-off tip

[REF. : 19290/0000](#)



EMBRYO TRANSFER AND OPU

Embryo transfer with 0.25 ml straws

Deep intrauterine ET/AI set, with finger support, stylet, fixation rings
REF. : 17015/0100

Sheath for equine ET/AI, with 0.25 ml straws, side opening, for usage with stylet 17015/0100, sterilized, individually packaged, 10/bag
REF. : 17015/0660



Embryo transfer > day 8

ET/AI Pipette, rounded ends, fits luer syringe, sterilized, 1/bag, length 65 cm
REF. : 19290/1101



Straws

0.5 ml straw, transparent, sterilized

| | |
|--|-------------------|
| with sealing ball, 1/package | REF. : 19043/0001 |
| with sealing ball, 10/package | REF. : 19043/0010 |
| without sealing ball, 1/package | REF. : 19043/1011 |
| without sealing ball, 10/package | REF. : 19043/1010 |
| length 90 mm, without wick, 10/package | REF. : 19044/9110 |

0.25 ml straw, transparent, sterilized, 10/package

| | |
|--|-------------------|
| with ID rod seal in many bright colors | REF. : 19040/00xx |
| with glass sealing ball | REF. : 19041/0010 |
| without seal | REF. : 19042/0010 |



Minitube OPU Media

EquiPlus OPU Recovery Medium, 500 ml of ready-to-use medium, contains BSA, for collection of equine oocytes
REF. : 19982/2281

Heated aluminum block for 50 ml tubes
REF. : 23361/3200



Ultrasonic device LOGIQ® V2

- Portable, easy to use ultrasound system for linear and convex sector ultrasound providing excellent image quality
- High quality documentation and data transfer system
- Various operating modes, standard features and system options
- High-resolution LCD monitor with high angle of sight
- Keyboard equipped with trackball and illuminated buttons
- Dimensions: 12 x 40 x 37 cm (H x L x W)
- Weight: 6 kg with battery
- 100-240 VAC / 50/60 Hz



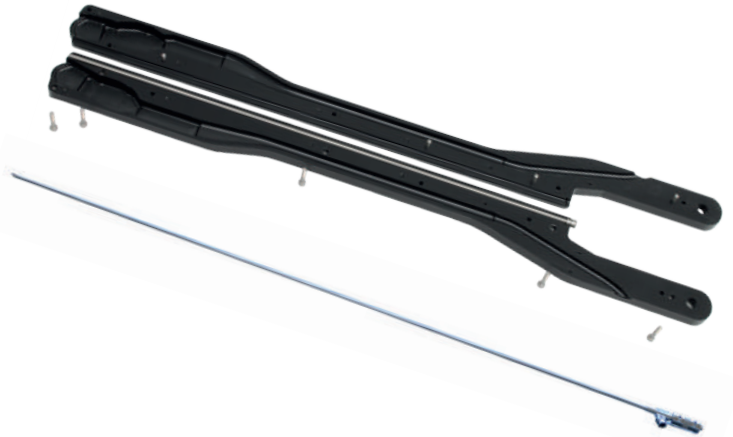
Ultrasonic device LOGIQ® V2 REF. : [23360/0000](#)

Convex sector probe, 6.0 - 10.0 MHz REF. : [23360/0002](#)

Endo-linear rectal probe, 5.0 - 10.0 MHz REF. : [23360/0003](#)

Ultrasound probe holder

- Probe holder has a needle guide included and is used with the double lumen needle: the two spaces allow simultaneous or alternating aspiration and injection of fluids into and from the follicles
- OPU needle is connected to the aspiration and flushing pump for equine OPU, Ref. 23362/0002 (230 V) or 23362/0003 (115 V)



Probe holder for GE probe REF. : [19009/3100](#)

Probe holder for Esaote probe REF. : [19009/3101](#)

Probe holder for Sonosite probe REF. : [19009/3102](#)

Probe holder for BCF/Mindray probe REF. : [19009/3103](#)

Cover for probe holder, 144/package REF. : [23360/1260](#)

Double lumen needle, 12 G, 25"
consists of outer needle and inner cannula REF. : [19009/3105](#)

Replacement needle, 12 G, 25" REF. : [19009/3106](#)

OPU pump for follicle aspiration and flushing

- Two pumps and a warming block are combined into one unit for convenient oocyte aspiration
- Pressure level and hysteresis are programmable by the user
- The pump is operated by foot switches
- Operating voltage: 220-240 V~, 50-60 Hz; also available for 115 V (Ref. 23362/0003)

OPU pump for follicle aspiration and flushing REF. : [23362/0002](#)

Stopper assembly
Snugly connects to 50 ml tubes, 1/package REF. : [23360/1100](#)



TRAINING AND SERVICE

Training and education

Minitube cooperates with universities and leading Equine studs. The collective experience and knowledge is incorporated into our seminars where the latest technologies and practices are demonstrated and trained with course participants. With the courses being interactive workshops, presentations, discussions, demonstrations and practical work go hand in hand.

- Semen processing in the laboratory
- Embryology / IVF
- Equine AI and ET
- Deep intrauterine insemination in horses

Besides these standard seminars, Minitube also offers individual seminars upon request. All participants in our seminars receive valuable seminar documentation and a certificate of participation.

Please contact us to get more information:

seminars@minitube.de



Mobile lab service

Minitube Middle East offers unique professional lab service to customers particularly in remote areas. The Mobile Lab is a van equipped with high-quality Minitube equipment to analyze and preserve/freeze animal semen or embryos.

Minitube Middle East offers the service to customers in the United Arab Emirates, Saudi Arabia and Oman, in regions which otherwise have no access to a professional laboratory for semen and embryo preservation.

Please contact us for further information about the service and if you would like to discuss how to construct your own mobile laboratory:

minitube@minitube.de



Minitüb is an ISO 9001:2015 certified company.