

# *iScan 2 MULTI*

*As versatile as you are*

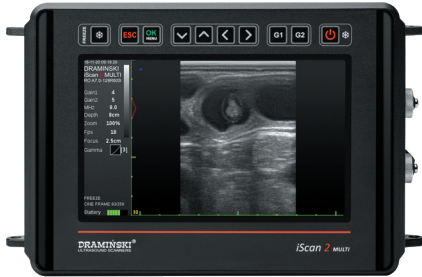


- For all large animal veterinarians
- Rugged and very light-weight
- Quick cleaning and disinfection
- Interchangeable probes



As versatile as you are

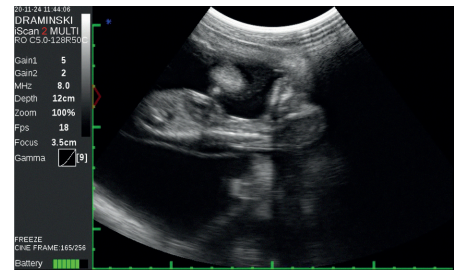
**iScan 2 MULTI**



Large, bright and easy to read display



Greater comfort of working with OLED goggles



Outstanding imaging quality

**Types of probes working with iScan 2 MULTI:**

**ABDOMINAL:**

- Convex 3.5 MHz R60
- Convex 5.0 MHz R50
- Linear 10.0 MHz L40
- Microconvex 6.5 MHz R15
- Microconvex 6.5 MHz R11

**RECTAL:**

- Linear Rectal 7.0 MHz L60
- Convex Rectal 5.0 MHz R60
- Microconvex Rectal 5.0 MHz R20

**SPECIALIST:**

- OPU 6.5 MHz R11
- Linear Backfat 3.7 MHz L150
- Linear Backfat 3.7 MHz L180
- Linear Endocavitator 7.5 MHz L40



**Technical data**

<b>Presets</b>	Reproductive Tract, Pregnancy, Fetal sex, Late pregnancy, Custom preset to save
<b>Used technologies</b>	LuciD – image noise reduction and contrast enhancement
<b>Measurement</b>	Distance, Area, Volume, Grid, Age tables (Cow CRL, Cow BPD, DSG Horse, DO Horse, CRL Sheep, Lama BPD)
<b>Image refreshing</b>	Up to 28 frames / sec
<b>Memory</b>	200 Image, 200 Cine loops
<b>Data export</b>	Yes (to an external USB drive)
<b>File format</b>	PNG, AVI
<b>Display</b>	7" LCD LED
<b>Dimensions</b>	256 x 165 x 69 mm
<b>Device weight</b>	1520 g body only, 2640 g body with battery and probe
<b>Probes</b>	Interchangeable electronic broadband
<b>Recognition of probes</b>	Automatic
<b>Working time on one battery</b>	Up to 7 hours (continuous operation on a full charge)
<b>Control</b>	Splash-proof keyboard
<b>Accessories</b>	Shade cover, Goggles, Stand-off, Rectal probe extension for cattle or sheep.



Interchangeable probes and battery



Rugged, light-weight, comfortable

