

Woodcast: a Game Changer for Canine Casting



What is Woodcast?

Woodcast is a non-toxic, mouldable & remouldable material ideal for veterinary orthoses.

The heated material moulds easily to any anatomical shape and holds its form very quickly. It is self-adhesive and can be layered, providing limitless casting and splinting possibilities.

The light, thin, and breathable material provides great comfort for animals and doesn't need to be removed for X-rays.



How to: Carpus/Tarsus Splint

1

Measure front leg circumference



2

Draw shape



3

Cut and fit



4

Place on Woodcast and cut out



5

Apply to leg and mould to fit



6

Fit around carpus, ensure foot can dorsal flex



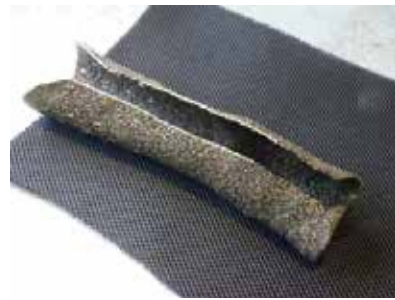
7

Trim off excess



8

Measure AirPadding and stick to inside of splint



9

Apply edging tape



10

Fit to animal with Hook & Loop

