



VINNO Technology (Suzhou) Co., Ltd.

5F, A Building, No.27 Xinfra Rd, Suzhou Industrial Park, 215123, China

Tel: +86 512 62873806

Fax: +86 512 62873801

Email: vinno@vinno.com

Website: www.vinno.com

VINNO reserves the rights to revise the technical specification if needed.

DSVET

High-End Compact Veterinary

Color Doppler Ultrasound Diagnostic System

A Smart and Easy-to-Use Device to Care for Animals





VINNO D5-VET is a highly integrated smart solution with a cutting-edge structure designed to provide the portability required by veterinary professionals in various scenes. It is built on the revolutionary RF platform, to deliver abundant information and highly accurate images. It provides users with convenient and quick access to outstanding images, as well as professional scanning and analysis.

Thanks to the processing algorithms developed on a large amount of RF data, it provides images with ultra-high contrast and resolution. The platform also supports the next-generation digital broadband up to 25MHz and high-resolution beamformers, providing excellent processing performance with a high channel density.

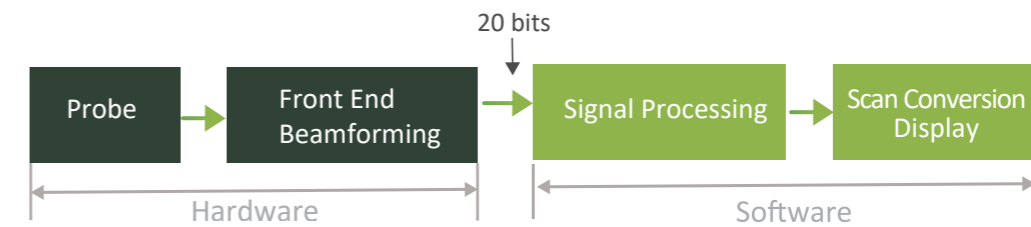


Revolutionary Platform

The VINNO D5 VET Series is built on an innovative and simplified data platform that combines the traditional beamforming integration with front-end data processing. This innovative workflow enables convenient and institutive operations, making it an ideal choice for various scenarios.

VINNO's Revolutionary RF Ultrasound Platform

RF signal data processing platform for better resolution and definition



Superior Image Performance

Speckle noise reduction (VSpeckle)

Based on the RF metadata platform, it integrates the detection data obtained by the system to produce superior images with higher contrast and clear boundaries.

Fusion imaging (VFusion)

Sound beams are emitted from different directions, and reflected sound beams are matched through powerful processing capabilities to produce images with high signal-to-noise ratio on the display.

A Cost-Effective Choice with High Performance



15.6-inch wide-angle LCD display panel



Wide viewing angle of up to 150 degrees



8-inch high-sensitivity touch screen that can be operated while wearing sterile gloves



One can be expanded to three



Professional and seamless workflow with built-in soft keyboard and external keyboard, making user input much easier



Reasonable and convenient keyboard layout, support more smooth operation



Outfitted with a dedicated and highly portable trolley

facilitates device switching, supporting up to 3 probe connections. Support more probes available

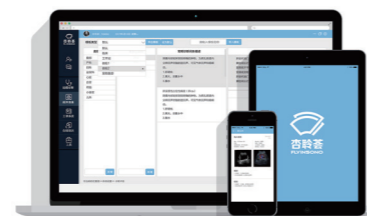
FLYINSONO Remote Solution

VINNO provides users not only solid ultrasound system but also a Lifetime Continuous Learning Plan to always keep your edge sharp. Sign up for Remote Trainings with topics you're interested in further-learning.

Furthermore our service team is happy to support you for after-sales servicing immediately by remotely done on-line. We try the best to maximize your return of the investment, all thanks to VINNO's exclusive FLYINSONO solution.



VINNO SYSTEM FLYINSONO



FLYINSONO

Real-time consultation

Remote training

Time-sharing consultation

Remote maintenance



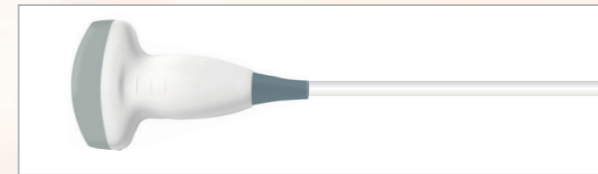
G2-5C
Broadband
Curved Array

Applications
Abdomen, Repro, Ovary



F4-12L
Broadband
Linear Array

Applications
Abdomen, Tendon,
Small Parts, Eyes



F2-5C
Broadband
Curved Array

Applications
Abdomen, Repro, Ovary



G1-4P
Phased Array

Applications-Cardiac



G4-9M
Broadband Micro
Convex Array

Applications
Abdomen, Cardiac



G4-12LV
Broadband
Linear Array

Applications - Repro



G4-12P
Phased Array

Applications - Cardiac



G3-10PX
Phased Array

Applications - Cardiac



G3-10P
Phased Array

Applications - Cardiac



Image Gallery

