

D550VET

High-end color Doppler ultrasonic system for animals
Perfect Experience of Fulfilling Expectations with Great Value



VINNO

VINNO Technology (Suzhou) Co., Ltd.

5F, A Building, No.27 Xinfu Rd, Suzhou Industrial Park, 215123, China

Tel: +86 512 62873806

Fax: +86 512 62873801

Email: vinno@vinno.com

Website: www.vinno.com

VINNO reserves the rights to revise the technical specification if needed.

VINNO

D550VET

Equipped with the world's first RF platform to process the RF metadata without any information loss, results in delivering images with richer details for a more accurate diagnose. Fulfill the expectations of veterinarians to:

- » Easily acquire excellent images with super resolution and high contrast.
- » See superficial details that have never been so clear with 23MHz linear transducer.
- » Be more diagnose confident for critical cases with micro-lesion visualization.

VFusion

Multi-angle space synthesis, more organ details are available, eliminate the false image caused by the Angle.

VSpeckle

A new generation of adaptive noise and pseudo-image removal image processing technology, improve organ boundary clarity.

Triplex

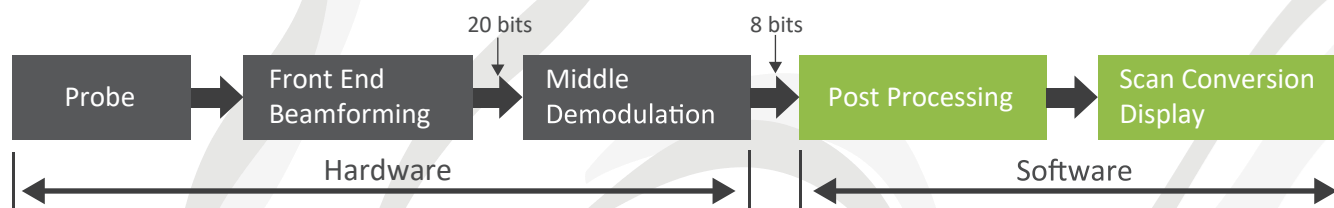
Fully independent, tri-synchronous mode operation, simplified doppler operation.

GPU+ processor

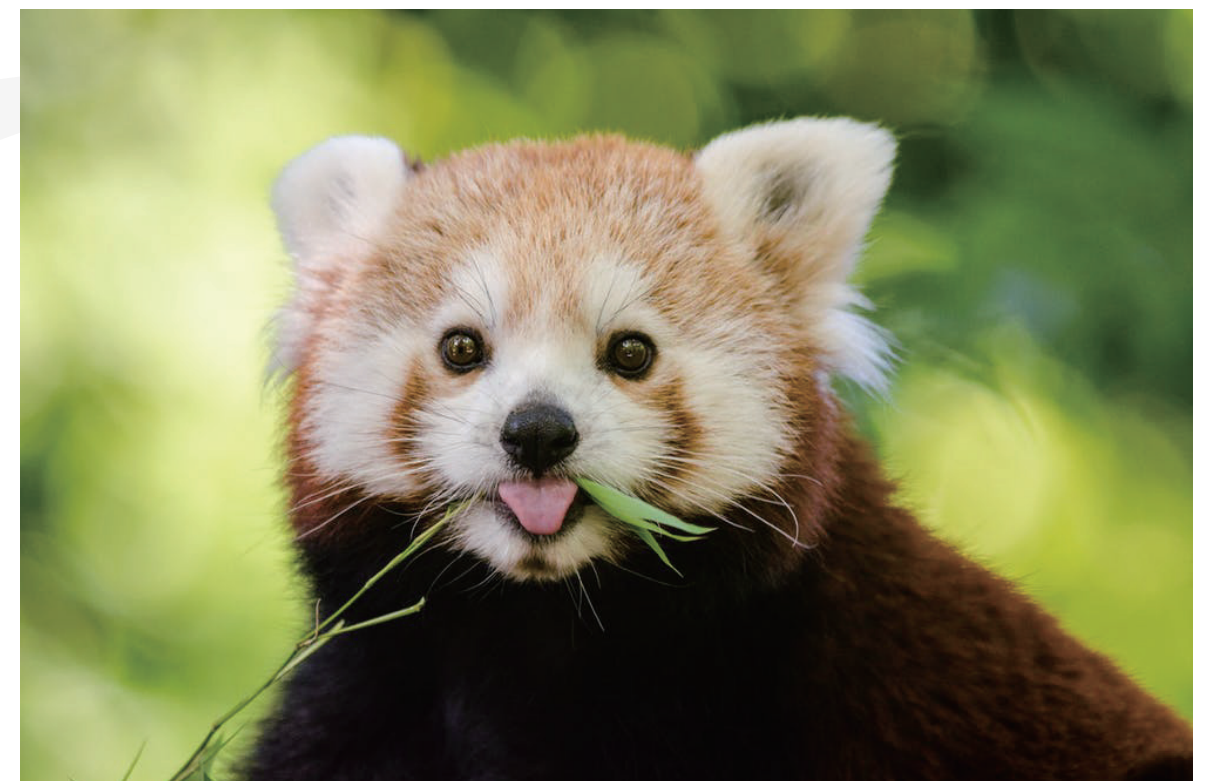
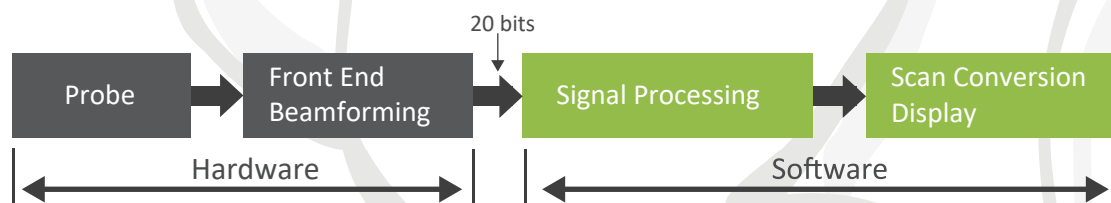
Supports advanced imaging processing. For its outstanding innovation, provide help for your accurate diagnosis.

VINNO'S RF Platform processing

» Traditional ultrasonic processing



» VINNO's RF Platform processing



High design performance

21.5 inch HD monitor with articulating-arm, and up to 80mm height-adjustable operation panel.

High sensitivity 10-inch touch panel
The height of the operating table is adjustable within the range of 250mm.

Front and rear two groups of universal wheel hub design, easy to move around.
4 fully activated probe ports enable probe switch with a click on the touch panel.

4 probe cups, removable for easy cleaning

The operation panel can be lifted for 250mm lifting

Front and rear two groups of universal wheel hub design

21.5 "high resolution flat panel display, full 360 degrees without dead angle adjustment display position

10-inch touch panel with high sensitivity

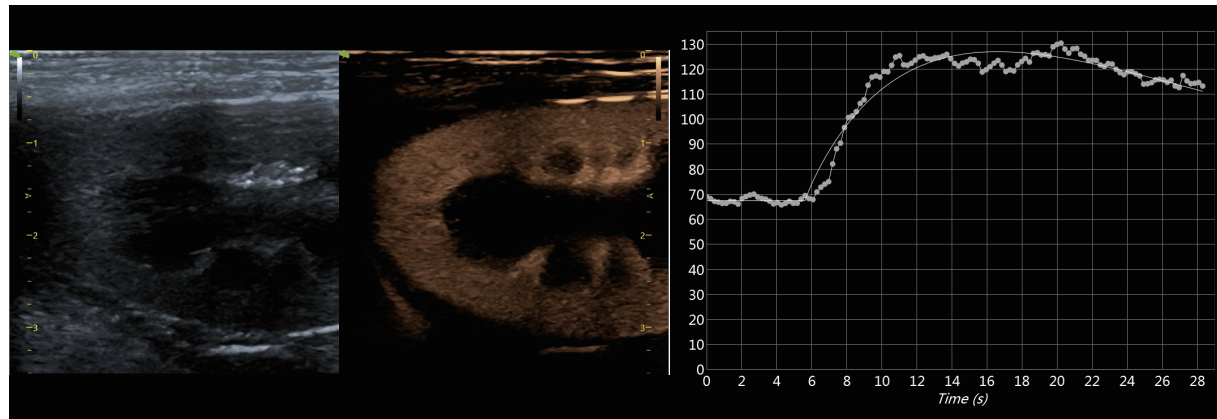
Supports 4 fully activated probe ports for easy insertion



Advanced Features

» CBI imaging

Gold standard analysis scheme for ultrasonic diagnosis.

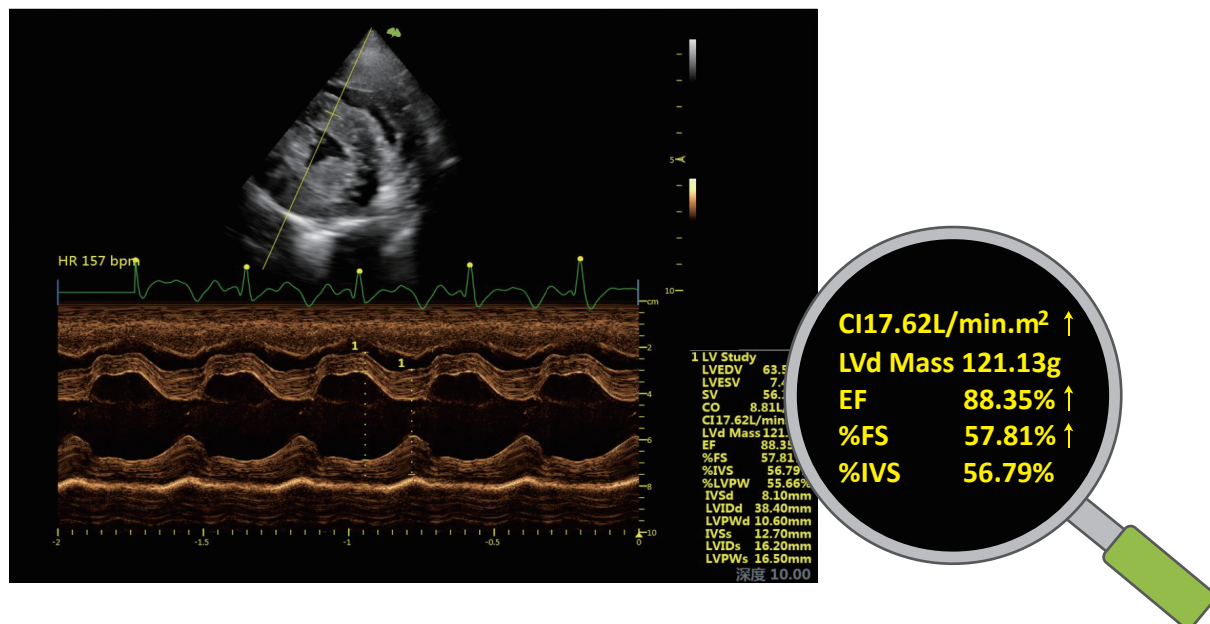


» Elasticity imaging

Suitable for most kinds of tissue exploration, to lay foundation for further investigation.

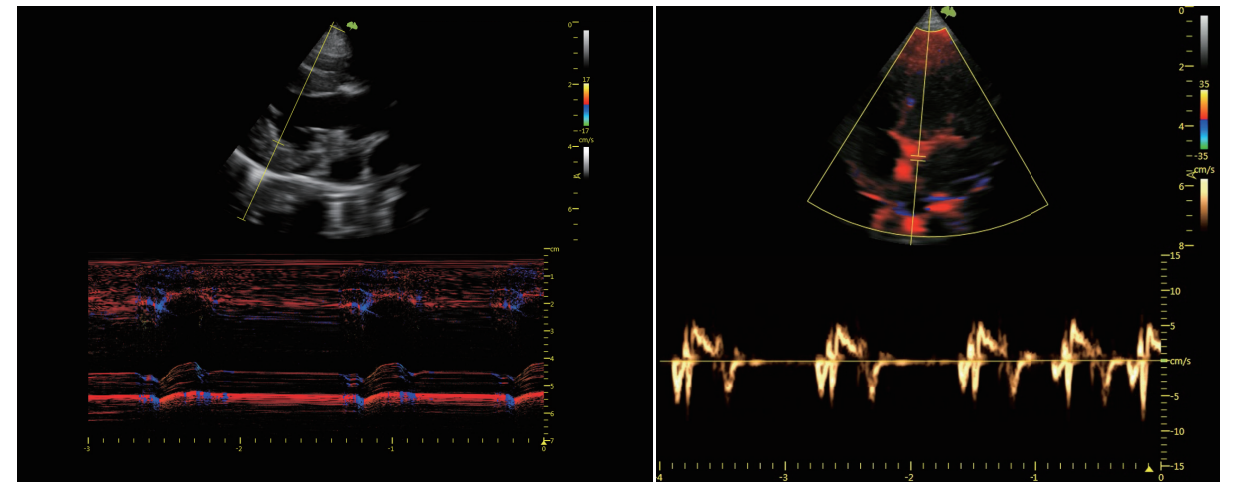
» VCQ Function

The function of the heart is automatically evaluated. Automatically evaluates the result of the cardiac measurement, by indicating the result whether it's above or below the normal value.



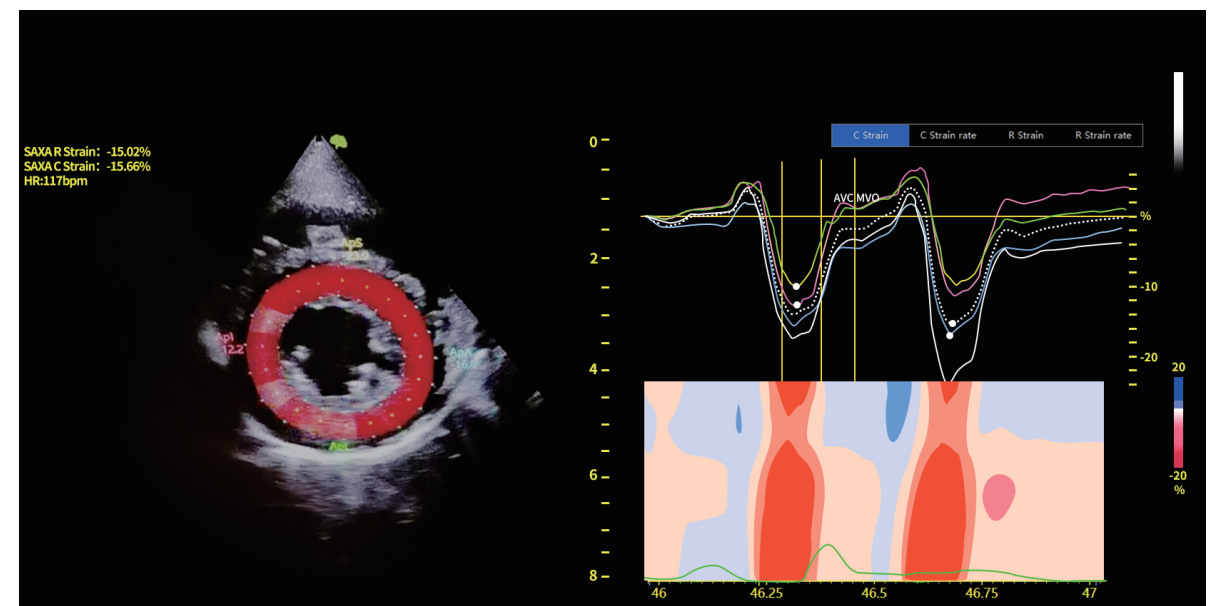
» TDI/TVM

To provide more professional heart tissue movement speed analysis.



» Strain imaging

Myocardial tissue tracking imaging, comprehensive dynamic real-time analysis tools.



FLYINSONO Remote Solution

VINNO provides users not only solid ultrasound system but also a Lifetime Continuous Learning Plan to always keep your edge sharp. Sign up for Remote Trainings with topics you're interested in further-learning.

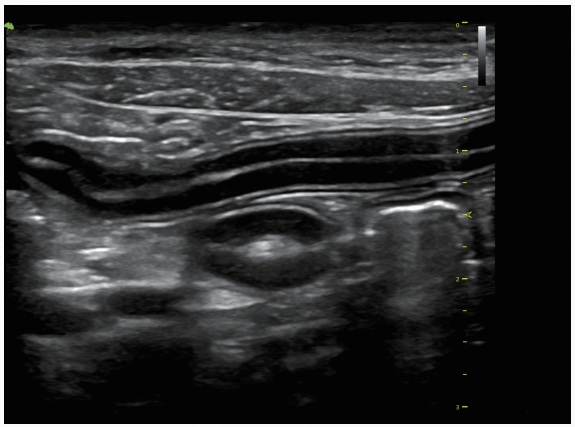
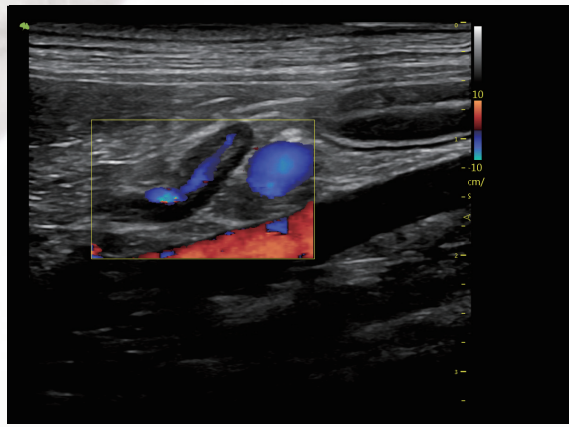
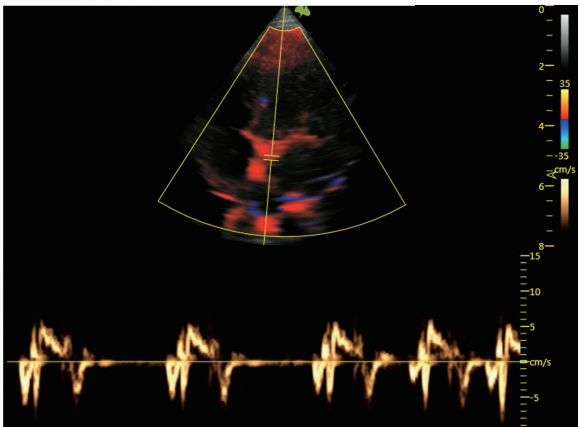
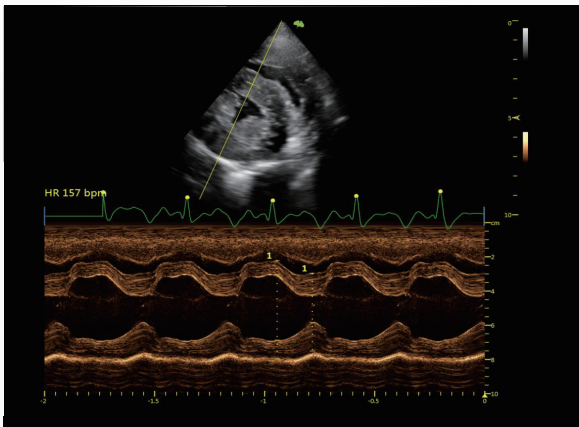
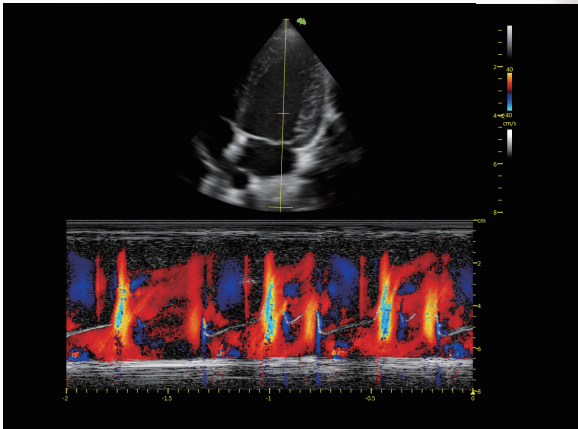
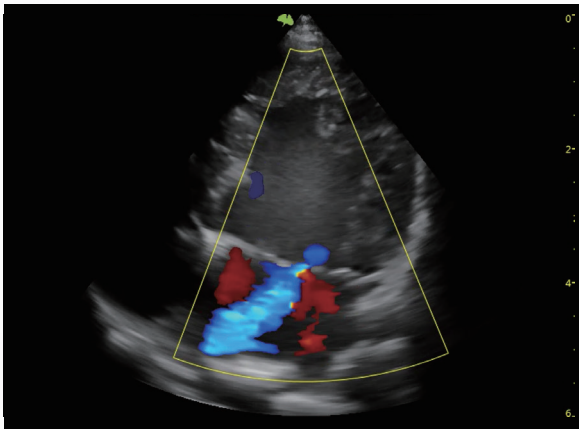
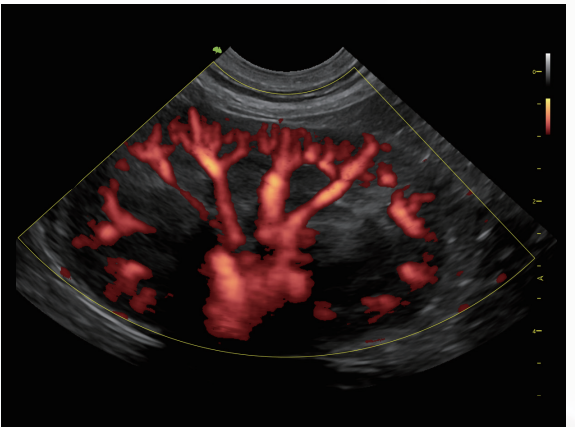
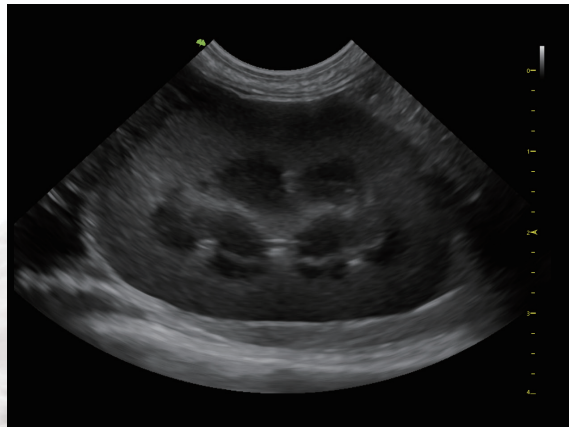
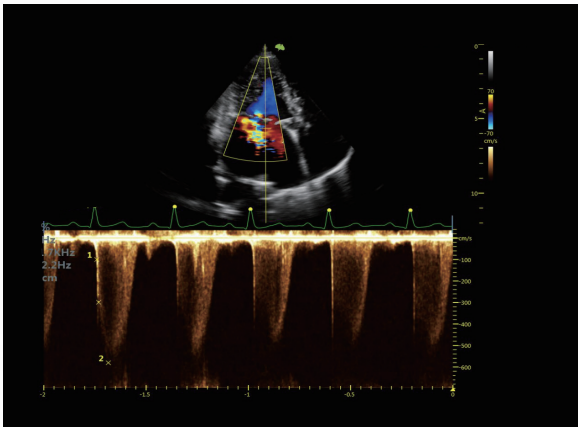
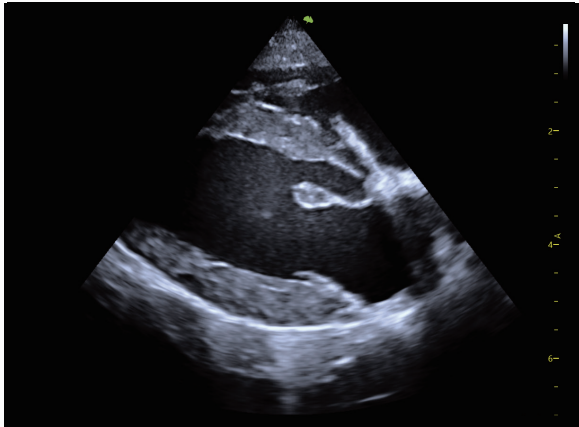
Furthermore our service team is happy to support you for after-sales servicing immediately by remotely done on-line. We try the best to maximize your return of the investment, all thanks to VINNO's exclusive FLYINSONO solution.



- Real-time consultation
- Time-sharing consultation
- Remote training
- Remote maintenance



Imaging Gallery





G2-5C
Broadband Curved Array

Applications
Abdomen, Repro, Ovary

X6-16L
Broadband Linear Array

Applications
Abdomen, Tendon, Small Parts, Eye

X4-12L
Broadband Linear Array

Applications
Abdomen, Tendon, Small Parts, Eye

G1-4P
Phased Array

Applications
Cardiac

G4-9M
Broadband Micro
Convex Array

Applications
Abdomen, Cardiac

X10-23L
Broadband
Linear Array

Applications
Lab, Abdomen,
Small Parts, Eye



X2-6C
Broadband
Curved Array

Applications
Abdomen, Repro,
Ovary



F2-5C
Broadband
Curved Array

Applications
Abdomen, Repro,
Ovary



F4-12L
Broadband
Linear Array

Applications
Abdomen, Tendon,
Small Parts, Eye



S1-6P
Phased Array

Applications
Cardiac



G3-8M
Broadband Micro
Convex Array

Applications
Abdomen, Cardiac



G3-10P
Phased Array

Applications
Cardiac



G3-10PX
Phased Array

Applications
Cardiac



G4-12P
Phased Array

Applications
Cardiac



G4-12LV
Broadband
Linear Array

Applications
Repro

