

**DRAMIŃSKI**<sup>®</sup>  
ULTRASOUND SCANNERS

[www.draminski.com](http://www.draminski.com)

# Dramiński **BLUE**

*See. Touch. Feel the difference.*

**MADE IN  
POLAND**



[www.vetman.fi](http://www.vetman.fi)



Vetman customer service

+358 2 7221 222

Vetman

[vetman@vetman.fi](mailto:vetman@vetman.fi)

# BLUE

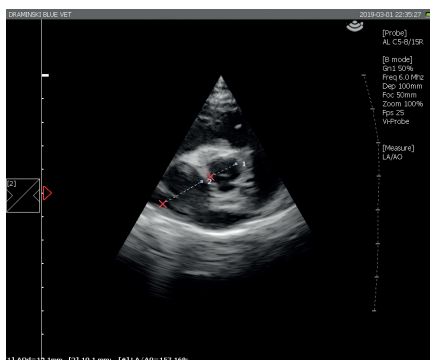


- Highly responsive and precise
- Detailed examinations and ECC protocols
- Doppler: Colour, Power, Pulse Wave
- For 24/7 hospitals and small practices

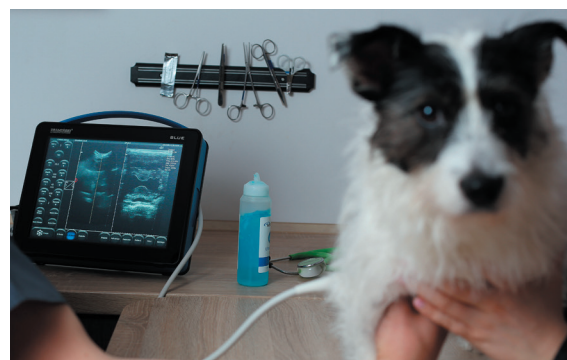
## Portable ultrasound scanner for the diagnosis of small animals

means more examinations and more detailed information about the patient.

The ultrasound scanner provides fast and accurate treatment planning, which translates into an increased customer satisfaction and more profits for clinics.



*Dog – heart. Examination using the Vi-Probe function.*



### Technologies of the future:



**LuciD™** a system that enhances contrast, sharpness and tissue differentiation making images readable and easy to interpret.



**D-Curve™** helps distinguishing between slight echogenicity differences – a tone transfer curve ideally suited to the human eye perception.



**Vi-Probe™** is a unique technology that provides phased array image type on the convex probe and convex image on the linear probe. BLUE provides enhanced vision, despite a small acoustic window.

### Technical data:

<b>Imaging modes</b>	B Mode, B+B Mode, 4B Mode, B+M Mode, Doppler: Colour, Power, Pulse Wave
<b>Operating frequency</b>	1-14 MHz (probe type dependant)
<b>Frame memory and cine loop viewing</b>	60 GB
<b>Data recording</b>	Images and cine loops with description, patient data and date
<b>Data transmission to a data storage device</b>	Via USB interface
<b>Exported file format</b>	PNG for images, AVI, MP4, MOV for cine loop
<b>Number of probe ports</b>	One port, automatic probe recognition
<b>External ports</b>	2 x USB, 2 x LAN, 1 x HDMI
<b>Screen</b>	12" LED LCD display
<b>Feature control</b>	Touch panel
<b>Boot up time</b>	Approx. 25 s
<b>Continuous operation time with battery supply</b>	Approx. 2 hours 30 min.
<b>Battery charging time</b>	Approx. 4 hours.
<b>Accessories</b>	Wheel stand
<b>Operating temperature</b>	From -15 °C to +45 °C
<b>Recommended storage temperature</b>	From 0 °C to +45 °C

