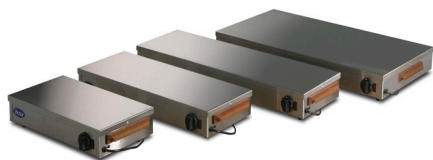


Heated Display Units



Hot plates - HP

HP

Targeting all needs and budgets the Victor range of hot plates are designed for the simple yet effective presentation of heated food

wooden carrying handle

With

Model No: HP1 - 600 x

300 x 115mm Model No: HP2 - 800 x 300 x 115mm Model

No: HP3 - 1000 x 300 x 115mm Model No: HP4 - 1000 x

500 x 115mm

Specifications

Model ----- size ----- loading HP1 ---- 600 x 300 x 115mm high --- 0.3kW HP2 ---- 800 x 300 x 115mm high --- 0.4kW HP3 ---- 1000 x 300 x 115mm high --- 0.85kW HP4 ---- 1000 x 500 x 115mm high --- 0.85kW **Electrical Connection** 220V/240V 1 phase 50Hz Cable: 2 metres with 13 amp plug fitted
Construction Top: Stainless Steel, Exterior: Stainless Steel

Features

Standard Features:

- Adjustable thermostatic control to base
- Removable wooden carrying handles
- All stainless construction

Victor Manufacturing Limited

Lonsdale Works, Gibson Street, Bradford, BD3 9TF, West Yorkshire, England
Tel: +44 (0)1274 722125 Email: email@victormanufacturing.co.uk
Copyright © 2014 Victor Manufacturing Limited