

**INSTRUCTIONS FOR USE AND INSTALLATION  
PIZZA OVENS  
PZ 430 S / PZ 430 D / PZ 4302 D**



**Made in France**

# PIZZA OVENS

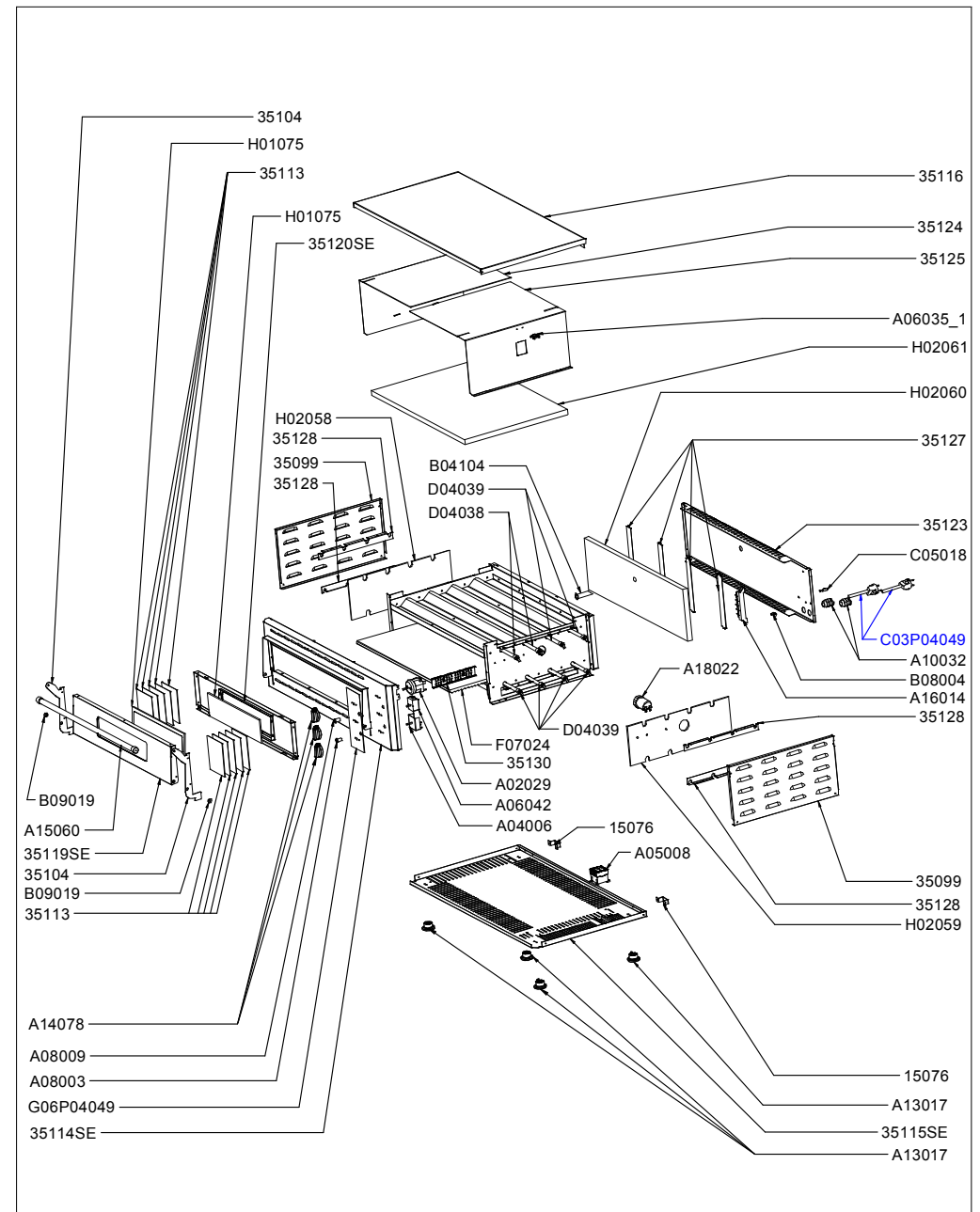
## PZ 430 S / PS 430 D / PS 4302 D

Congratulations for the acquisition of this upmarket appliance made in France. You chose an appliance which alloys the best technical qualities with a big user-friendliness. We wish you the biggest contentment

### 1. SECURITY INSTRUCTIONS

Please respect these instructions scrupulously to avoid any risk of fire, electric shock, scald or other wounds and damage. During the use of this appliance, fundamental circumstances of security must always be noticed, such as:

- Take into account the instructions and keep it systematically with the appliance.
  - Install the appliance always in instructions respect. A 10 cm distance minimum with the partition or the wall is necessary.
  - Protect the appliance from direct light of the sun, frost and humidity.
  - Never leave the appliance within the reach of children or disabled persons without surveillance.
  - Never move the appliance when it is working or when the surfaces of cooking are still hot.
  - Check that the appliance is definitely off before connecting it up or disconnecting it.
  - Do not touch the hot surfaces of the appliance. The temperature of the hot surfaces can be very important when the appliance is working. Always use handles and control knobs.
  - Do not use the appliance for other functions than determined use.
  - Do not leave the electrical cord in contact of hot surfaces.
  - The appliance should not be used close to combustible materials.
  - During use, look after not to obstruct hearings of aeration of the appliance
  - To avoid any electric shock, never plunge the appliance, the cord or plug in water or quite other liquid.
  - If the cord is harmed, it must be replaced by the producer, his after sale service or persons of similar skills to avoid any risk.
  - Entrust repairs only to a skilled person.
  - Use only spare parts of origin.
- At the end of cooking, before cleaning the appliance, do not forget to disconnect it



PZ 430 2D (2 cordons)				Vue éclatée	
DT25_2	Date : 04/09/2014	Dessiné par : C.Gu	Approuvé par : S.Grenon	Date : 04/09/2014	Indice A

CODE	QTE	PIECE	SPARE PART
15076	2	BUTEE ARRIERE	BACK TOP
35099	2	FLASQUE A QUIE PZ 430 S/PZ 4302 D	SIDE CASING PZ 430 S/PZ 4302 D
35104	2	COMPAS DE PORTE G/D PZ 430 S-PZ 430 D-PZ 4302 D	LEFT/RIGHT DOOR COMPASS PZ 430 S-PZ 430 D-PZ 4302 D
35113	10	CONTRE POIDS PZ 430 S/PZ 430 D/PZ 4302 D	AGAINST WEIGHT PZ 430 S/PZ 430 D/PZ 4302 D
35114SE	1	PLATINE AVANT PZ 4302 D	CONTROL PANEL PZ 4302 D
35115SE	1	S/E SOCLE PZ 4302 D SAV	BASE PZ 4302 D ASSEMBLY
35116	1	DESSUS PZ 4302 D	TOP PZ 4302 D
35119SE	1	PORTE PZ 4302 D	DOOR PZ 4302 D
35120SE	1	CONTRE PORTE PZ 4302 D	INNER DOOR PZ 4302 D
35123	1	FOND ARRIERE CUVE PZ 4302 D	TANK BACK REAR PZ 4302 D
35124	1	DEFLECTEUR GAUCHE PZ 4302 D	LEFT DEFLECTOR PZ 4302 D
35125	1	DEFLECTEUR DROIT PZ 4302 D	RIGHT DEFLECTOR PZ 4302 D
35127	4	BLOCAGE ISOLANT PZ 430 S/PZ 430 D/PZ 4302 D	INSULATION BLOCK PZ 430 S/PZ 430 D/PZ 4302 D
35128	4	SUPPORT TUBE QUARTZ PZ 430 S/PZ 430 D/PZ 4302 D	QUARTZ TUBE HOLDER PZ 430 S/PZ 430 D/PZ 4302 D
35130	1	CACHE BULBE THERMOSTAT PZ 430 S	THERMOSTAT BULB COVER PZ 430 S
A02029	1	MINUTERIE 15' PZ 330/PZ 660	TIMER 15' PZ 330/PZ 660
A04006	1	REGULATEUR GG, KG, CS, RST	REGULATOR GG, KG, CS, RST
A05008	1	CONTACTEUR RF14/RBE25/FC110 20A	THREE-POLE SWITCH RF14/RBE25/FC110 20A
A06035/1	1	THERMOSTAT SECURITE 16 A	SAFETY THERMOSTAT
A06042	1	THERMOSTAT PSE, FC 34, CREPIERE, PZ 330/660	THERMOSTAT PSE, FC 34, CREPE MACHINE PZ330/660
A08003	1	VOYANT ORANGE DIAM 12 UL	ORANGE PILOT LIGHT DIAM 12 UL
A08009	1	VOYANT VERT 230V UL	GREEN PILOT LIGHT 230V UL
A10032	2	PRESSE ETOUPE IP68 EPN 250/KV PG 16	CORD CLOSER IP68 EPN 250/KV PG 16
A13017	4	PIED	FOOT
A14078	3	BOUTON 12 H CREPIERE SHOARMA ELECT	KNOB 12 H FOR ELECTRIC CREPE MACHINE GRE
A15060	1	POIGNEE ALU PZ 4302 D	HANDLE PZ 4302 D
A16014	1	BORNIER 6 PLOTS CONTACT GRILL	6 HOLES DOMINO
A18022	1	SUPPORT LAMPE + LAMPE PHILIPS E 14 220 V	LAMP + LAMP HOLDER PHILIPS E 14 220 V
B04104	1	TUBE VAPEUR PZ	STEAM TUBE PZ
B08004	1	RIVET TERRE	EARTH RIVET
B09019	2	ENTRETOISE INOX PZ 430 S	STAINLESS STEEL SPACER PS 430 S
C03P04049	2	CORDON	CORD
C05018	1	BORNE EQUIPOTENTIEL	EQUIPOTENTIAL TERMINAL
D04038	2	RESIST.+ TUBE QUARTZ PZ 4302 D HAUT	TOP QUARTZ TUBE + ELEMENT PZ 4302D
D04039	6	RESIST.+ TUBE QUARTZ PZ 4302 D BAS	BOTTOM QUARTZ TUBE + ELEMENT PZ 4302D
F07024	1	CHAMOTTE 657x427x11+3 PZ 4302 D	FIRE STONE 657x427x11+3 PZ 4302 D
G06P04049	1	CADRAN	FRONT PANEL
H01075	2	VITRE PZ 430 2D	GLASS PZ 430 2D
H02058	1	ISOLANT MONTANT GAUCHE PZ 430 S/PZ 4302 D	LEFT SIDE INSULATION PZ 430 S/PZ 4302 D
H02059	1	ISOLANT MONTANT DROIT PZ 430 S/PZ 4302 D	RIGHT SIDE INSULATION PZ 430 S/PZ 4302 D
H02060	1	ISOLANT FOND DE CUVE PZ 4302 D	TANK BOTTOM INSULATION PZ 4302 D
H02061	1	ISOLANT REFLECTEUR PZ 4302 D	REFLECTOR INSULATION PZ 4302 D

## 2. CONTENTS OF CARDBOARD PACKAGING

Device: a pizza oven

Accessories: - a fire stone  
- the present note

See exploded views for PZ 430 S / PZ 430 D / PZ 4302D at the end of the document

## 3. CONFORMITY OF USE

Use the appliance only to cook fresh or frozen products like pizzas, quiches, lasagnes, pies, bread, pastries....

## 4. WAY OF FUNCTIONING

These pizza ovens are made for the fast cooking of fresh or deep frozen products.

Cooking is made thanks to 8 quartz tube heating elements (PZ 430 S/PZ 430 2D) or 16 quartz tube heating elements (PZ 430 D) which produce a maximum infrared radiation. A fire stone ensures an excellent spread of heat for an homogeneous cooking of the dough.

To turn on the oven, select the heating time by turning the timer control knob (n°1 on picture), the green pilot light (n°2 on picture) ignites. You can put the timer on the continuous position by turning the timer control knob on the left. In this case, do not forget to turn off the oven at the end of the service.

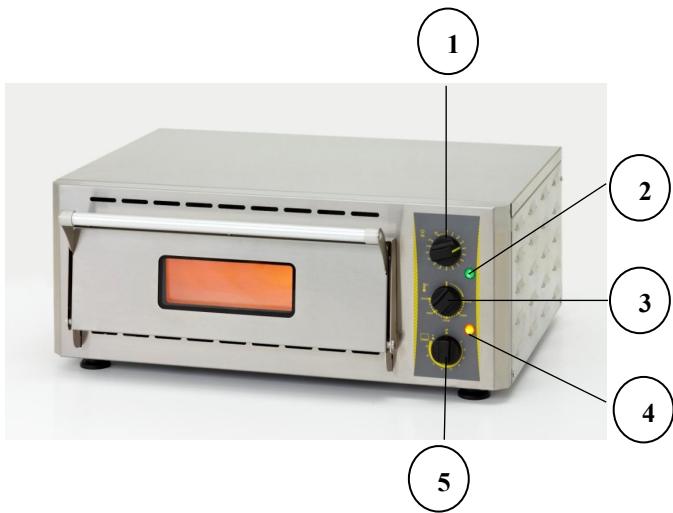
Turn on the thermostat control knob (n°3 on picture) on the wished position, the orange pilot light (n°4 on picture) ignites. The upper quartz tubes are running. Turn on the regulation knob (n°5 on picture) on the wished power. The lower quartz tubes ignite.

You can reach full power by turning the knob on C position.

# PZ 430 2D (2 cordons)

Nomenclature

DT25_2	Date : 04/09/2014	Dessiné par : C.Gu	Approuvé par : J.Godéré	Date : 04/09/2014	Indice A
--------	----------------------	-----------------------	----------------------------	----------------------	-------------



- 1 15 mn timer
- 2 On/off pilot light
- 3 Thermostat
- 4 Thermostatic pilot light
- 5 Regulator

## 5. FUNCTIONING / MANIPULATION

### a) Installation / assembly :

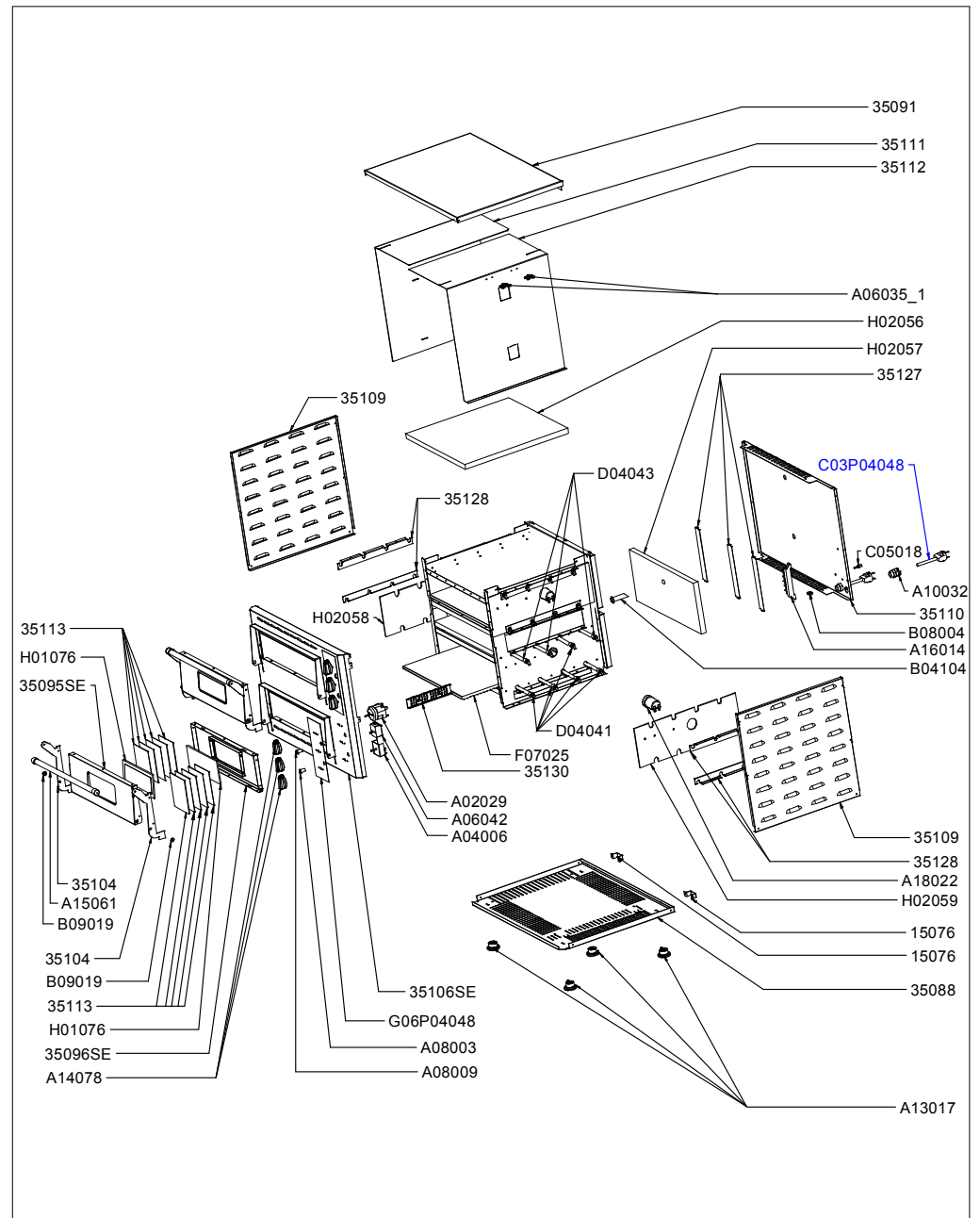
- Unpack carefully the device of its packaging.
- Place it on a plane and heatproof surface.
- Never place the device near a wall or near a partition makes of combustibile materials even if it is very well isolated.
- A distance of minimum 10 cm with the partition or the wall is necessary.
- Remove the protective film around the device and unpack the fire stone

### b) First starting :

During the first use, warm your machine up outside to evacuate residual smokes of manufacturing oil from the metallic parts. This may emit a slight smell for a few moments.

### First cleaning

Clean the device before the first use. (See 6. Cleaning)



<h1>PZ 430 D (2 cordons)</h1>				Vue éclatée	
DT24_2	Date : 03/09/2014	Dessiné par : C.Gu	Approuvé par : S.Grenon	Date : 03/09/2014	Indice A

CODE	QTE	PIECE	SPARE PART
15076	2	BUTEE ARRIERE	BACK TOP
35088	1	SOCLE PZ 430 S/PZ 430 D	BASE PZ 430 S/PZ 430 D
35091	1	DESSUS PZ 430 S/PZ 430 D	TOP PZ 430 S/PZ 430 D
35095SE	2	PORTE PZ 430 S/PZ 430 D	DOOR PZ 430 S/PZ 430 D
35096SE	2	CONTRE PORTE PZ 430 S/PZ 430 D	INNER DOOR PZ 430 S/PZ 430 D
35104	4	COMPAS DE PORTE G/D PZ 430 S-PZ 430 D-PZ 4302 D	LEFT/RIGHT DOOR COMPASS PZ 430 S-PZ 430 D-PZ 4302 D
35106SE	1	PLATINE AVANT PZ 430 D	CONTROL PANEL PZ 430 D
35109	2	FLASQUE A OUIE PZ 430 D	SIDE CASING PZ 430 D
35110	1	FOND ARRIERE CUVE PZ 430 D	TANK BACK REAR PZ 430 D
35111	1	DEFLECTEUR GAUCHE PZ 430 D	LEFT DEFLECTOR PZ 430 D
35112	1	DEFLECTEUR DROIT PZ 430 D	RIGHT DEFLECTOR PZ 430 D
35113	20	CONTRE POIDS PZ 430 S/PZ 430 D/PZ 4302 D	AGAINST WEIGHT PZ 430 S/PZ 430 D/PZ 4302 D
35127	6	BLOCAGE ISOLANT PZ 430 S/PZ 430 D/PZ 4302 D	INSULATION BLOCK PZ 430 S/PZ 430 D/PZ 4302 D
35128	8	SUPPORT TUBE QUARTZ PZ 430 S/PZ 430 D/PZ 4302 D	QUARTZ TUBE HOLDER PZ 430 S/PZ 430 D/PZ 4302 D
35130	2	CACHE BULBE THERMOSTAT PZ 430 S	THERMOSTAT BULB COVER PZ 430 S
A02029	2	MINUTERIE 15' PZ 330/PZ 660	TIMER 15' PZ 330/PZ 660
A04006	2	REGULATEUR GG, KG, CS, RST	REGULATOR GG, KG, CS, RST
A06035/1	2	THERMOSTAT SECURITE 16 A	SAFETY THERMOSTAT
A06042	2	THERMOSTAT PSE, FC 34, CREPIERE, PZ 330/660	THERMOSTAT PSE, FC 34, CREPE MACHINE PZ330/660
A08003	2	VOYANT ORANGE DIAM 12 UL	ORANGE PILOT LIGHT DIAM 12 UL
A08009	2	VOYANT VERT 230V UL	GREEN PILOT LIGHT 230V UL
A10032	1	PRESSE ETOUPE IP68 EPN 250/KV PG 16	CORD CLOSER IP68 EPN 250/KV PG 16
A12014	1	BOUCHON SR 1765 RF16	HOLDUP SR 1765 RF16
A13017	4	PIED	FOOT
A14078	6	BOUTON 12 H CREPIERE SHOARMA ELECT	KNOB 12 H FOR ELECTRIC CREPE MACHINE GRE
A15061	2	POIGNEE ALU PZ 430 S/PZ 430 D	HANDLE PZ 430 S/PZ 430 D
A16014	1	BORNIER 6 PLOTS CONTACT GRILL	6 HOLES DOMINO
A18022	2	SUPPORT LAMPE + LAMPE PHILIPS E 14 220 V	LAMP + LAMP HOLDER PHILIPS E 14 220 V
B04104	2	TUBE VAPEUR PZ	STEAM TUBE PZ
B08004	1	RIVET TERRE	EARTH RIVET
B09019	4	ENTRETOISE INOX PZ 430 S	STAINLESS STEEL SPACER PS 430 S
C03P04048	2	CORDON	CORD
C05018	1	BORNE EQUIPOTENTIEL	EQUIPOTENTIAL TERMINAL
D04041	10	TUBE QUARTZ PZ 430 S/D	QUARTZ TUBE PZ 430 S/D
D04043	6	TUBE QUARTZ PZ 430 S/D	QUARTZ TUBE PZ 430 S/D
F07025	2	CHAMOTTE 427X427X10+3 PZ 430S/430 D/4302 D	FIRE STONE 427X427X10+3 PZ 430S/430 D/4302 D
G06P04048	2	CADRAN	FRONT PANEL
H01076	4	VITRE PZ 430 S/PZ 430 D	GLASS PZ 430 S/PZ 430 D
H02056	2	ISOLANT REFLECTEUR PZ 430 S/PZ 430 D	REFLECTOR INSULATION PZ 430 S/PZ 430 D
H02057	2	ISOLANT FOND DE CUVE PZ 430 S/PZ 430 D	TANK BOTTOM INSULATION PZ 430 S/PZ 430 D
H02058	2	ISOLANT MONTANT GAUCHE PZ 430 S/PZ 4302 D	LEFT SIDE INSULATION PZ 430 S/PZ 4302 D
H02059	2	ISOLANT MONTANT DROIT PZ 430 S/PZ 4302 D	RIGHT SIDE INSULATION PZ 430 S/PZ 4302 D

## Connection of the device

- Check that the tension and the frequency of the electricity network suit to the values indicated on the descriptive plate.
- Check that neither the cord nor the plug are damaged. If necessary, it has to be replaced by the manufacturer, its after sale service or any qualified person to avoid any risk.
- Make sure that every control knob is positioned on 0.
- Unwind completely the electric power cable and connect it in a plug connected with the earth.
- The device is connected.

NB: in case of connection of the device in a plug without earth protection or directly on the electricity network, confide its connection to a qualified person .

## c) Use of device :

### Elements of command and display

Command/Display	Function
Regulator (n°5 on picture)	Temperature setting of the bottom heating element
Thermostat (n°3 on picture)	Temperature setting inside the cooking chamber
15 min timer (n°1 on picture)	On/off + Cooking time
Green pilot light (n°2 on picture)	Machine on (pilot light on) Machine off (pilot light off)
Orange pilot light (n°4 on picture)	Warming up (pilot light on) Desired temperature reached (pilot light off)

### Putting on

Turn on the timer control knob (n°1 on picture) on wished cooking time. The green pilot light (n°2 on picture) ignites  
Turn on the thermostat control knob (n°3 on picture) on the wished position: the orange pilot light (n°4 on picture) ignites. The machine is warming up.  
Once orange pilot light (n°4 on picture) is off, the machine reached the wished temperature and is ready for cooking.

### A few tips

To obtain much better results, we advise to regulate the oven as follows :

- A fresh pizza (diam.40cm) with a thin dough will be ready in 3 min, thermostat 350 ° C, regulator on position 9.

## PZ 430 D (2 cordons)

Nomenclature

DT24_2	Date : 03/09/2014	Dessiné par : C.Gu	Approuvé par : J.Godéré	Date : 03/09/2014	Indice A
--------	----------------------	-----------------------	----------------------------	----------------------	-------------

- A deep-frozen pizza (diam. 40cm) with a thick dough will be ready in 4 min, thermostat 320°C, regulator on position 7

You can use your pizza oven in continuous by turning the timer on left side from position 0. Caution : do not forget to turn off your pizza oven after use.

### Temperature setting

Set the temperature by positioning the thermostat (n°3 on picture) to the desired temperature. The orange pilot light (n°4 on picture) switches on if a higher level of temperature is required and switches off when the same is reached.

The energy regulator enables you to adapt the heating power of the bottom heating element regarding the thickness of the dough to be cooked. The thicker is the dough, the higher the temperature has to be. The cooking of the pizza dough is essentially made through the bottom.

### Stopping the appliance

Set the thermostat control knob (n°3 on picture) on 0  
 Set the timer (n°1 on picture) on 0 : the appliance is no longer functioning.  
 Disconnect the power cable.  
 Clean the appliance. (see 6. Cleaning)

### d) Breakdown / repair:

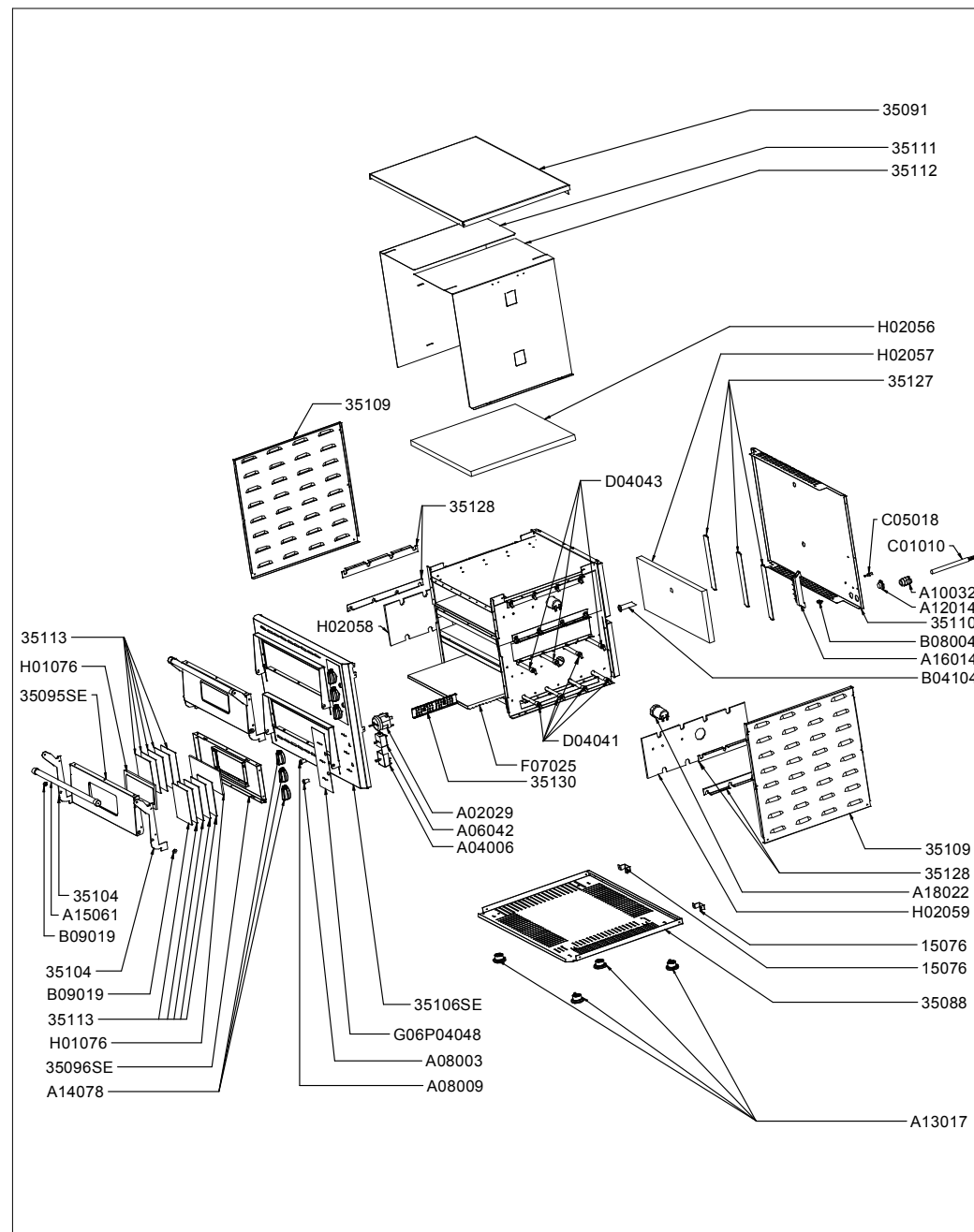
In case of breakdown or of damaged part, please call your after-sales service and confide any technical operation to qualified person.

When you contact the after-sales service of your distributor or your store, give him the complete reference of your device (commercial name, type and serial number). This information appears on the visible descriptive plate behind the device.

## 6. CLEANING AND MAINTENANCE

Disconnect the device.

- Let cool completely the device before any technical intervention or cleaning.
- Clean the fire stone when it is warm by scratching it slightly with a wire brush or a small emery cloth to remove residues.
- Never clean the fire stone under water- Never clean the quartz tubes when they are hot
- Avoid touching quartz tubes with your fingers but use a cloth moistened with spirit.
- Clean regularly the external walls of your device with warm water and wash liquid: avoid the abrasive towelling. Rinse your device with a wet sponge.



<b>PZ 430 D (1 cordon)</b>				Vue éclatée	
DT24_1	Date : 03/09/2014	Dessiné par : C.Gu	Approuvé par : S.Grenon	Date : 03/09/2014	Indice A

CODE	QTE	PIECE	SPARE PART
15076	2	BUTEE ARRIERE	BACK TOP
35088	1	SOCLE PZ 430 S/PZ 430 D	BASE PZ 430 S/PZ 430 D
35091	1	DESSUS PZ 430 S/PZ 430 D	TOP PZ 430 S/PZ 430 D
35095SE	2	PORTE PZ 430 S/PZ 430 D	DOOR PZ 430 S/PZ 430 D
35096SE	2	CONTRE PORTE PZ 430 S/PZ 430 D	INNER DOOR PZ 430 S/PZ 430 D
35104	4	COMPAS DE PORTE G/D PZ 430 S-PZ 430 D-PZ 4302 D	LEFT/RIGHT DOOR COMPASS PZ 430 S-PZ 430 D-PZ 4302 D
35106SE	1	PLATINE AVANT PZ 430 D	CONTROL PANEL PZ 430 D
35109	2	FLASQUE A OUIE PZ 430 D	SIDE CASING PZ 430 D
35110	1	FOND ARRIERE CUVE PZ 430 D	TANK BACK REAR PZ 430 D
35111	1	DEFLECTEUR GAUCHE PZ 430 D	LEFT DEFLECTOR PZ 430 D
35112	1	DEFLECTEUR DROIT PZ 430 D	RIGHT DEFLECTOR PZ 430 D
35113	20	CONTRE POIDS PZ 430 S/PZ 430 D/PZ 4302 D	AGAINST WEIGHT PZ 430 S/PZ 430 D/PZ 4302 D
35127	6	BLOCAGE ISOLANT PZ 430 S/PZ 430 D/PZ 4302 D	INSULATION BLOCK PZ 430 S/PZ 430 D/PZ 4302 D
35128	8	SUPPORT TUBE QUARTZ PZ 430 S/PZ 430 D/PZ 4302 D	QUARTZ TUBE HOLDER PZ 430 S/PZ 430 D/PZ 4302 D
35130	2	CACHE BULBE THERMOSTAT PZ 430 S	THERMOSTAT BULB COVER PZ 430 S
A02029	2	MINUTERIE 15' PZ 330/PZ 660	TIMER 15' PZ 330/PZ 660
A04006	2	REGULATEUR GG, KG, CS, RST	REGULATOR GG, KG, CS, RST
A06035/1	2	THERMOSTAT SECURITE 16 A	SAFETY THERMOSTAT
A06042	2	THERMOSTAT PSE, FC 34, CREPIERE, PZ 330/660	THERMOSTAT PSE, FC 34, CREPE MACHINE PZ330/660
A08003	2	VOYANT ORANGE DIAM 12 UL	ORANGE PILOT LIGHT DIAM 12 UL
A08009	2	VOYANT VERT 230V UL	GREEN PILOT LIGHT 230V UL
A10032	1	PRESSE ETOUPE IP68 EPN 250/KV PG 16	CORD CLOSER IP68 EPN 250/KV PG 16
A12014	1	BOUCHON SR 1765 RF16	HOLDUP SR 1765 RF16
A13017	4	PIED	FOOT
A14078	6	BOUTON 12 H CREPIERE SHOARMA ELECT	KNOB 12 H FOR ELECTRIC CREPE MACHINE GRE
A15061	2	POIGNEE ALU PZ 430 S/PZ 430 D	HANDLE PZ 430 S/PZ 430 D
A16014	1	BORNIER 6 PLOTS CONTACT GRILL	6 HOLES DOMINO
A18022	2	SUPPORT LAMPE + LAMPE PHILIPS E 14 220 V	LAMP + LAMP HOLDER PHILIPS E 14 220 V
B04104	2	TUBE VAPEUR PZ	STEAM TUBE PZ
B08004	1	RIVET TERRE	EARTH RIVET
B09019	4	ENTRETOISE INOX PZ 430 S	STAINLESS STEEL SPACER PS 430 S
C03P04048	2	CORDON	CORD
C05018	1	BORNE EQUIPOTENTIEL	EQUIPOTENTIAL TERMINAL
D04041	10	TUBE QUARTZ PZ 430 S/D	QUARTZ TUBE PZ 430 S/D
D04043	6	TUBE QUARTZ PZ 430 S/D	QUARTZ TUBE PZ 430 S/D
F07025	2	CHAMOTTE 427X427X10+3 PZ 430S/430 D/4302 D	FIRE STONE 427X427X10+3 PZ 430S/430 D/4302D
G06P04048	2	CADRAN	FRONT PANEL
H01076	4	VITRE PZ 430 S/PZ 430 D	GLASS PZ 430 S/PZ 430 D
H02056	2	ISOLANT REFLECTEUR PZ 430 S/PZ 430 D	REFLECTOR INSULATION PZ 430 S/PZ 430 D
H02057	2	ISOLANT FOND DE CUVE PZ 430 S/PZ 430 D	TANK BOTTOM INSULATION PZ 430 S/PZ 430 D
H02058	2	ISOLANT MONTANT GAUCHE PZ 430 S/PZ 4302 D	LEFT SIDE INSULATION PZ 430 S/PZ 4302 D
H02059	2	ISOLANT MONTANT DROIT PZ 430 S/PZ 4302 D	RIGHT SIDE INSULATION PZ 430 S/PZ 4302 D

- Never clean the device under a water jet, the infiltrations would risk to damage it in a irreparable way.
- Never immerse the device, the cord or the plug in the water or quite other liquid to avoid any electric shock.
- During a prolonged non-use, we recommend you strongly to keep the device shielded from the humidity.

## 7. CARACTERISTIQUES TECHNIQUES

Model	PZ 430 S	PZ 430 D	PZ 430 2D
Outside dimensions	670x580x270 mm	670x580x500 mm	895x580x270 mm
Inside dimensions	430X430 mm	2x (430x430)	660x430
Weight	31 Kg	54 Kg	41Kg
Power	3000 W	6000 W	5000 W
No element	8	16	8
Current	13 A	13 A/Phase	11 A/Phase
Voltage	220-240 V ~	380-415 V 3 N~ ou 2x 220-240 V ~	2x 220-240 V ~

Wires colours correspondance

Phase 1	Brown
Phase 2	Black
Phase 3	Grey
Neutral	Blue
Earth	Yellow-Green



The equipotential connection marked by this symbol must be linked with the equipotential conductive connection of your installation by means of a minimum conduction of a 2.5 mm<sup>2</sup> section.

## 8. NORMS AND LEGALS DISPOSALS

The device is conform to :

IEC/EN 60335-1  
IEC/EN 60335-2-36  
EN 55014-1 + 55014-2  
EN 61000-3-2 + 61000-3-3

Humidity protection degrees IPX3, in conformity with the norm 60335-2-36 (2008)

<h1>PZ 430 D (1 cordon)</h1>		Nomenclature	
DT24_1	Date : 03/09/2014	Dessiné par : C.Gu	Approuvé par : J.Godéré
		Date : 03/09/2014	Indice A



## 9. ELIMINATION OF THE ELECTRIC AND ELECTRONIC WASTE

The device respects the directives:

2002/96/CE (DEEE) N°34270064800021  
 2002/95/CE (ROHS)  
 2006/95 CE  
 2004/108 CE



### Reach rule

Never put the device among household waste.  
 The device must be put down in a centre of recycling for the electric equipments.

The materials of the device are indeed reusable. By eliminating correctly the electric and electronic wastes, the recycling and quite other shape of re-use of worn equipments, you participate in a significant way in the environmental protection.

For any information about the collection of electric and electronic waste, please contact your distributor.

Pour toute information sur la collecte des déchets électriques et électroniques, veuillez contacter votre distributeur.

## 10. GUARANTEE

### Conditions of guarantee

The guarantee applicable to any device is the commercial guarantee of the distributor or the retailer. Please contact the store where you bought your device to know the precise conditions.

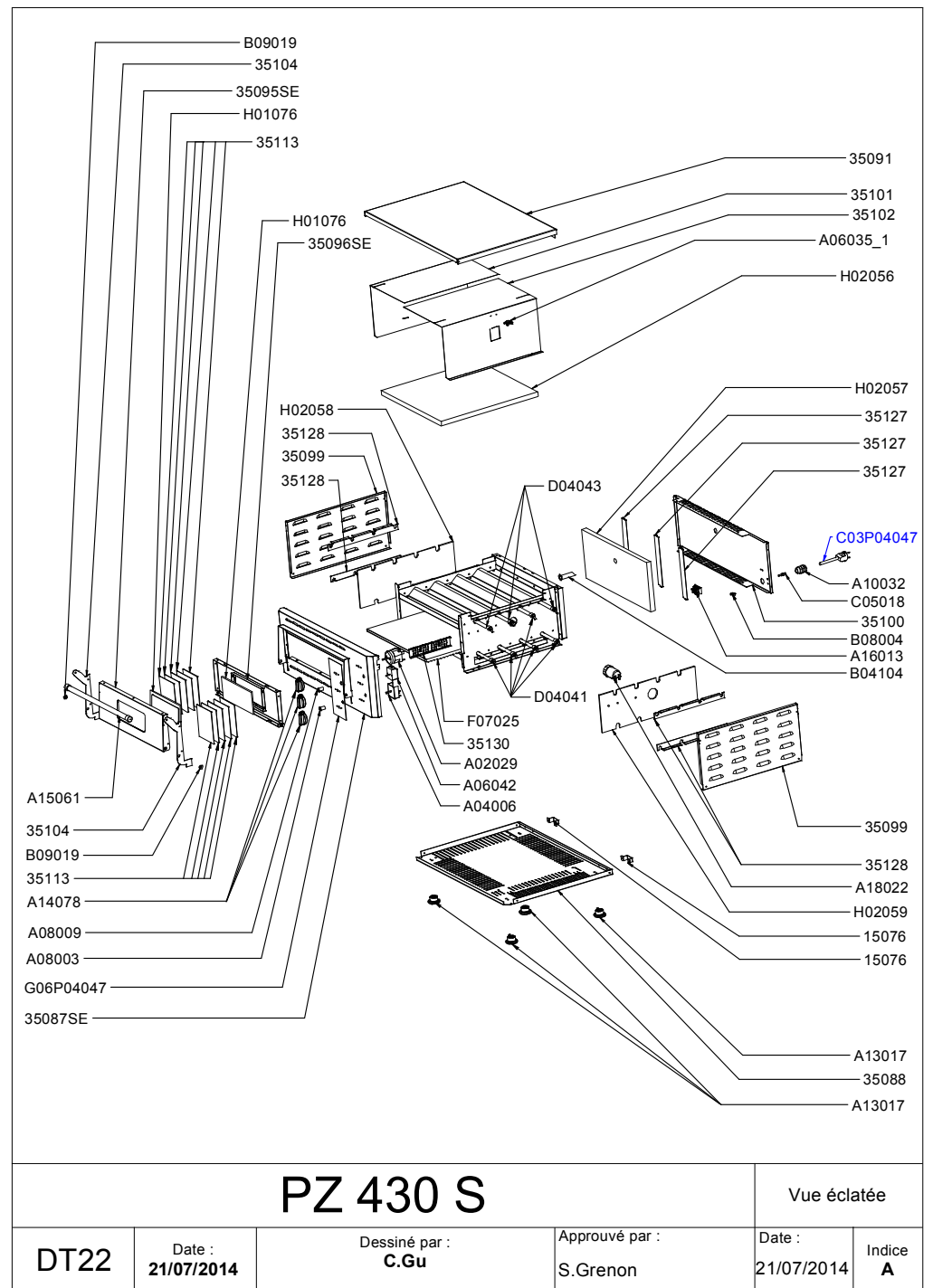
The guarantee grants no right for damages.

The dispositions which follow are not exclusive of the profit of the legal guarantee planned by articles 1641 and following ones of the Civil code relative to the defects and the latent defects.

### Exclusion clauses of the guarantee

**Bad installation and bad maintenance, in particular if they do not respect current regulations or instructions appearing in this user guide.**

Cannot benefit from the guarantee the repairs required as a result of false operations, of inappropriate use, of carelessness or of excess loads of the device, as well as those resulting from variations of the power supply, over tension or from defective installations.



**PZ 430 S**

Vue éclatée

DT22

Date :  
21/07/2014

Dessiné par :  
C.Gu

Approuvé par :  
S.Grenon

Date :  
21/07/2014

Indice  
A



The damage due to shocks, bad weather is not flatware by the guarantee. The material travels at the risks of the user; in case of delivery by carrier, the consignee has to have reservations towards the carrier before any delivery of the device.

The guarantee comes to an end in case of intervention, of repair, of modification by no qualified persons, or of use in inappropriate purposes.

CODE	QTE	PIECE	SPARE PART
15076	2	BUTEE ARRIERE	BACK TOP
35087SE	1	PLATINE AVANT PZ 430 S	CONTROL PANEL PZ 430 S
35088	1	SOCLE PZ 430 S/PZ 430 D	BASE PZ 430 S/PZ 430 D
35091	1	DESSUS PZ 430 S/PZ 430 D	TOP PZ 430 S/PZ 430 D
35095SE	1	PORTE PZ 430 S/PZ 430 D	DOOR PZ 430 S/PZ 430 D
35096SE	1	CONTRE PORTE PZ 430 S/PZ 430 D	INNER DOOR PZ 430 S/PZ 430 D
35099	2	FLASQUE A OUIE PZ 430 S/PZ 4302 D	SIDE CASING PZ 430 S/PZ 4302 D
35100	1	FOND ARRIERE CUVE PZ 430 S	TANK BACK REAR PZ 430 S
35101	1	DEFLECTEUR GAUCHE PZ 430 S	LEFT DEFLECTOR PZ 430 S
35102	1	DEFLECTEUR DROIT PZ 430 S	RIGHT DEFLECTOR PZ 430 S
35104	2	MPAS DE PORTE GAUCHE/DROIT PZ 430 S-PZ 430 D-PZ 430	LEFT/RIGHT DOOR COMPASS PZ 430 S-PZ 430 D-PZ 4302 D
35113	10	C.ONTRE POIDS PZ 430 S/PZ 430 D/PZ 4302 D	AGAINST WEIGHT PZ 430 S/PZ 430 D/PZ 4302 D
35127	3	BLOCAGE ISOLANT PZ 430 S/PZ 430 D/PZ 4302 D	INSULATION BLOCK PZ 430 S/PZ 430 D/PZ 4302 D
35128	4	SUPPORT TUBE QUARTZ PZ 430 S/PZ 430 D/PZ 4302 D	QUARTZ TUBE HOLDER PZ 430 S/PZ 430 D/PZ 4302 D
35130	1	CACHE BULBE THERMOSTAT PZ 430 S	THERMOSTAT BULB COVER PZ 430 S
A02029	1	MINUTERIE 15' PZ 330/PZ 660	TIMER 15' PZ 330/PZ 660
A04006	1	REGULATEUR GG, KG, CS, RST	REGULATOR GG, KG, CS, RST
A06035/1	1	THERMOSTAT SECURITE 16 A	SAFETY THERMOSTAT
A06042	1	THERMOSTAT PSE, FC 34, CREPIERE, PZ 330/660	THERMOSTAT PSE, FC 34, CREPE MACHINE PZ330/660
A08003	1	VOYANT ORANGE DIAM 12 UL	ORANGE PILOT LIGHT DIAM 12 UL
A08009	1	VOYANT VERT 230V UL	GREEN PILOT LIGHT 230V UL
A10032	1	PRESSE ETOUPE IP68 EPN 250/KV PG 16 RF14	CORD CLOSER IP68 EPN 250/KV PG 16 RF14
A13017	4	PIED (PL 400/600 E-G)	FOOT (PL 400/600 E-G)
A14078	3	BOUTON 12 H CREPIERE SHOARMA ELECT	KNOB 12 H FOR ELECTRIC CREPE MACHINE GRE
A15061	1	POIGNEE ALU PZ 430 S/PZ 430 D	HANDLE PZ 430 S/PZ 430 D
A16013	1	BORNIER 3 PLOTS CONTACT GRILL	3 HOLES DOMINO
A18022	1	SUPPORT LAMPE + LAMPE PHILIPS E 14 220 V	LAMP + LAMP HOLDER PHILIPS E 14 220 V
B04104	1	TUBE VAPEUR PZ	STREAM TUBE PZ
B08004	1	RIVET TERRE	EARTH RIVET
B09019	2	ENTRETOISE INOX PZ 430 S	STAINLESS STEEL SPACER PS 430 S
C03P04047	1	CORDON	CORD
C05018	1	BORNE EQUIPOTENTIEL	EQUIPOTENTIAL TERMINAL
D04041	5	RESISTANCE + TUBE QUARTZ BAS ET HAUT ARRIERE	REAR TOP QUARTZ TUBE + HEATING ELEMENT
D04043	3	RESISTANCE + TUBE QUARTZ PZ 430/430 D HAUT 580 W	TOP QUARTZ TUBE+HEATING ELEMENT PZ 430/430 D 580 W
F07025	1	CHAMOTTE 427X427X10+3 PZ 430S/430 D/4302 D	FIRE STONE 427X427X10+3 PZ 430S/430 D/4302D
G06P04047	1	CADRAN	FRONT PANEL
H01076	2	VITRE PZ 430 S/PZ 430 D	GLASS PZ 430 S/PZ 430 D
H02056	1	ISOLANT REFLECTEUR PZ 430 S/PZ 430 D	REFLECTOR INSULATION PZ 430 S/PZ 430 D
H02057	1	ISOLANT FOND DE CUVE PZ 430 S/PZ 430 D	TANK BOTTOM INSULATION PZ 430 S/PZ 430 D
H02058	1	ISOLANT MONTANT GAUCHE PZ 430 S/PZ 4302 D	LEFT SIDE INSULATION PZ 430 S/PZ 4302 D
H02059	1	ISOLANT MONTANT DROIT PZ 430 S/PZ 4302 D	RIGHT SIDE INSULATION PZ 430 S/PZ 4302 D

# PZ 430 S

Nomenclature

DT22

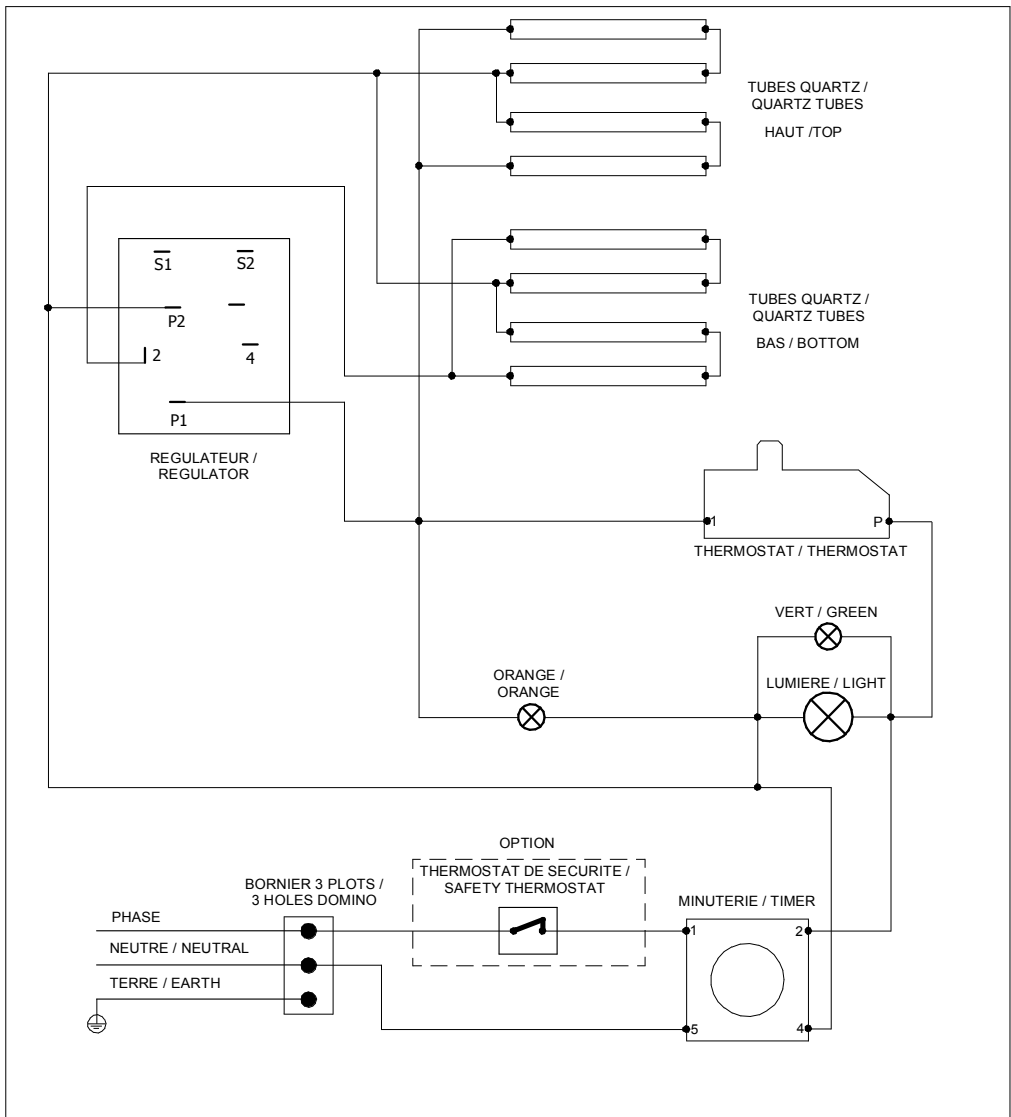
Date :  
21/07/2014

Dessiné par :  
C.Gu

Approuvé par :  
J.Godéré

Date :  
21/07/2014

Indice  
A

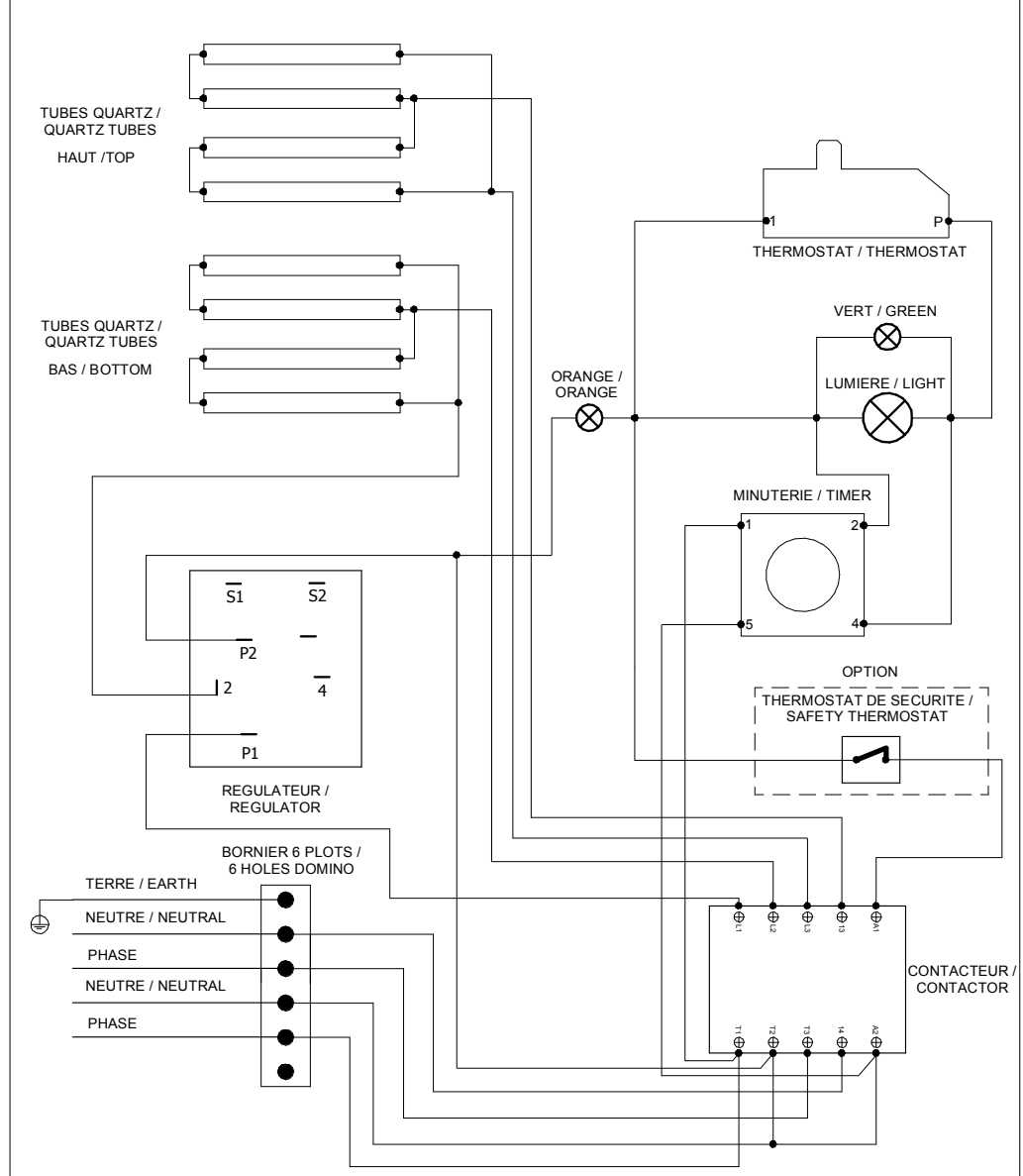


Câblage : C02383  
Option : C02223

**PZ 430 S**

Schéma électrique

DT22	Date : 21/07/2014	Dessiné par : C.Gu	Approuvé par : S.Grenon	Date : 21/07/2014	Indice A
------	-------------------	--------------------	-------------------------	-------------------	----------

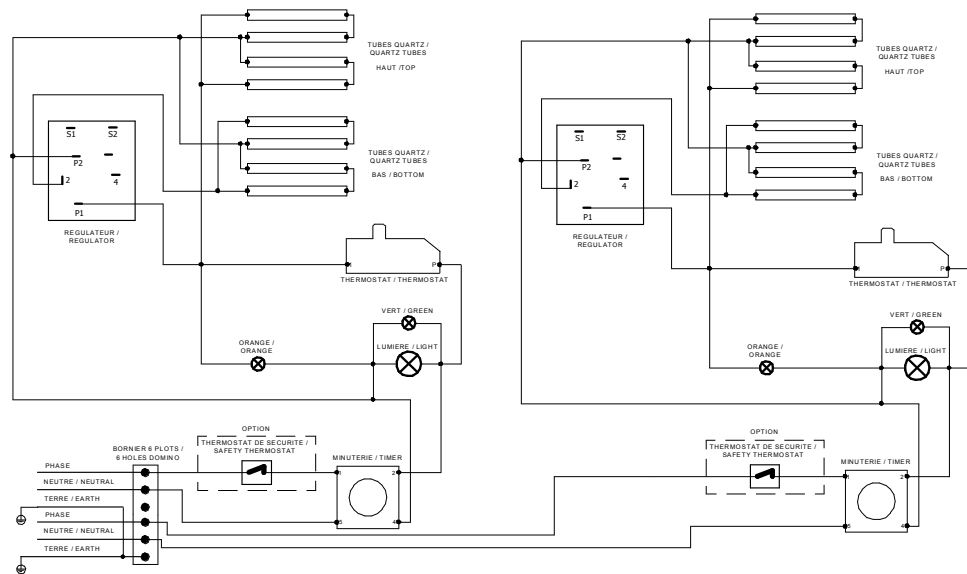


Câblage : C02385

**PZ 430 2D (2 cordons)**

Schéma électrique

DT25_2	Date : 04/09/2014	Dessiné par : C.Gu	Approuvé par : S.Grenon	Date : 04/09/2014	Indice A
--------	-------------------	--------------------	-------------------------	-------------------	----------



Câblage : C02383

PZ 430 D (2 cordons)

Schéma électrique

DT24\_2

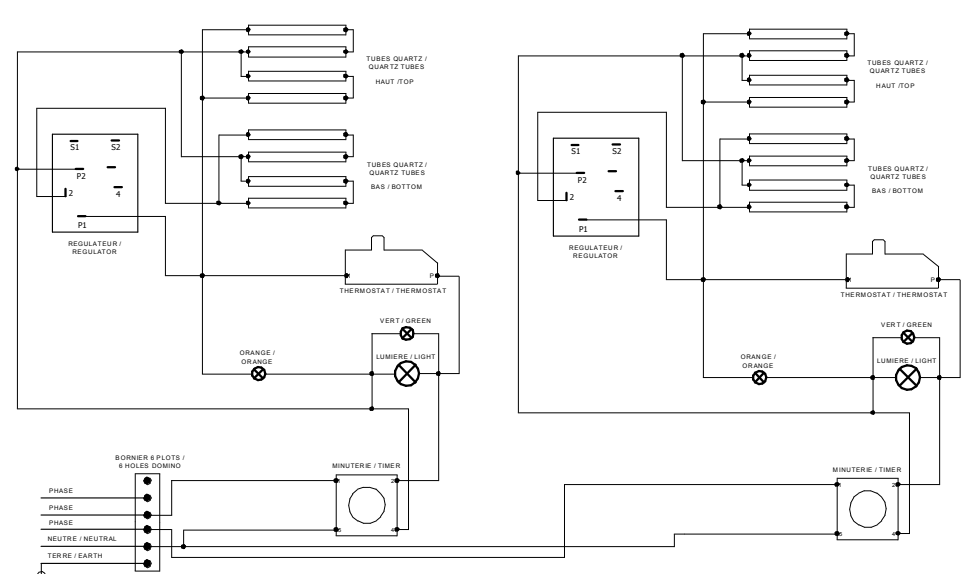
Date : 03/09/2014

Dessiné par : C.Gu

Approuvé par : S.Grenon

Date : 03/09/2014

Indice A



Câblage : C02383

PZ 430 D (1 cordon)

Schéma électrique

DT24\_1

Date : 03/09/2014

Dessiné par : C.Gu

Approuvé par : S.Grenon

Date : 03/09/2014

Indice A