



HOSHIZAKI

IM-45CNE CUBE ICE MAKER

Product Description

The IM-45CNE is a self contained under counter cube ice maker. It is suited for placement under bars and food servicing countertops. This model maintains low levels of water- and energy consumption.



- A closed water circuit offers the ultimate contamination protection, by reducing the number of points at which impurities can enter the ice making process.
- Hoshizaki ice makers are micro computer controlled, controlling the ice making process to perform at its best under varying circumstances, without having to make physical adjustments.
- A stainless steel exterior with integrated door handles provides a hygienic and high quality finish.
- Foam injected polyurethane for insulation (HFC free), helps preserve the quality and consistency of the ice produced, reducing the number of production cycles.
- An easily cleanable air filter allows end users to carry out a routine cleaning schedule, extending product life expectancy and reducing the frequency and costs of maintenance call-outs.
- Removable door gaskets help prevent any heat and contamination from entering the bin as well as making your Hoshizaki product easy to clean and maintain.

Available Models

IM-45CNE (Air Cooled)
IM-45CNE-25 (Air Cooled)

Ice Cubes

Model	Size	Shape
IM-45CNE	Large (Standard) 28 x 28 x 32 mm	
IM-45CNE-25	Medium (25) 25 x 25 x 23 mm	

Bins

Model	Type of Bin	Bin Capacity
IM-45CNE (-25)	Self contained	18kg

Production

Model	Ice Production per 24h (Dimple Size)	Temperature	Ice Production per Cycle	Water Consumption per 24h
IM-45CNE	Approx. 44kg (15mm) / 36kg (5mm) Approx. 40kg (15mm) / 32kg (5mm) Approx. 32kg (15mm) / 29kg (5mm)	AT.10°C, WT.10°C AT.21°C, WT.15°C AT.32°C, WT.21°C	Approx. 0,67kg / 30 pcs	Approx. 0,17m ³ Approx. 0,10m ³ Approx. 0,09m ³

Two Year Warranty

For more information visit our website at www.hoshizaki-europe.com
Hoshizaki Europe B.V. retains the right to change products and their specifications without prior notice.

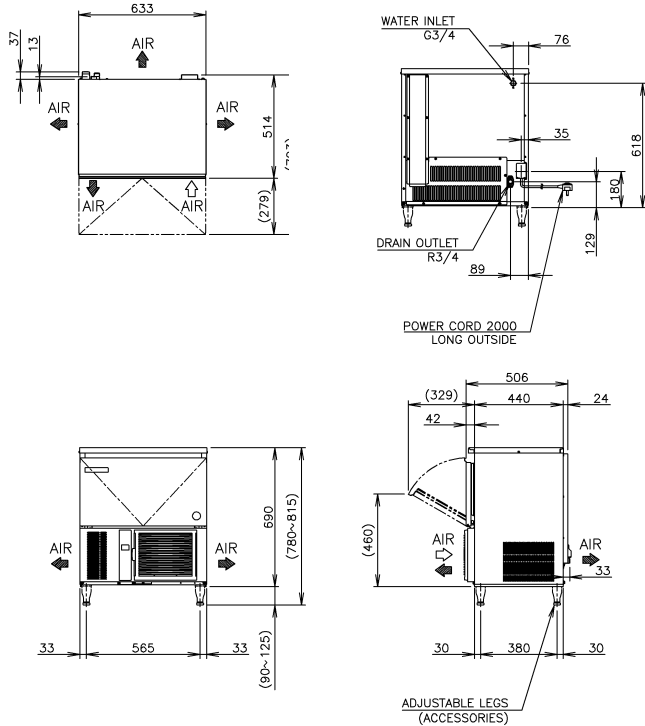




HOSHIZAKI

IM-45CNE CUBE ICE MAKER

IM-45CNE



D09533 / 2011.08.24

Specification	IM-45CNE (Air Cooled)
AC Supply Voltage	1 PHASE 220-240V 50Hz
Amperage (AT.32°C, WT.21°C)	2.4A
Electric Consumption (AT.32°C, WT.21°C)	320W
Exterior	Stainless Steel, Galvanized Steel (Rear)
Insulation	Polyurethane Foam
Insulation Foam Blowing Agent	Water Blown
Connections-Electric	X-Type Con. (with CONT. Plug or UK Plug)
Connections-Water Supply	Inlet 3/4" (connected at rear side)
Connections-Drain	Outlet 3/4" (connected at rear side)
Ice Making System	Closed Cell Type
Condenser	Air-cooled, Fin and Tube type
Heat Rejection (AT.32°C, WT.21°C)	640W
Refrigerant Control	Capillary Tube
Refrigerant Charge	R134a
Ice Making Control System	Thermistor, Timer
Bin Control System	Microswitch with Time Delay Board
Electrical Protection	Class I Appliance, 5A Fuse
Compressor Protection	Auto- reset Overload Protector
Ice Maker Protection	Interlock by Controller Board
Dimensions Product excl. Packaging	633 x 506 x 690 (W x D x H, mm)
Dimensions Product incl. Packaging	740 x 620 x 890 (W x D x H, mm)
Weight Gross / Net	55 kg / 48 kg

Operation Requirements	
Ambient Temperature	1 - 40°C
Water Supply Temperature	5 - 35°C
Water Supply Pressure	0,7-7,8 bar (0,07-0,78MPa)
Voltage Range	Rated Voltage ± 6%

Accessories
Scoop
Leg
Installation Kit

For more information please contact your local sales office:

Hoshizaki Belgium:
Hoshizaki Deutschland:
Hoshizaki France:
Hoshizaki Iberia:
Hoshizaki Middle East:

info@hoshizaki.be
info@hoshizaki.de
info@hoshizaki.fr
info@hoshizaki.es
sales@hoshizaki.ae

Hoshizaki Nederland:
Hoshizaki United Kingdom:
Other countries:

sales@hoshizaki.nl
uksales@hoshizaki.co.uk
sales@hoshizaki.nl

www.hoshizaki-europe.com