



# HENDI

Tools for Chefs

## BLENDER WITH NOISE COVER

HND298060



You should read this user manual carefully before using the appliance.



Keep these instructions with the appliance.




For indoor use only.



Dear Customer,

Thank you for purchasing this Hendi appliance. Before using the appliance for the first time, please read this manual carefully, paying particular attention to the safety regulations outlined below.

## Safety regulations

- This appliance is intended for commercial use.
- The appliance must only be used for the purpose for which it was intended and designed. The manufacturer is not liable for any damage caused by incorrect operation and improper use.
- Keep the appliance and electrical plug away from water and any other liquids. In the event that the appliance should fall into water, immediately remove plug from the socket and do not use until the appliance has been checked by a certified technician. Failure to follow these instructions could cause a risk to lives.
- Never attempt to open the casing of the appliance yourself.
- Do not insert any objects in the casing of the appliance.
- Do not touch the plug with wet or damp hands.
-  **DANGER OF ELECTRIC SHOCK!** Do not attempt to repair the appliance yourself. In case of malfunctions, repairs are to be conducted by qualified personnel only.
- **Never use a damaged appliance!** Disconnect the appliance from the electrical outlet and contact the retailer if it is damaged.
- **WARNING!** Do not immerse the electrical parts of the appliance in water or other liquids. Never hold the appliance under running water.
- Regularly check the power plug and cord for any damage. If the power plug or power cord is damaged, it must be replaced by a service agent or similarly qualified persons in order to avoid danger or injury.
- Make sure the cord does not come in contact with sharp or hot objects and keep it away from open fire. To pull the plug out of the socket, always pull on the plug and not on the cord.
- Ensure that the cord (or extension cord) is positioned so that it will not cause a trip hazard.
- Always keep an eye on the appliance when in use.
- **WARNING!** As long as the plug is in the socket the appliance is connected to the power source.
- Turn off the appliance before pulling the plug out of the socket.
- Never carry the appliance by the cord.
- Do not use any extra devices that are not supplied along with the appliance.
- Only connect the appliance to an electrical outlet with the voltage and frequency mentioned on the appliance label.
- Connect the power plug to an easily accessible electrical outlet so that in case of emergency the appliance can be unplugged immediately. To completely switch off the appliance pull the power plug out of the electrical outlet.

EN



- Always turn the appliance off before disconnecting the plug.
- Never use accessories other than those recommended by the manufacturer. Failure to do so could pose a safety risk to the user and could damage the appliance. Only use original parts and accessories.
- This appliance is not intended for use by persons (including children) with reduced physical, sensory or mental capabilities, or lack of experience and knowledge.
- This appliance must not be used by children under any circumstances.
- Keep the appliance and its cord out of reach of children.
- Always disconnect the appliance from the mains if it is left unattended or is not in use, and before assembly, disassembly or cleaning.
- Never leave the appliance unattended during use.

---

## Special Safety Regulations

- Use the machine only as described in this manual.
- This machine should be operated and installed by specialized trained personnel in the kitchen of the food industry.
- All maintenance, installation and repair works should be performed by specialized trained authorized technicians.
- Do not place the machine on a heating object (gasoline, electric, charcoal cooker, etc.) Keep the appliance away from any hot surfaces and open flames. Always operate the machine on a level, stable, clean, heat-resistant and dry surface.
- Do not use the machine near explosive or flammable materials, credit cards, magnetic discs or radios.
- Wear protective clothing, mask, or protective glasses if necessary during operation.
- This machine is not intended to be operated by means of an external timer or separate remote-control system.
- Never bypass any safety interlocks on the machine.
- **WARNING:** Keep all ventilation openings in the appliance clear of obstruction.
- **WARNING: ALWAYS** switch off the machine and unplug from electrical power supply before cleaning, maintenance or storage.
- **WARNING! ALWAYS** keep hands, long hair and clothing away from the moving parts.
- Allow at least 20 cm spacing around the appliance for ventilation purpose during use.
- **CAUTION!** Securely route the power cord if necessary in order to prevent unintentional pulling or contact with the heating surface.
- Do not put hands into the jug set when the machine is in operation.
- Do not load too much ingredients in order to prevent overflow of the food products.
- **WARNING!** Do not fill above the **MAX.** mark of the jug.
- **WARNING!** Liquids to blend should be at or below room temperature. If you are going to blend warm liquids, ensure that the jug lid is correctly in place and use low speed for processing. Risk of burns and be careful.
- Do not wash the machine with water or a waterjet. Washing with water can cause leakage and increase the risk of electric shock. No parts are dishwasher safe.



- Do not clean or store the machine unless it is completely cooled down.
- Do not move the machine while it is under operation. Unplug the machine when moving the machine and hold it at the bottom.
- Do not operate the machine without ingredients to avoid overheated.
- Ensure the machine is switched OFF (0) and the speed dial in the "Low" position before removing the jug set.

### Intended use

- This appliance is intended for professional use.
- The appliance is designed for blending and mixing food. Any other use may lead to damage to the appliance or personal injury.
- Operating the appliance for any other purpose shall be deemed as a misuse of the device. The user shall be solely liable for improper use of the device.


### Grounding installation

This appliance is classified as **protection class I** and must be connected to a protective ground. Grounding reduces the risk of electric shock by providing an escape wire for the electric current.

This appliance is fitted with a power cord that has a grounding wire and grounded plug. The plug must be plugged into an outlet that is properly installed and grounded.

### Main parts of the machine



1. Power switch (0 / I)  
: Flip to "I" position to switch ON the machine;  
: Flip again to "0" position to switch OFF the machine
2. Speed dial (Low to High)  
: Dial clockwise to increase the rotation speed;  
: Dial anti-clockwise to decrease the rotation speed.
3. Pulse button : Full speed impulse movement. Press downwards to operate, release the button to stop.
4. Bottom of the motor base unit
5. Motor unit
6. Blade assembly
7. Jug set
8. Jug lid
9. Cover cap
10. Protective cover



## Special safety features

**IMPORTANT:** This machine has a specially designed safety feature: Protective cover (10).

The machine can only operate when the protective cover (10) is closed and the jug (7) is installed properly on the motor unit (5).

## Preparations before installation

- Remove all protective packaging and wrapping.
- Keep the packaging if you intend to store your appliance in the future.
- Check the machine for completeness and transport damages. In case of incomplete delivery (e.g. jug lid, etc) or damage, contact supplier immediately. DO NOT use the machine. (See ==> Warranty).
- Clean the machine and the jug (7) before use (See ==> Cleaning and Maintenance).
- Make sure the appliance is completely dry.

## Installation

- Read this manual thoroughly and carefully before installation and operation.
  - Ensure the machine is placed in a dry area and that the surface has sufficient strength to support the appliance. Also ensure that there are no obstructions nearby during operation of the appliance.
  - Ensure that the electrical power supply corresponds with the rating label on the machine.
- CAUTION! Never** bypass any safety micro switch.


## Transportation

- Do not move the machine while it is under operation. Unplug the machine when moving the machine.
- Always remove the jug set (7) when moving.
- Lift only at the bottom of the motor unit (4) when moving.

## Operation

**Note:** For safety reason, the appliance can only start to operate with the jug set (6) installed properly on the motor unit (5) and when the protective cover (10) is closed properly.

- Check if the power switch (1) is at the "0" position and turn the speed dial (2) to "Low" position.
- Unplug the machine and open the protective cover (10), take out the jug set (7) from the motor unit (5).
- Pour all the ingredients into the jug (7) and close the lid (8) and place the cover cap (9) correctly in place.
- Place the whole jug set (7) onto the motor unit (5) & close the protective cover (10).
- Connect the power plug to a suitable electrical power supply socket.
- Switch ON the machine by pressing the power switch (1) to "I" position & select a suitable speed by turning the speed dial (2).

Speed dial (2) setting	Description
Low speed	For mixing liquids
High speed	For mixing liquids and solid ingredients
Pulse function (0 / II) 	For ice crushing or short, power impulse movements. Note: Use the pulse function for 1 ~ 2 seconds each time. Repeated about several times if necessary.

After use, always turn the power switch (1) to "0" position and disconnect the plug from the electrical socket.



Remarks:

1. For the best results when blending solid food-stuffs, only add small portions in succession, not all ingredients at the same time.
2. Always start with lower speed. If necessary, then switch to the higher speed or to the "Pulse" function, so as not to jam the blade assembly (6).
3. Do not use this machine to blend hard food-stuff, such as nuts.
4. Do not fill liquids above the **MAX.** mark of the jug (7).
5. Liquids to be blend should be at or below room temperature. If you are going to blend warm liquids, ensure that the jug lid (8) is correctly in place and use low speed for processing. Risk of burns and be careful.
6. Avoid long period of operation due to the loud noise that may hurt the hearing.

## Cleaning and Maintenance

**Attention: Always unplug the appliance from the electrical power outlet and let it cool down completely before cleaning, maintenance, repair & storage.**

### Cleaning

- Clean the machine and the jug after each use and ensure all food residues are removed.
- Never immerse the appliance in water or other liquids.
- Clean the surface with a slightly damp cloth or sponge with some mild soap solution.
- Never use abrasive sponges, detergents, steel wool or metallic utensils to clean the interior or exterior parts of the appliance.
- **DO NOT** wash the machine with water or waterjet. Washing with water can cause leakage and increase the risk of electric shock.
- No any parts are dishwasher safe.

### Recommended cleaning procedure:

Parts	How to clean	Frequency
Motor unit (5)	<ul style="list-style-type: none"><li>- Never immerse this part into water or other liquids.</li><li>- Using a damp cloth with some detergent and water, rinse, sanitize and dry thoroughly.</li></ul>	Clean after each use
Jug, lid and cap	<ul style="list-style-type: none"><li>- Clean it with some water and some mild detergent.</li><li>- Then, rinse off under flowing water.</li><li>- Dry all parts before using again.</li></ul>	Clean after each use
Blade assembly (8)	<ul style="list-style-type: none"><li>- Warning! Risk of injury! Take great care when cleaning the blades.</li><li>- Clean it with some water and some mild detergent.</li><li>- Dry all parts before using again.</li></ul>	Clean after each use

### Storage

- Before storage, always make sure the appliance has already been disconnected from the electrical outlet and cooled down completely.
- Store the appliance in a cool, clean and dry place.



## Troubleshooting

If the appliance does not function properly, please check the below table for the solution. If you are still unable to solve the problem, please contact the supplier/service provider.

Problems	Possible causes	Possible solution
Machine does not start running	Protective cover (10) is not in properly closed position.	Check to make sure the protective cover (10) is closed properly.
	Jug (7) is not placed properly.	Check to make sure the jug set (7) properly.
	Power switch (1) is not pressed	Press the power switch (1)
Machine stops during operation	Built-in overloading safety activated.	- Switch OFF the machine by pressing the switch (1) to "0" position and unplug the machine. - Leaving the machine for cooling down for about 30 minutes and then start again.

In case of any doubt, always contact your supplier!

## Technical specification

Item no.: HND298060

Operating voltage and frequency: 240V~ 50/60Hz

Rated input power: 1,680W

Protection class: class I

Waterproof protection class: IP23

Maximum capacity: 2,5 L

Dimension: 252x258x(H)547 mm

Net weight: approx. 9,7 kg

Noise level: ≤ 85dB(A)

Rotation speed without loading (rpm):

- Minimum: 16,000 +/- 10%

- Maximum: 24,800 +/- 10%

Jar material: PC

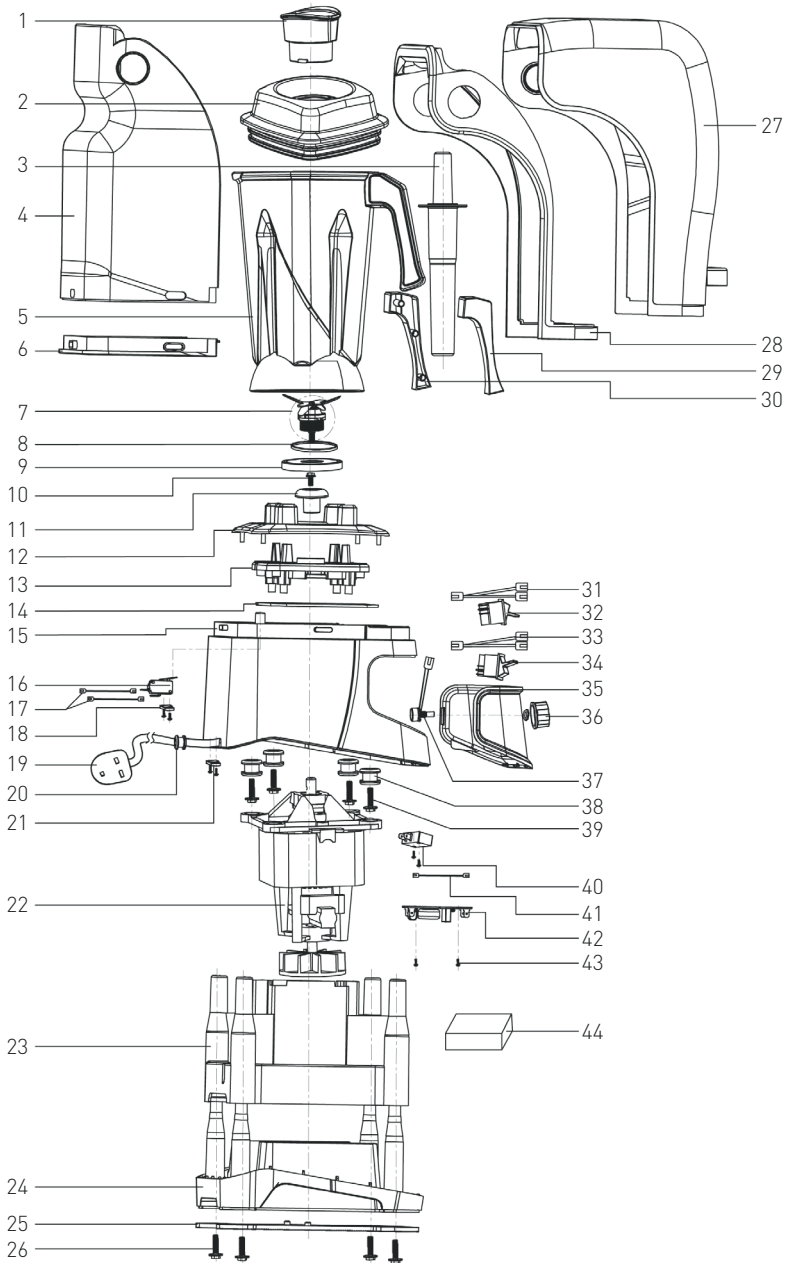
EN

**Remark: Technical specification is subjected to change without prior notification.**





# Machine exploded drawing

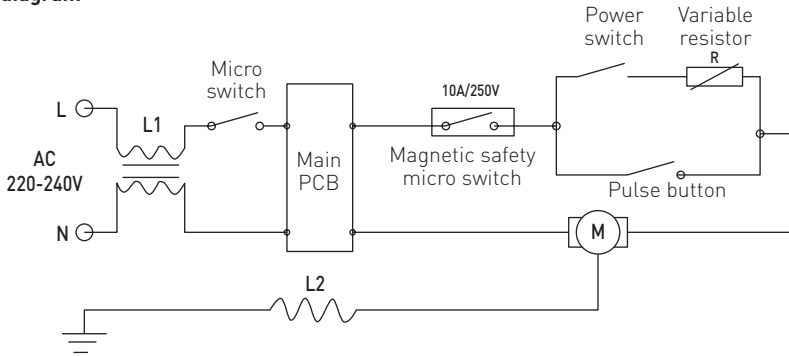


EN

## Machine part list

Part no.	Part name	Quantity	Part no.	Part name	Quantity
1	Cap cover	1	23	Motor inner housing	1
2	Jug lid	1	24	Bottom housing	1
3	Stamper (not supplied)	1	25	Bottom plate	1
4	Protective cover (rear)	1	26	Fixing screw	4
5	Jug set	1	27	Protective cover (front)	1
6	Protective cover rubber sealing (rear)	1	28	Protective cover (inner)	1
7	Blade assembly	1	29	Jug handle left cover	1
8	Seal ring of the blade assembly	1	30	Jug handle right cover	1
9	Large seal ring	1	31	Internal wire terminal for pulse button	1
10	Mounting screw	1	32	Pulse button	1
11	Clutch	1	33	Internal wire terminal for power switch	1
12	Jug holder	1	34	Power switch	1
13	Jug holder support	1	35	Control panel cover	1
14	Rubber seal cover	1	36	Speed dial	1
15	Motor outer housing	1	37	Internal wire terminal for speed dial	1
16	Safety micro switch assembly	1	38	Anti-shock dampers	4
17	Internal wire terminal for safety micro switch	1	39	Mounting screws for anti-shock dampers	4
18	Mounting screws for the micro switch	2	40	Magnetic micro switch assembly	1
19	Power plug	1	41	Internal wire terminal for the magnetic switch	1
20	Power cord	1	42	PCB assembly	1
21	Power cord clamp	1	43	Screws for fixing PCB assembly	4
22	Motor assembly	1	44	Sound absorption cotton	1

## Circuit diagram



## Important notice to UK users

This appliance is fitted with a UK approved mains plug and a 13A fuse. Should the fuse need to be replaced, an ASTA or BSI approved BS1362 fuse, rated at 13A must be used. If the plug needs re-

placing, ensure that the fuse is removed beforehand. Always dispose of defunct plugs and fuses immediately.

## Warranty

Any defect affecting the functionality of the appliance which becomes apparent within one year after purchase will be repaired by free repair or replacement provided the appliance has been used and maintained in accordance with the instructions and has not been abused or misused in any way. Your statutory rights are not affected. If the appliance is claimed under warranty, state

where and when it was purchased and include proof of purchase (e.g. receipt).

In line with our policy of continuous product development we reserve the right to change the product, packaging and documentation specifications without notice.

## Discarding & Environment

When decommissioning the appliance, the product must not be disposed of with other household waste. Instead, it is your responsibility to dispose to your waste equipment by handing it over to a designated collection point. Failure to follow this rule may be penalized in accordance with applicable regulations on waste disposal. The separate collection and recycling of your waste equipment at the time of disposal will help conserve natural resources and ensure that it is

recycled in a manner that protects human health and the environment.

For more information about where you can drop off your waste for recycling, please contact your local waste collection company. The manufacturers and importers do not take responsibility for recycling, treatment and ecological disposal, either directly or through a public system.

EN





# HENDI

Tools for Chefs

---

**Manufacturer: Hendi B.V.**

Innovatielaan 6

6745 XW De Klomp, The Netherlands

**Tel:** +31 317 681 040

**Email:** [info@hendi.eu](mailto:info@hendi.eu)

**Hendi HK Ltd.**

1208, 12/F, Exchange Tower

33 Wang Chiu Road, Kowloon Bay, Hong Kong

**Tel:** +852 2154 2618

**Email:** [info-hk@hendi.eu](mailto:info-hk@hendi.eu)

**Importer: Neville UK PLC**

Unit 6, Viking Way, Erith, Kent.

DA8 1EW, England

<https://www.nevilleuk.com/>

**Find Hendi on internet:**

[www.hendi.eu](http://www.hendi.eu)

[www.facebook.com/HendiToolsforChefs](https://www.facebook.com/HendiToolsforChefs)

[www.linkedin.com/company/hendi-food-service-equipment-b.v.](https://www.linkedin.com/company/hendi-food-service-equipment-b.v.)

[www.youtube.com/HendiEquipment](https://www.youtube.com/HendiEquipment)

- Changes, printing and typesetting errors reserved.