

# ELECTRIC RANGE CONVECTION OVEN 900mm - SEALED HOBS

E56S

- Heavy-duty construction
- 2.6kW cast iron hot plate elements
- GN 2/1 6.6kW electric convection oven
- Drop down door
- Rear rollers
- Stainless steel exterior
- Easy clean
- Easy service
- Fully modular



E56S

## Overall Construction

- Galvanized steel chassis
- Welded hob with one-piece formed 2.0mm 304 stainless steel top
- Hob sides 1.2mm 304 stainless steel
- Splashback 1.2mm 304 stainless steel
- Front panels and oven sides 0.9mm 304 stainless steel
- Vitreous enamelled hob control panel
- 63mm dia. heavy-duty 1.2mm 304 stainless steel adjustable legs at front and two rollers at rear

## Cooktop

- 2.6kW cast iron hot plate elements with thermal protection
- Aluminised steel internal construction

## Oven

- Fully welded and vitreous enamelled oven liner
- GN 2/1 capacity with 4 position racking
- Heavy-duty easy remove heavy wire chrome rack supports
- Cast iron even heat oven sole plate
- 6.5kW heating elements
- 100W heavy-duty motor
- 200mm diameter heavy-duty circulation fan
- Drop down door
- 0.9mm 304 stainless steel door outer
- 1.0mm vitreous enamelled door inner
- High density fibreglass insulated
- Supplied with two chrome wire oven racks

## Controls

- Large easy use control knob - heat resistant reinforced
- Easy view control settings on knob

## Cooktop

- Cast iron hot plate elements with 6 heat position switch
- Power indicator light for each element control

## Oven

- 50-320°C thermostatic control
- Indicator lights for power and heating
- Fan and elements automatic off when doors open

## Cleaning and Servicing

- All models with easy clean stainless steel external finish
- One-piece worktop with formed hob wells to contain spills
- Removable oven racking and sole plate
- Easy clean vitreous enamel oven and door inner
- Access to all parts from front of unit

# ELECTRIC RANGE CONVECTION OVEN 900mm - SEALED HOBS

E56S

## Specifications

### Cooktop

2.6 kW Cast Iron Hot Plate elements

### Oven

4.5kW bottom heat element  
2.0kW top heat element

### Oven Fan Motor

100W

### Electrical requirements

E56S 22.2 kW

### Electrical connection

22.2 kW max  
400-415Vac, 50/60hz, 3P+N+E  
L1 31.0A max  
L2 31.0A max  
L3 30.0A max

### Oven Dimensions

Width 665mm  
Depth 590mm  
Height 400mm  
Rack size 650mm x 600mm  
Rack positions 4

### Dimensions

Width 900mm  
Depth 812mm  
Height 915mm  
Incl. splashback 1085mm

### Nett weight

198kg

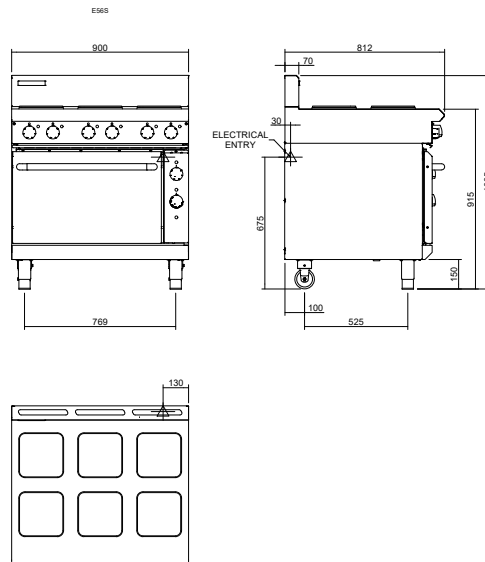
### Packing data

1.03m<sup>3</sup>, 263kg  
Width 945mm  
Depth 870mm  
Height 1255mm

### Options

Adjustable feet at rear  
Joining caps  
Castors

E56S



[www.blue-seal.co.uk](http://www.blue-seal.co.uk)

United Kingdom  
[blue-seal.co.uk](http://blue-seal.co.uk)

**Blue Seal Limited**  
Unit 67  
Gravelly Business Park  
Gravelly  
Birmingham B24 8TQ  
England  
Telephone 0121-327 5575  
Facsimile 0121-327 9711  
[sales@blue-seal.co.uk](mailto:sales@blue-seal.co.uk)

Australia  
[moffat.com.au](http://moffat.com.au)

**Moffat Pty Limited**  
740 Springvale Road  
Mulgrave  
Victoria 3170  
Australia  
Telephone +613-9518 3888  
Facsimile +613-9518 3833  
[vsales@moffat.com.au](mailto:vsales@moffat.com.au)

New Zealand  
[moffat.co.nz](http://moffat.co.nz)

**Moffat Limited**  
45 Illinois Drive  
Izone Business Hub  
Rolleston 7675  
New Zealand  
Telephone +64 3-983 6600  
Facsimile +64 3-983 6660  
[sales@moffat.co.nz](mailto:sales@moffat.co.nz)

International  
[moffat.com](http://moffat.com)  
[international@moffat.co.nz](mailto:international@moffat.co.nz)



Designed and manufactured by



ISO9001

All Blue Seal products are designed and manufactured by Moffat using the internationally recognised ISO9001 quality management system, covering design, manufacture and final inspection, ensuring consistent high quality at all times.

In line with policy to continually develop and improve its products, Moffat Limited reserves the right to change specifications and design without notice.



Copyright Moffat Ltd.  
UK.BS.01.22

an Ali Group Company



The Spirit of Excellence