

dpHUE™

Which Root Touch-Up Kit Shade is Right for My Client?

Permanently keep grays in check between hair color appointments.

Choose from 7 colors and stay within one shade of natural color. Not intended for drastic color changes or to lighten hair.



Instruct your client:

- Use on up to 1" of new gray hair, at part line and hairline.
- Don't worry about the back of their head and hard to reach spots, you will take care of that at your next appointment!

Low ammonia, salon-quality crème hair color made in Italy. Designed to blend seamlessly into base hair color with a neutral finish.

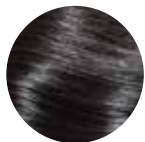
\$30 | Two applications per kit.

- Color
- 10 Vol Developer
- Brush
- Mixing Bowl
- Gloves
- Hair Cap

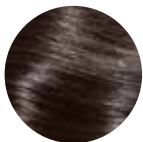


Blacks & Brunettes

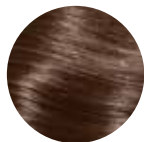
Neutral, rich brunette tones



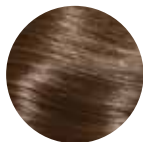
Black
(4.0)



Dark Brown
(5.0)



Medium Brown
(6.0)



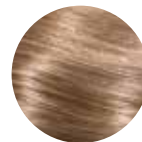
Light Brown
(7.0)

Blondes

Touch of Ash to counteract warm tones



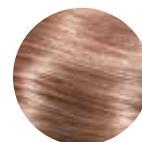
Dark Blonde
(8.01)



Medium Blonde
(9.01)

Red

Underlying warmth pulls through



Strawberry
(8.0)