



# Certificate of Analysis

## CANNABUSINESS LABORATORIES, LLC

### Customer:

Hectare's LLC  
819 E. Market St., Suite 101  
Louisville, KY 40206

Sample ID **221024004**  
Order Number **CB221024001**  
Sample Name **Blood Orange 3mg THC/6mg CBD**

Received Date **10/25/2022**  
COA Released **10/26/2022**

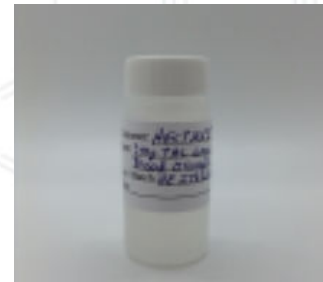
External Sample ID  
Batch Number **HE2732202-01**  
Product Type **Edible**  
Sample Type **Edible**

Comments *d9-THC analysis performed by LCMS-8050*  
*5.27mg CBD/2.5oz*  
*2.60mg THC/2.5oz*

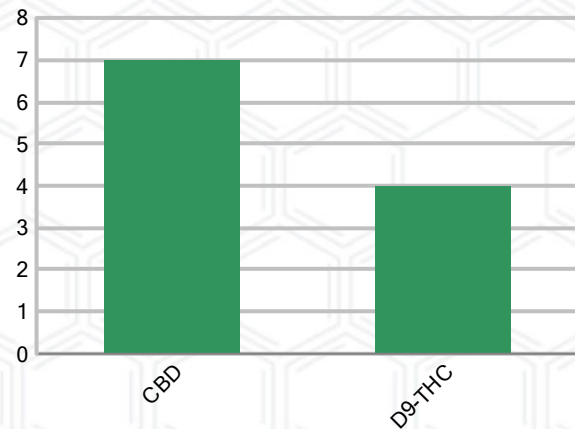
### CANNABINOID PROFILE

| Analyte  | LOQ (%) | % Weight     | mg/mL           |
|--|---------|--------------|-----------------|
| CBC  | 0.01    | ND           | ND              |
| CBD  | 0.005   | 0.007        | 0.071           |
| CBDa   | 0.01    | ND           | ND              |
| CBDV   | 0.01    | ND           | ND              |
| CBG  | 0.01    | ND           | ND              |
| CBGa   | 0.01    | ND           | ND              |
| CBN  | 0.01    | ND           | ND              |
| d8-THC   | 0.01    | ND           | ND              |
| d9-THC   | 0.0004  | 0.004        | 0.035           |
| THCa   | 0.01    | ND           | ND              |
| <b>Total Cannabinoids</b>                                  |         | <b>0.011</b> | <b>0.106</b>    |
| <b>Total Potential THC</b>                                 |         | <b>0.004</b> | <b>0.035</b>    |
| <b>Total Potential CBD</b>                                 |         | <b>0.007</b> | <b>0.071</b>    |
| <b>Total Potential CBG</b>                                 |         | <b>N/A</b>   | <b>N/A</b>      |
| <b>Ratio of Total Potential CBD to Total Potential THC</b> |         |              | <b>1.75 : 1</b> |
| <b>Ratio of Total Potential CBG to Total Potential THC</b> |         |              | <b>N/A</b>      |

### SAMPLE IMAGE



### CANNABINOIDS % Weight



\*Total Cannabinoids refers to the sum of all cannabinoids detected.

\*Total Potential CBD = (0.877 x CBDa) + CBD. \*Total Potential THC = (0.877 x THCa) + THC. \*Total Potential CBG = (0.877 x CBGa) + CBG.

\*Total Potential THC/CBD are calculated to take into account the loss of an acid group during decarboxylation.



*J. Hobgoud*  
Laboratory Manager  
SIGNATURE

Jamie Hobgoud  
LABORATORY MANAGER

10/26/2022 4:56 PM  
DATE

This product has been tested by CannaBusiness Laboratories using validated testing methodologies and a quality system. Values reported relate only to the product tested. CannaBusiness Laboratories makes no claims as to the efficacy, safety, or other risks associated with any detected or non-detected levels of any compounds reported herein. This Certificate shall not be reproduced except in full, without the written permission of CannaBusiness Laboratories. Photo is of sample received by the lab and may vary from final packaging. The results apply to the sample as received.



# Certificate of Analysis

**CANNABUSINESS LABORATORIES, LLC**

**Customer**

Hectare's LLC  
819 E. Market St., Suite 101  
Louisville, KY 40206



| Overall Batch Results |                   |
|-----------------------|-------------------|
| Pesticide             | Moisture Content  |
| Potency               | Water Activity    |
| Mycotoxins            | Heavy Metals      |
| Microbial Screen      | Residual Solvents |
| Terpenoids            |                   |

**Sample Name:** Blood Orange 3mg THC/6mg CBD  
**Sample ID:** 221024004  
**Order Number:** CB221024001  
**Product Type:** Edible  
**Sample Type:** Edible  
**Received Date:** 10/25/2022  
**Batch Number:** HE2732202-01  
**COA released:** 10/26/2022 4:56 PM

| Potency (mg/mL)         |                    |
|-------------------------|--------------------|
| Date Tested: 10/26/2022 | Method: CB-SOP-028 |
| Instrument:             |                    |

|                             |                             |                                      |  |
|-----------------------------|-----------------------------|--------------------------------------|--|
| <b>0.004 %</b><br>Total THC | <b>0.007 %</b><br>Total CBD | <b>0.011 %</b><br>Total Cannabinoids | <b>0.106 mg/mL</b><br>Total Cannabinoids |
|-----------------------------|-----------------------------|--------------------------------------|--|

| Analyte                            | Result | Units | LOQ   | Result | Units |
|------------------------------------|--------|-------|-------|--------|-------|
| CBC (Cannabichromene)              | ND     | %     | 0.010 | ND     | mg/mL |
| CBD (Cannabidiol)                  | 0.007  | %     | 0.005 | 0.071  | mg/mL |
| CBDa (Cannabidiolic Acid)          | ND     | %     | 0.010 | ND     | mg/mL |
| CBDV (Cannabidivarin)              | ND     | %     | 0.010 | ND     | mg/mL |
| CBG (Cannabigerol)                 | ND     | %     | 0.010 | ND     | mg/mL |
| CBGa (Cannabigerolic Acid)         | ND     | %     | 0.010 | ND     | mg/mL |
| CBN (Cannabinol)                   | ND     | %     | 0.010 | ND     | mg/mL |
| D8-THC (D8-Tetrahydrocannabinol)   | ND     | %     | 0.010 | ND     | mg/mL |
| D9-THC (D9-Tetrahydrocannabinol)   | 0.004  | %     | 0.000 | 0.035  | mg/mL |
| THCa (Tetrahydrocannabinolic Acid) | ND     | %     | 0.010 | ND     | mg/mL |



*J.Hobgood*  
Laboratory Manager

Jamie Hobgood

10/26/2022 4:56 PM

SIGNATURE

DATE

NT = Not tested, ND = Not detected; LOQ = Limit of Quantitation; <LOQ = Detected; >ULOL = Above upper limit of linearity; CFU/g = Colony forming units per 1 gram; TNTC = Too numerous to count

This product has been tested by CannaBusiness Laboratories using validated testing methodologies and a quality system. Values reported relate only to the product tested. CannaBusiness Laboratories makes no claims as to the efficacy, safety, or other risks associated with any detected or non-detected levels of any compounds reported herein. This Certificate shall not be reproduced except in full, without the written permission of CannaBusiness Laboratories. Photo is of sample received by the lab and may vary from final packaging. The results apply to the sample as received.