



Runtz

Sample 432-041223-118

Candy Gas

Batch/Lot # 748996

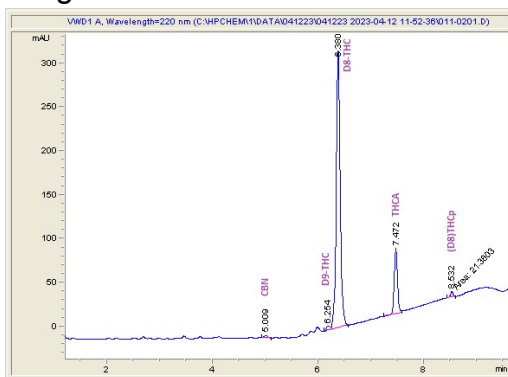
Sample Submitted: 04-12-2023; Report Date: 04-13-2023

## Candy Gas

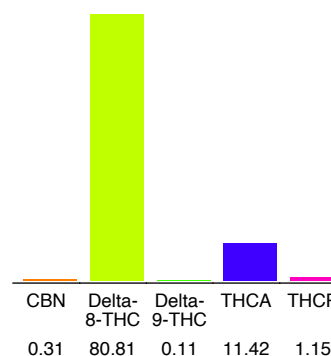
Batch/Lot # 748996

Distillate

### Chromatogram



### Cannabinoid Profile



### Cannabinoid Profile by HPLC

**0.11%**  
Delta-9-THC

**0.00%**  
CBD

**93.80%**  
Total Cannabinoids

Cannabinoid	% wt	mg/g
CBN	0.31	3.1
Delta-8-THC	80.81	808.1
Delta-9-THC	0.11	1.1
THCA	11.42	114.2
THCP	1.15	11.5
<b>Total Cannabinoids</b>	<b>93.80</b>	<b>938.0</b>
<b>Calculated Delta-9-THC Yield</b>	<b>10.13</b>	<b>101.25</b>
<b>Calculated CBD Yield</b>	<b>0.00</b>	<b>0.00</b>

Calculated Maximum Delta-9-THC Yield = Delta-9-THC + 0.877 \* THCA  
 Calculated Maximum CBD Yield = CBD + 0.877 \* CBDA

**Marin Analytics, LLC**  
 250 Bel Marin Keys Blvd, Suite D4  
 Novato, CA 94949

415-936-6477 / sarabiancalana1@gmail.com

*Sara Biancalana*  
**Sara Biancalana**  
 Chief Scientist

This sample has been tested by Marin Analytics, LLC using valid testing methodologies and a quality system. Values reported relate only to the sample tested. Marin Analytics, LLC makes no claims as to the efficacy, safety or other risks associated with any detected or non-detected levels of any compounds reported herein. This Certificate shall not be reproduced except in full, without the written approval of Marin Analytics, LLC. Copyright 2022 Marin Analytics, LLC All Rights Reserved.



Runtz

Sample 432-041223-119

Peach Cobbler

Batch/Lot # 748995

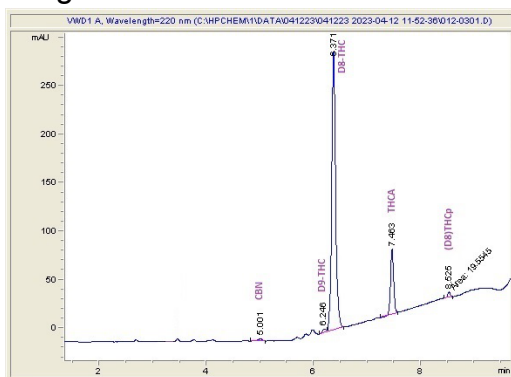
Sample Submitted: 04-12-2023; Report Date: 04-13-2023

## Peach Cobbler

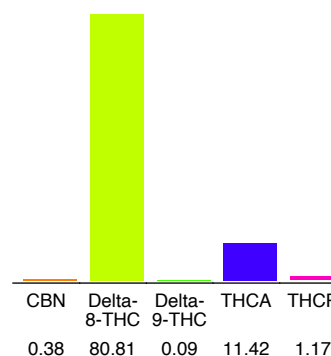
Batch/Lot # 748995

Distillate

### Chromatogram



### Cannabinoid Profile



### Cannabinoid Profile by HPLC

**0.09%**  
Delta-9-THC

**0.00%**  
CBD

**93.87%**  
Total Cannabinoids

Cannabinoid	% wt	mg/g
CBN	0.38	3.8
Delta-8-THC	80.81	808.1
Delta-9-THC	0.09	0.9
THCA	11.42	114.2
THCP	1.17	11.7
<b>Total Cannabinoids</b>	<b>93.87</b>	<b>938.7</b>
<b>Calculated Delta-9-THC Yield</b>	<b>10.11</b>	<b>101.05</b>
<b>Calculated CBD Yield</b>	<b>0.00</b>	<b>0.00</b>

Calculated Maximum Delta-9-THC Yield = Delta-9-THC + 0.877 \* THCA  
 Calculated Maximum CBD Yield = CBD + 0.877 \* CBDA

**Marin Analytics, LLC**  
 250 Bel Marin Keys Blvd, Suite D4  
 Novato, CA 94949

415-936-6477 / sarabiancalana1@gmail.com

**Sara Biancalana**  
 Chief Scientist

This sample has been tested by Marin Analytics, LLC using valid testing methodologies and a quality system. Values reported relate only to the sample tested. Marin Analytics, LLC makes no claims as to the efficacy, safety or other risks associated with any detected or non-detected levels of any compounds reported herein. This Certificate shall not be reproduced except in full, without the written approval of Marin Analytics, LLC. Copyright 2022 Marin Analytics, LLC All Rights Reserved.



Runtz

Sample 432-041223-120

Pink Runtz

Batch/Lot # 748994

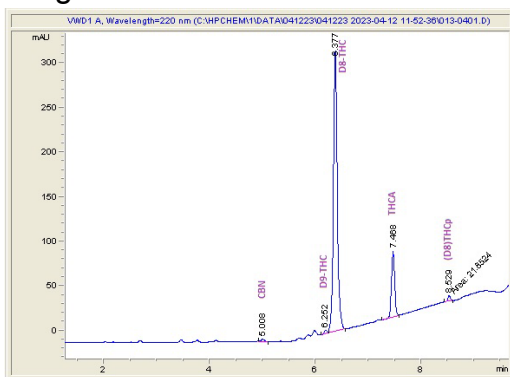
Sample Submitted: 04-12-2023; Report Date: 04-13-2023

## Pink Runtz

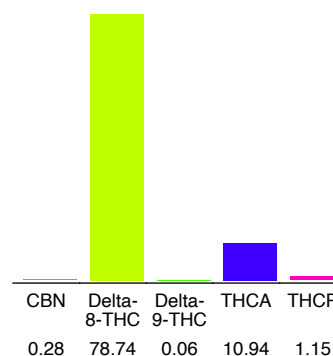
Batch/Lot # 748994

Distillate

### Chromatogram



### Cannabinoid Profile



### Cannabinoid Profile by HPLC

**0.06%**  
Delta-9-THC

**0.00%**  
CBD

**91.17%**  
Total Cannabinoids

Cannabinoid	% wt	mg/g
CBN	0.28	2.8
Delta-8-THC	78.74	787.4
Delta-9-THC	0.06	0.6
THCA	10.94	109.4
THCP	1.15	11.5
<b>Total Cannabinoids</b>	<b>91.17</b>	<b>911.7</b>
<b>Calculated Delta-9-THC Yield</b>	<b>9.65</b>	<b>96.54</b>
<b>Calculated CBD Yield</b>	<b>0.00</b>	<b>0.00</b>

Calculated Maximum Delta-9-THC Yield = Delta-9-THC + 0.877 \* THCA  
 Calculated Maximum CBD Yield = CBD + 0.877 \* CBDA

**Marin Analytics, LLC**  
250 Bel Marin Keys Blvd, Suite D4  
Novato, CA 94949

415-936-6477 / sarabiancalana1@gmail.com

*Sara Biancalana*  
**Sara Biancalana**  
Chief Scientist

This sample has been tested by Marin Analytics, LLC using valid testing methodologies and a quality system. Values reported relate only to the sample tested. Marin Analytics, LLC makes no claims as to the efficacy, safety or other risks associated with any detected or non-detected levels of any compounds reported herein. This Certificate shall not be reproduced except in full, without the written approval of Marin Analytics, LLC. Copyright 2022 Marin Analytics, LLC All Rights Reserved.



Runtz

Sample 432-041223-121

Platinum OG

Batch/Lot # 748998

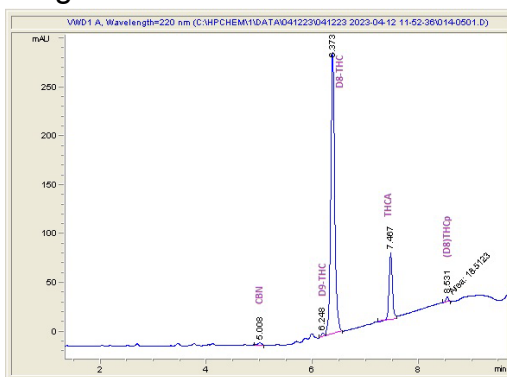
Sample Submitted: 04-12-2023; Report Date: 04-13-2023

## Platinum OG

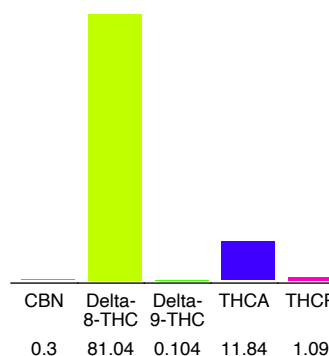
Batch/Lot # 748998

Distillate

### Chromatogram



### Cannabinoid Profile



### Cannabinoid Profile by HPLC

**0.10%**  
Delta-9-THC

**0.00%**  
CBD

**94.37%**  
Total Cannabinoids

Cannabinoid	% wt	mg/g
CBN	0.3	3.0
Delta-8-THC	81.04	810.4
Delta-9-THC	0.104	1.04
THCA	11.84	118.4
THCP	1.09	10.9
<b>Total Cannabinoids</b>	<b>94.37</b>	<b>943.7</b>
<b>Calculated Delta-9-THC Yield</b>	<b>10.49</b>	<b>104.88</b>
<b>Calculated CBD Yield</b>	<b>0.00</b>	<b>0.00</b>

Calculated Maximum Delta-9-THC Yield = Delta-9-THC + 0.877 \* THCA  
 Calculated Maximum CBD Yield = CBD + 0.877 \* CBDA

**Marin Analytics, LLC**

250 Bel Marin Keys Blvd, Suite D4  
Novato, CA 94949

415-936-6477 / sarabiancalana1@gmail.com

**Sara Biancalana**  
Chief Scientist

This sample has been tested by Marin Analytics, LLC using valid testing methodologies and a quality system. Values reported relate only to the sample tested. Marin Analytics, LLC makes no claims as to the efficacy, safety or other risks associated with any detected or non-detected levels of any compounds reported herein. This Certificate shall not be reproduced except in full, without the written approval of Marin Analytics, LLC. Copyright 2022 Marin Analytics, LLC All Rights Reserved.



Runtz

Sample 432-041223-122

RS11

Batch/Lot # 748997

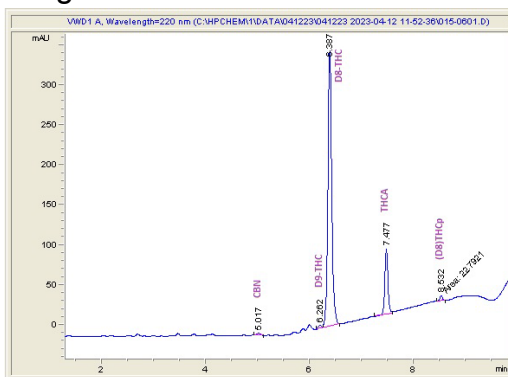
Sample Submitted: 04-12-2023; Report Date: 04-13-2023

RS11

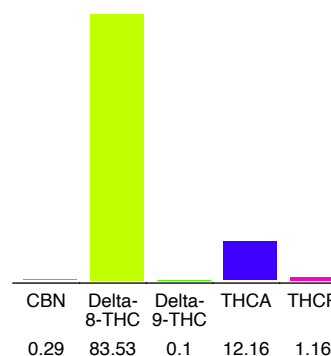
Distillate

Batch/Lot # 748997

## Chromatogram



## Cannabinoid Profile



## Cannabinoid Profile by HPLC

**0.10%**  
Delta-9-THC

**0.00%**  
CBD

**97.24%**  
Total Cannabinoids

Cannabinoid	% wt	mg/g
CBN	0.29	2.9
Delta-8-THC	83.53	835.3
Delta-9-THC	0.1	1.0
THCA	12.16	121.6
THCP	1.16	11.6
<b>Total Cannabinoids</b>	<b>97.24</b>	<b>972.4</b>
<b>Calculated Delta-9-THC Yield</b>	<b>10.76</b>	<b>107.64</b>
<b>Calculated CBD Yield</b>	<b>0.00</b>	<b>0.00</b>

Calculated Maximum Delta-9-THC Yield = Delta-9-THC + 0.877 \* THCA  
 Calculated Maximum CBD Yield = CBD + 0.877 \* CBDA

**Marin Analytics, LLC**  
 250 Bel Marin Keys Blvd, Suite D4  
 Novato, CA 94949

415-936-6477 / sarabiancalana1@gmail.com

*Sara Biancalana*  
**Sara Biancalana**  
 Chief Scientist

This sample has been tested by Marin Analytics, LLC using valid testing methodologies and a quality system. Values reported relate only to the sample tested. Marin Analytics, LLC makes no claims as to the efficacy, safety or other risks associated with any detected or non-detected levels of any compounds reported herein. This Certificate shall not be reproduced except in full, without the written approval of Marin Analytics, LLC. Copyright 2022 Marin Analytics, LLC All Rights Reserved.



Runtz

Sample 432-041223-123

ZOAP

Batch/Lot # 748993

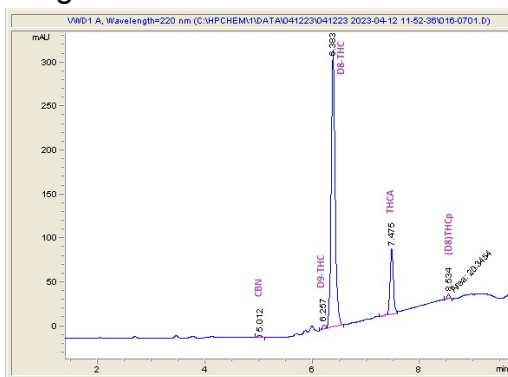
Sample Submitted: 04-12-2023; Report Date: 04-13-2023

## ZOAP

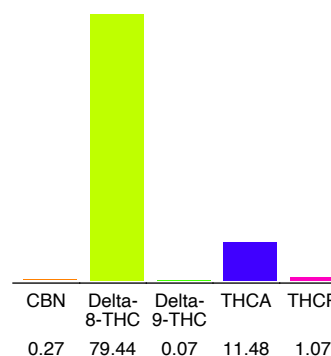
Distillate

Batch/Lot # 748993

### Chromatogram



### Cannabinoid Profile



### Cannabinoid Profile by HPLC

**0.07%**  
Delta-9-THC

**0.00%**  
CBD

**92.33%**  
Total Cannabinoids

Cannabinoid	% wt	mg/g
CBN	0.27	2.7
Delta-8-THC	79.44	794.4
Delta-9-THC	0.07	0.7
THCA	11.48	114.8
THCP	1.07	10.7
<b>Total Cannabinoids</b>	<b>92.33</b>	<b>923.3</b>
<b>Calculated Delta-9-THC Yield</b>	<b>10.14</b>	<b>101.38</b>
<b>Calculated CBD Yield</b>	<b>0.00</b>	<b>0.00</b>

Calculated Maximum Delta-9-THC Yield = Delta-9-THC + 0.877 \* THCA  
 Calculated Maximum CBD Yield = CBD + 0.877 \* CBDA

**Marin Analytics, LLC**  
 250 Bel Marin Keys Blvd, Suite D4  
 Novato, CA 94949  
 415-936-6477 / sarabiancalana1@gmail.com

*Sara Biancalana*  
**Sara Biancalana**  
 Chief Scientist

This sample has been tested by Marin Analytics, LLC using valid testing methodologies and a quality system. Values reported relate only to the sample tested. Marin Analytics, LLC makes no claims as to the efficacy, safety or other risks associated with any detected or non-detected levels of any compounds reported herein. This Certificate shall not be reproduced except in full, without the written approval of Marin Analytics, LLC. Copyright 2022 Marin Analytics, LLC All Rights Reserved.