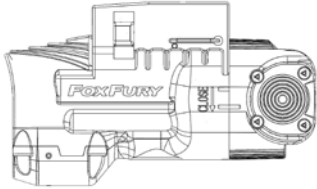




**AWL SERIES  
AMPHIBIOUS WEAPON LIGHT FOR PISTOLS  
OPERATING INSTRUCTIONS**

- |         |                                 |
|---------|---------------------------------|
| 700-200 | AWL-P                           |
| 700-201 | AWL-P Laser-Tac                 |
| 700-202 | AWL-P ON-OFF Only               |
| 700-203 | AWL-P with Laser, Single Switch |



Please read the below before using your AWL weapon light as it relays beneficial operating and safety information.

**PHYSICAL CHARACTERISTICS:**

- Nylon housing

Length	3.1" (80 mm)
Weight	2.4 oz (68 g)

**BATTERIES:**

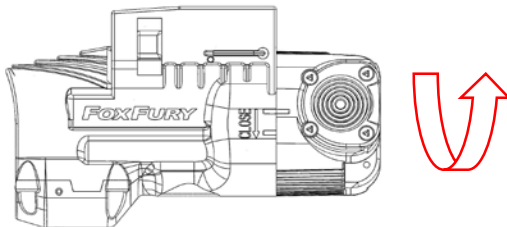
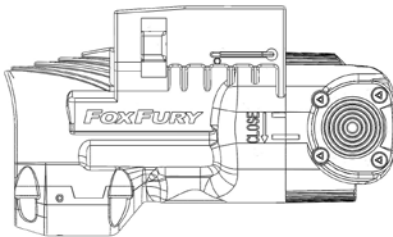
The AWL Series Lights require one (1) CR123 battery.

**NOTE:** Respect the polarity of the battery when installing. Failure to do so may result in explosions due to gaseous emissions from a leaking battery.

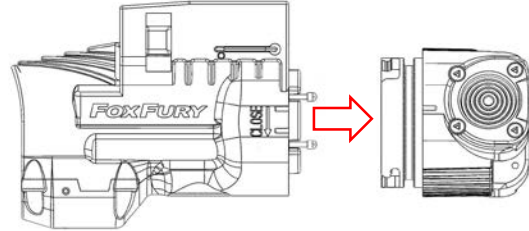
**BATTERY INSTALLATION:**

All AWL Models:

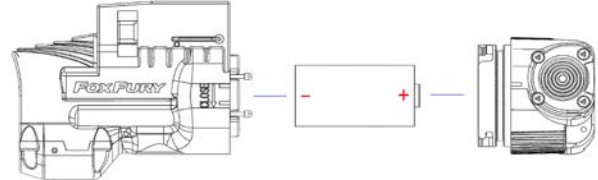
- Unlock the rear cap by twisting it clockwise (up) so the alignment indicator shifts from the lower marker to the upper one.



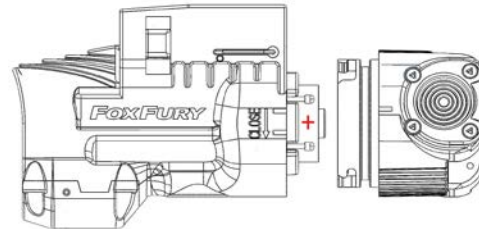
- Pull rear cap straight back. Pressure may need to be applied to overcome watertight seal from the O-ring.



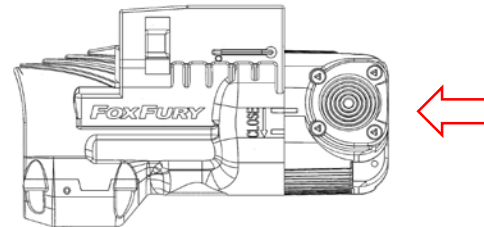
- Place the battery into the AWL negative (-) side first.



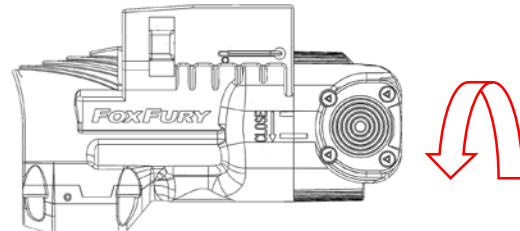
The positive side should be slightly exposed when the battery is inserted into the main body of the AWL.



- Push the cap and main body together, respecting the alignment markers. While pressing the cap together, additional pressure may be needed to overcome the watertight seal from the O-ring.



- Twist cap to counter-clockwise (down) to lock in the closed position. After confirming the cap has been locked and AWL is operational, the light is ready to be installed to the weapon.



**OPERATIONAL MODES:**

\*\*P/N 700-202 is ON/OFF Only.

MODE	700-200
1	Press & Hold: Momentary (Temporary On)
2*	Press Twice: Continuous On
3*	Press 3 Times: Turbo-Strobe (Continuous)

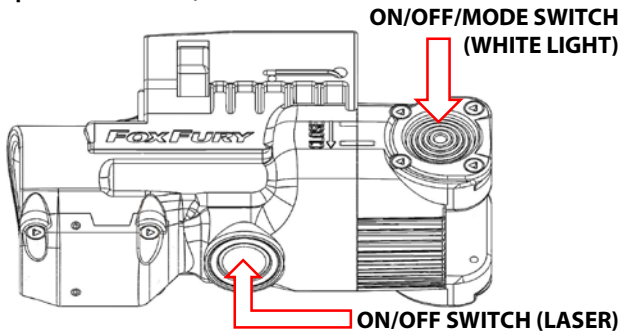
\*To turn OFF from modes 2 or 3, simply tap either switch.

MODE	700-201
1	Press & Hold: Momentary (Temporary On)
2*	Press Twice: Continuous On
3*	Press 3 Times: Turbo-Strobe (Continuous)

\* To turn OFF from modes 2 or 3, simply tap either switch.  
NOTE: Separate switch for laser, self lock type.

MODE	700-203
1	Press & Hold: Momentary (Temporary On)
2*	Press Twice: Continuous On
3*	Press 3 Times: Turbo-Strobe (Continuous)

\* To turn OFF from modes 2 or 3, simply tap either switch.  
NOTE: P/N 700-203 uses same switch for light & laser (there is no separate laser switch).



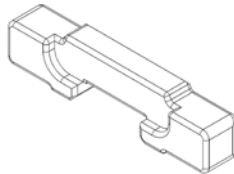
**INSTALL YOUR AWL ON YOUR WEAPON:**

\*\*Note that the AWL comes with two locking bars, each designed to fit specific types of weapons.

- A slim locking bar is included which is pre-installed in the AWL as this fits the most popular style of firearms.
- If your pistol/weapon features a full picatinny style system, you will want to use the full size locking bar (included as an accessory).

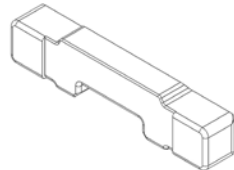
**Slim Locking Bar**

- Pre-Installed on AWL.
- Fits Glock-style or "universal" rail styles.



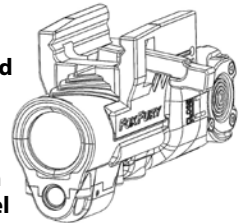
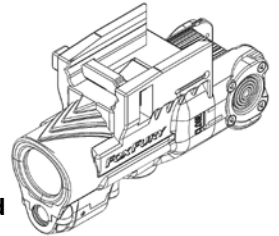
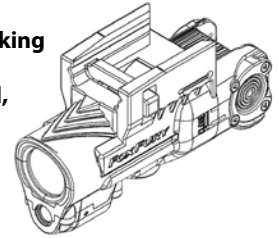
**Full-size Locking Bar**

- Included in packaging as an accessory locking bar.
- Fits Picatinny or MIL-STD 1913 rail styles.



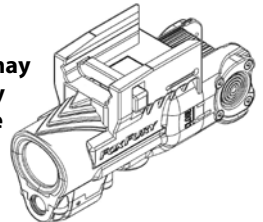
**REPLACING/CHANGING THE LOCKING BAR:**

1. The top spring must be depressed to release the locking bar. To confirm that the top spring is fully depressed, push down on both sides of the locking bar. While fully depressed, with other hand, press on top spring keeping it held at the same distance.
2. Lift up on the locking bar while keeping the top spring fully depressed. Keeping the top spring depressed, push the locking bar to either side. It should then release from the AWL housing and easily be pulled out.
3. To re-install locking bar; push the locking bar through the side openings at a slight upward angle (to be inserted above top spring plate).



Once the locking bar is through the opening, push down to level the bar. Then the bar can be pushed all the way in (through the opening on the opposite side).

4. The locking bar will then be secured into position. You may hear a "click" when correctly locked. The AWL will now be ready for use and for installation.



**SECURING AWL TO WEAPON:**

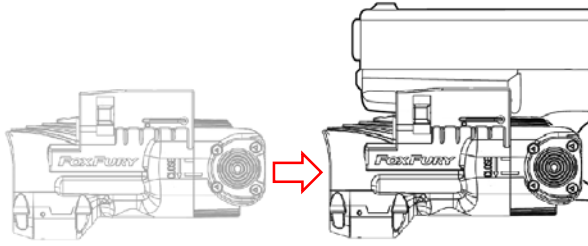
\*\* Always make sure weapon is unloaded and in safe operating position while installing or removing AWL.

Slide the AWL into the weapon's rail system, towards the trigger guard. The locking bar should automatically fall into the secured position with the rail, aligning with the mating groove.

\* On some rail systems, you may need to press down on the locking bar while installing to rail.

After the AWL is installed, check that the unit is firmly secured to weapon before use.

To remove from weapon, pull locking bar down, and push unit off towards front of weapon.



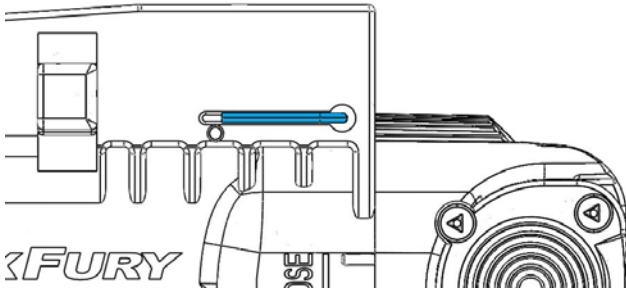
**AMBIDEXTERITY:**

The AWL is completely ambidextrous, allowing you the use of either hand at will. Both switches function in the same manner, allowing both hands to perform the exact same action for any of the three modes.

**LASER POSITIONING P/N 700-201 ONLY:**

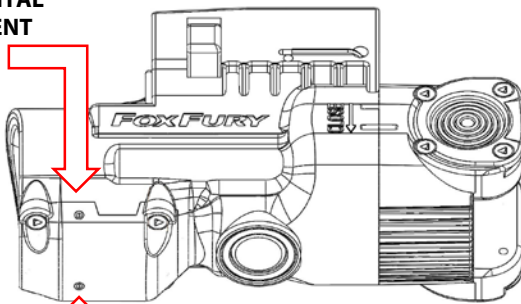
A hex key is included for realigning the position of the laser. Please use as needed.

The hex key can be stored with the AWL. Please reference the image below. The hex key is shaded in blue. It can be pushed out from the opposite side with a small pin. After adjustment is made, it can be re-inserted into the housing for storage.



The laser can be aligned by adjusting the hex screws located on the bottom and side of the housing. The bottom screw adjusts the vertical axis while the side screw adjusts the horizontal axis.

**HORIZONTAL  
ADJUSTMENT  
SCREW**

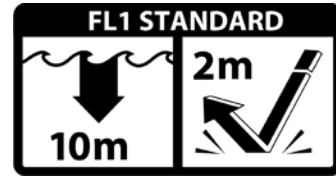


**VERTICAL  
ADJUSTMENT  
SCREW**



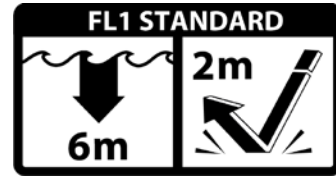
**PRODUCT DURABILITY, ENVIRONMENTAL CONSTRAINTS & CERTIFICATIONS:**

P/N 700-200 Only



CE

P/N 700-201, 700-202 & 700-203



CE

- Survives Temperature Extremes of 0°F (-18°C) to 300°F (149°C)

**CARE/CLEANING:**

Your FoxFury is a professional tool, but regular maintenance and care of your light will maximize its performance for you. As needed, wash your FoxFury using a soft washcloth, clean water and a mild soap. Be sure that battery pack is sealed before washing. When done, pat dry with a damp cloth. If your light has been exposed to mud, use a toothbrush under running water to clean.

**WARNINGS:**

**IMPORTANT**

FoxFury, LLC is not responsible for the incorrect use of any FoxFury Lighting product.

- Lights are strong enough to cause damage to the human eye.
- Do not stare into LEDs for long periods of time or from a close range (less than 2 feet).
- FoxFury, LLC is not responsible for any injury or damage caused during the use of this product.
- Usage of this product must be supervised by an adult when it is being used by a minor.
- Any FoxFury product should be operated at speeds safe enough to maneuver around surrounding obstacles.
- Do not use under the influence of drugs or alcohol.

**STROBE WARNING**

FoxFury's Turbo Strobe is purposely designed to induce disorientation. Prolonged viewing may produce vertigo or even vomiting. Note that the frequencies implemented are well below the ones reported to cause photo-induced seizures. As with all products, use common sense while operating.

## LASER WARNING

Do not stare into the laser when it is on as it may cause damage to the human eye.

## LIMITED WARRANTY

FoxFury Limited Warranty & Customer Care Information  
FoxFury, LLC ("FoxFury") warrants to the purchaser of this product ("Buyer") that for a period of two years following purchase, this product will be free from defects in material and workmanship and will function in substantial compliance with FoxFury's written specifications for this product as specified in the instruction manual or on FoxFury's website located at [www.foxfury.com](http://www.foxfury.com). Buyer's exclusive remedy shall, in any case, be limited, at FoxFury's election, to: A) repair or replacement of the defective product; or B) refund of the purchase price for this product. **THE FOREGOING WARRANTY IS THE ONLY WARRANTY MADE BY FOXFURY WITH RESPECT TO THIS PRODUCT. TO THE EXTENT ALLOWED BY APPLICABLE LAW, THERE ARE NO REPRESENTATIONS OR WARRANTIES OF ANY KIND BY THE FOXFURY, EXPRESS OR IMPLIED, WITH RESPECT TO THE CONDITION OR PERFORMANCE OF THIS PRODUCT, INCLUDING, BUT NOT LIMITED TO, MERCHANTABILITY OR FITNESS FOR A PARTICULAR PURPOSE.** This limited warranty shall not apply if this product is not stored, handled, installed or used in strict accordance with manufacturer's specifications and instruction manuals, or which has been subject to misuse, alteration, negligence or accident.

1. The damaged part or product must be returned to FoxFury PRIOR TO any repair or replacement. Shipping costs are the responsibility of the claimant.
2. You must obtain a return authorization (RMA) number from FoxFury prior to returning products. FoxFury is not responsible for any damage incurred while in transit.
3. Buyer will be required to show proof of purchase – No Exceptions.
4. Any modifications to light, cable or battery pack automatically voids all warranties on this product.

All warranty inquiries should be directed to FoxFury's Customer Service Department to handle all warranty/repair-related inquiries.

**TO THE EXTENT ALLOWED BY APPLICABLE LAW: (A) IN NO EVENT, WHETHER DUE TO BREACH OF WARRANTY HEREUNDER OR ANY OTHER CAUSE WHATSOEVER, SHALL FOXFURY BE LIABLE FOR OR OBLIGATED IN ANY MANNER TO PAY CONSEQUENTIAL, INCIDENTAL OR INDIRECT DAMAGES, INCLUDING, BUT NOT LIMITED TO, LOSS OF PROFITS, COST OF SUBSTITUTE PRODUCTS AND PERSONAL INJURY OR PROPERTY DAMAGE, WHETHER SUCH CLAIM IS BASED ON CONTRACT OR TORT OR ANY OTHER THEORY OF LAW, AND (B) FOXFURY'S ONLY DUTIES IN CONNECTION WITH THE SALE OF THIS PRODUCT SHALL BE TO HONOR THE LIMITED WARRANTY SET FORTH HEREIN. TO THE EXTENT THAT THIS LIMITED WARRANTY IS INCONSISTENT WITH APPLICABLE LAW, THIS STATEMENT SHALL BE DEEMED MODIFIED TO BE CONSISTENT WITH SUCH APPLICABLE LAW.**



FoxFury, LLC

Oceanside, CA 92084 USA

Toll-Free: 844-FOXFURY

Tel: 760.945.4231

Fax: 760.758.6283

Email: [custserv@foxfury.com](mailto:custserv@foxfury.com)

[www.FoxFury.com](http://www.FoxFury.com)

All FoxFury products are designed in Oceanside, CA. All FoxFury products are manufactured with the highest quality USA and foreign parts. Products are assembled in either FoxFury's controlled plant in Asia or the USA, under strict quality control.