

**Bambu
Lab**
X1E 3D Printer
ETL Certified

For professionals and
engineering applications

DigitMakers.ca
Providing Tools For Innovation



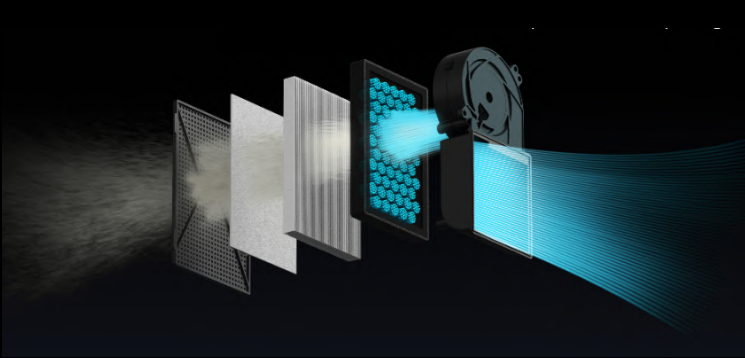
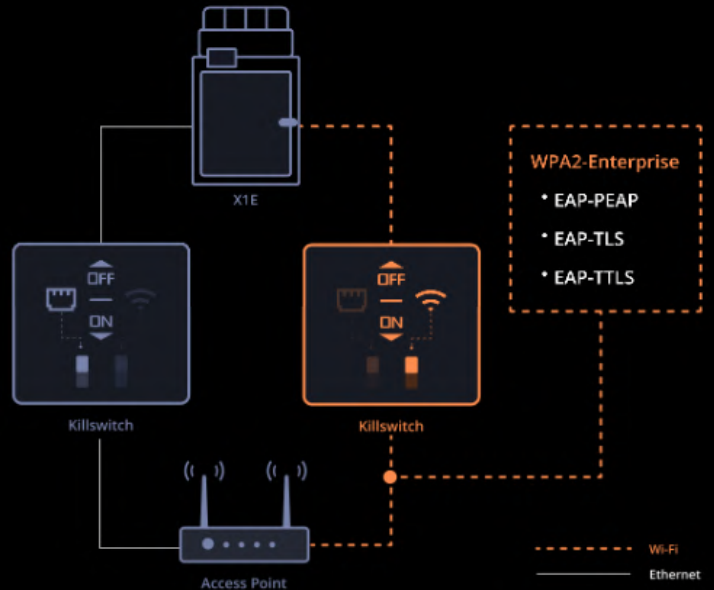
PRODUCT FEATURES

ENHANCED AND MORE CONNECTION OPTIONS

X1E offers the option to connect to your devices through its newly added Ethernet port, ensuring robust network communication in complex environments.

OFF-CLOUD OPERATION, FULLY FUNCTIONAL WITH LAN ONLY MODE

X1E can operate independently without a connection to Bambu Cloud Service, fully functional within your local network.

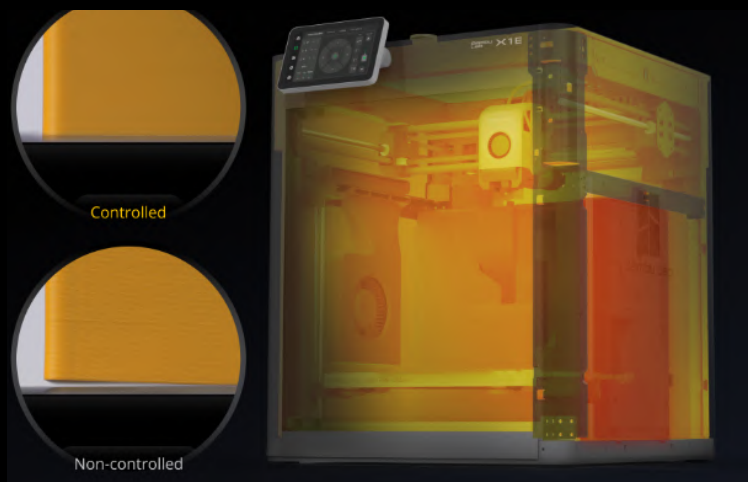


HEAVY DUTY AIR FILTRATION

Bambu Lab combined a G3 pre-filter, an H12 HEPA filter, and a high-quality coconut shell activated carbon filter to provide optimal air filtration.

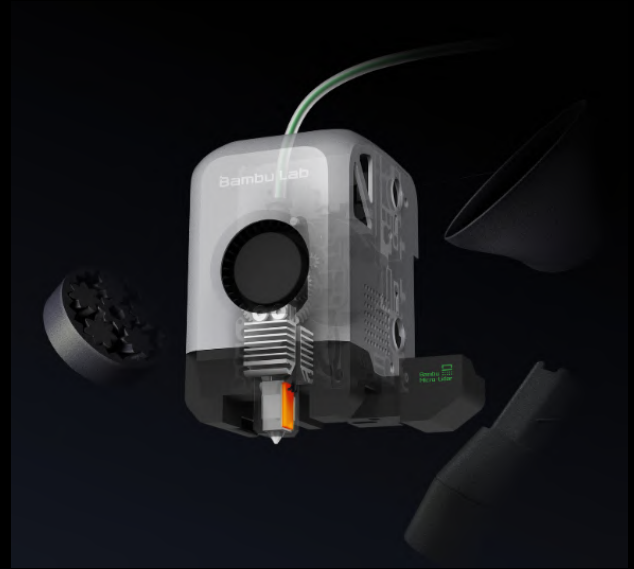
ACTIVE HEATING AND CONTROLLED CHAMBER TEMP

X1E can actively heat and regulate the chamber temperature. Accurately controlled chamber temperature (up to 60°C or 140°F) improves print quality, especially for filaments prone to warping such as ABS and PC.



320 °C (608 °F) NOZZLE TEMP

Higher nozzle temperature make possible to print higher performance materials such as PPA-CF/GF, PPS and PPS-CF.

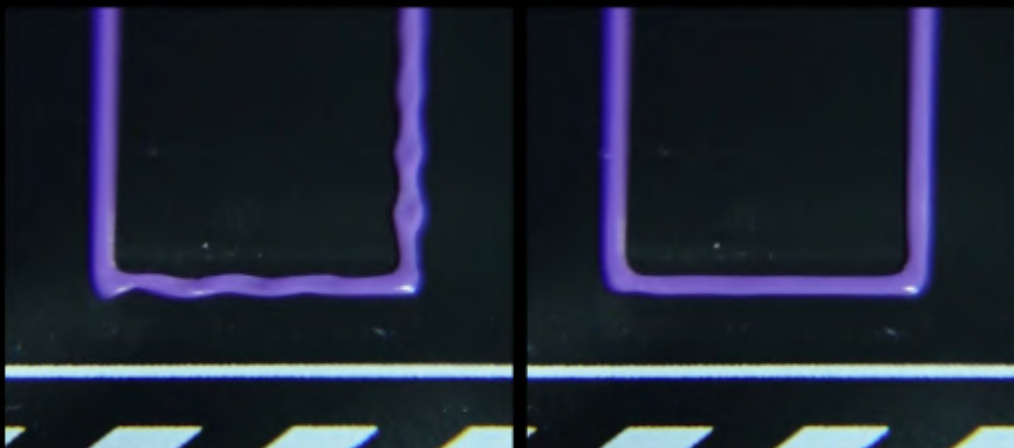


ROBUST HIGH SPEED CORE XY

The superior carbon-fiber rods in the CoreXY motion structure enable the X1E to achieve a toolhead acceleration of 20,000 mm/s² by reducing the weight of moving parts.

HEAVY DUTY AIR FILTRATION

Bambu Lab combined a G3 pre-filter, an H12 HEPA filter, and a high-quality coconut shell activated carbon filter to provide optimal air filtration.

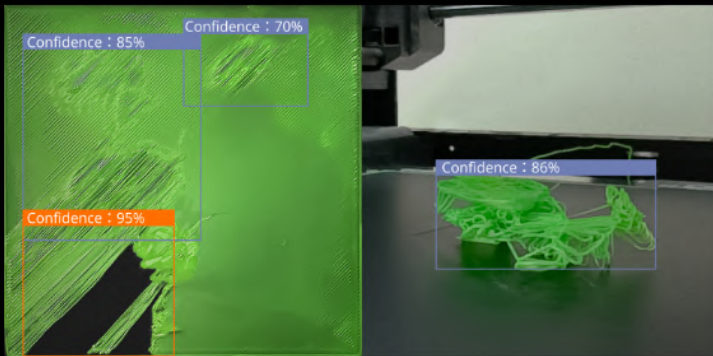


Active Vibration Compensation: OFF

Active Vibration Compensation: ON

VIBRATION AND EXTRUSION COMPENSATION

X1E can actively compensate for XY-axis vibrations and extrusion issues to ensure exceptionally smooth print quality.



AI FAILURE DETECTION

The X1E's AI algorithm can detect first-layer imperfections and spaghetti failures with the assistance of Lidar and computer vision. It then automatically pauses the print to prevent catastrophic failures.

INTELLIGENT FILAMENT MANAGEMENT

X1E can parallel connect 4 Bambu AMS systems to print with up to 16 spools of filaments, good for printing dedicated support materials for seamless surface and printing multi-color.





X1E

Wifi

Frequency Range: 2400 MHz – 2483.5 MHz

WPA2-Enterprise:

EAP-PEAP
EAP-TLS
EAP-TTLS

Ethernet

Socket: RJ45

Speed: 100 Mbps / Full Duplex

Supported Filaments

PLA, PETG, TPU, PVA, BVOH: Optimal
ABS, ASA, PC, PA, PET: Superior
Carbon/Glass Fiber Reinforced PLA, PETG,
PA, PET, PC, ABS, ASA: Superior
PPA-CF/GF, PPS, PPS-CF/GF: Ideal

Heating

Active Chamber Heating: Yes
Maximum Chamber Control
Temperature: 60°C



X1C

Wifi

Frequency Range: 2400 MHz – 2483.5 MHz

WPA2-Enterprise:

No

Ethernet

Socket: N/A

Speed: N/A

Supported Filaments

PLA, PETG, TPU, PVA, BVOH: Optimal
ABS, ASA, PC, PA, PET: Ideal
Carbon/Glass Fiber Reinforced PLA, PETG,
PA, PET, PC, ABS, ASA: Ideal
PPA-CF/GF, PPS, PPS-CF/GF: No

Heating

Active Chamber Heating: No
Maximum Chamber Control Temperature:
N/A

X1E

Air Purification

Pre-filter grade: **G3**
HEPA filter grade: **H12**
Activated Carbon Filter type: **Coconut Shell Granulated**
VOC Filtration: **Optimal**
Particulate Matter Filtration: **Yes**

Network Control

Ethernet: **Yes**
Wireless Network: Wi-Fi
Network Kill Switch: **Wi-Fi & Ethernet**
Removable Network Module: **Yes**
802.1X Network Access Control: **Yes**

Toolhead

Hot End: All-Metal
Nozzle: Hardened Steel
Max Hot End Temperature: **320°C**

Speed

Max Speed of Toolhead: 500 mm/s
Max Acceleration of Toolhead: 20000 mm/s²

Sensors

Bambu Micro Lidar: Yes
Chamber Monitoring Camera: 1920*1080 Included

Physical Dimensions

Dimensions: 389*389*457 mm³
Net Weight: 16 kg

X1C

Air Purification

Pre-filter grade: None
HEPA filter grade: None
Activated Carbon Filter type: Coal Based Pellets
VOC Filtration: Capable
Particulate Matter Filtration: No

Network Control

Ethernet: No
Wireless Network: Wi-Fi
Network Kill Switch: No
Removable Network Module: No
802.1X Network Access Control: No

Toolhead

Hot End: All-Metal
Nozzle: Hardened Steel
Max Hot End Temperature: 300°C

Speed

Max Speed of Toolhead: 500 mm/s
Max Acceleration of Toolhead: 20000 mm/s²

Sensors

Bambu Micro Lidar: Yes
Chamber Monitoring Camera: 1920*1080 Included

Physical Dimensions

Dimensions: 389*389*457 mm³
Net Weight: 14.13 kg

[DOWNLOAD X1E FULL TECHNICAL SPECIFICATION](#)



DigitMakers.ca



Our 3D Printers are
ETL Certified



We have an in-house expert
always available for support



We offer extended
warranty



We stock Bambu Lab spare
parts, accessories, and filaments