



COOLER
BY DESIGN

Blizzard Lighting, LLC

Phone: 1.866.493.6025

Fax: 1.866.870.0031

Email: info@blizzardlighting.com

Website: <http://www.blizzardlighting.com>

4*20 RGB LED Pixel Mapping Bar

Meet Pixellicious™ Mini, the 1/2 meter 4*20 RGB LED version of our popular Pixellicious™ pixel mapping LED bar. Each Pixellicious™ Mini fixture houses 80 tri-color SMD 5050 RGB LEDs with 25mm pixel pitch and has a 120-degree viewing angle.

Pixel mapping displays are achieved in minutes using multiple control options: DMX-512, industry standard Art-Net, Arkaos Kling-Net, or simply be controlled via its easy-to-use 4-button LCD control panel. It also works great with ArKaos LED Master for easy plug-n-play.

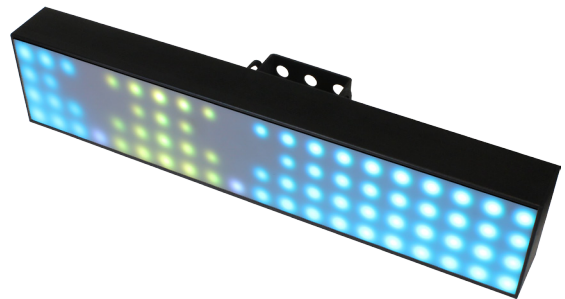
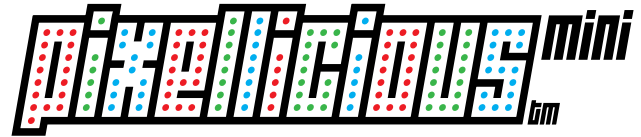
Depending on the look you want to achieve, you can mount them individually using its clamp mounting bracket with tilt and locking knobs, fasten multiple fixtures together end-to-end with their end connection brackets, and even connect up to 3 fixtures together to be vertically mounted from just one rigging point.

It also comes with a frosted and a clear replaceable lens filter, and is equipped with RJ45 Ethernet data connections, PowerCON™ compatible AC in/out, and DMX in/out jacks.

And of course, its backed by Blizzard's 2-year warranty!

Main Features

- Easy-to-use pixel mapping and video 1/2 meter bar
- 80* (tri-color) SMD 5050 LEDs, 50,000 hours
- Art-Net™ (3.0 compliant) or ArKaos Kling-Net
- Works great with ArKaos LED Master for easy plug-n-play
- Create vertical effects with hardware linking system
- Wide viewing angle and excellent color rendering
- 29 built-in programs, auto (mix) mode + sound active
- Link up to four in-lines with network cables or create vertical effects with hardware linking system
 - Easily manage configuration and software updates with the network-based remote web server
- High-performance fanless convection cooling
- Mounting bracket with dual locking knobs for positioning flexibility
 - RJ45 ethernet data connections
 - 3-pin male input and 3-pin female output
 - PowerCon™ compatible AC power In/Out connectors



Power

- Voltage: 90-240VAC, 50-60Hz
- Power Consumption: 51W, .36A

Optical

- 80 LEDs (tri-color) SMD 5050, 50,000 hours
- 120 degree beam angle

Thermal

- Max. Operating Temp.: 104 degrees F (40 degrees C) ambient

Control

- Protocol: Art-Net™, Kling-Net, USITT DMX-512
- DMX Channels: 8/20/240-Channels
- Artnet Channels: 240-Channels
- Input/Output: 3-pin XLR Male/Female
- Standalone, Master/Slave, Auto, Sound Active

Luminance

- Clear Filter: 2586 NITS, Frosted Filter: 2160 NITS

Weight & Dimensions

- 19.7" (500 mm) x 4.2" (107 mm) x 5" (127.3 mm)
- Weight: 4.6 lbs. (2.2 kg)

Warranty

- 2-year limited warranty, does not cover malfunction caused by damage to LEDs