

**mini**

**SYSTEM**



 **blizzard**

Blizzard Lighting, LLC  
<http://www.blizzardpro.com>  
Waukesha, WI USA  
Copyright (c) 2020

# TABLE OF CONTENTS

|   |           |
|---|-----------|
| <b>1. Getting Started</b>               | <b>3</b>  |
| What's In The Box?                      | 3         |
| Getting It Out Of the Box               | 3         |
| Powering Up!                            | 3         |
| Getting A Hold Of Us                    | 3         |
| Safety Instructions                     | 4         |
| General Requirements                    | 4         |
| Laser Safety Requirements               | 4         |
| <b>2. Meet the MiniSystem™</b>          | <b>5</b>  |
| Main Features                           | 5         |
| Dimensional Drawings                    | 5         |
| MiniSystem™ Pin-Up Picture              | 6         |
| The Control Panel                       | 6         |
| <b>3. Setup</b>                         | <b>7</b>  |
| Fuse Replacement                        | 7         |
| Mounting & Rigging                      | 7         |
| <b>4. Operating Instructions</b>        | <b>8</b>  |
| The Control Panel                       | 8         |
| Using the IR Remote Control             | 9         |
| <b>5. Appendix</b>                      | <b>10</b> |
| Keeping Your MiniSystem™ As Good As New | 10        |
| Returns (Gasp!)                         | 10        |
| Shipping Issues                         | 10        |
| Tech Specs!                             | 11        |



# 1. GETTING STARTED

## What's In The Box?

- 1 x MiniSystem™ Fixture
- 1 x IR Remote Control
- 1 x IEC Power Cord
- 1 x Mounting Bracket & Locking Knobs

## Getting It Out Of the Box

Congratulations on purchasing the 4-in-1 minisystem™ party light. Now that you've got minisystem™, you should carefully unpack the box and check the contents to ensure that all parts are present and in good condition. If anything looks as if it has been damaged in transit, notify the shipper immediately and keep the packing material for inspection. Again, please save the carton and all packing materials. If a fixture must be returned to the factory, it is important that the fixture be returned in the original factory box and packing.

## Powering Up!

All fixtures must be powered directly off a switched circuit and **cannot be run off a rheostat (variable resistor) or dimmer circuit, even if the rheostat or dimmer channel is used solely for a 0% to 100% switch.**

***Warning! All fixtures must be connected to circuits with a suitable Ground (Earthing).***

## Getting A Hold Of Us

**If something goes wrong, please visit [www.blizzardpro.com/support](http://www.blizzardpro.com/support) and open a support ticket. We'll be happy to help, honest.**

**Disclaimer:** The information and specifications contained in this document are subject to change without notice. Blizzard Lighting™ assumes no responsibility or liability for any errors or omissions that may appear in this user manual. Blizzard Lighting™ reserves the right to update the existing document or to create a new document to correct any errors or omissions at any time. You can download the latest version of this document from [www.blizzardpro.com](http://www.blizzardpro.com).

| Author:   | Date:     | Last Edited: | Date:      |
|-----------|-----------|--------------|------------|
| J. Thomas | 9/24/2020 | J. Thomas    | 12/28/2020 |

## Safety Instructions



Please read these instructions carefully. They include important information about the installation, usage and maintenance of this product.

## General Requirements

- Always make sure that you are connecting to the proper voltage.
- This product is intended for indoor use only.
- To prevent risk of fire or shock, do not expose fixture to rain or moisture.
- The unit must be installed in a location with adequate ventilation.
- Always disconnect from the power source before servicing or replacing fuse.
- Never try to repair the unit by yourself.
- Never connect the device to a dimmer pack.
- Make sure the power cord is never crimped or damaged.
- Never disconnect the power cord by pulling or tugging on it.

## Laser Safety Requirements

Lasers are one of the coolest effects available, and when they are used appropriately, they will be fun, legal and harmless. To make sure that is the case:

- Always set up and install all laser effects so that all laser light is at least 3 meters (9.8 feet) above the floor on which people can stand.
- After setting up, and before public use, test laser to ensure proper function. Do not use if any defect is detected. Do not use if laser emits only one or two laser beams rather than dozens/hundreds, as this could indicate damage to the diffraction grating optic, and could allow emission of higher laser levels above Class 3R.
- Never point lasers at people, or look into the laser aperture/beams.
- Never point a laser at aircraft, **this is a federal offense!**
- Never point un-terminated laser beams into the sky.
- Never expose the output optic (aperture) to cleaning chemicals.
- Never use laser if the laser appears to emit only one or two beams.
- Never use the laser if the housing is damaged, the housing is open, or if the optics appear damaged in any way.
- Never open the laser housing. The high laser power levels inside of the protective housing can start fires, burn skin and will cause instant eye injury.
- Never leave this device running unattended.

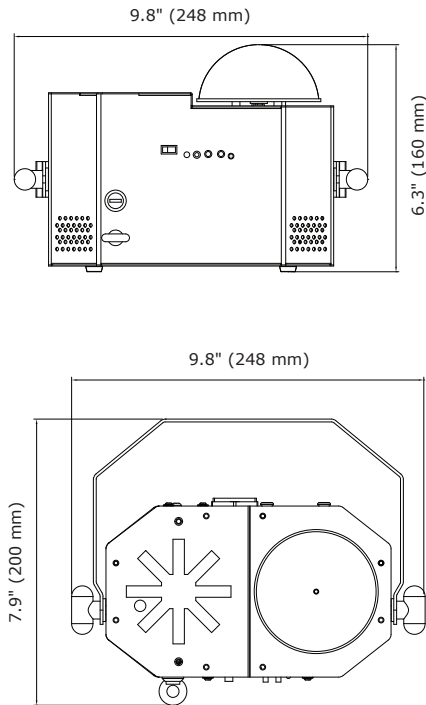
The operation of a class 3R laser show is only allowed if the show is controlled by a skilled and well-trained operator, familiar with the data from this manual. The legal requirements for using laser entertainment products vary from country to country. The user is responsible for the legal requirements at the location/ country of use.

## 2. MEET THE MINISYSTEM™

### Main Features

- Room filling R/G/B/W beams via rotating crystal half-sphere
- Wash, strobe, and chase RGB LED eye-candy effects
- Projects thousands of slow/fast moving red and green laser dots
- Laser safety key lock switch
- 2-button manual control (no DMX)
- Easy-to-use IR remote control
- Built-in microphone with sensitivity adjustments
- Multiple built-in auto and sound active show effects
- Energy efficient, low power consumption
- Lightweight and compact
- IEC power input
- Black metal housing with mounting bracket & locking knobs
- Operating modes: auto mode, sound active

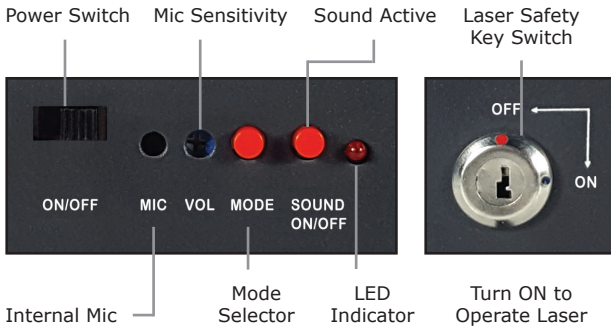
### Dimensional Drawings



## MiniSystem™ Pin-Up Picture



## The Control Panel



### 3. SETUP



Before replacing a fuse, disconnect the power cord.  
ALWAYS replace with the same type and rating of fuse.

#### Fuse Replacement

1. With a flat head screwdriver, remove the fuse holder from its housing.
2. Carefully remove the damaged fuse from the holder and replace with exact same type of fuse (2A, 250V).

#### Mounting & Rigging

This fixture may be mounted in any SAFE position provided there is enough room for ventilation. The fan or vent pathway must never be obstructed.

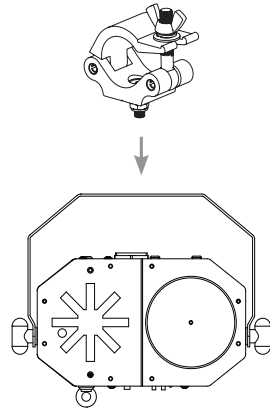
**IMPORTANT:** Regardless of the rigging option you choose for your fixtures, always be sure to secure your fixture with a safety cable.

Mount the fixture using a suitable "C" or "O" type clamp. The clamps should be rated to hold at least 10x the fixture's weight to ensure structural stability.

Do not mount to surfaces of unknown strength, and ensure properly rated rigging is used when mounting fixtures overhead.

Overhead mounting requires extensive experience, which includes calculating working load limits, knowledge of the installation material being used, and periodic safety inspections.

If you lack these qualifications, do not attempt the installation yourself. Improper installation can result in bodily injury.



# 4. OPERATING INSTRUCTIONS

## The Control Panel

All the features and different modes possible with the minisystem™ can be accessed by using the control panel buttons or IR remote control. The buttons allow you to control the unit, as detailed below.

Note: You must turn the laser safety key switch to "ON" to use the lasers.

|   |                             |   |
|---|-----------------------------|---|
| 1 | ON/OFF                      | Power switch  |
| 2 | MIC                         | Internal microphone   |
| 3 | VOL                         | Using a small phillips screwdriver, adjust clockwise for high mic sensitivity, or adjust counter-clockwise for low sensitivity. |
| 4 | MODE<br>(button)            | Show 0: LED, Laser, and Strobe shows (random 1-3)   |
|   |                             | Show 1: LED show  |
|   |                             | Show 2: Strobe show   |
|   |                             | Show 3: Laser show  |
| 5 | SOUND<br>ON/OFF<br>(button) | Switches between the following 3 options with each button press: Fast, Slow, and Sound Active.                                  |
|   |                             | Fast: Cycles through show modes 0-3, fast. The LED indicator flashes fast when active.  |
|   |                             | Slow: Cycles through show modes 0-3, slow. The LED indicator flashes slowly when active.  |
|   |                             | Sound Active: Cycles through show modes 0-3, controlled by sound. The LED indicator flashes with beat.                          |



## Using the IR Remote Control

All the goodies and different modes possible with the minisystem™ can be accessed by using the IR remote control.

The IR remote control is simple to use. It offers the same functionality of the LED control panel, with the addition of quick access shortcut buttons.

### <Standby>

Puts the fixture in standby mode. Press again to return to normal working mode.

### <Show 0>

This button shows all 3 built-in show programs in random order (Shows 1-3).

### <Show 1>

Press the "Show 1" button for the LED show.

### <Show 2>

Press the "Show 2" button for the Strobe show.

### <Show 3>

Press the "Show 3" button for the Laser show. Remember to make sure that the laser safety key switch is turned "ON".

### <Show Fast>

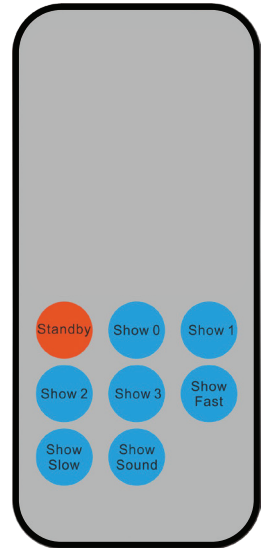
Cycles through all of the show modes 0-3, fast. While running, the LED indicator will flash fast.

### <Show Slow>

Cycles through all of the show modes 0-3, slow. While running, the LED indicator will flash slow.

### <Show Sound>

Cycles through all of the show modes 0-3, controlled by sound. The LED indicator will flash with beat.



# 5. APPENDIX

## Keeping Your MiniSystem™ As Good As New

The fixture you've received is a rugged, tough piece of pro lighting equipment, and as long as you take care of it, it will take care of you. That said, you'll need to take care of it if you want it to operate as designed. You should keep the fixture clean, especially if you are using it in an environment with a lot of dust, fog, haze, wild animals, wild teenagers or spilled drinks.

Cleaning the optics routinely with a suitable glass cleaner will greatly improve the quality of light output. Keeping the fans free of dust and debris will keep the fixture running cool and prevent damage from overheating.

In transit, keep the fixtures in cases. You wouldn't throw a prized guitar, drumset, or other piece of expensive gear into a gear trailer without a case, and similarly, you shouldn't even think about doing it with your shiny new light fixtures.

Common sense and taking care of your fixtures will be the single biggest thing you can do to keep them running at peak performance and let you worry about designing a great light show, putting on a great concert, or maximizing your client's satisfaction and "wow factor." That's what it's all about, after all!

## Returns (Gasp!)

We've taken a lot of precautions to make sure you never even have to worry about sending a defective unit back, or sending a unit in for service. But, like any complex piece of equipment designed and built by humans, once in a while, something doesn't go as planned. If you find yourself with a fixture that isn't behaving like a good little fixture should, you'll need to obtain a Return Authorization (RA).

Don't worry, this is easy. Just visit [www.blizzardpro.com/support](http://www.blizzardpro.com/support) and open a support ticket, and we'll issue you an RA. Then, you'll need to send the unit to us using a trackable, pre-paid freight method. We suggest using USPS Priority or UPS. Make sure you carefully pack the fixture for transit, and whenever possible, use the original box & packing for shipping.

When returning your fixture for service, be sure to include the following:

- 1.) Your contact information (Name, Address, Phone Number, Email address).
- 2.) The RA# issued to you
- 3.) A brief description of the problem/symptoms.

We will, at our discretion, repair or replace the fixture. Please remember that any shipping damage which occurs in transit to us is the customer's responsibility, so pack it well!

## Shipping Issues

**Damage incurred in shipping is the responsibility of the shipper, and must be reported to the carrier immediately upon receipt of the items. Claims must be made within seven (7) days of receipt.**

## Tech Specs!

| <b>Weight &amp; Dimensions</b> |   |
|--------------------------------|---|
| Width                          | 9.8 inches (248 mm)   |
| Depth                          | 6.3 inches (160 mm)   |
| Height                         | 7.9 inches (200 mm)   |
| Weight                         | 3.6 lbs. (1.6 kg)   |
| <b>Power</b>                   |   |
| Operating Voltage              | 100-240VAC, 50-60 Hz  |
| Power Consumption              | 25W   |
| Fuse                           | 2A, 250V (5x20mm)   |
| <b>Light Source</b>            |   |
| LED                            | 4* 3W LEDs (R1/G1/B1/W1)  |
|                                | 32* 3-in-1 RGB SMD5050 LEDs   |
| Lasers                         | Red: 100mW, 650nm   |
|                                | Green: 30mW, 520nm  |
| <b>Thermal</b>                 |   |
| Max. Operating Temp.           | 104 degrees F (40 degrees C) ambient  |
| <b>Control</b>                 |   |
| Method                         | Manual, IR Remote Control   |
| Operating Modes                | Auto, Sound Active  |
| <b>Warranty</b>                | 2-year limited warranty, does not cover malfunction caused by damage to LEDs. |



**Enjoy your product!  
Our sincerest thanks for your purchase!  
--The team @ Blizzard Lighting**