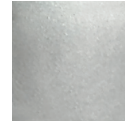




Standard Color



Silver

**Disassembles
Quickly & Easily!**

Literider Envy LT ^{GOLDEN} LiteRider[®] ENVY LT GP161

The all-new LiteRider Envy LT Power Wheelchair is both stylish and durable with a tubular design that is unique to the Golden LiteRider family! The Envy LT features a compact PG Drives Technology nVR2 controller and well-styled joystick designed to make everyday tasks easier such as driving up to a table or maneuvering through a doorway. The Envy LT has an impressive 28.5" turning radius, making it perfect for indoor or outdoor use, and offers an operating range of up to 7.25 miles on two 12V 18AH batteries. It also offers convenient offboard charging and easy disassembly for transport. The Envy LT offers excellent value and performance for your active lifestyle.

Standard Features:

- 250 lb. Weight Capacity
- PG Drives nVR2 Joystick with 40 Amp Controller
- Adjustable Footplate
- Silver Powder Coated Frame
- Offboard Charging Capability
- Quick & Easy Disassembly



Model Number	GP161
Medicare Code	Not Coded
Weight Capacity	250 lbs.
Drive Wheels	Rear
Maximum Speed	3.5 mph
Operating Range ¹	7.25 miles
Ground Clearance	2.5"
Turning Radius	28.5"
Type Batteries	2-18 AH
Colors	Silver
Freewheel Mode	Yes
Electronic Speed Control	Yes
Electro-Mechanical Brakes	Yes
Charger	Off Board
Controller	40 Amp Remote
Dimensions:	
Length	33.25"
Width	22.5"
Height (ground to top of back of seat)	34" - 35"
Ground to Top of Seat	21.5" - 22.5"
Number of Seat Height Positions	2
Size of Increments	1"
Weight of Unit: (assembled)	
Front Half	34.5 lbs.
Rear Half	30.5 lbs.
Seat w/Arms	23 lbs.
Batteries	25 lbs/pack (2-18AH)
Tires:	
Drive Wheels	8"
Casters	6"
Anti-Tip Wheels	2"
Standard Seat:	
Back Height - no headrest	16"
Width x Depth	17" x 16"
Color	Black Vinyl
Footrest:	
Yes	Yes
Height adjustable	Yes
Angle adjustable	Yes
Warranty:	
Frame	5 Years
Drive Train	13 Months
Electronics ²	13 Months
Batteries	12 Months



Perfect for transport!

¹ Battery range tested at 200 lbs. and will vary due to rider weight, drive surface, terrain and battery type.

² Electronics warranty excludes batteries.