

REDNECK

Hunting Blinds

Trailer Deer Stand Assembly Instructions

WARNING! Failure to read and strictly comply with the steps contained within these instructions may result in serious injury or death.

WARNING! The safe use and operation of this product is the sole responsibility of the user. It is also the sole responsibility of the owner to provide any person(s) who borrow or purchase this product with this instruction manual. Failure to follow these instructions may result in serious injury or death. Additionally, failure to follow these instructions may subject you to personal liability penalties as determined by the U.S. Judicial system.

WARNING! Do not remove, modify and/or omit any portion or otherwise mechanically modify this product(s) or its assemblies in any manner other than stated in these instructions. Improper modification, misuse and /or part substitution shall immediately void your factory warranty and may result in serious injury or death. If you suspect that a part(s) is missing and/or defective, immediately discontinue all use of the product and contact Redneck Manufacturing at 877-523-9986 for replacement of missing or defective parts. Always use genuine factory authorized replacement parts. Use of any replacement parts other than genuine parts voids your warranty and may result in serious injury or death.

WARNING! Never attempt to hunt from an unlevel stand. If you find that your stand is unlevel, canted, angled, unstable, or in any configuration other than level, immediately discontinue all use of this product. Use a minimum of four jacks at the corners of the trailer to level. (Jacks not included with this kit) Readjust your trailer's leveling jacks as necessary to make it level and stable. Lower leveling jacks before unhitching from the towing vehicle. Failure to follow these instructions may result in serious injury or death.

WARNING! Secure all contents of the blind before towing. After towing, open blind door slowly as the contents may have shifted during transport and may fall out of the blind.

WARNING! Never tow trailer with any person in or on the blind/trailer. Please follow all laws regarding safety restraints and motor vehicles. Failure to do so may cause serious injury or death.

WARNING! Remove ladder before towing blind. Failure to do so may cause damage to the ladder, stand, and/or trailer.

WARNING! Blind may be too tall to be towed beneath some structures. Take note of the height of your blind after assembly and be sure to avoid low over passes, power lines, tree limbs, etc.

WARNING! This stand is not intended for highway use.

WARNING! After towing inspect the blind to trailer connections for any cracks or defects in the trailer or stand feet. Discontinue all use of this product if the stand is not securely fastened to the trailer.

WARNING! Observe all local and federal laws and regulations regarding safe and legal hunting.

WARNING! Thoroughly inspect this or any other Redneck Manufacturing product(s) prior to each use for signs of wear, rot, corrosion, cracks, deterioration and/or any other type of defect. Immediately discontinue all use of this product or any other product(s) if they show evidence of wear, rot, corrosion, cracks, deterioration and/or any other type of defect. Failure to follow these instructions may result in serious injury or death.

Should you have any questions about the assembly, installation or use of this product, or any other Redneck Manufacturing product, please call one of our customer service representatives toll free at 877-523-9986.

STEP 1: Remove all parts from the packaging and familiarize yourself with all the parts and tools required. Find the bill of material on page 5 and verify that all parts and hardware are present.

Note: The typical hardware connection will use (1) 3/8" x 1-1/4" hex bolt, (2) flat washers, (1) lock washer, and (1) 3/8" hex nut. Refer to Figure 1.1 for assembly.

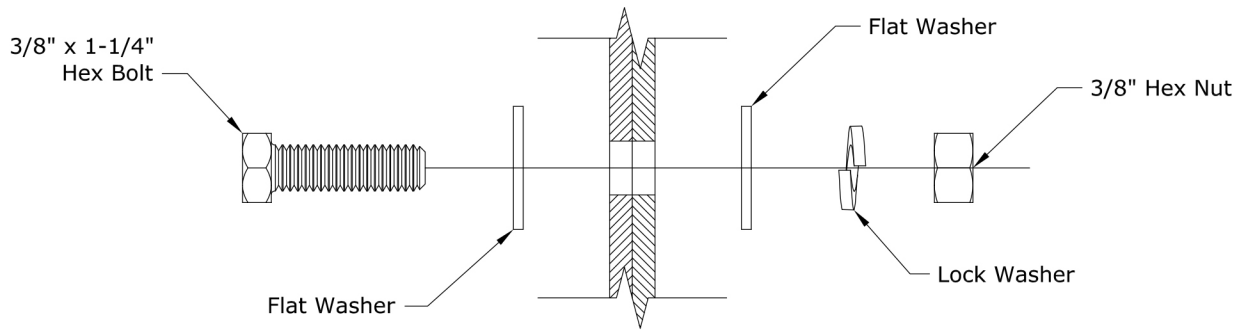


Figure 1.1

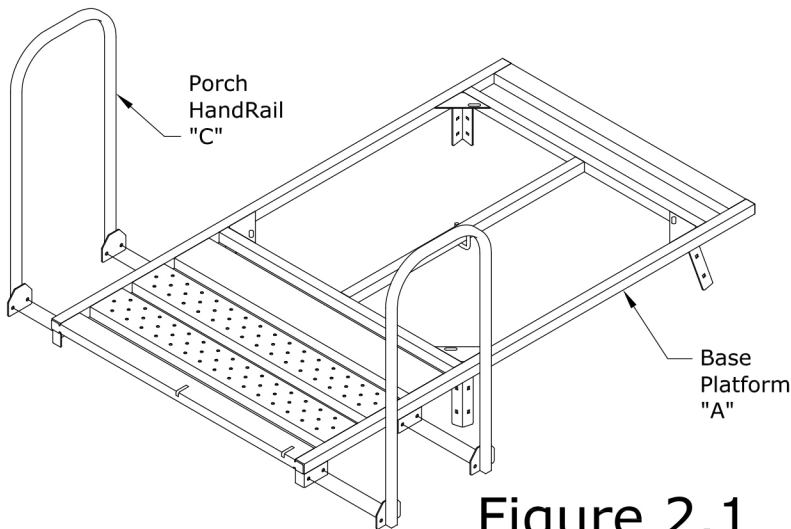


Figure 2.1

STEP 2: Locate the base platform "A". Install (2) Porch Hand Rails "C" onto the base platform as shown in Figure 2.1 using the typical hardware connection in (8) places.

STEP 3: Position your Redneck Hunting Blind on the Base Platform. Center the blind so that the door side is parallel with the porch. NOTE: Make sure the blind is not resting on the treaded portion of the front channel. Install the (4) 3/8" x 2" bolts, (4) 3/8" x 1-3/4" washers from inside the blind. Secure to the base platform with (4) 3/8" flat washers, (4) 3/8" lock washers, (4) 3/8" hex nuts as shown in Figure 3.1. DO NOT OVER TIGHTEN.

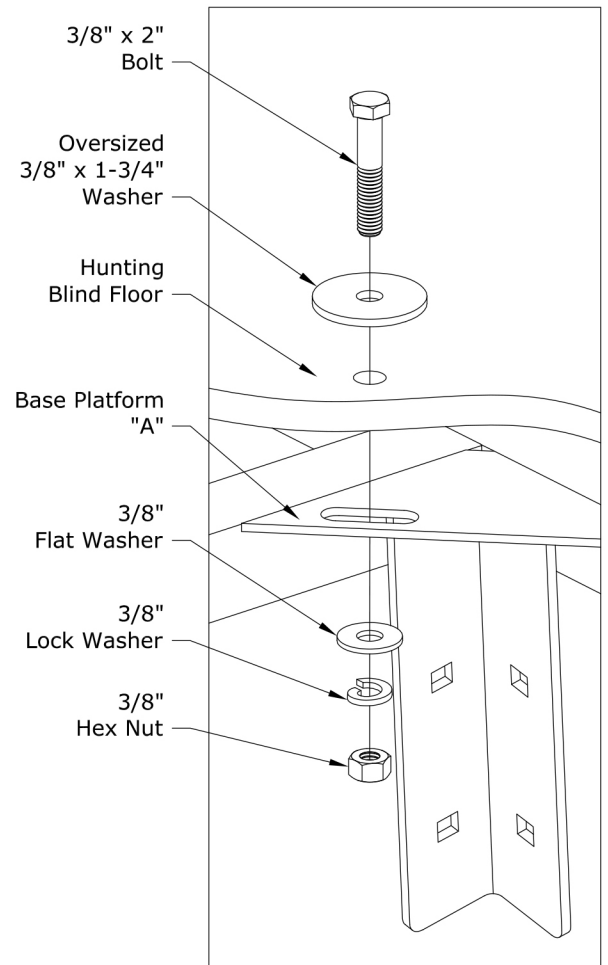


Figure 3.1

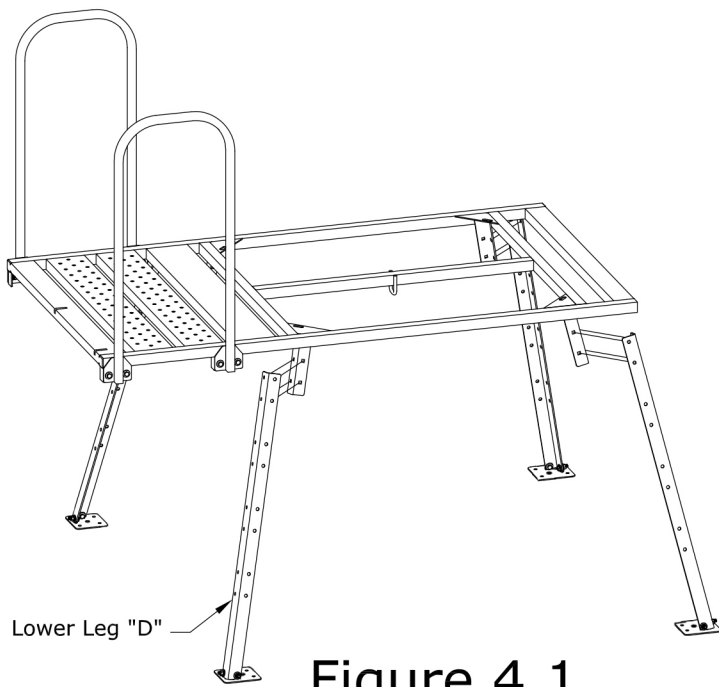


Figure 4.1

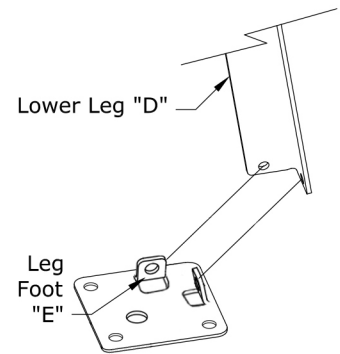


Figure 4.2

STEP 4: Locate (4) Leg sections "D" and (4) Leg Feet "E". Attach feet to legs as shown in Figure 4.2 with the typical hardware connection in (8) places. Install Leg sections to the platform using the typical hardware connection in (16) places as shown in Figure 4.1.

NOTE: Legs have extra sets of holes to allow stand height to be lowered. First determine the hole set that will set your stand at the desired height. Cut each leg approximately 3/4" above the upper hole of that set. Remove sharp edges caused by cutting. Paint to prevent rusting.

STEP 5: Assemble ladder parts B, F, G, and H using the typical hardware connection in (5) places. Use (2) 3/8" x 2" hex bolt, (4) flat washers, (2) lock washers, and (2) 3/8" hex nuts to attach the Ladder Hand Rail to the Ladder Section. Hand Rail can be attached to either side of the ladder. Refer to Figure 5.1 for proper assembly.

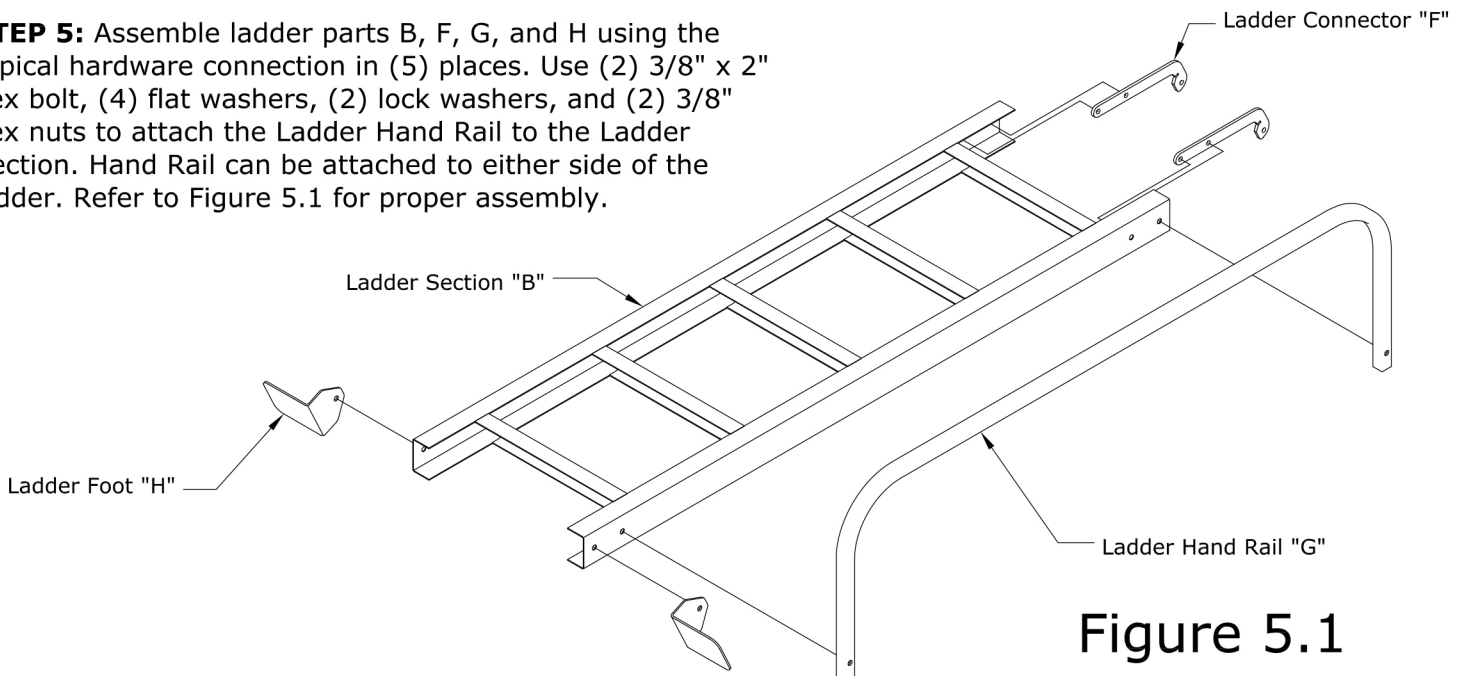


Figure 5.1

NOTE: This stand must be placed on a trailer that is a minimum of 5' wide by 5' long. The trailer must be equipped with a leveling jack at each of the four corners of the trailer. (jacks not included with kit)

STEP 6: Before placing the blind assembly on the trailer ensure the trailer is either hitched to a vehicle or the wheels are chocked to prevent it from moving. Lower the leveling jacks until each jack is firmly on the ground and the trailer is level.

READ THESE INSTRUCTIONS IN ENTIRETY PRIOR TO ASSEMBLING THIS PRODUCT

STEP 7: Position the platform on the trailer as shown in Figure 7.1. Drill eight (8) 7/16 holes in the trailer through the holes in the stand feet as shown in Figure 7.2. Secure using (8) 3/8" x 2" bolts, (16) 3/8" flat washers, (8) 3/8" lock washers, (8) 3/8" hex nuts.

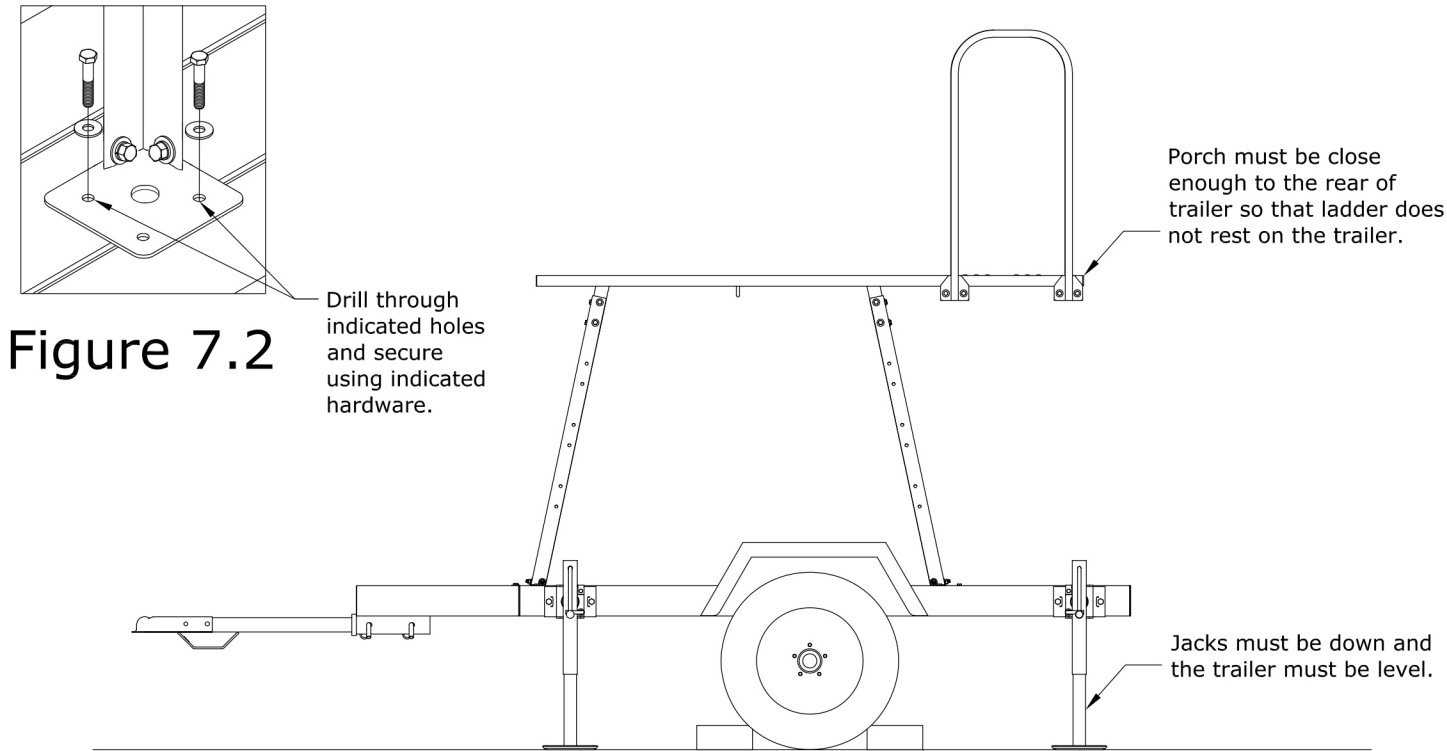


Figure 7.1

STEP 8: Raise the ladder into position on the front of the platform. Move ladder so that notches in Ladder Connector rest firmly in the slots on the platform as shown in Figure 8.1. The Ladder Connector will sit flush with the surface of the platform.

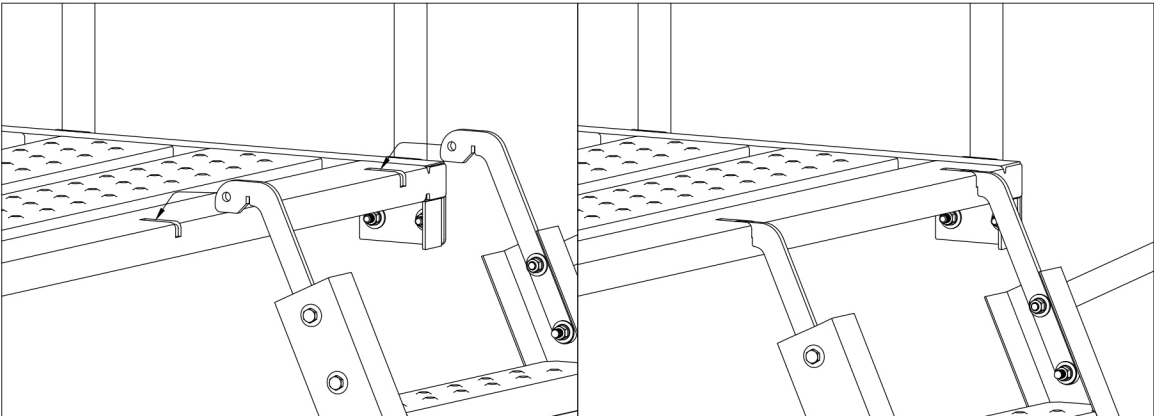


Figure 8.1

STEP 9: Install (2) Snapper Pins into Ladder Connectors as shown in Figure 9.1 and secure pins.

STEP 10: Verify that all bolts are tight and securely installed.

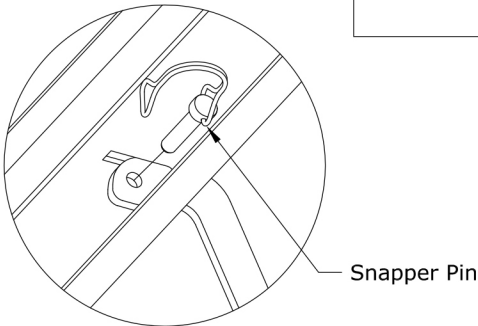


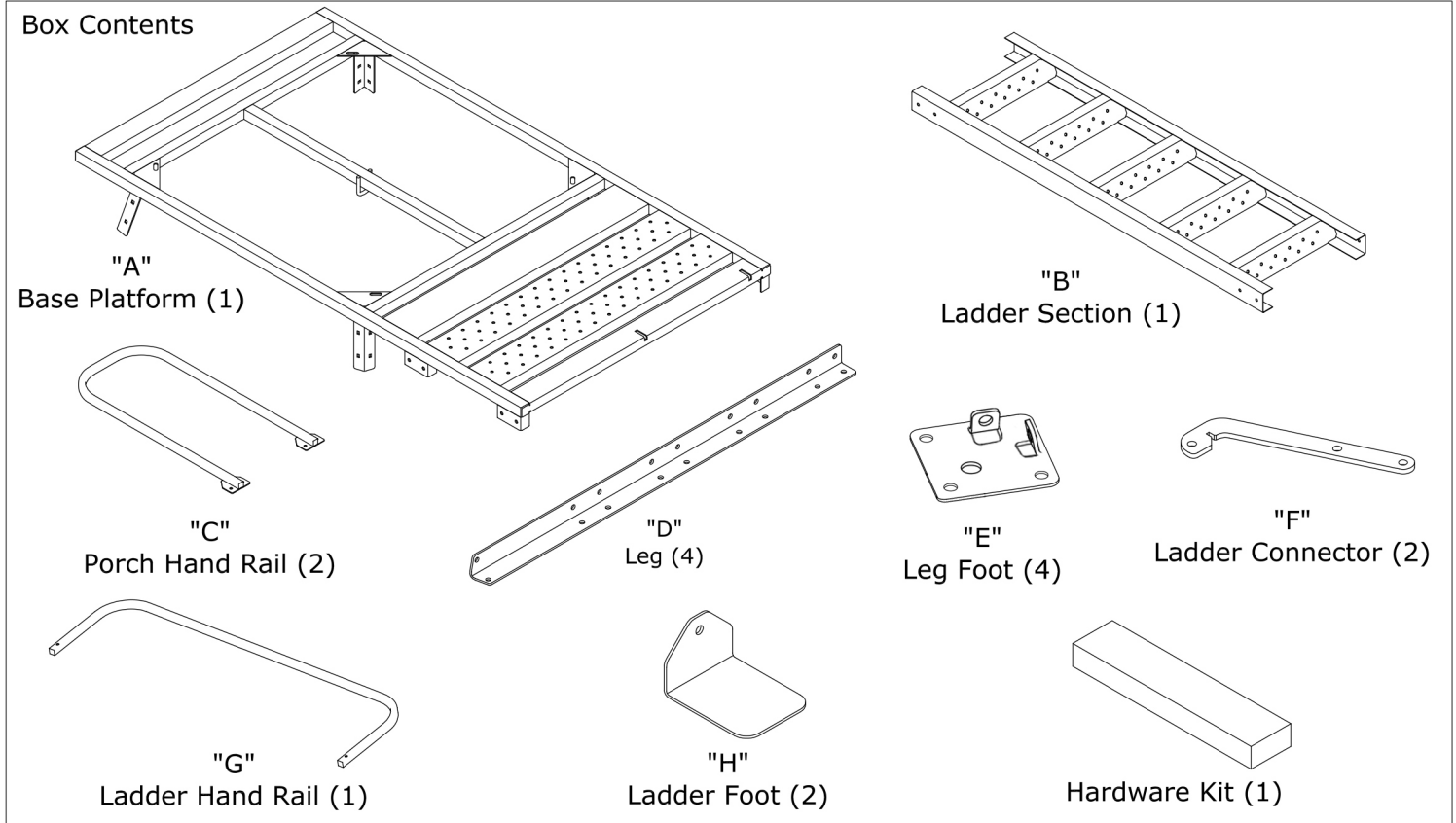
Figure 9.1

The assembly of the trailer stand is now complete.

READ THESE INSTRUCTIONS IN ENTIRETY PRIOR TO ASSEMBLING THIS PRODUCT

Trailer Stand

Part Summary



Deer Stand Bill of Materials

Part	Quantity	Description	Size/Length
A	1	Base Platform	77" x 43"
B	1	Ladder Section	63" x 18-3/8"
C	2	Porch Hand Rail	36" x 20"
D	4	Leg	42-7/16"
E	4	*Leg Foot	5-1/4" x 5-1/4"
F	2	*Ladder Connector	10" x 2-5/8"
G	1	Ladder Hand Rail	62" x 17"
H	2	*Ladder Foot	5" x 4" x 3-1/4"
I	40	* 3/8" x 1-1/4" Hex Bolt	
J	14	* 3/8" x 2" Hex Bolt	
K	54	* 3/8" Hex Nut	
L	101	* 3/8" Flat Washer	
M	54	* 3/8" Lock Washer	
N	4	*3/8" x 1-3/4" Washer	
O	2	* Snapper Pin	

* - Parts are located in the Hardware Kit box

Tools Required for Assembly

9/16" Ratchet & Socket
9/16" Wrench
Step Ladder
Level
Tape Measure
Wheel Chocks
Drill
7/16" Drill Bit

READ THESE INSTRUCTIONS IN ENTIRETY PRIOR TO ASSEMBLING THIS PRODUCT